

APPENDIX 33

PRELIMINARY ARCHITECTURAL GUIDELINE

ARCHITECTURAL DESIGN GUIDELINES FOR THE CAPE WINELANDS AIRPORT DEVELOPMENT.

Introduction:

In the pursuit of creating an exceptional and harmonious airport complex, this document outlines comprehensive architectural design guidelines. Envisioned to encompass various facilities catering to a diverse range of needs, from terminal buildings and commercial spaces including hotels and retail establishments, to passenger services like car hire facilities, this development strives for excellence in every aspect.

The airport complex is not only set to serve as a functional hub for travellers but also to establish a vibrant community centre. With a focus on holistic planning, the complex will boast a large public plaza and well-landscaped areas, fostering an environment where aesthetics and functionality intertwine seamlessly. Moreover, recognizing the diverse requirements of modern aviation, this complex will incorporate vital elements such as general aviation facilities, aircraft storage and maintenance hangars, and the full spectrum of support buildings necessary for accommodating aircraft as substantial as the A380.

An integrated approach extends to logistics and commerce, as warehousing and logistics facilities coexist alongside commercial office buildings. The holistic vision of this airport development aligns modernity with sustainability, embraces the local identity, and strives to be a pinnacle of architectural and functional achievement.

Design Principles:

1. **Modern Aesthetics:** All structures within the complex should embody a contemporary design language that harmonizes innovation with timeless allure.
2. **Engaging Public Areas:** Spaces that interface with the public, like walkways and plazas, should embrace "active boundaries," cultivating interactive and inviting environments.
3. **Innovative Roofscape:** Recognize rooftops as an integral fifth facet, offering a canvas to infuse creativity into the design, generating an extraordinary visual impact.
4. **Functional Colonnades:** For structures facing the public, incorporate colonnades to provide shelter from the elements. Extending roof eaves can further heighten weather protection, drawing inspiration from successful past examples.
5. **Abundant Landscaping:** Seamlessly intertwine landscaping with the areas encircling buildings, weaving in greenery, pathways, and water features to enhance both visual charm and user **experience**.
6. **Local Material Palette:** Incorporate finishes and materials that pay homage to the local context. Integrate elements like timber and stone cladding to establish a robust link with the region's distinctive identity.
7. **Elevating Traditional Elements:** Employ inventive design solutions to elevate the visual and utilitarian facets of buildings that employ conventional industrial construction methods.
8. **Harmonious Signage:** Adhere to the complex's signage guidelines for any building signs, including tenant logos, ensuring uniformity and visual cohesion throughout the compound.
9. **Enhanced Road Infrastructure and Landscaping for a People-Centric Environment:**
 - 9.1 Pedestrian Walkways and Pathways: Craft pedestrian pathways that are secure, well-illuminated, and seamlessly interconnected throughout the complex.
 - 9.2 Bicycle Facilities: Integrate designated bicycle lanes and parking zones to encourage sustainable transportation alternatives for travellers and staff.
 - 9.3 Landscape-Enhanced Corridors: Ensure roadways are meticulously landscaped with verdant elements and visual motifs that heighten aesthetics, fostering a delightful ambiance.

10. Sustainable Inclusions:

- **10.1 Eco-Friendly Design:** Incorporate sustainable design practices, including energy-efficient systems, renewable materials, and optimal use of natural light and ventilation.
- **10.2 Water Management:** Implement water-saving technologies, such as rainwater harvesting and efficient irrigation systems, to minimize water consumption and promote responsible water use.
- **10.3 Energy Efficiency:** Integrate energy-efficient lighting, HVAC systems, and appliances throughout the complex to reduce energy consumption and lower the environmental impact.
- **10.4 Green Building Certification:** Strive for recognized green building certifications to ensure the complex meets rigorous sustainability standards and contributes positively to the environment.
- **10.5 Waste Reduction:** Implement waste reduction and recycling programs to minimize the **generation of waste and encourage responsible disposal practices.**

11. Architectural Precedents (Annexure A): A collection of carefully curated architectural precedents will serve as invaluable sources of inspiration and guidance throughout the design process, aiding in creating a unique and forward-looking airport complex that integrates seamlessly with the surrounding environment.

12. Height Guidelines (Annexure B): Refer to Annexure B for detailed height guidelines that provide clarity on the permissible building heights within the airport complex, ensuring visual harmony and effective space utilization.

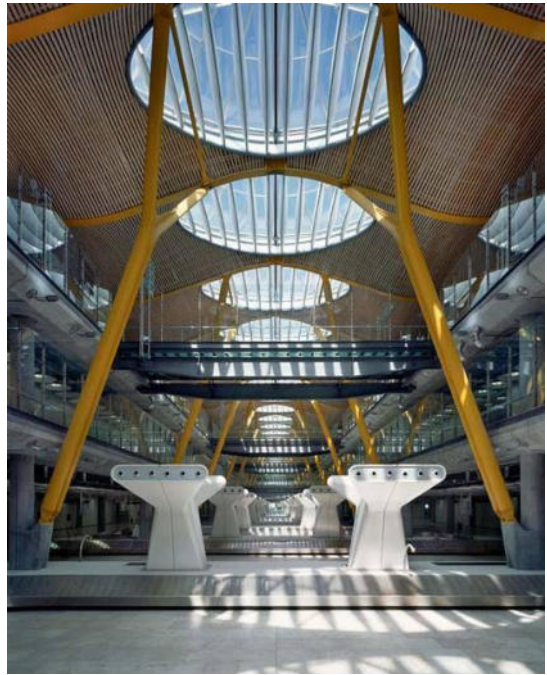
Conclusion: These comprehensive architectural directives operate as a navigational chart for shaping a contemporary airport complex that reconciles inventive design, pragmatic functionality, sustainable practices, and local integration. By embracing these guiding principles, the airport's development can forge a united and captivating setting that caters to travellers, visitors, and the local community while exalting the very essence of the region's identity.

Architects report/design guidelines Cape Winelands Airport Masterplan : Annexure A

- Examples of buildings with large roof overhangs/structural expression/double height curtain wall and public colonnade.



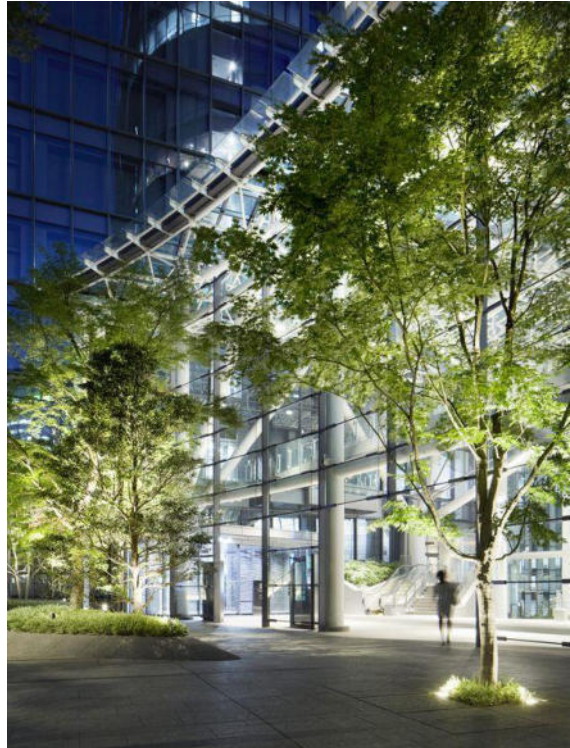
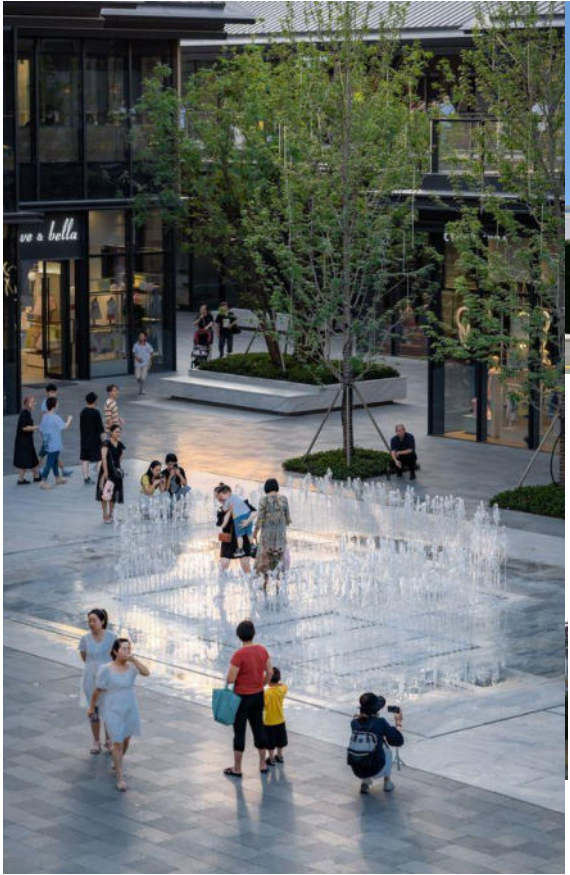
- Examples of buildings with large roof overhangs/structural expression/double height curtain wall and public colonnade.



- Examples of commercial hotel low rise buildings and public space



- Examples of public space design elements/ scale and landscaping



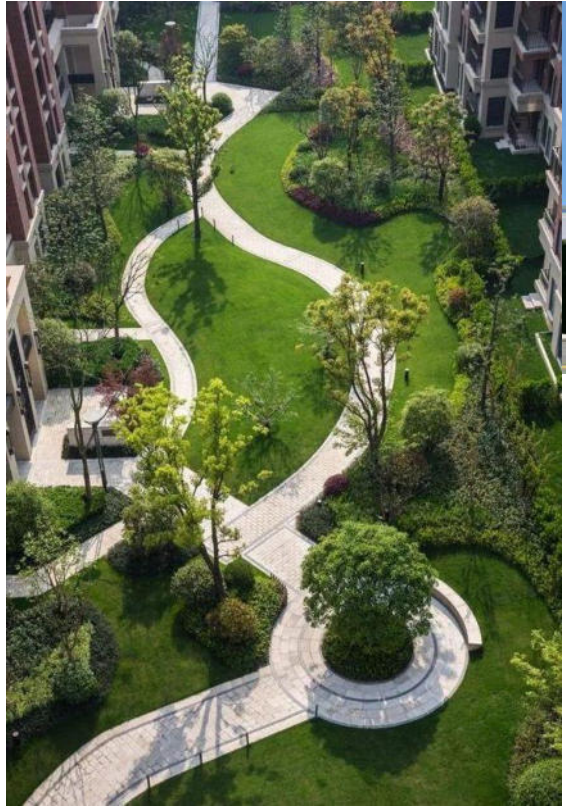
Examples of public space with active edges using extensive glazing.



- Examples of landscaping design elements to create interest and public space for people to use and enjoy



- Examples of landscaping design elements to create interest and public space for people to use and enjoy



- Examples of landscaping design elements to create interest and public space for people to use and enjoy



- Examples of industrial type buildings that use clever design elevate the facades to more than a utilitarian solution. They have visual appeal and interest

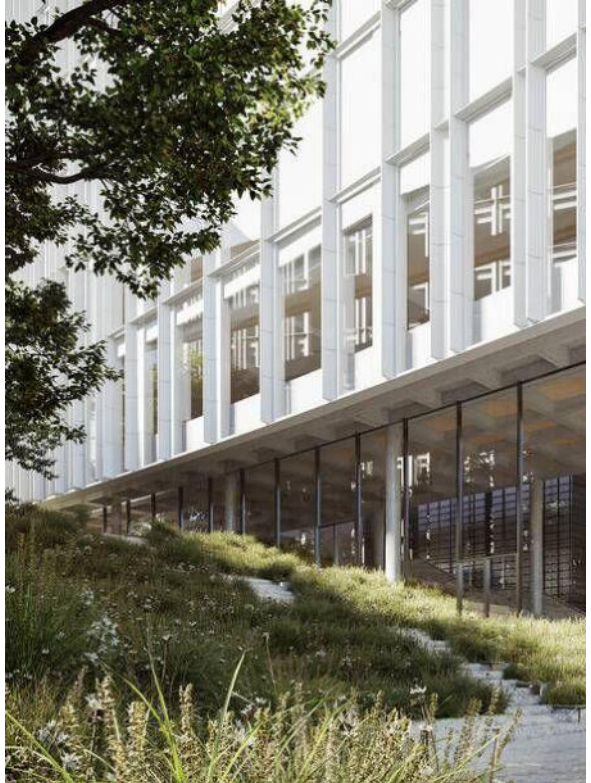
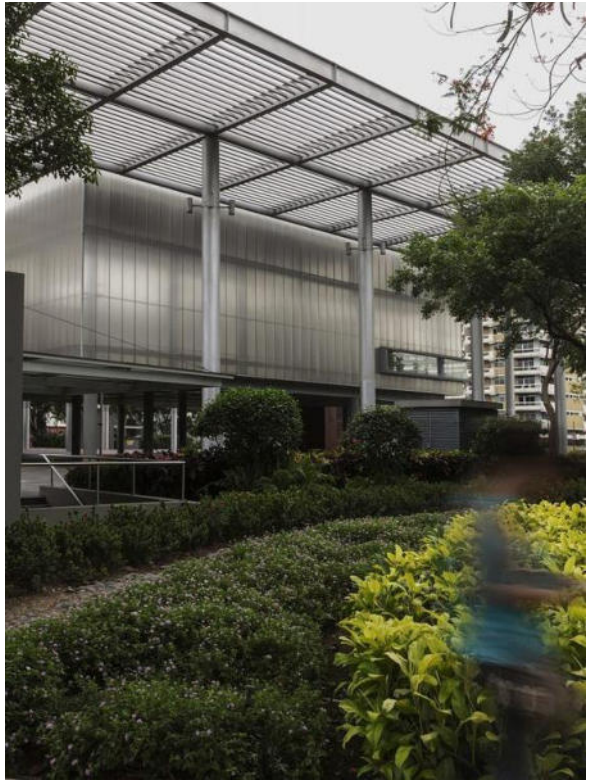
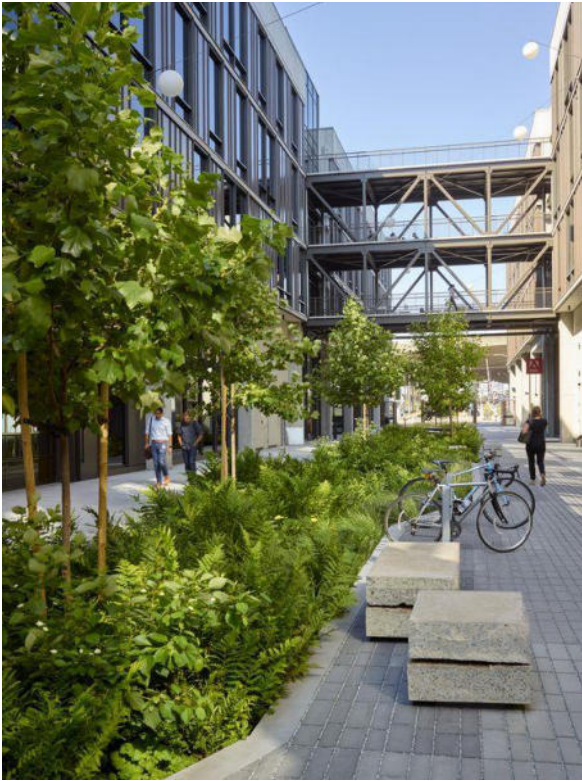


PRECEDENT

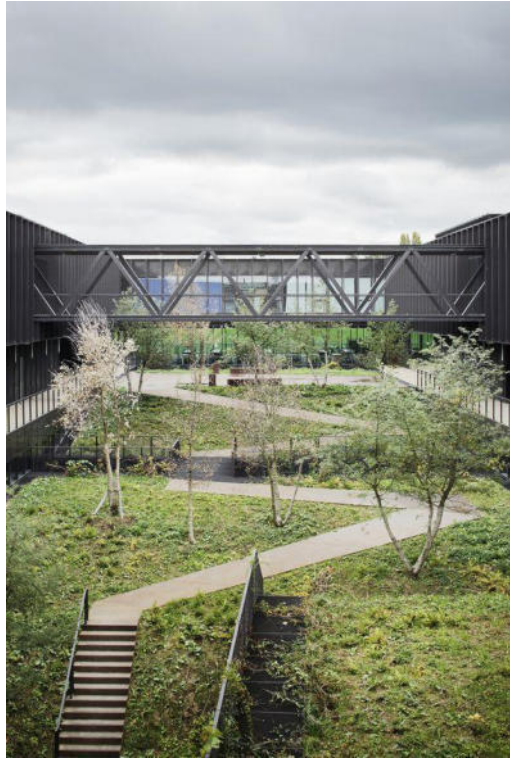
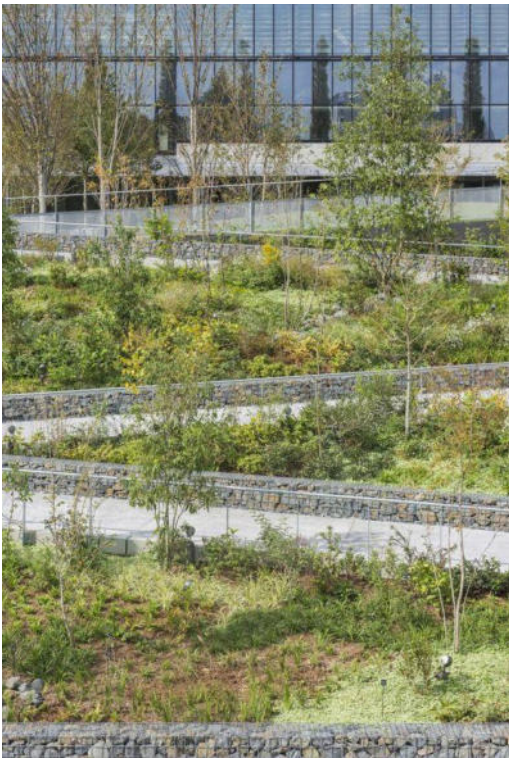
- Examples of buildings with interesting roof profiles and clever use of industrial type materials



- Examples of landscaping between buildings to create a user friendly pedestrian interface



- Examples of landscaping around buildings to create a user friendly pedestrian interface



- Artist impressions of the terminal building reflecting its 3 storey height and transparent glass facades



- Artist impressions of the terminal building reflecting the possibility of a dynamic roof profile

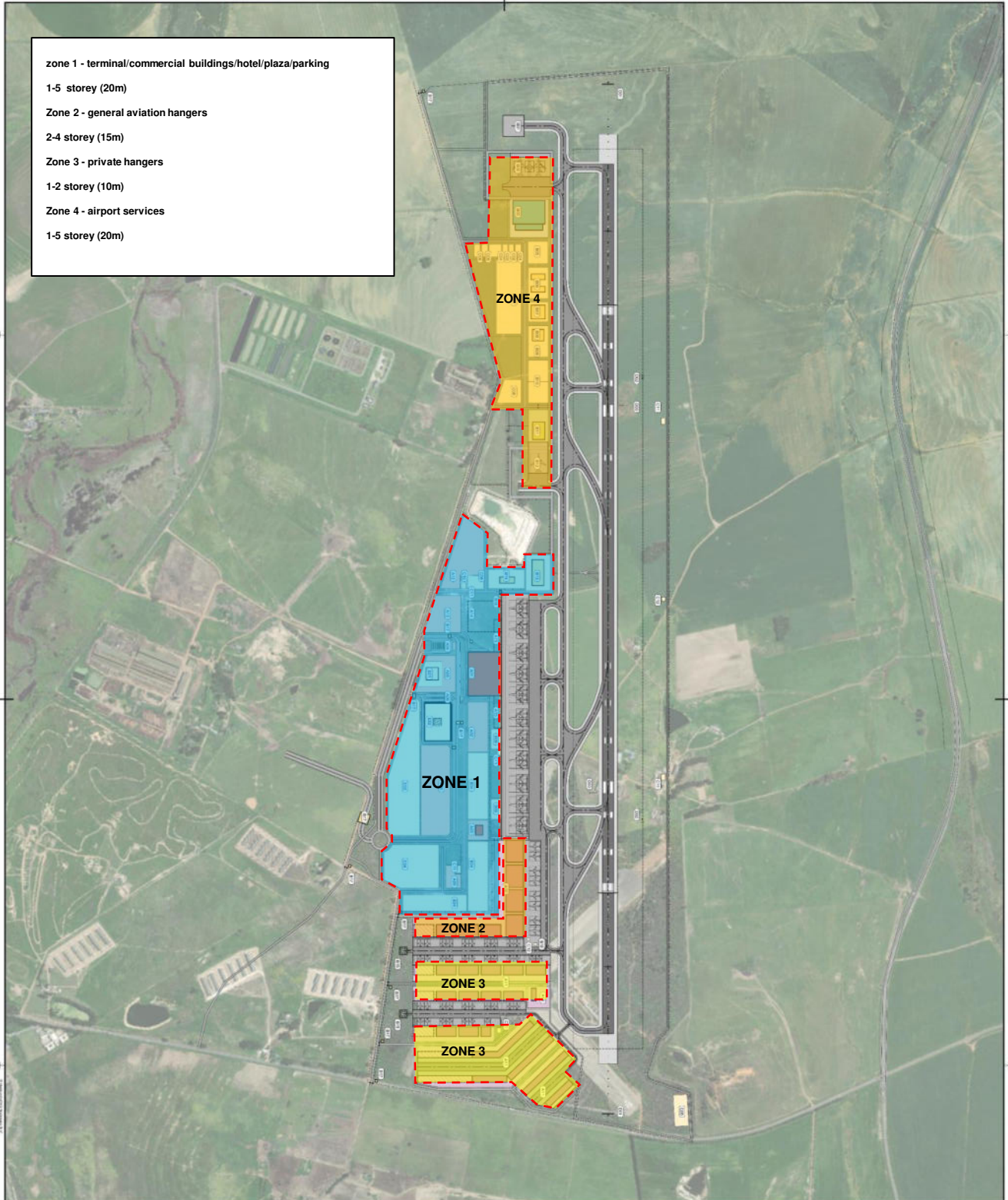


- Artist impressions of the commercial warehousing and hanger architecture that will be 1-3 storeys in height



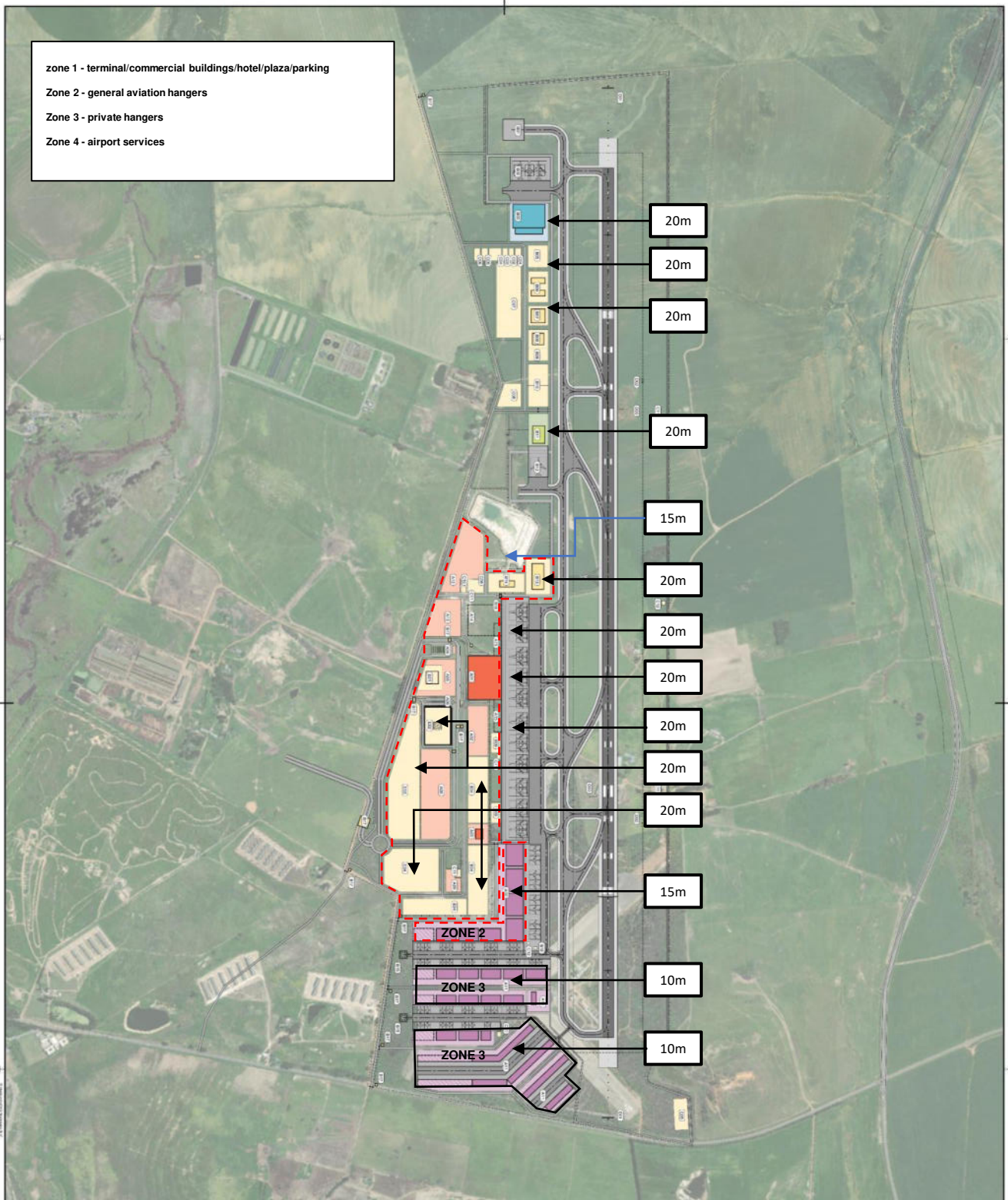
Architects report/design guidelines Cape Winelands Airport Masterplan : Annexure B

- zone 1 - terminal/commercial buildings/hotel/plaza/parking
1-5 storey (20m)
- Zone 2 - general aviation hangers
2-4 storey (15m)
- Zone 3 - private hangers
1-2 storey (10m)
- Zone 4 - airport services
1-5 storey (20m)



<p>LEGEND</p> <ul style="list-style-type: none"> Terminal gate + building Building General aviation part + building Cargo part + building MRO part + building Commercial part + building Airport terminal building Airside service level 2nd gate Security fence and gate 	
<p>Scale</p> <p>0 250 500 Meters</p>	
<p>PROJECT INFORMATION</p> <p>PROJECT: CWA Master Plan</p> <p>CLIENT: CAPE WINELANDS AIRPORT LTD</p> <p>DATE: 11-07-2023</p> <p>REVISION: 01</p> <p>APPROVED: [Signature]</p>	
<p>CONSULTANT</p> <p>vivid architects</p> <p>111, 113, 115, 117, 119, 121, 123, 125, 127, 129, 131, 133, 135, 137, 139, 141, 143, 145, 147, 149, 151, 153, 155, 157, 159, 161, 163, 165, 167, 169, 171, 173, 175, 177, 179, 181, 183, 185, 187, 189, 191, 193, 195, 197, 199, 201, 203, 205, 207, 209, 211, 213, 215, 217, 219, 221, 223, 225, 227, 229, 231, 233, 235, 237, 239, 241, 243, 245, 247, 249, 251, 253, 255, 257, 259, 261, 263, 265, 267, 269, 271, 273, 275, 277, 279, 281, 283, 285, 287, 289, 291, 293, 295, 297, 299, 301, 303, 305, 307, 309, 311, 313, 315, 317, 319, 321, 323, 325, 327, 329, 331, 333, 335, 337, 339, 341, 343, 345, 347, 349, 351, 353, 355, 357, 359, 361, 363, 365, 367, 369, 371, 373, 375, 377, 379, 381, 383, 385, 387, 389, 391, 393, 395, 397, 399, 401, 403, 405, 407, 409, 411, 413, 415, 417, 419, 421, 423, 425, 427, 429, 431, 433, 435, 437, 439, 441, 443, 445, 447, 449, 451, 453, 455, 457, 459, 461, 463, 465, 467, 469, 471, 473, 475, 477, 479, 481, 483, 485, 487, 489, 491, 493, 495, 497, 499, 501, 503, 505, 507, 509, 511, 513, 515, 517, 519, 521, 523, 525, 527, 529, 531, 533, 535, 537, 539, 541, 543, 545, 547, 549, 551, 553, 555, 557, 559, 561, 563, 565, 567, 569, 571, 573, 575, 577, 579, 581, 583, 585, 587, 589, 591, 593, 595, 597, 599, 601, 603, 605, 607, 609, 611, 613, 615, 617, 619, 621, 623, 625, 627, 629, 631, 633, 635, 637, 639, 641, 643, 645, 647, 649, 651, 653, 655, 657, 659, 661, 663, 665, 667, 669, 671, 673, 675, 677, 679, 681, 683, 685, 687, 689, 691, 693, 695, 697, 699, 701, 703, 705, 707, 709, 711, 713, 715, 717, 719, 721, 723, 725, 727, 729, 731, 733, 735, 737, 739, 741, 743, 745, 747, 749, 751, 753, 755, 757, 759, 761, 763, 765, 767, 769, 771, 773, 775, 777, 779, 781, 783, 785, 787, 789, 791, 793, 795, 797, 799, 801, 803, 805, 807, 809, 811, 813, 815, 817, 819, 821, 823, 825, 827, 829, 831, 833, 835, 837, 839, 841, 843, 845, 847, 849, 851, 853, 855, 857, 859, 861, 863, 865, 867, 869, 871, 873, 875, 877, 879, 881, 883, 885, 887, 889, 891, 893, 895, 897, 899, 901, 903, 905, 907, 909, 911, 913, 915, 917, 919, 921, 923, 925, 927, 929, 931, 933, 935, 937, 939, 941, 943, 945, 947, 949, 951, 953, 955, 957, 959, 961, 963, 965, 967, 969, 971, 973, 975, 977, 979, 981, 983, 985, 987, 989, 991, 993, 995, 997, 999, 1001, 1003, 1005, 1007, 1009, 1011, 1013, 1015, 1017, 1019, 1021, 1023, 1025, 1027, 1029, 1031, 1033, 1035, 1037, 1039, 1041, 1043, 1045, 1047, 1049, 1051, 1053, 1055, 1057, 1059, 1061, 1063, 1065, 1067, 1069, 1071, 1073, 1075, 1077, 1079, 1081, 1083, 1085, 1087, 1089, 1091, 1093, 1095, 1097, 1099, 1101, 1103, 1105, 1107, 1109, 1111, 1113, 1115, 1117, 1119, 1121, 1123, 1125, 1127, 1129, 1131, 1133, 1135, 1137, 1139, 1141, 1143, 1145, 1147, 1149, 1151, 1153, 1155, 1157, 1159, 1161, 1163, 1165, 1167, 1169, 1171, 1173, 1175, 1177, 1179, 1181, 1183, 1185, 1187, 1189, 1191, 1193, 1195, 1197, 1199, 1201, 1203, 1205, 1207, 1209, 1211, 1213, 1215, 1217, 1219, 1221, 1223, 1225, 1227, 1229, 1231, 1233, 1235, 1237, 1239, 1241, 1243, 1245, 1247, 1249, 1251, 1253, 1255, 1257, 1259, 1261, 1263, 1265, 1267, 1269, 1271, 1273, 1275, 1277, 1279, 1281, 1283, 1285, 1287, 1289, 1291, 1293, 1295, 1297, 1299, 1301, 1303, 1305, 1307, 1309, 1311, 1313, 1315, 1317, 1319, 1321, 1323, 1325, 1327, 1329, 1331, 1333, 1335, 1337, 1339, 1341, 1343, 1345, 1347, 1349, 1351, 1353, 1355, 1357, 1359, 1361, 1363, 1365, 1367, 1369, 1371, 1373, 1375, 1377, 1379, 1381, 1383, 1385, 1387, 1389, 1391, 1393, 1395, 1397, 1399, 1401, 1403, 1405, 1407, 1409, 1411, 1413, 1415, 1417, 1419, 1421, 1423, 1425, 1427, 1429, 1431, 1433, 1435, 1437, 1439, 1441, 1443, 1445, 1447, 1449, 1451, 1453, 1455, 1457, 1459, 1461, 1463, 1465, 1467, 1469, 1471, 1473, 1475, 1477, 1479, 1481, 1483, 1485, 1487, 1489, 1491, 1493, 1495, 1497, 1499, 1501, 1503, 1505, 1507, 1509, 1511, 1513, 1515, 1517, 1519, 1521, 1523, 1525, 1527, 1529, 1531, 1533, 1535, 1537, 1539, 1541, 1543, 1545, 1547, 1549, 1551, 1553, 1555, 1557, 1559, 1561, 1563, 1565, 1567, 1569, 1571, 1573, 1575, 1577, 1579, 1581, 1583, 1585, 1587, 1589, 1591, 1593, 1595, 1597, 1599, 1601, 1603, 1605, 1607, 1609, 1611, 1613, 1615, 1617, 1619, 1621, 1623, 1625, 1627, 1629, 1631, 1633, 1635, 1637, 1639, 1641, 1643, 1645, 1647, 1649, 1651, 1653, 1655, 1657, 1659, 1661, 1663, 1665, 1667, 1669, 1671, 1673, 1675, 1677, 1679, 1681, 1683, 1685, 1687, 1689, 1691, 1693, 1695, 1697, 1699, 1701, 1703, 1705, 1707, 1709, 1711, 1713, 1715, 1717, 1719, 1721, 1723, 1725, 1727, 1729, 1731, 1733, 1735, 1737, 1739, 1741, 1743, 1745, 1747, 1749, 1751, 1753, 1755, 1757, 1759, 1761, 1763, 1765, 1767, 1769, 1771, 1773, 1775, 1777, 1779, 1781, 1783, 1785, 1787, 1789, 1791, 1793, 1795, 1797, 1799, 1801, 1803, 1805, 1807, 1809, 1811, 1813, 1815, 1817, 1819, 1821, 1823, 1825, 1827, 1829, 1831, 1833, 1835, 1837, 1839, 1841, 1843, 1845, 1847, 1849, 1851, 1853, 1855, 1857, 1859, 1861, 1863, 1865, 1867, 1869, 1871, 1873, 1875, 1877, 1879, 1881, 1883, 1885, 1887, 1889, 1891, 1893, 1895, 1897, 1899, 1901, 1903, 1905, 1907, 1909, 1911, 1913, 1915, 1917, 1919, 1921, 1923, 1925, 1927, 1929, 1931, 1933, 1935, 1937, 1939, 1941, 1943, 1945, 1947, 1949, 1951, 1953, 1955, 1957, 1959, 1961, 1963, 1965, 1967, 1969, 1971, 1973, 1975, 1977, 1979, 1981, 1983, 1985, 1987, 1989, 1991, 1993, 1995, 1997, 1999, 2001, 2003, 2005, 2007, 2009, 2011, 2013, 2015, 2017, 2019, 2021, 2023, 2025, 2027, 2029, 2031, 2033, 2035, 2037, 2039, 2041, 2043, 2045, 2047, 2049, 2051, 2053, 2055, 2057, 2059, 2061, 2063, 2065, 2067, 2069, 2071, 2073, 2075, 2077, 2079, 2081, 2083, 2085, 2087, 2089, 2091, 2093, 2095, 2097, 2099, 2101, 2103, 2105, 2107, 2109, 2111, 2113, 2115, 2117, 2119, 2121, 2123, 2125, 2127, 2129, 2131, 2133, 2135, 2137, 2139, 2141, 2143, 2145, 2147, 2149, 2151, 2153, 2155, 2157, 2159, 2161, 2163, 2165, 2167, 2169, 2171, 2173, 2175, 2177, 2179, 2181, 2183, 2185, 2187, 2189, 2191, 2193, 2195, 2197, 2199, 2201, 2203, 2205, 2207, 2209, 2211, 2213, 2215, 2217, 2219, 2221, 2223, 2225, 2227, 2229, 2231, 2233, 2235, 2237, 2239, 2241, 2243, 2245, 2247, 2249, 2251, 2253, 2255, 2257, 2259, 2261, 2263, 2265, 2267, 2269, 2271, 2273, 2275, 2277, 2279, 2281, 2283, 2285, 2287, 2289, 2291, 2293, 2295, 2297, 2299, 2301, 2303, 2305, 2307, 2309, 2311, 2313, 2315, 2317, 2319, 2321, 2323, 2325, 2327, 2329, 2331, 2333, 2335, 2337, 2339, 2341, 2343, 2345, 2347, 2349, 2351, 2353, 2355, 2357, 2359, 2361, 2363, 2365, 2367, 2369, 2371, 2373, 2375, 2377, 2379, 2381, 2383, 2385, 2387, 2389, 2391, 2393, 2395, 2397, 2399, 2401, 2403, 2405, 2407, 2409, 2411, 2413, 2415, 2417, 2419, 2421, 2423, 2425, 2427, 2429, 2431, 2433, 2435, 2437, 2439, 2441, 2443, 2445, 2447, 2449, 2451, 2453, 2455, 2457, 2459, 2461, 2463, 2465, 2467, 2469, 2471, 2473, 2475, 2477, 2479, 2481, 2483, 2485, 2487, 2489, 2491, 2493, 2495, 2497, 2499, 2501, 2503, 2505, 2507, 2509, 2511, 2513, 2515, 2517, 2519, 2521, 2523, 2525, 2527, 2529, 2531, 2533, 2535, 2537, 2539, 2541, 2543, 2545, 2547, 2549, 2551, 2553, 2555, 2557, 2559, 2561, 2563, 2565, 2567, 2569, 2571, 2573, 2575, 2577, 2579, 2581, 2583, 2585, 2587, 2589, 2591, 2593, 2595, 2597, 2599, 2601, 2603, 2605, 2607, 2609, 2611, 2613, 2615, 2617, 2619, 2621, 2623, 2625, 2627, 2629, 2631, 2633, 2635, 2637, 2639, 2641, 2643, 2645, 2647, 2649, 2651, 2653, 2655, 2657, 2659, 2661, 2663, 2665, 2667, 2669, 2671, 2673, 2675, 2677, 2679, 2681, 2683, 2685, 2687, 2689, 2691, 2693, 2695, 2697, 2699, 2701, 2703, 2705, 2707, 2709, 2711, 2713, 2715, 2717, 2719, 2721, 2723, 2725, 2727, 2729, 2731, 2733, 2735, 2737, 2739, 2741, 2743, 2745, 2747, 2749, 2751, 2753, 2755, 2757, 2759, 2761, 2763, 2765, 2767, 2769, 2771, 2773, 2775, 2777, 2779, 2781, 2783, 2785, 2787, 2789, 2791, 2793, 2795, 2797, 2799, 2801, 2803, 2805, 2807, 2809, 2811, 2813, 2815, 2817, 2819, 2821, 2823, 2825, 2827, 2829, 2831, 2833, 2835, 2837, 2839, 2841, 2843, 2845, 2847, 2849, 2851, 2853, 2855, 2857, 2859, 2861, 2863, 2865, 2867, 2869, 2871, 2873, 2875, 2877, 2879, 2881, 2883, 2885, 2887, 2889, 2891, 2893, 2895, 2897, 2899, 2901, 2903, 2905, 2907, 2909, 2911, 2913, 2915, 2917, 2919, 2921, 2923, 2925, 2927, 2929, 2931, 2933, 2935, 2937, 2939, 2941, 2943, 2945, 2947, 2949, 2951, 2953, 2955, 2957, 2959, 2961, 2963, 2965, 2967, 2969, 2971, 2973, 2975, 2977, 2979, 2981, 2983, 2985, 2987, 2989, 2991, 2993, 2995, 2997, 2999, 3001, 3003, 3005, 3007, 3009, 3011, 3013, 3015, 3017, 3019, 3021, 3023, 3025, 3027, 3029, 3031, 3033, 3035, 3037, 3039, 3041, 3043, 3045, 3047, 3049, 3051, 3053, 3055, 3057, 3059, 3061, 3063, 3065, 3067, 3069, 3071, 3073, 3075, 3077, 3079, 3081, 3083, 3085, 3087, 3089, 3091, 3093, 3095, 3097, 3099, 3101, 3103, 3105, 3107, 3109, 3111, 3113, 3115, 3117, 3119, 3121, 3123, 3125, 3127, 3129, 3131, 3133, 3135, 3137, 3139, 3141, 3143, 3145, 3147, 3149, 3151, 3153, 3155, 3157, 3159, 3161, 3163, 3165, 3167, 3169, 3171, 3173, 3175, 3177, 3179, 3181, 3183, 3185, 3187, 3189, 3191, 3193, 3195, 3197, 3199, 3201, 3203, 3205, 3207, 3209, 3211, 3213, 3215, 3217, 3219, 3221, 3223, 3225, 3227, 3229, 3231, 3233, 3235, 3237, 3239, 3241, 3243, 3245, 3247, 3249, 3251, 3253, 3255, 3257, 3259, 3261, 3263, 3265, 3267, 3269, 3271, 3273, 3275, 3277, 3279, 3281, 3283, 3285, 3287, 3289, 3291, 3293, 3295, 3297, 3299, 3301, 3303, 3305, 3307, 3309, 3311, 3313, 3315, 3317, 3319, 3321, 3323, 3325, 3327, 3329, 3331, 3333, 3335, 3337, 3339, 3341, 3343, 3345, 3347, 3349, 3351, 3353, 3355, 3357, 3359, 3361, 3363, 3365, 3367, 3369, 3371, 3373, 3375, 3377, 3379, 3381, 3383, 3385, 3387, 3389, 3391, 3393, 3395, 3397, 3399, 3401, 3403, 3405, 3407, 3409, 3411, 3413, 3415, 3417, 3419, 3421, 3423, 3425, 3427, 3429, 3431, 3433, 3435, 3437, 3439, 3441, 3443, 3445, 3447, 3449, 3451, 3453, 3455, 3457, 3459, 3461, 3463, 3465, 3467, 3469, 3471, 3473, 3475, 3477, 3479, 3481, 3483, 3485, 3487, 3489, 3491, 3493, 3495, 3497, 3499, 3501, 3503, 3505, 3507, 3509, 3511, 3513, 3515, 3517, 3519, 3521, 3523, 3525, 3527, 3529, 3531, 3533, 3535, 3537, 3539, 3541, 3543, 3545, 3547, 3549, 3551, 3553, 3555, 3557, 3559, 3561, 3563, 3565, 3567, 3569, 3571, 3573, 3575, 3577, 3579, 3581, 3583, 3585, 3587, 3589, 3591, 3593, 3595, 3597, 3599, 3601, 3603, 3605, 3607, 3609, 3611, 3613, 3615, 3617, 3619, 3621, 3623, 3625, 3627, 3629, 3631, 3633, 3635, 3637, 3639, 3641, 3643, 3645, 3647, 3649, 3651, 3653, 3655, 3657, 3659, 3661, 3663, 3665, 3667, 3669, 3671, 3673, 3675, 3677, 3679, 3681, 3683, 3685, 3687, 3689, 3691, 3693, 3695, 3697, 3699, 3701, 3703, 3705, 3707, 3709, 3711, 3713, 3715, 3717, 3719, 3721, 3723, 3725, 3727, 3729, 3731, 3733, 3735, 3737, 3739, 3741, 3743, 3745, 3747, 3749, 3751, 3753, 3755, 3757, 3759, 3761, 3763, 3765, 3767, 3769, 3771, 3773, 3775, 3777, 3779, 3781, 3783, 3785, 3787, 3789, 3791, 3793, 3795, 3797, 3799, 3801, 3803, 3805, 3807, 3809, 3811, 3813, 3815, 3817, 3819, 3821, 3823, 3825, 3827, 3829, 3831, 3833, 3835, 3837, 3839, 3841, 3843, 3845, 3847, 3849, 3851, 3853, 3855, 3857, 3859, 3861, 3863, 3865, 3867, 3869, 3871, 3873, 3875, 3877, 3879, 3881, 3883, 3885, 3887, 3889, 3891, 3893, 3895, 3897, 3899, 3901, 3903, 3905, 3907, 3909, 3911, 3913, 3915, 3917, 3919, 3921, 3923, 3925, 3927, 3929, 3931, 3933, 3935, 3937, 3939, 3941, 3943, 3945, 3947, 3949, 3951, 3953, 3955, 3957, 3959, 3961, 3963, 3965, 3967, 3969, 3971, 3973, 3975, 3977, 3979, 3981, 3983, 3985, 3987, 3989, 3991, 3993, 3995, 3997, 3999, 4001, 4003, 4005, 4007, 4009, 4011, 4013, 4015, 4017, 4019, 4021, 4023, 4025, 4027, 4029, 4031, 4033, 4035, 4037</p>	

- zone 1 - terminal/commercial buildings/hotel/plaza/parking
- Zone 2 - general aviation hangers
- Zone 3 - private hangers
- Zone 4 - airport services



- 20m
- 20m
- 20m
- 20m
- 15m
- 20m
- 20m
- 20m
- 20m
- 20m
- 20m
- 15m
- 10m
- 10m

ZONE 2

ZONE 3

ZONE 3

LEGEND

- Terminal part + building
- General aviation part + building
- Cargo part + building
- Other part + building
- Airport services building
- Airport services building
- Security fence and gate

NO.	DESCRIPTION	REMARKS
1	Runway	3000m x 60m
2	Taxiway	100m x 30m
3	Apron	100m x 100m
4	Terminal building	100m x 100m
5	General aviation hangar	100m x 100m
6	Cargo hangar	100m x 100m
7	Other hangar	100m x 100m
8	Airport services building	100m x 100m
9	Security fence and gate	100m x 100m
10

CAPE WINELANDS AIRPORT LTD

PROJECT: CWA Master Plan

DATE: 15-07-2023

SCALE: 1:1000

APPROVED: [Signature]

NRDO

Master Plan Planning Activity Level 4 (PAL4)

DATE: 15-07-2023

SCALE: 1:1000

APPROVED: [Signature]

