

**SCREENING REPORT FOR AN ENVIRONMENTAL AUTHORIZATION AS  
REQUIRED BY THE 2014 EIA REGULATIONS – PROPOSED SITE  
ENVIRONMENTAL SENSITIVITY**

**EIA Reference number:** -

**Project name:** Grootvlei No. 225, Caledon, S24G Application

**Project title:** Existing Unauthorised Poultry Rearing

**Date screening report generated:** 16/05/2023 12:16:27

**Applicant:** Bapchix (Pty) Ltd

**Compiler:** PHS Consulting

**Compiler signature:**  
.....

**Application Category:** Agriculture\_Forestry\_Fisheries|Animal Production

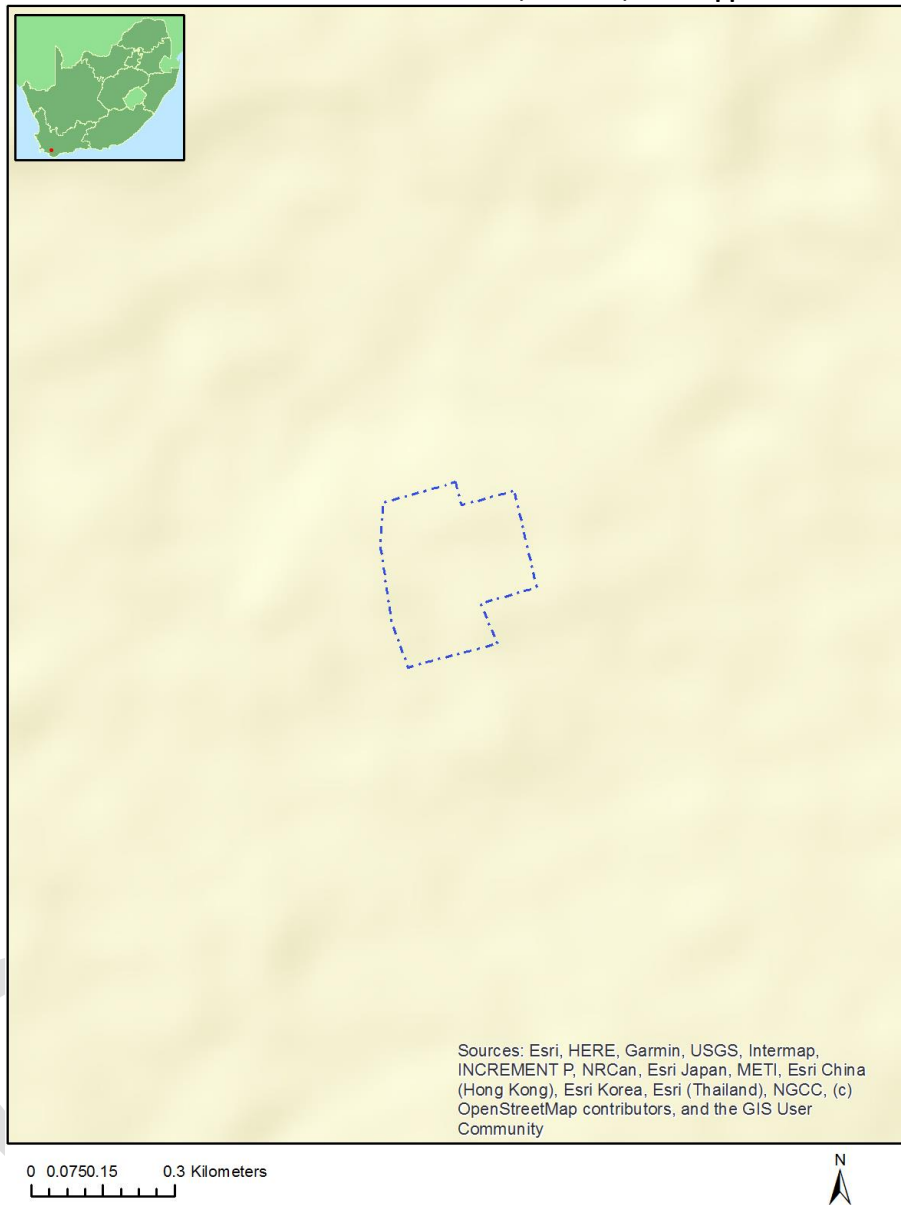
# Table of Contents

- Proposed Project Location ..... 3
  - Orientation map 1: General location ..... 3
- Map of proposed site and relevant area(s) ..... 4
  - Cadastral details of the proposed site ..... 4
  - Wind and Solar developments with an approved Environmental Authorisation or applications under consideration within 30 km of the proposed area ..... 4
  - Environmental Management Frameworks relevant to the application ..... 4
- Environmental screening results and assessment outcomes ..... 5
  - Relevant development incentives, restrictions, exclusions or prohibitions ..... 5
  - Proposed Development Area Environmental Sensitivity ..... 5
  - Specialist assessments identified ..... 5
- Results of the environmental sensitivity of the proposed area ..... 7
  - MAP OF RELATIVE AGRICULTURE THEME SENSITIVITY ..... 7
  - MAP OF RELATIVE ANIMAL SPECIES THEME SENSITIVITY ..... 8
  - MAP OF RELATIVE AQUATIC BIODIVERSITY THEME SENSITIVITY ..... 9
  - MAP OF RELATIVE ARCHAEOLOGICAL AND CULTURAL HERITAGE THEME SENSITIVITY ..... 10
  - MAP OF RELATIVE CIVIL AVIATION THEME SENSITIVITY ..... 10
  - MAP OF RELATIVE DEFENCE THEME SENSITIVITY ..... 11
  - MAP OF RELATIVE PALEONTOLOGY THEME SENSITIVITY ..... 12
  - MAP OF RELATIVE PLANT SPECIES THEME SENSITIVITY ..... 13
  - MAP OF RELATIVE TERRESTRIAL BIODIVERSITY THEME SENSITIVITY ..... 15

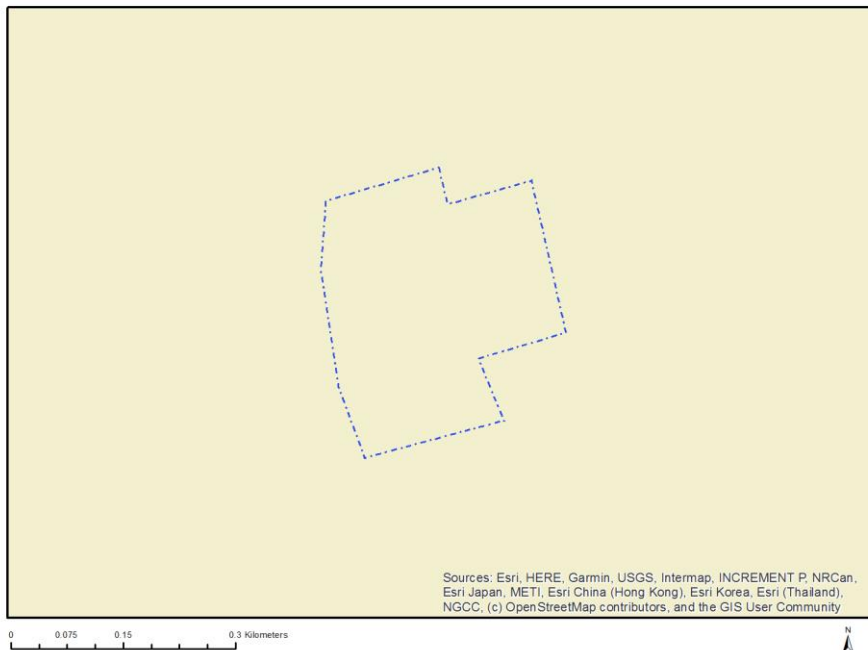
# Proposed Project Location

## Orientation map 1: General location

**General Orientation: Grootvlei No. 225, Caledon, S24G Application**



## Map of proposed site and relevant area(s)



## Cadastral details of the proposed site

Property details:

No	Farm Name	Farm/ Erf No	Portion	Latitude	Longitude	Property Type
1	GROOT VALLEY	225	0	34°10'19.89S	19°36'8.07E	Farm
2	GROOT VALLEY	225	0	34°10'16.24S	19°36'24.62E	Farm Portion

Development footprint<sup>1</sup> vertices:  
No development footprint(s) specified.

## Wind and Solar developments with an approved Environmental Authorisation or applications under consideration within 30 km of the proposed area

No nearby wind or solar developments found.

## Environmental Management Frameworks relevant to the application

No intersections with EMF areas found.

---

<sup>1</sup> "development footprint", means the area within the site on which the development will take place and includes all ancillary developments for example roads, power lines, boundary walls, paving etc. which require vegetation clearance or which will be disturbed and for which the application has been submitted.

## Environmental screening results and assessment outcomes

The following sections contain a summary of any development incentives, restrictions, exclusions or prohibitions that apply to the proposed development site as well as the most environmental sensitive features on the site based on the site sensitivity screening results for the application classification that was selected. The application classification selected for this report is:

**Agriculture\_Forestry\_Fisheries|Animal Production.**

### Relevant development incentives, restrictions, exclusions or prohibitions

The following development incentives, restrictions, exclusions or prohibitions and their implications that apply to this site are indicated below.

Incentive, restriction or prohibition	Implication
Renewable energy development zones 1-Overberg	<a href="https://screening.environment.gov.za/ScreeningDownloads/DevelopmentZones/Combined_REDZ.pdf">https://screening.environment.gov.za/ScreeningDownloads/DevelopmentZones/Combined_REDZ.pdf</a>

### Proposed Development Area Environmental Sensitivity

The following summary of the development site environmental sensitivities is identified. Only the highest environmental sensitivity is indicated. The footprint environmental sensitivities for the proposed development footprint as identified, are indicative only and must be verified on site by a suitably qualified person before the specialist assessments identified below can be confirmed.

Theme	Very High sensitivity	High sensitivity	Medium sensitivity	Low sensitivity
Agriculture Theme		X		
Animal Species Theme		X		
Aquatic Biodiversity Theme				X
Archaeological and Cultural Heritage Theme				X
Civil Aviation Theme		X		
Defence Theme				X
Paleontology Theme	X			
Plant Species Theme			X	
Terrestrial Biodiversity Theme	X			

### Specialist assessments identified

Based on the selected classification, and the known impacts associated with the proposed development, the following list of specialist assessments have been identified for inclusion in the assessment report. It is the responsibility of the EAP to confirm this list and to motivate in the assessment report, the reason for not including any of the identified specialist study including the provision of photographic evidence of the site situation.

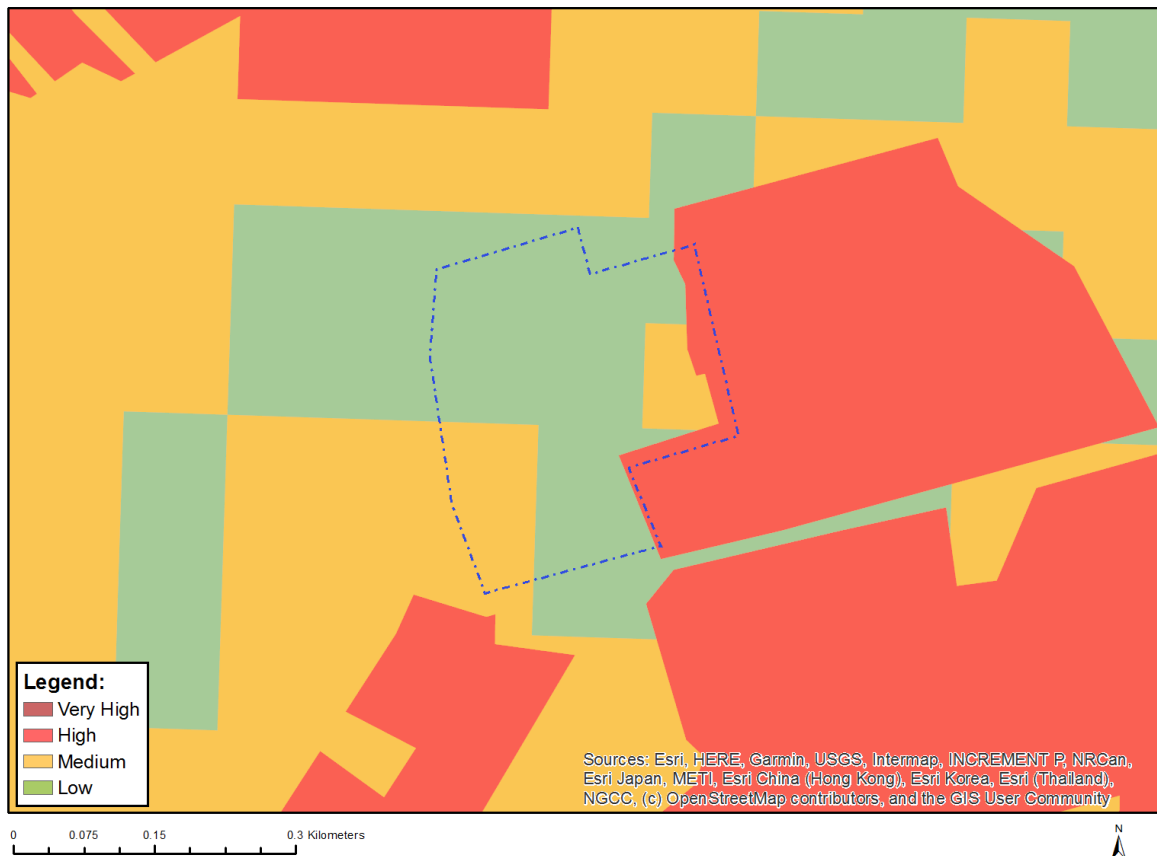
No	Specialist assessment	Assessment Protocol
1	Landscape/Visual Impact Assessment	<a href="https://screening.environment.gov.za/ScreeningDownloads/AssessmentProtocols/Gazetted_General_Requirement_Assessment_P">https://screening.environment.gov.za/ScreeningDownloads/AssessmentProtocols/Gazetted_General_Requirement_Assessment_P</a>

		<a href="#">rotocols.pdf</a>
2	Archaeological and Cultural Heritage Impact Assessment	<a href="https://screening.environment.gov.za/ScreeningDownloads/AssessmentProtocols/Gazetted_General_Requirement_Assessment_Protocols.pdf">https://screening.environment.gov.za/ScreeningDownloads/AssessmentProtocols/Gazetted_General_Requirement_Assessment_Protocols.pdf</a>
3	Palaeontology Impact Assessment	<a href="https://screening.environment.gov.za/ScreeningDownloads/AssessmentProtocols/Gazetted_General_Requirement_Assessment_Protocols.pdf">https://screening.environment.gov.za/ScreeningDownloads/AssessmentProtocols/Gazetted_General_Requirement_Assessment_Protocols.pdf</a>
4	Terrestrial Biodiversity Impact Assessment	<a href="https://screening.environment.gov.za/ScreeningDownloads/AssessmentProtocols/Gazetted_Terrestrial_Biodiversity_Assessment_Protocols.pdf">https://screening.environment.gov.za/ScreeningDownloads/AssessmentProtocols/Gazetted_Terrestrial_Biodiversity_Assessment_Protocols.pdf</a>
5	Aquatic Biodiversity Impact Assessment	<a href="https://screening.environment.gov.za/ScreeningDownloads/AssessmentProtocols/Gazetted_Aquatic_Biodiversity_Assessment_Protocols.pdf">https://screening.environment.gov.za/ScreeningDownloads/AssessmentProtocols/Gazetted_Aquatic_Biodiversity_Assessment_Protocols.pdf</a>
6	Hydrology Assessment	<a href="https://screening.environment.gov.za/ScreeningDownloads/AssessmentProtocols/Gazetted_General_Requirement_Assessment_Protocols.pdf">https://screening.environment.gov.za/ScreeningDownloads/AssessmentProtocols/Gazetted_General_Requirement_Assessment_Protocols.pdf</a>
7	Traffic Impact Assessment	<a href="https://screening.environment.gov.za/ScreeningDownloads/AssessmentProtocols/Gazetted_General_Requirement_Assessment_Protocols.pdf">https://screening.environment.gov.za/ScreeningDownloads/AssessmentProtocols/Gazetted_General_Requirement_Assessment_Protocols.pdf</a>
8	Socio-Economic Assessment	<a href="https://screening.environment.gov.za/ScreeningDownloads/AssessmentProtocols/Gazetted_General_Requirement_Assessment_Protocols.pdf">https://screening.environment.gov.za/ScreeningDownloads/AssessmentProtocols/Gazetted_General_Requirement_Assessment_Protocols.pdf</a>
9	Ambient Air Quality Impact Assessment	<a href="https://screening.environment.gov.za/ScreeningDownloads/AssessmentProtocols/Gazetted_General_Requirement_Assessment_Protocols.pdf">https://screening.environment.gov.za/ScreeningDownloads/AssessmentProtocols/Gazetted_General_Requirement_Assessment_Protocols.pdf</a>
10	Plant Species Assessment	<a href="https://screening.environment.gov.za/ScreeningDownloads/AssessmentProtocols/Gazetted_Plant_Species_Assessment_Protocols.pdf">https://screening.environment.gov.za/ScreeningDownloads/AssessmentProtocols/Gazetted_Plant_Species_Assessment_Protocols.pdf</a>
11	Animal Species Assessment	<a href="https://screening.environment.gov.za/ScreeningDownloads/AssessmentProtocols/Gazetted_Animal_Species_Assessment_Protocols.pdf">https://screening.environment.gov.za/ScreeningDownloads/AssessmentProtocols/Gazetted_Animal_Species_Assessment_Protocols.pdf</a>

## Results of the environmental sensitivity of the proposed area.

The following section represents the results of the screening for environmental sensitivity of the proposed site for relevant environmental themes associated with the project classification. It is the duty of the EAP to ensure that the environmental themes provided by the screening tool are comprehensive and complete for the project. Refer to the disclaimer.

### MAP OF RELATIVE AGRICULTURE THEME SENSITIVITY

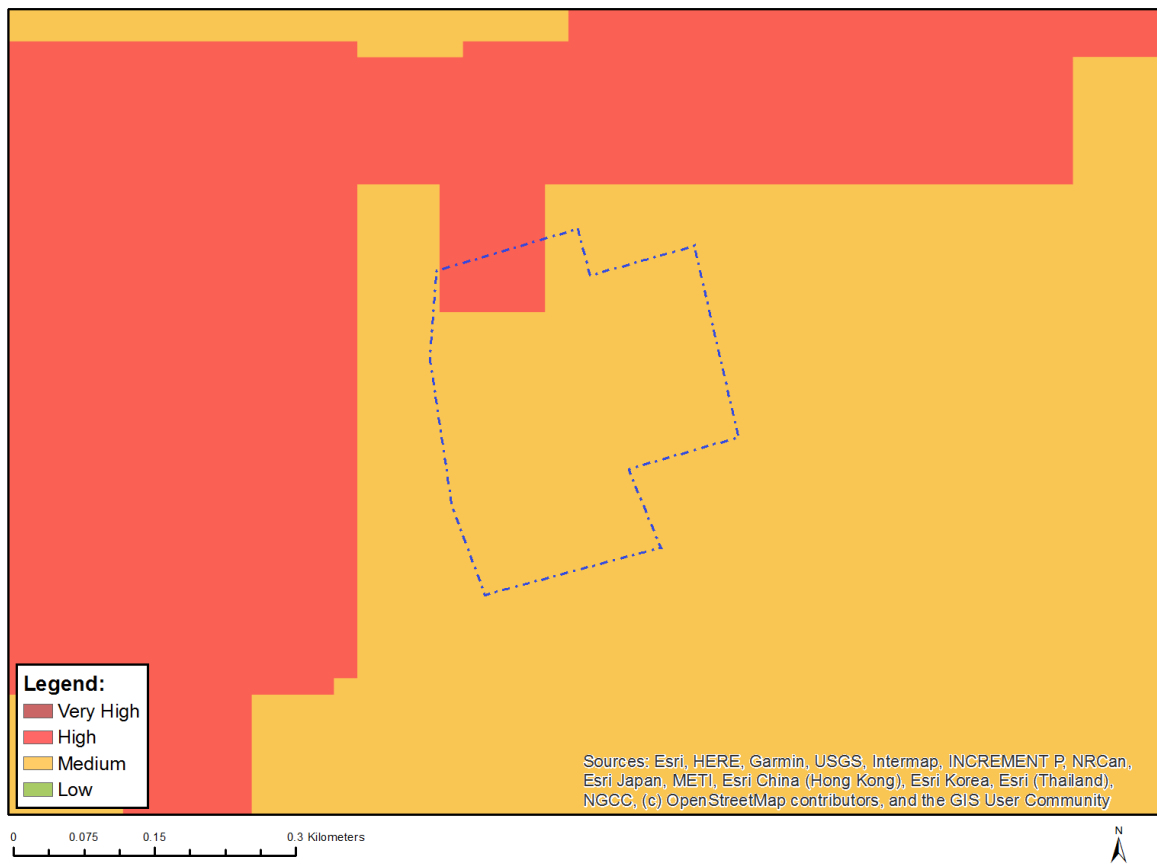


Very High sensitivity	High sensitivity	Medium sensitivity	Low sensitivity
	X		

#### Sensitivity Features:

Sensitivity	Feature(s)
High	Annual Crop Cultivation / Planted Pastures Rotation; Land capability; 01. Very low/02. Very low/03. Low-Very low/04. Low-Very low/05. Low
High	Annual Crop Cultivation / Planted Pastures Rotation; Land capability; 06. Low-Moderate/07. Low-Moderate/08. Moderate
Low	Land capability; 01. Very low/02. Very low/03. Low-Very low/04. Low-Very low/05. Low
Medium	Land capability; 06. Low-Moderate/07. Low-Moderate/08. Moderate

## MAP OF RELATIVE ANIMAL SPECIES THEME SENSITIVITY



Where only a sensitive plant unique number or sensitive animal unique number is provided in the screening report and an assessment is required, the environmental assessment practitioner (EAP) or specialist is required to email SANBI at [eiadatarequests@sanbi.org.za](mailto:eiadatarequests@sanbi.org.za) listing all sensitive species with their unique identifiers for which information is required. The name has been withheld as the species may be prone to illegal harvesting and must be protected. SANBI will release the actual species name after the details of the EAP or specialist have been documented.

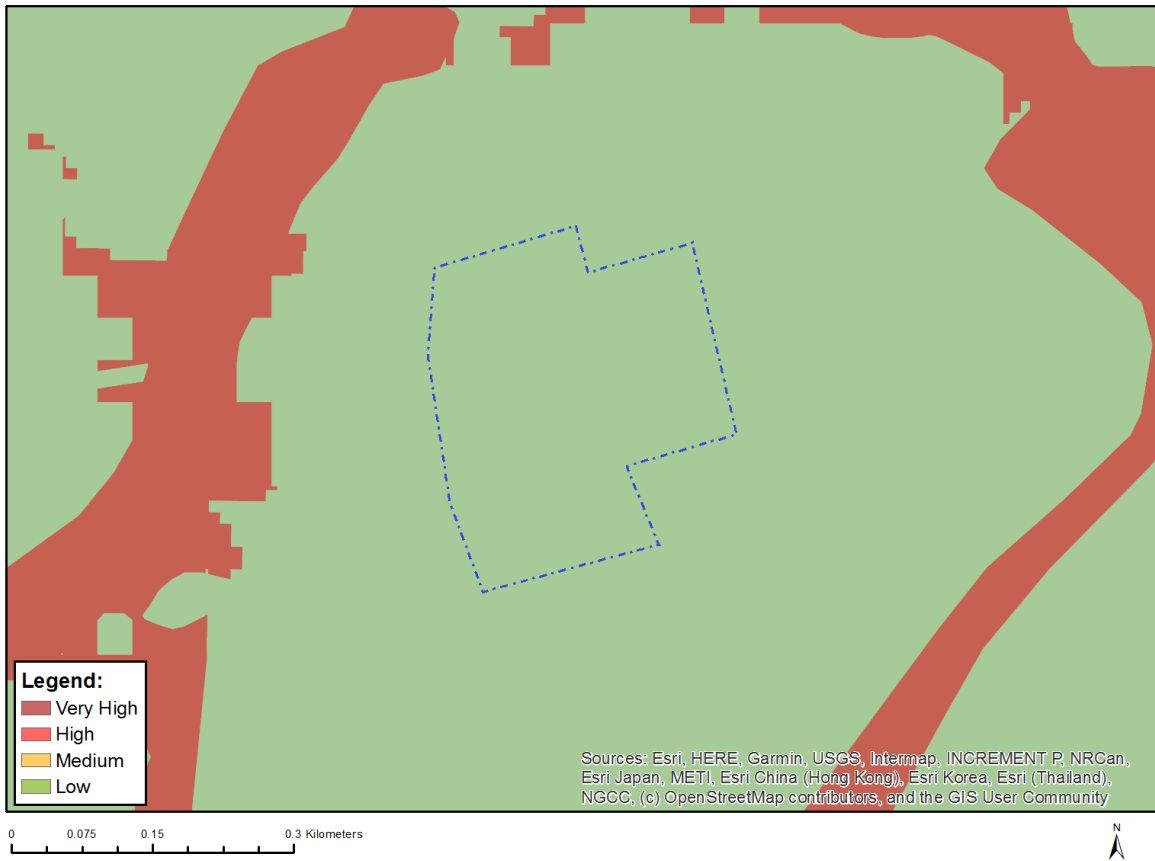
Very High sensitivity	High sensitivity	Medium sensitivity	Low sensitivity
	X		

### Sensitivity Features:

Sensitivity	Feature(s)
High	Aves-Circus maurus
Medium	Insecta-Aloeides caledoni
Medium	Insecta-Aloeides egerides
Medium	Invertebrate-Aneuryphymus montanus



## MAP OF RELATIVE AQUATIC BIODIVERSITY THEME SENSITIVITY



Very High sensitivity	High sensitivity	Medium sensitivity	Low sensitivity
			X

### Sensitivity Features:

Sensitivity	Feature(s)
Low	Low sensitivity

MAP OF RELATIVE ARCHAEOLOGICAL AND CULTURAL HERITAGE THEME SENSITIVITY

Unable to obtain map image.

Very High sensitivity	High sensitivity	Medium sensitivity	Low sensitivity
			X

Sensitivity Features:

Sensitivity	Feature(s)
Low	Low sensitivity

MAP OF RELATIVE CIVIL AVIATION THEME SENSITIVITY

Unable to obtain map image.

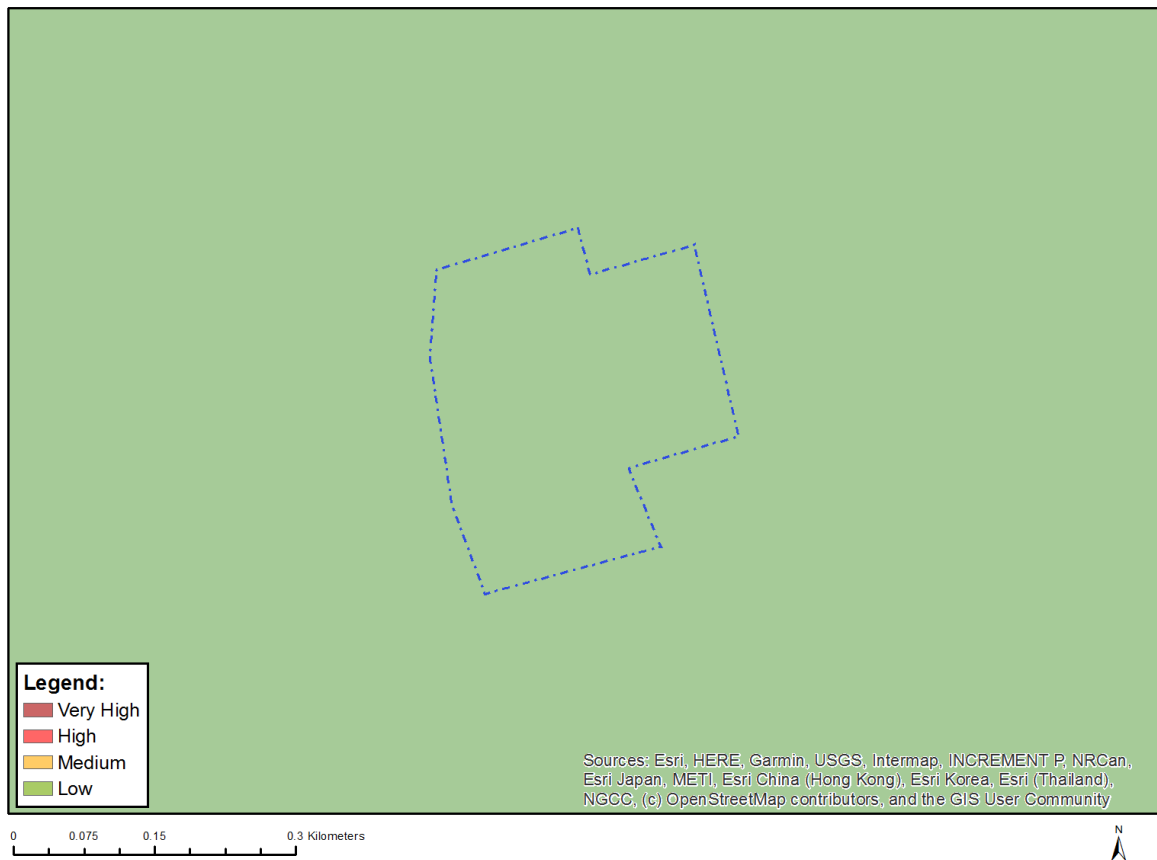
Very High sensitivity	High sensitivity	Medium sensitivity	Low sensitivity
	X		

Sensitivity Features:

Sensitivity	Feature(s)

High	Within 8 km of other civil aviation aerodrome
------	---

## MAP OF RELATIVE DEFENCE THEME SENSITIVITY

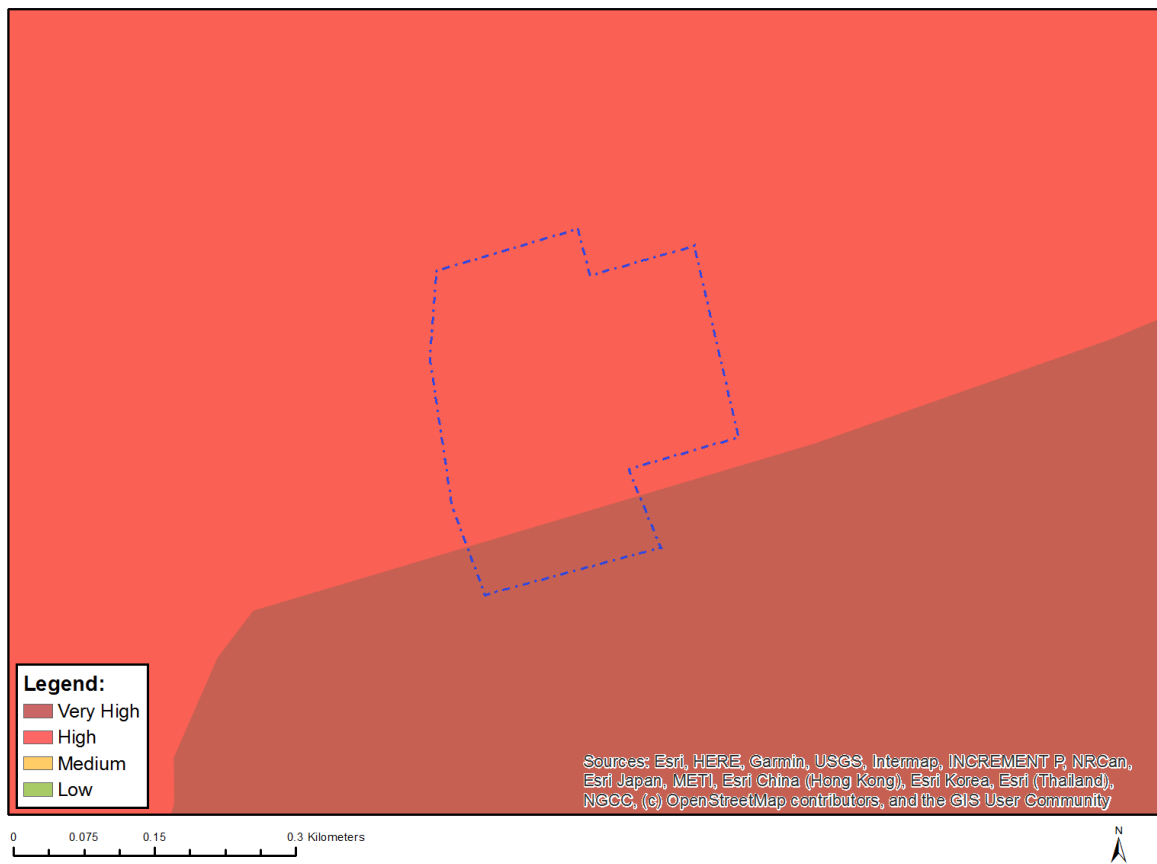


Very High sensitivity	High sensitivity	Medium sensitivity	Low sensitivity
			X

### Sensitivity Features:

Sensitivity	Feature(s)
Low	Low Sensitivity

## MAP OF RELATIVE PALEONTOLOGY THEME SENSITIVITY

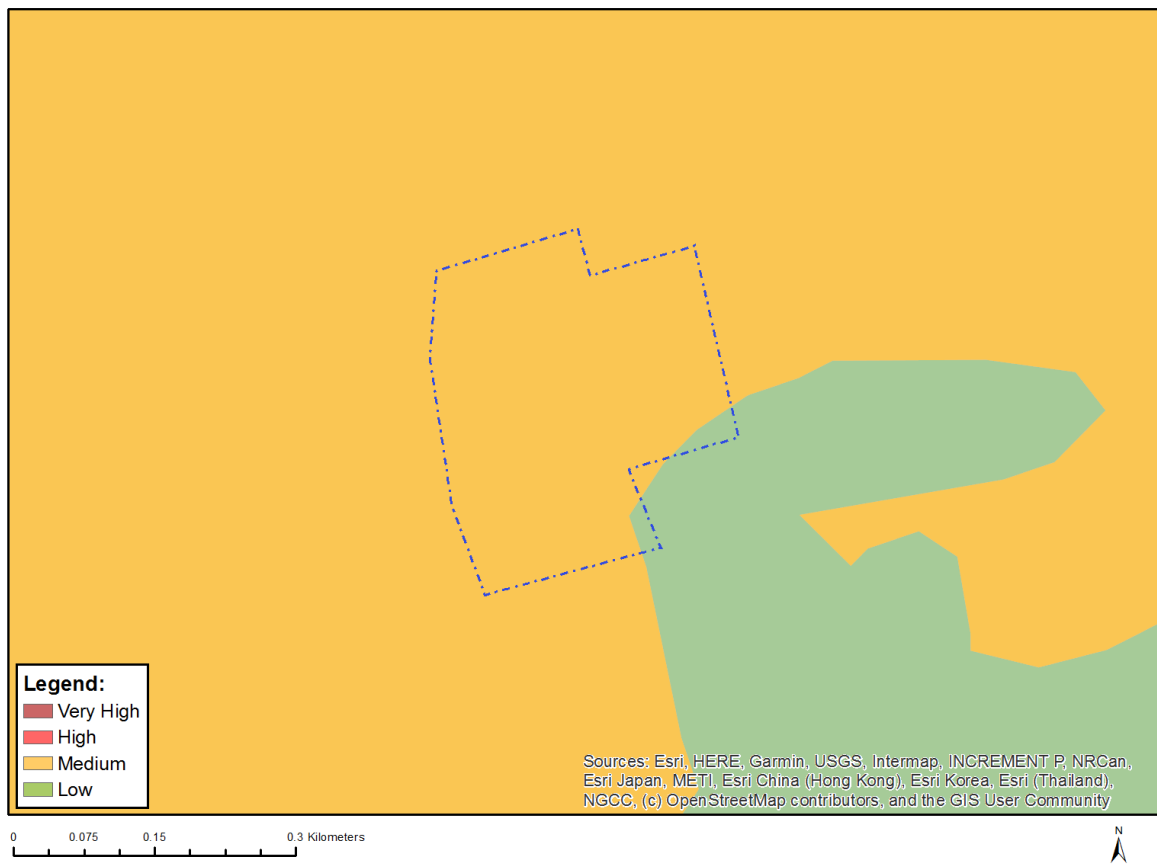


Very High sensitivity	High sensitivity	Medium sensitivity	Low sensitivity
X			

### Sensitivity Features:

Sensitivity	Feature(s)
High	Features with a High paleontological sensitivity
Very High	Features with a Very High paleontological sensitivity

## MAP OF RELATIVE PLANT SPECIES THEME SENSITIVITY



Where only a sensitive plant unique number or sensitive animal unique number is provided in the screening report and an assessment is required, the environmental assessment practitioner (EAP) or specialist is required to email SANBI at [eiadatarequests@sanbi.org.za](mailto:eiadatarequests@sanbi.org.za) listing all sensitive species with their unique identifiers for which information is required. The name has been withheld as the species may be prone to illegal harvesting and must be protected. SANBI will release the actual species name after the details of the EAP or specialist have been documented.

Very High sensitivity	High sensitivity	Medium sensitivity	Low sensitivity
		X	

### Sensitivity Features:

Sensitivity	Feature(s)
Low	Low Sensitivity
Medium	Acrodon subulatus
Medium	Ruschia schollii
Medium	Drosanthemum flavum
Medium	Argyrobium pachyphyllum
Medium	Aspalathus millefolia
Medium	Aspalathus oblongifolia
Medium	Aspalathus rosea
Medium	Aspalathus smithii
Medium	Otholobium pungens
Medium	Otholobium sp. nov. (Stirton & Zantovska 11281 NBG)
Medium	Podalyria orbicularis
Medium	Leucadendron coniferum

Medium	<i>Leucadendron platyspermum</i>
Medium	<i>Leucospermum hypophyllocarpodendron</i> subsp. <i>hypophyllocarpodendron</i>
Medium	<i>Protea longifolia</i>
Medium	<i>Protea restionifolia</i>
Medium	<i>Serruria inconspicua</i>
Medium	<i>Chenopodiopsis retrorsa</i>
Medium	<i>Lobostemon capitatus</i>
Medium	<i>Echiostachys ecklonianus</i>
Medium	<i>Echiostachys incanus</i>
Medium	<i>Aristea biflora</i>
Medium	<i>Aristea recisa</i>
Medium	<i>Tritoniopsis elongata</i>
Medium	<i>Hesperantha fibrosa</i>
Medium	Sensitive species 556
Medium	Sensitive species 56
Medium	<i>Sparaxis fragrans</i>
Medium	<i>Sparaxis grandiflora</i> subsp. <i>violacea</i>
Medium	<i>Ixia trinervata</i>
Medium	<i>Ixia longituba</i> subsp. <i>longituba</i>
Medium	Sensitive species 157
Medium	Sensitive species 539
Medium	Sensitive species 499
Medium	Sensitive species 243
Medium	Sensitive species 934
Medium	Sensitive species 650
Medium	<i>Oxalis duriuscula</i>
Medium	<i>Erica floccifera</i>
Medium	<i>Erica paucifolia</i> subsp. <i>squarrosa</i>
Medium	<i>Hermannia lavandulifolia</i>
Medium	Sensitive species 242
Medium	Sensitive species 259
Medium	Sensitive species 714
Medium	<i>Hypodiscus rugosus</i>
Medium	<i>Restio papillosus</i>
Medium	<i>Acrolophia ustulata</i>
Medium	<i>Evotella rubiginosa</i>
Medium	<i>Gnidia humilis</i>
Medium	<i>Metalasia plicata</i>
Medium	<i>Metalasia tenuifolia</i>
Medium	<i>Polyarrhena reflexa</i> subsp. <i>brachyphylla</i>
Medium	<i>Berkheya angusta</i>
Medium	<i>Osteospermum hispidum</i> var. <i>hispidum</i>
Medium	<i>Euchaetis schlechteri</i>
Medium	<i>Cliffortia monophylla</i>
Medium	<i>Phylica anomala</i>
Medium	<i>Notobubon pungens</i>
Medium	<i>Skiatophytum skiatophytoides</i>
Medium	<i>Lampranthus debilis</i>
Medium	<i>Drosanthemum lavisii</i>
Medium	<i>Xiphotheca reflexa</i>
Medium	<i>Aspalathus lebeckioides</i>
Medium	<i>Aspalathus recurva</i>
Medium	<i>Protea aspera</i>
Medium	<i>Paranomus bolusii</i>
Medium	Sensitive species 593
Medium	Sensitive species 800
Medium	Sensitive species 335
Medium	Sensitive species 521
Medium	Sensitive species 599
Medium	<i>Elegia squamosa</i>

Medium	Restio paludosus
Medium	Restio rigoratus
Medium	Sensitive species 654
Medium	Sensitive species 728
Medium	Pachites bodkinii
Medium	Lachnaea grandiflora
Medium	Cotula pusilla
Medium	Perdicium capense
Medium	Diosma passerinoides

## MAP OF RELATIVE TERRESTRIAL BIODIVERSITY THEME SENSITIVITY



Very High sensitivity	High sensitivity	Medium sensitivity	Low sensitivity
X			

### Sensitivity Features:

Sensitivity	Feature(s)
Very High	Endangered ecosystem_Overberg Sandstone Fynbos
Very High	Critically Endangered ecosystem_Western Ruens Shale Renosterveld