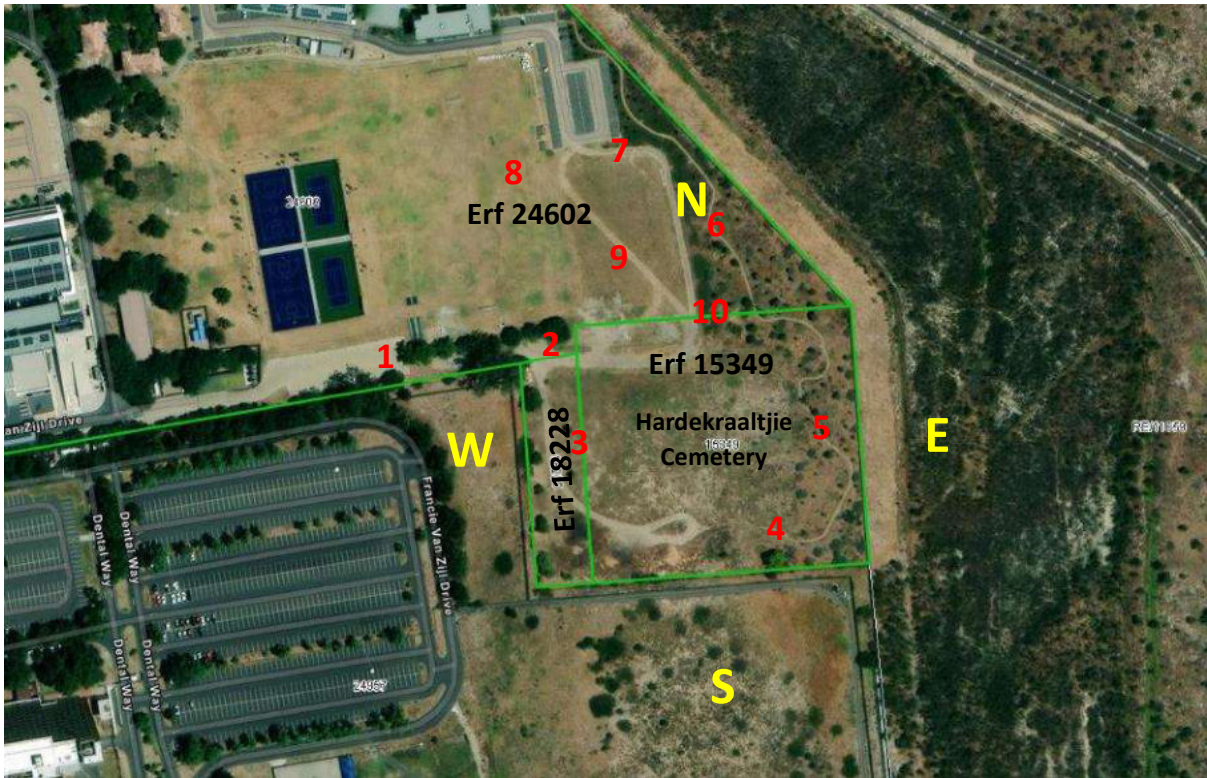


ANNEXURE E: PHOTO REPORT



AERIAL IMAGE: Showing the site in relation to North, East, South & West.



Photo 1: Taken in a westerly direction from position 1 above showing the parking area near the Sportsfields and Cemetery.



Photo 2: Taken in an easterly direction from position 1 above showing the pathway amongst the trees from the parking area leading to the Cemetery with the Sportsfields on the left and Tygerberg Hospital boundary on the right.



Photo 3: Looking through the trees towards the Soccer/ Rugby Field.



Photo 4: Walking along the pathway and treeline in an easterly direction approaching the formal Hardekraaltjie Cemetery.



Photo 5: Looking back along the pathway and treeline in a westerly direction towards the parking area.



Photo 6: Taken in an easterly direction from position 2 in the aerial photo above showing the formal Hardekraaltjie Cemetery to the right and the sportsfields and warm up area to the left.



Photo 7: Taken in a southerly direction from position 2 in the aerial photo above showing the Hardekraaltjie Cemetery to the left and the boundary fence shared with the Tygerberg Hospital to the right. Note the historical information board up on site (red circle).

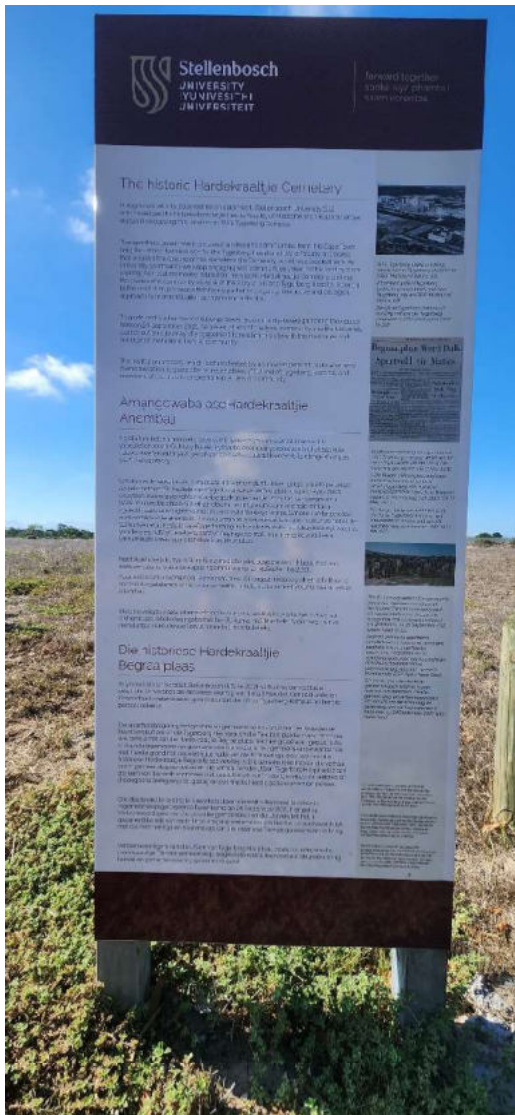


Photo 8: Showing the existing information board erected on site telling the history of the site.

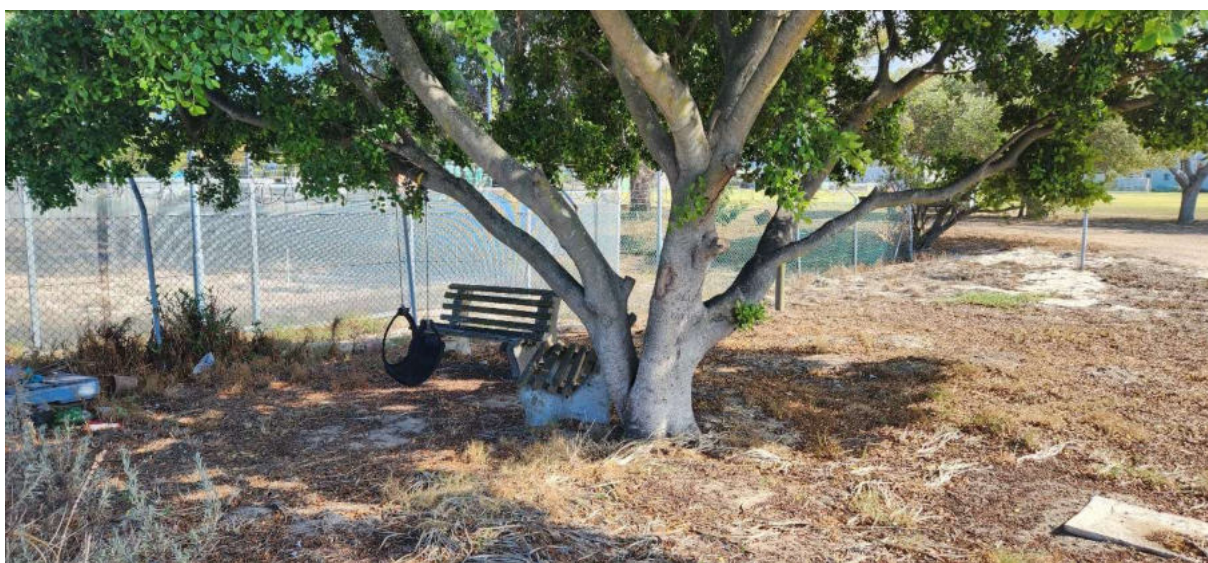


Photo 9: Showing existing benches scattered around the site and large trees available for shade within the vicinity of point 2 (page 1).



Photo 10: Taken in a southerly direction from position 3 showing Tygerberg Hospital towards the right. The composting heaps are still visible in these images, however they have since been removed.



Photo 11: Taken in a south westerly direction (closer up) showing Tygerberg Hospital towards the right.



Photo 12: Taken in north westerly direction at the same point as photo 11.



Photo 13: Taken in northerly direction at the same point as photo 12.



Photo 14: Taken in a SE direction from position 4 on the aerial image above.



Photo 15: Taken in a northern direction from position 4 (slightly closer to poles) on the aerial image above.



Photo 16: Showing the existing “eco-walk” found along the eastern boundary of the site.



Photo 17: Showing the varied boundary treatments that require attention.



Photo 18: Showing the existing “eco-walk” found along the eastern boundary of the site.



Photo 19: Taken in a westerly direction from position 5 shown on the Aerial Image (page 1) with Tygerberg Hospital in the background.



Photo 20: Taken in a SW direction close to position 6 shown on the Aerial Image (page 1).



Photo 21: Taken in a SW direction from position 6 shown on the Aerial Image (page 1).



Photo 22: Taken in a SE direction close to position 6 showing the boundary fence with Transnet land.



Photo 23: Showing the existing “eco-walk” close to position 6.



Photo 24: Taken in a westerly direction from position 7 on the Aerial Image (page 1).



Photo 25: Taken in a southerly direction close to position 7 showing the practice/ warm up area.



Photo 26: Taken in a southerly direction from position 8 (page 1) showing a section of the soccer/ rugby field.



Photo 27: Taken in a southerly direction showing the area to the right of photo 26. Cricket nets circled in red. Parking area (shown in Photo 1) visible to the right of the cricket nets.



Photo 28: Taken in a southerly direction from position 9 (page 1).



Photo 29: Taken in a westerly direction from position 10 (page 1).



Photo 30: Showing the condition of the central area of the formal Hardekraaltjie Cemetery site looking west.



Photo 31: Showing the condition of the central area of the formal Hardekraaltjie Cemetery site looking north.



Photo 32: Showing a large stand of alien vegetation found on site.

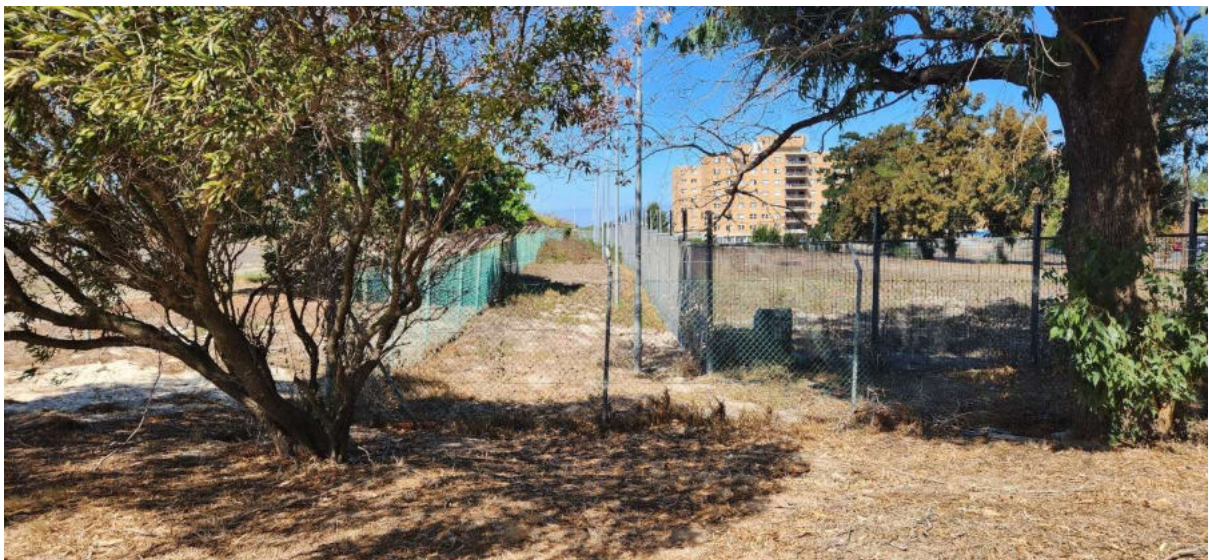


Photo 33: Showing the varied boundary treatments that require attention.