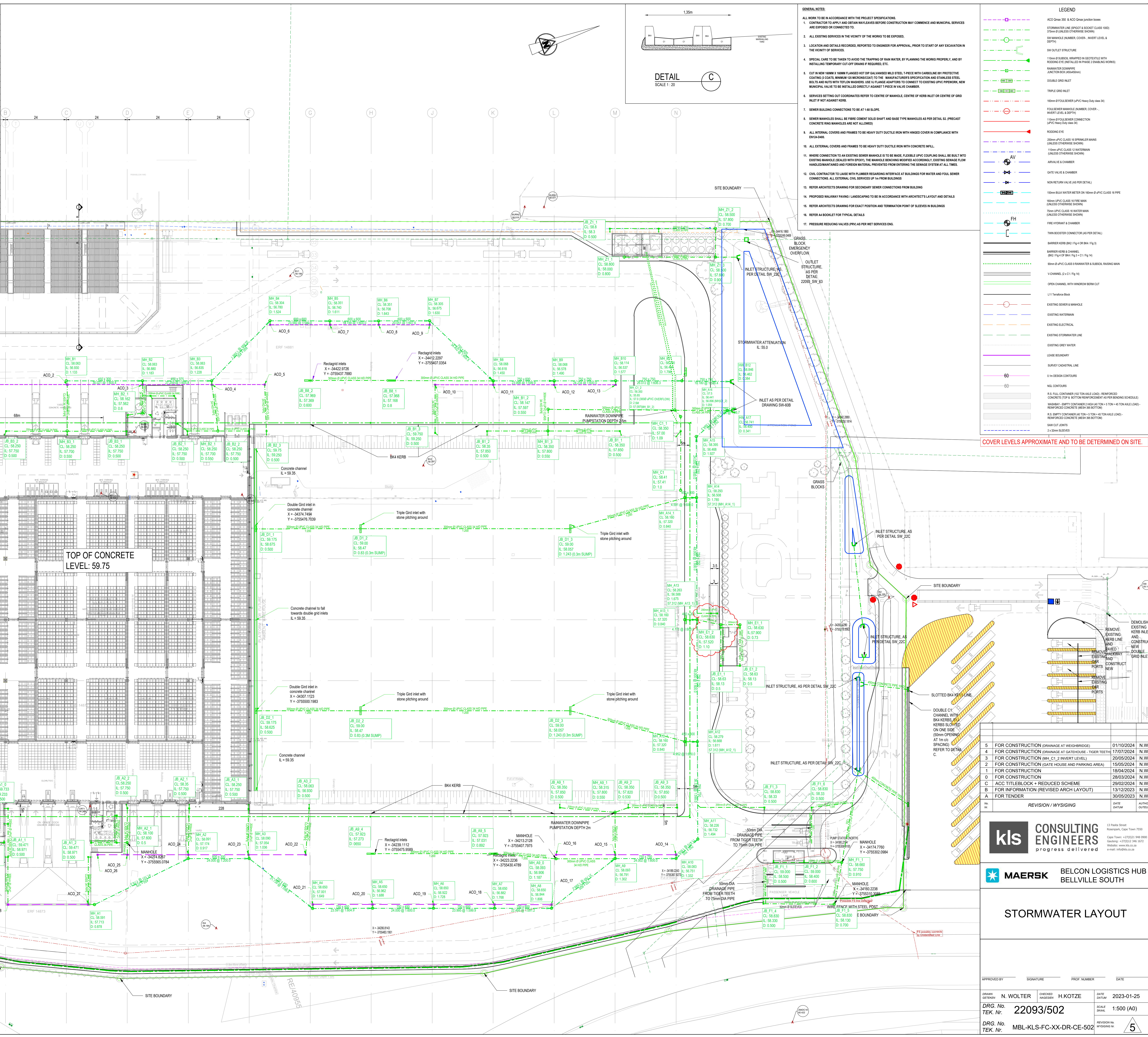


Name	Y-Coord	X-Coord	Cover	MHT	Length	Depth	Slope	Type	Size	Level In	Level Out
MH_A1	34256.12	3755682.26	58.59	57.71							
MH_A2	34256.05	3755644.47	58.09	57.17							
MH_A3	34253.13	3755621.81	58.09	57.05							
MH_A4	34226.38	3755604.73	58.65	57.00							
MH_A5	34218.61	3755482.45	58.65	56.96							
MH_A6	34212.72	3755469.79	58.65	56.92							
MH_A7	34202.78	3755437.15	58.65	56.88							
MH_A8	34195.38	3755415.83	58.65	56.84							
MH_A9	34205.64	3755389.87	58.09	56.79							
MH_A10	34191.72	3755363.22	58.08	56.75							
MH_A11	34202.92	3755342.82	58.29	56.73							
MH_A12	34238.34	3755340.11	58.28	56.67							
MH_A13	34283.72	3755324.45	58.28	56.59							
MH_A14	34293.09	3755308.79	58.29	56.51							
MH_A15	34311.78	3755289.86	58.43	56.47							
MH_A16	34357.38	3755285.93	57.24	56.44							
MH_A17	34393.92	3755284.50	56.74	56.40							
MH_A18	34418.94	3755261.25	56.00	55.06							
MH_A19	34419.75	3755260.27	56.86	55.04							
MH_A20	34298.98	3755242.70	58.16	57.32							
MH_A21	34238.34	3755240.11	58.28	56.67							
MH_A22	34285.29	3755228.98	58.16	57.32							
MH_A23	34283.72	3755224.45	58.28	56.59							
MH_A24	34329.09	3755208.79	58.29	56.51							
MH_A25	34311.78	3755193.12	58.16	57.32							
MH_B1	34454.30	3755272.82	58.06	56.93							
MH_B2	34444.41	3755269.48	58.06	56.88							
MH_B3	34430.40	3755273.75	58.06	56.84							
MH_B4	34440.11	3755444.33	58.30	56.79							
MH_B5	34442.31	3755422.10	58.35	56.74							
MH_B6	34445.99	3755403.87	58.35	56.71							
MH_B7	34429.41	3755385.03	58.30	56.67							
MH_B8	34398.86	3755369.21	58.07	56.62							
MH_B9	34389.91	3755345.95	58.30	56.79							
MH_B10	34382.04	3755323.68	58.11	56.54							
MH_B11	34374.34	3755299.07	58.29	56.49							
MH_B12	34367.79	3755281.04	58.85	56.46							
MH_C	34418.94	3755261.25	56.00	55.06							

Name	Y	X
ACO_1	34464.460	3755661.419
ACO_2	34462.724	3755627.959
ACO_3	34442.970	3755649.986
ACO_4	34433.674	3755674.276
ACO_5	34427.138	3755645.615
ACO_6	34446.680	3755644.827
ACO_7	34440.837	3755642.575
ACO_8	34434.608	3755604.448
ACO_9	34427.963	3755636.521
ACO_10	34404.981	3755631.295
ACO_11	34397.445	3755639.711
ACO_12	34389.630	3755647.054
ACO_13	34381.524	3755634.179
ACO_14	34199.140	3755632.711
ACO_15	34207.040	3755636.334
ACO_16	34214.017	3755640.725
ACO_17	34196.704	3755615.441
ACO_18	34204.212	3755636.636
ACO_19	34212.148	3755649.280
ACO_20	34220.035	3755641.947
ACO_21	34227.782	3755654.187
ACO_22	34247.229	3755650.259
ACO_23	34254.662	3755621.636
ACO_24	34262.469	3755643.977
ACO_25	34270.376	3755666.633
ACO_26	34274.248	3755677.704
ACO_27	34283.971	3755697.029
ACO_28	34297.368	3755671.489
ACO_29	34305.867	3755613.343
ACO_30	34312.960	3755628.773
ACO_31	34303.019	3755604.997
ACO_32	34285.019	3755611.286
ACO_33	34279.536	3755637.549
ACO_34	34274.937	3755618.453
ACO_35	34287.657	3755650.596
ACO_36	34271.609	3755615.716
ACO_37	34263.989	3755649.059
ACO_38	34231.701	3755639.804
ACO_39	34222.919	3755674.304
ACO_40	34216.490	3755626.291
ACO_41	34239.111	3755654.959
ACO_42	34223.224	3755640.479
ACO_43	34263.761	3755628.622
ACO_44	34280.980	3755670.005
ACO_45	34287.867	3755697.626
ACO_46	34419.903	3755648.347
ACO_47	34411.985	3755646.522
ACO_48	34408.660	3755649.964
ACO_49	34427.806	3755612.048
ACO_50	34443.460	3755656.752
ACO_51	34291.189	3755647.092
ACO_52	34233.974	3755629.761
ACO_53	34293.604	3755641.305
ACO_54	34266.380	3755638.374
ACO_55	34263.501	3755621.581
ACO_56	34261.019	3755614.472
ACO_57	34263.947	3755627.492
ACO_58	34179.689	3755616.183
ACO_59	34205.241	3755623.765
ACO_60	34189.590	3755636.652
ACO_61	34180.224	3755610.309
ACO_62	34200.867	3755610.906
ACO_63	34209.580	3755630.044
ACO_64	34315.011	3755654.207
ACO_65	34316.772	3755659.248
ACO_66	34331.428	3755672.618
ACO_67	34348.044	3755667.026
ACO_68	34440.287	3755630.088
ACO_69	34274.827	3755656.078
ACO_70	34222.788	3755679.879
ACO_71	34381.156	3755632.459
ACO_72	34373.151	3755635.938
ACO_73	34379.405	3755630.014
ACO_74	34415.944	3755647.025
ACO_75	34432.382	3755630.684
ACO_76	34435.484	3755633.977
ACO_77	34333.824	3755613.174
ACO_78	34361.290	3755630.474
ACO_79	34364.377	3755635.487
ACO_80	34276.289	3755638.133
ACO_81	34278.738	3755616.259
ACO_82	34174.776	3755632.098
ACO_83	34351.416	3755629.114
ACO_84	34330.607	3755634.287
ACO_85	34324.790	3755638.415
ACO_86	34319.982	3755643.091
ACO_87	34311.875	3755642.927
ACO_88	34427.801	3755630.944
ACO_89	34425.562	3755626.798
ACO_90	34415.885	3755620.528

Name	Y	X
IB_X1_1	CL 59.700	L 59.700
IB_X1_2	CL 59.700	L 59.700
IB_X1_3	CL 59.700	L 59.700
IB_X1_4	CL 59.700	L 59.700
IB_X1_5	CL 59.700	L 59.700
IB_X1_6	CL 59.700	L 59.700
IB_X1_7	CL 59.700	L 59.700
IB_X1_8	CL 59.700	L 59.700
IB_X1_9	CL 59.700	L 59.700
IB_X1_10	CL 59.700	L 59.700
IB_X1_11	CL 59.700	L 59.700
IB_X1_12	CL 59.700	L 59.700
IB_X1_13	CL 59.700	L 59.700
IB_X1_14	CL 59.700	L 59.700
IB_X1_15	CL 59.700	L 59.700
IB_X1_16	CL 59.700	L 59.700
IB_X1_17	CL 59.700	L 59.700
IB_X1_18	CL 59.700	L 59.700
IB_X1_19	CL 59.700	L 59.700
IB_X1_20	CL 59.700	L 59.700
IB_X1_21	CL 59.700	L 59.700
IB_X1_22	CL 59.700	L 59.700
IB_X1_23	CL 59.700	L 59.700
IB_X1_24	CL 59.700	L 59.700
IB_X1_25	CL 59.700	L 59.700
IB_X1_26	CL 59.700	L 59.700
IB_X1_27	CL 59.700	L 59.700
IB_X1_28	CL 59.700	L 59.700
IB_X1_29	CL 59.700	L 59.700
IB_X1_30	CL 59.700	L 59.700
IB_X1_31	CL 59.700	L 59.700
IB_X1_32	CL 59.700	L 59.700
IB_X1_33	CL 59.700	L 59.700
IB_X1_34	CL 59.700	L 59.700
IB_X1_35	CL 59.700	L 59.700
IB_X1_36	CL 59.700	L 59.700
IB_X1_37	CL 59.700	L 59.700
IB_X1_38	CL 59.700	L 59.700
IB_X1_39	CL 59.700	L 59.700
IB_X1_40	CL 59.700	L 59.700
IB_X1_41	CL 59.700	L 59.700
IB_X1_42	CL 59.700	L 59.700
IB_X1_43	CL 59.700	L 59.700
IB_X1_44	CL 59.700	L 59.700
IB_X1_45	CL 59.700	L 59.700
IB_X1_46	CL 59.700	L 59.700
IB_X1_47	CL 59.700	L 59.700
IB_X1_48	CL 59.700	L 59.700
IB_X1_49	CL 59.700	L 59.700
IB_X1_50	CL 59.700	L 59.700
IB_X1_51	CL 59.700	L 59.700
IB_X1_52	CL 59.700	L 59.700
IB_X1_53	CL 59.700	L 59.700
IB_X1_54	CL 59.700	L 59.700
IB_X1_55	CL 59.700	L 59.700
IB_X1_56	CL 59.700	L 59.700
IB_X1_57	CL 59.700	L 59.700
IB_X1_58	CL 59.700	L 59.700
IB_X1_59	CL 59.700	L 59.700
IB_X1_60	CL 59.700	L 59.700
IB_X1_61	CL 59.700	L 59.700
IB_X1_62	CL 59.700	L 59.700
IB_X1_63	CL 59.700	L 59.700
IB_X1_64	CL 59.700	L 59.700
IB_X1_65	CL 59.700	L 59.700
IB_X1_66	CL 59.700	L 59.700
IB_X1_67	CL 59.700	L 59.700
IB_X1_68	CL 59.700	L 59.700
IB_X1_69	CL 59.700	L 59.700
IB_X1_70	CL 59.700	L 59.700
IB_X1_71	CL 59.700	L 59.700
IB_X1_72	CL 59.700	L 59.700
IB_X1_73	CL 59.700	L 59.700
IB_X1_74	CL 59.700	L 59.700
IB_X1_75	CL 59.700	L 59.700
IB_X1_76	CL 59.700	L 59.700
IB_X1_77	CL 59.700	L 59.700
IB_X1_78	CL 59.700	L 59.700
IB_X1_79	CL 59.700	L 59.700
IB_X1_80	CL 59.700	L 59.700
IB_X1_81	CL 59.700	L 59.700
IB_X1_82	CL 59.700	L 59.700
IB_X1_83	CL 59.700	L 59.700
IB_X1_84	CL 59.700	L 59.700
IB_X1_85	CL 59.700	L 59.700
IB_X1_86	CL 59.700	L 59.700
IB_X1_87	CL 59.700	L 59.700
IB_X1_88	CL 59.700	L 59.700
IB_X1_89	CL 59.700	L 59.700
IB_X1_90	CL 59.700	L 59.700
IB_X1_91	CL 59.700	L 59.700
IB_X1_92	CL 59.700	L 59.700
IB_X1_93	CL 59.700	L 59.700
IB_X1_94	CL 59.700	L 59.700
IB_X1_95	CL 59.700	L 59.700
IB_X1_96	CL 59.700	L 59.700
IB_X1_97	CL 59.700	L 59.700
IB_X1_98	CL 59.700	L 59.700
IB_X1_99	CL 59.700	L 59.700
IB_X1_100	CL 59.700	L 59.700



GENERAL NOTES

- ALL WORK TO BE IN ACCORDANCE WITH THE PROJECT SPECIFICATIONS.
- CONTRACTOR TO APPLY AND OBTAIN NECESSARY BEFORE CONSTRUCTION COMMENCE AND MUNICIPAL SERVICES ARE EXPEDITED TO BE CONNECTED TO.
- ALL EXISTING SERVICES IN THE VICINITY OF THE WORKS TO BE EXPOSED, PRIOR TO START OF ANY EXCAVATION IN THE VICINITY OF SERVICES.
- SPECIAL CARE TO BE TAKEN TO AVOID THE TRIPPING OF MAIN WATER, PLANNING THE WORKS PROPERLY, AND BY INSTALLING TEMPORARY CUT-OFF DAMS IF REQUIRED, ETC.
- CUT IN NEW 10MM 1.6MM FLANGED TOP OF GALVANIZED MILD STEEL, 1 PEECE WITH CARBON STEEL WITH PROTECTIVE COATING (3 COATS, MINIMUM 125 MICROMETERS) TO THE MANUFACTURER'S SPECIFICATION AND STAINLESS STEEL BOLTS AND NUTS WITH TEFZON NUMBER 106 TUBING ADAPTING TO CONNECT TO