

**SCREENING REPORT FOR AN ENVIRONMENTAL AUTHORIZATION AS
REQUIRED BY THE 2014 EIA REGULATIONS – PROPOSED DEVELOPMENT
FOOTPRINT ENVIRONMENTAL SENSITIVITY**

EIA Reference number: -

Project name: Cropmax Unauthorised Vegetation Clearing

Project title: Portion 22 of Klipfontein Farm 82

Date screening report generated: 21/05/2025 13:13:24

Applicant: Cropmax Business Trust

Compiler: PHS Consulting

Compiler signature:

.....

Application Category: Transformation of land | Indigenous vegetation

Table of Contents

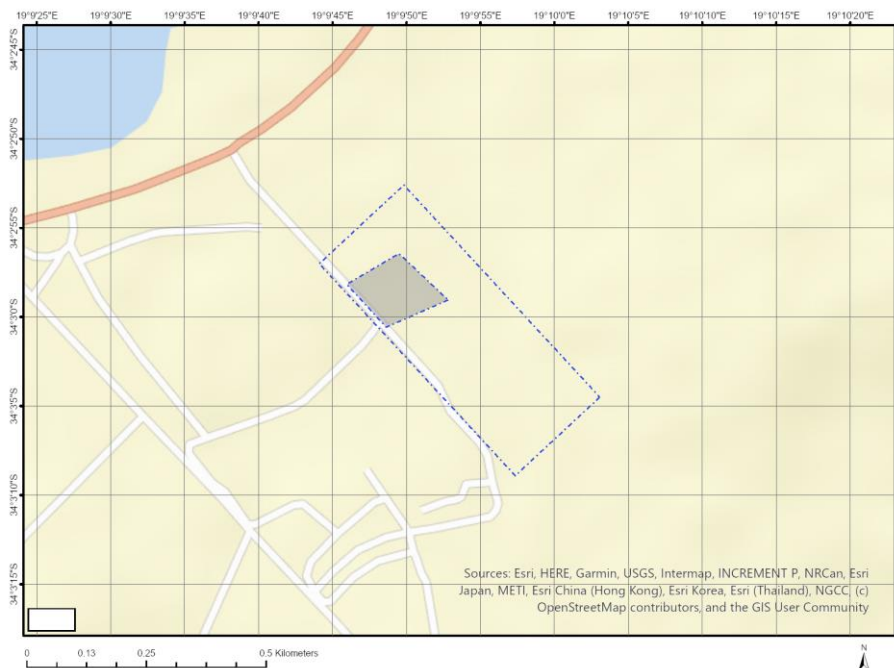
Proposed Project Location	3
Orientation map 1: General location	3
Map of proposed site and relevant area(s)	4
Cadastral details of the proposed site	4
Wind and Solar developments with an approved Environmental Authorisation or applications under consideration within 30 km of the proposed area	4
Environmental Management Frameworks relevant to the application	5
Environmental screening results and assessment outcomes	5
Relevant development incentives, restrictions, exclusions or prohibitions	5
Proposed Development Area Environmental Sensitivity	5
Specialist assessments identified	6
Results of the environmental sensitivity of the proposed area	7
MAP OF RELATIVE AGRICULTURE THEME SENSITIVITY	7
MAP OF RELATIVE ANIMAL SPECIES THEME SENSITIVITY	8
MAP OF RELATIVE AQUATIC BIODIVERSITY THEME SENSITIVITY	9
MAP OF RELATIVE ARCHAEOLOGICAL AND CULTURAL HERITAGE THEME SENSITIVITY	10
MAP OF RELATIVE CIVIL AVIATION THEME SENSITIVITY	11
MAP OF RELATIVE DEFENCE THEME SENSITIVITY	12
MAP OF RELATIVE PALEONTOLOGY THEME SENSITIVITY	13
MAP OF RELATIVE PLANT SPECIES THEME SENSITIVITY	14
MAP OF RELATIVE TERRESTRIAL BIODIVERSITY THEME SENSITIVITY	16

Proposed Project Location

Orientation map 1: General location



Map of proposed site and relevant area(s)



Cadastral details of the proposed site

Property details:

No	Farm Name	Farm/ Erf No	Portion	Latitude	Longitude	Property Type
1	KLIPFONTEIN	82	0	34°2'16.7S	19°9'56.04E	Farm
2	KLIPFONTEIN	82	22	34°3'0.75S	19°9'53.58E	Farm Portion

Development footprint¹ vertices:

Footprint	Latitude	Longitude
1	34°3'0.57S	19°9'48.63E
1	34°2'58.17S	19°9'45.96E
1	34°2'56.44S	19°9'49.49E
1	34°2'59.05S	19°9'52.82E
1	34°3'0.57S	19°9'48.63E

Wind and Solar developments with an approved Environmental Authorisation or applications under consideration within 30 km of the proposed area

No	EIA Reference No	Classification	Status of	Distance from proposed
----	------------------	----------------	-----------	------------------------

¹ “development footprint”, means the area within the site on which the development will take place and includes all ancillary developments for example roads, power lines, boundary walls, paving etc. which require vegetation clearance or which will be disturbed and for which the application has been submitted.

			application	area (km)
1	16/3/3/1/E4/27/1020/21	Solar PV	Approved	1.2
2	12/12/20/1746/1	Wind	Approved	27.4
3	14/12/16/3/3/2/260/AM1	Wind	Approved	19.9
4	12/12/20/1746	Wind	Approved	27.4
5	14/12/16/3/3/2/260	Wind	Approved	19.9
6	12/12/20/1746/AM3	Wind	Approved	27.4

Environmental Management Frameworks relevant to the application

No intersections with EMF areas found.

Environmental screening results and assessment outcomes

The following sections contain a summary of any development incentives, restrictions, exclusions or prohibitions that apply to the proposed development footprint as well as the most environmental sensitive features on the footprint based on the footprint sensitivity screening results for the application classification that was selected. The application classification selected for this report is:

Transformation of land | Indigenous vegetation.

Relevant development incentives, restrictions, exclusions or prohibitions

The following development incentives, restrictions, exclusions or prohibitions and their implications that apply to this footprint are indicated below.

Incentive, restriction or prohibition	Implication
Strategic Gas Pipeline Corridors-Phase 1a & 1b: Saldanha to Ankerlig and Saldanha to Mossel Bay	https://screening.environment.gov.za/ScreeningDownloads/DevelopmentZones/Combined_GAS.pdf
Main Electricity Distribution Substation	https://screening.environment.gov.za/ScreeningDownloads/DevelopmentZones/Distribution_Transmission.pdf

Proposed Development Area Environmental Sensitivity

The following summary of the development footprint environmental sensitivities is identified. Only the highest environmental sensitivity is indicated. The footprint environmental sensitivities for the proposed development footprint as identified, are indicative only and must be verified on site by a suitably qualified person before the specialist assessments identified below can be confirmed.

Theme	Very High sensitivity	High sensitivity	Medium sensitivity	Low sensitivity
Agriculture Theme		X		
Animal Species Theme		X		
Aquatic Biodiversity Theme	X			
Archaeological and Cultural Heritage Theme				X

Civil Aviation Theme				X
Defence Theme				X
Paleontology Theme	X			
Plant Species Theme	X			
Terrestrial Biodiversity Theme	X			

Specialist assessments identified

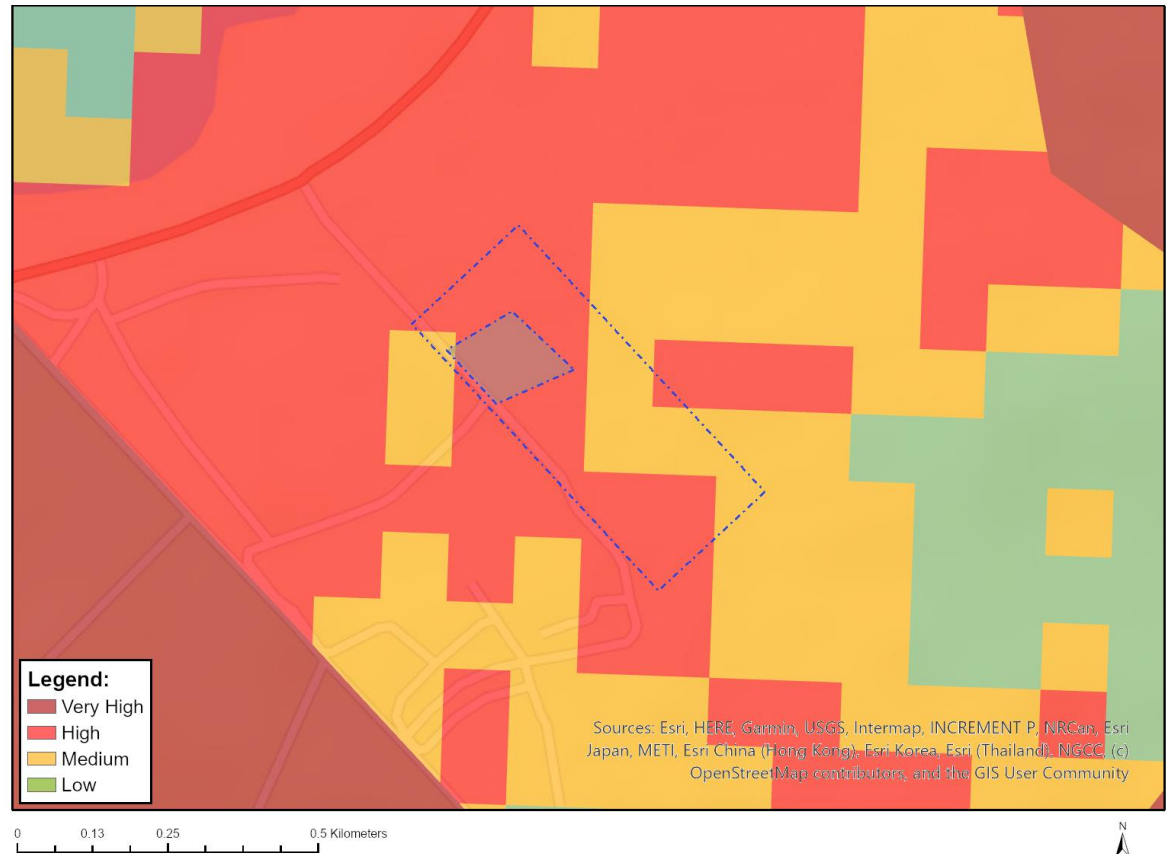
Based on the selected classification, and the known impacts associated with the proposed development, the following list of specialist assessments have been identified for inclusion in the assessment report. It is the responsibility of the EAP to confirm this list and to motivate in the assessment report, the reason for not including any of the identified specialist study including the provision of photographic evidence of the footprint situation.

No	Specialist assessment	Assessment Protocol
1	Landscape/Visual Impact Assessment	https://screening.environment.gov.za/ScreeningDownloads/AssessmentProtocols/Gazetted_General_Requirement_Assessment_Protocols.pdf
2	Archaeological and Cultural Heritage Impact Assessment	https://screening.environment.gov.za/ScreeningDownloads/AssessmentProtocols/GuidanceforHIA.pdf
3	Palaeontology Impact Assessment	https://screening.environment.gov.za/ScreeningDownloads/AssessmentProtocols/GuidanceforPIA.pdf
4	Terrestrial Biodiversity Impact Assessment	https://screening.environment.gov.za/ScreeningDownloads/AssessmentProtocols/Gazetted_Terrestrial_Biodiversity_Assessment_Protocols.pdf
5	Aquatic Biodiversity Impact Assessment	https://screening.environment.gov.za/ScreeningDownloads/AssessmentProtocols/Gazetted_Aquatic_Biodiversity_Assessment_Protocols.pdf
6	Socio-Economic Assessment	https://screening.environment.gov.za/ScreeningDownloads/AssessmentProtocols/Gazetted_General_Requirement_Assessment_Protocols.pdf
7	Plant Species Assessment	https://screening.environment.gov.za/ScreeningDownloads/AssessmentProtocols/Gazetted_Plant_Species_Assessment_Protocols.pdf
8	Animal Species Assessment	https://screening.environment.gov.za/ScreeningDownloads/AssessmentProtocols/Gazetted_Animal_Species_Assessment_Protocols.pdf

Results of the environmental sensitivity of the proposed area.

The following section represents the results of the screening for environmental sensitivity of the proposed footprint for relevant environmental themes associated with the project classification. It is the duty of the EAP to ensure that the environmental themes provided by the screening tool are comprehensive and complete for the project. Refer to the disclaimer.

MAP OF RELATIVE AGRICULTURE THEME SENSITIVITY

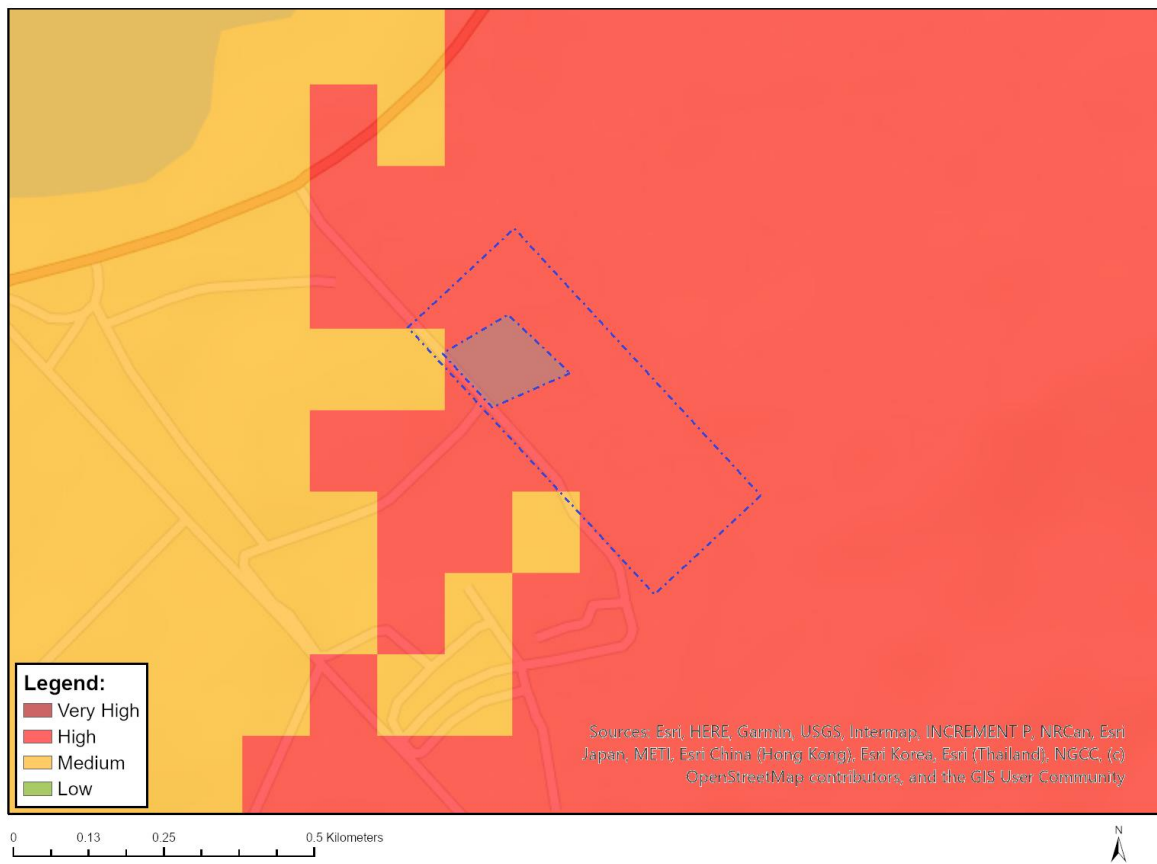


Very High sensitivity	High sensitivity	Medium sensitivity	Low sensitivity
	X		

Sensitivity Features:

Sensitivity	Feature(s)
High	08. Moderate
Medium	07. Low-Moderate

MAP OF RELATIVE ANIMAL SPECIES THEME SENSITIVITY



Where only a sensitive plant unique number or sensitive animal unique number is provided in the screening report and an assessment is required, the environmental assessment practitioner (EAP) or specialist is required to email SANBI at eiadatarequests@sanbi.org.za listing all sensitive species with their unique identifiers for which information is required. The name has been withheld as the species may be prone to illegal harvesting and must be protected. SANBI will release the actual species name after the details of the EAP or specialist have been documented.

Very High sensitivity	High sensitivity	Medium sensitivity	Low sensitivity
	X		

Sensitivity Features:

Sensitivity	Feature(s)
High	Aves-Polemaetus bellicosus
Medium	Aves-Circus ranivorus
Medium	Aves-Circus maurus
Medium	Aves-Neotis denhami
Medium	Aves-Sagittarius serpentarius
Medium	Invertebrate-Conocephalus peringueyi
Medium	Invertebrate-Brinckiella aptera
Medium	Invertebrate-Aneuryphymus montanus

MAP OF RELATIVE AQUATIC BIODIVERSITY THEME SENSITIVITY



Very High sensitivity	High sensitivity	Medium sensitivity	Low sensitivity
X			

Sensitivity Features:

Sensitivity	Feature(s)
Very High	Wetlands_Seep
Very High	SWSA (sw)_Boland

MAP OF RELATIVE ARCHAEOLOGICAL AND CULTURAL HERITAGE THEME SENSITIVITY



Very High sensitivity	High sensitivity	Medium sensitivity	Low sensitivity
			X

Sensitivity Features:

Sensitivity	Feature(s)
Low	Low Sensitivity

MAP OF RELATIVE CIVIL AVIATION THEME SENSITIVITY



Very High sensitivity	High sensitivity	Medium sensitivity	Low sensitivity
			X

Sensitivity Features:

Sensitivity	Feature(s)
Low	Low sensitivity

MAP OF RELATIVE DEFENCE THEME SENSITIVITY



Very High sensitivity	High sensitivity	Medium sensitivity	Low sensitivity
			X

Sensitivity Features:

Sensitivity	Feature(s)
Low	Low Sensitivity

MAP OF RELATIVE PALEONTOLOGY THEME SENSITIVITY



Very High sensitivity	High sensitivity	Medium sensitivity	Low sensitivity
X			

Sensitivity Features:

Sensitivity	Feature(s)
Very High	Features with a Very High paleontological sensitivity

MAP OF RELATIVE PLANT SPECIES THEME SENSITIVITY



Where only a sensitive plant unique number or sensitive animal unique number is provided in the screening report and an assessment is required, the environmental assessment practitioner (EAP) or specialist is required to email SANBI at eiadatarequests@sanbi.org.za listing all sensitive species with their unique identifiers for which information is required. The name has been withheld as the species may be prone to illegal harvesting and must be protected. SANBI will release the actual species name after the details of the EAP or specialist have been documented.

Very High sensitivity	High sensitivity	Medium sensitivity	Low sensitivity
X			

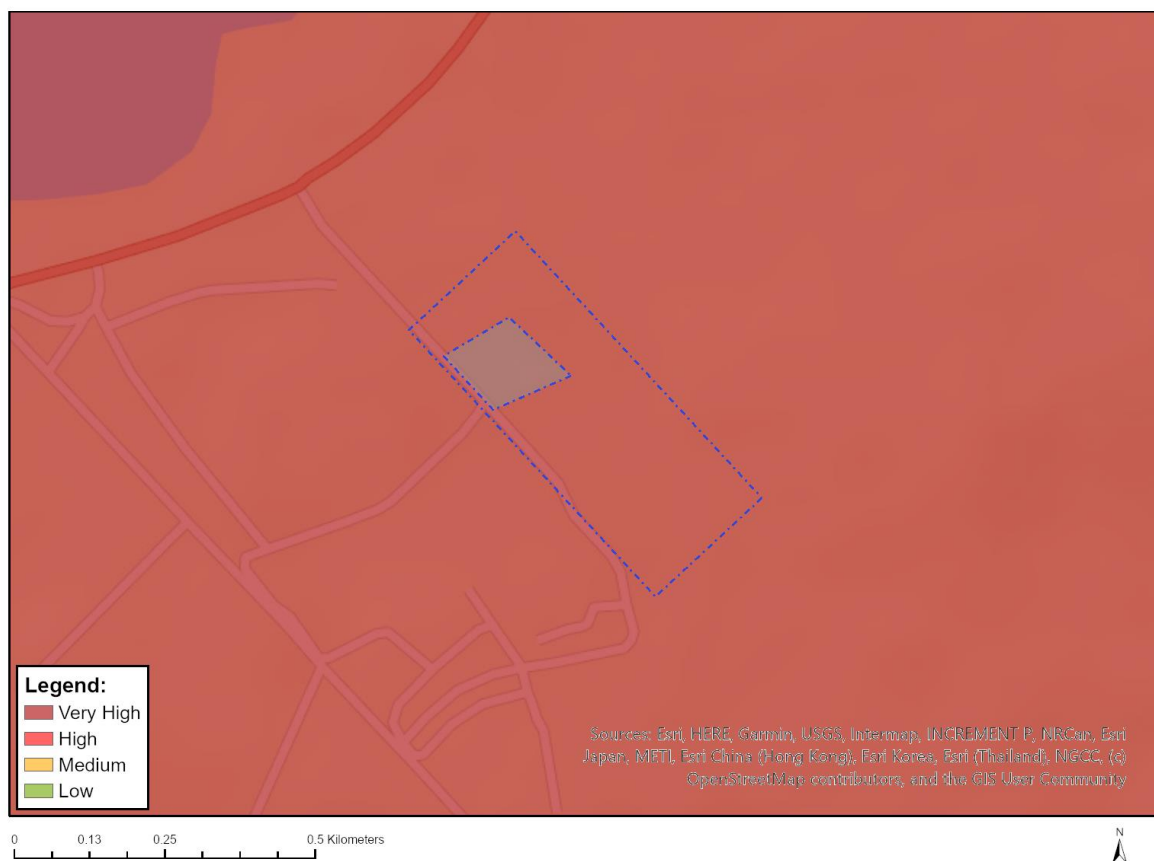
Sensitivity Features:

Sensitivity	Feature(s)
Medium	Lampranthus leptaleon
Medium	Lampranthus spiniformis
Medium	Acrodon subulatus
Medium	Ruschia schollii
Medium	Amphithalea bowiei
Medium	Aspalathus attenuata
Medium	Aspalathus divaricata subsp. gracilior
Medium	Aspalathus globosa
Medium	Aspalathus monosperma
Medium	Otholobium rotundifolium
Medium	Lebeckia grandiflora
Medium	Podalyria cordata
Medium	Berzelia ecklonii

Medium	<i>Sorocephalus clavigerus</i>
Medium	<i>Leucadendron coniferum</i>
Medium	<i>Leucadendron daphnoides</i>
Medium	<i>Leucadendron platyspermum</i>
Medium	<i>Protea burchellii</i>
Medium	<i>Protea lacticolor</i>
Medium	<i>Protea longifolia</i>
Medium	<i>Protea restionifolia</i>
Medium	<i>Protea scorzonifolia</i>
Medium	<i>Protea stokoei</i>
Medium	<i>Paranomus adiantifolius</i>
Medium	<i>Mimetes argenteus</i>
Medium	<i>Mimetes capitulatus</i>
Medium	<i>Spatalla mollis</i>
Medium	<i>Spatalla prolifera</i>
Medium	<i>Serruria inconspicua</i>
Medium	<i>Merciera tenuifolia</i>
Medium	<i>Merciera tetraloba</i>
Medium	<i>Apodytes geldenhuisii</i>
Medium	Sensitive species 794
Medium	<i>Pentameris holciformis</i>
Medium	<i>Ehrharta setacea</i> subsp. <i>uniflora</i>
Medium	<i>Anthospermum ericifolium</i>
Medium	<i>Echiostachys ecklonianus</i>
Medium	<i>Aristea recisa</i>
Medium	<i>Aristea zeyheri</i>
Medium	<i>Aristea cantharophila</i>
Medium	<i>Tritoniopsis elongata</i>
Medium	<i>Geissorhiza cataractarum</i>
Medium	<i>Geissorhiza erosa</i>
Medium	<i>Sparaxis fragrans</i>
Medium	<i>Sparaxis grandiflora</i> subsp. <i>violacea</i>
Medium	<i>Ixia erubescens</i>
Medium	<i>Ixia trinervata</i>
Medium	Sensitive species 650
Medium	Sensitive species 1140
Medium	Sensitive species 44
Medium	Sensitive species 567
Medium	<i>Erica brachysepala</i>
Medium	<i>Erica filiformis</i> var. <i>filiformis</i>
Medium	<i>Erica sacciflora</i>
Medium	<i>Erica squarrosa</i>
Medium	<i>Erica pilosiflora</i> subsp. <i>pilosiflora</i>
Medium	<i>Erica niveniana</i>
Medium	<i>Erica viscaria</i> subsp. <i>gallorum</i>
Medium	<i>Adenogramma rigida</i>
Medium	<i>Centella caespitosa</i>
Medium	<i>Ficinia elatior</i>
Medium	<i>Anthochortus graminifolius</i>
Medium	<i>Ceratocaryum persistens</i>
Medium	<i>Hypodiscus rugosus</i>
Medium	<i>Restio pumilis</i>
Medium	<i>Willdenowia purpurea</i>
Medium	<i>Cephalaria scabra</i>
Medium	Sensitive species 1277
Medium	Sensitive species 384
Medium	<i>Evotella rubiginosa</i>
Medium	<i>Gnidia humilis</i>
Medium	<i>Metalasia plicata</i>
Medium	<i>Polyarrhena reflexa</i> subsp. <i>brachyphylla</i>

Medium	<i>Thaminophyllum multiflorum</i>
Medium	<i>Senecio speciosissimus</i>
Medium	<i>Euchaetis schlechteri</i>
Medium	<i>Muraltia caledonensis</i>
Medium	<i>Wurmbea inusta</i>
Medium	<i>Skiatophytum skiatophytoides</i>
Medium	<i>Xiphotheca reflexa</i>
Medium	<i>Aspalathus lebeckioides</i>
Medium	<i>Aspalathus recurva</i>
Medium	<i>Paranomus bolusii</i>
Medium	<i>Elegia squamosa</i>
Medium	<i>Restio rigoratus</i>
Medium	<i>Pachites bodkinii</i>
Medium	<i>Lachnaea grandiflora</i>
Very High	<i>Leucadendron elimense</i> subsp. <i>vyeboomense</i>

MAP OF RELATIVE TERRESTRIAL BIODIVERSITY THEME SENSITIVITY



Very High sensitivity	High sensitivity	Medium sensitivity	Low sensitivity
X			

Sensitivity Features:

Sensitivity	Feature(s)
Very High	CBA: Terrestrial
Very High	CBA2: Terrestrial

Very High	SWSA (sw)_Boland
Very High	CR_Elgin Shale Fynbos
Very High	CR_Kogelberg Sandstone Fynbos

OFFICIAL