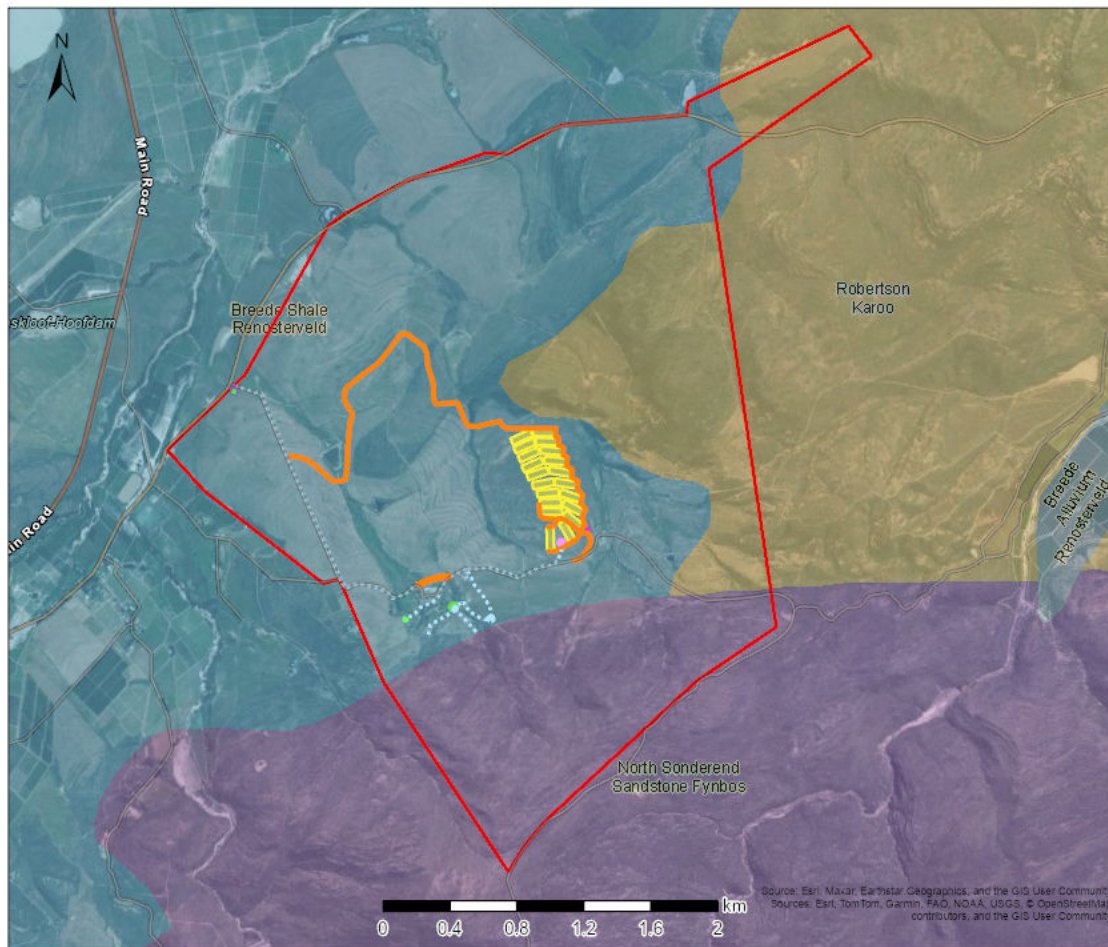


# Kleinfontein Broiler Facility: Vegetation Map



## Legend

### VEGMAP 2024 (beta)

#### Map Code

- FFs13
- FRa1
- FRs8
- SKv7

Map Center: Lon: 19°23'38.8"E  
Lat: 33°54'50.2"S

Scale: 1:36,112

Date created: 2025/07/08



Western Cape  
Government  
FOR YOU

Source: Esri, Maxar, Earthstar Geographics, and the GIS User Community  
Sources: Esri, TomTom, Garmin, FAO, NOAA, USGS, © OpenStreetMap contributors, and the GIS User Community

# Kleinfontein Broiler Facility: CBAs & ESAs



## Legend

Protected Areas

### Ecological Support Areas (Restore)

ESA 2: Restore from other land use

### Ecological Support Areas

ESA 1: Aquatic

### Critical Biodiversity Areas (Degraded)

CBA2: Aquatic

CBA2: Terrestrial

### Critical Biodiversity Areas

CBA: River

CBA: Terrestrial

CBA: Wetland

Map Center: Lon: 19°23'44.6"E  
Lat: 33°54'48.6"S

Scale: 1:36,112

Date created: 2025/07/08

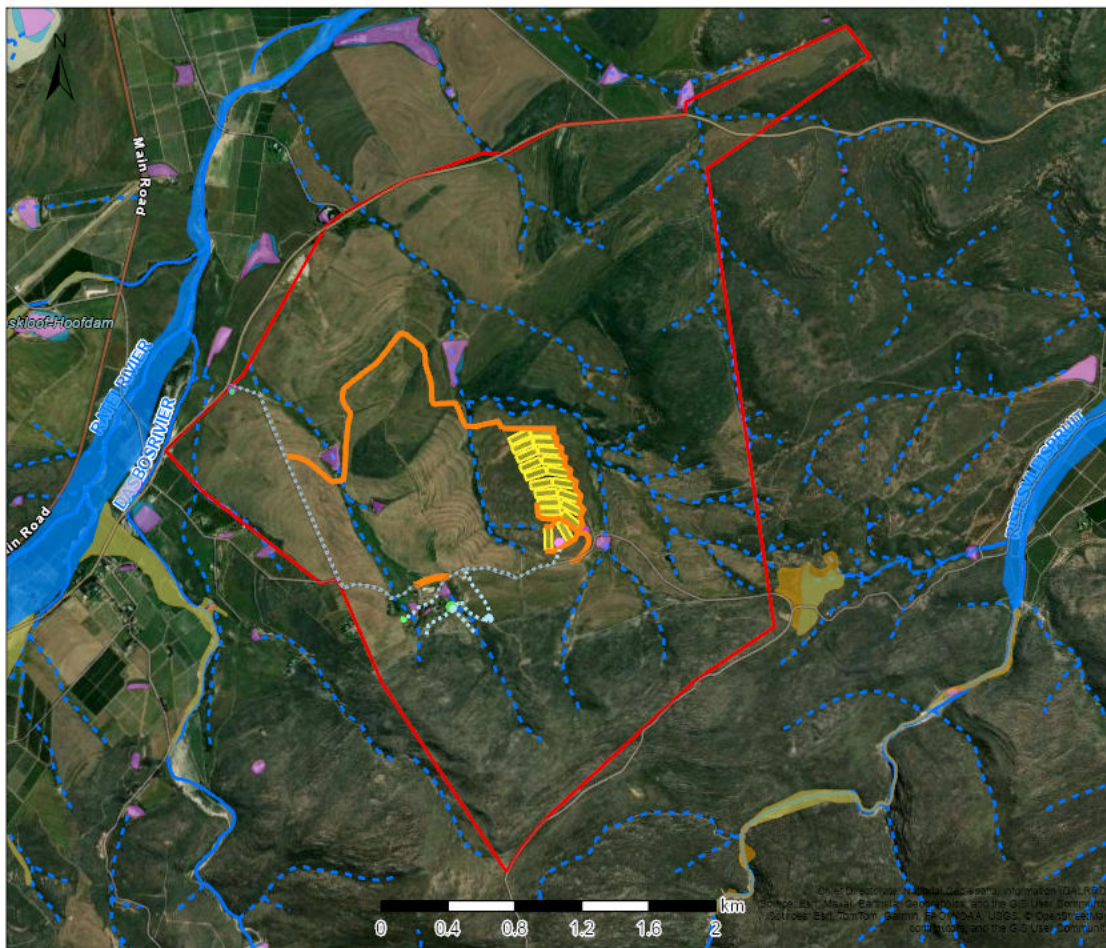


Western Cape  
Government  
FOR YOU

Copyright (c) 2024, 2023 Western Cape Biodiversity Council and  
Government Biodiversity Capabilities, Cape Nature  
Science-Eco-Matrix, Earthwatch, Geoportal, and the GIS User Community  
Sources: Earth, Topo, Geo, and the GIS User Community  
and the GIS User Community



## Kleinfontein Broiler Facility: Aquatic Features



### Legend

#### Wetlands (NWM5)

##### Classification

- Channelled valley-bottom wetland
- Depression wetland
- Seep wetland

#### Wetlands (NFEPA)

- Artificial
- Natural

#### Rivers

- Perennial
- Non-Perennial

Map Center: Lon: 19°23'38.8"E  
Lat: 33°54'50.2"S

Scale: 1:36,112

Date created: 2025/07/08



Western Cape  
Government  
FOR YOU