

## **ANNEXURE 1: CURRICULUM VITAE**

# ***CURRICULUM VITAE of PAUL HENDRIK SLABBERT***

## ***ENVIRONMENTAL & HERITAGE IMPACT PRACTITIONER***

***EAPASA Reg 2020 • Ref: 2019/1036***

### **1. PERSONAL DETAILS**

Born:	23 May 1973
Nationality:	South African
Drivers License:	Code EB
Languages:	Proficient in English and Afrikaans

### **2. KEY COMPETENCIES**

I've completed my BACCALAUREUS ARTIUM ET SCIENTIAE Honors degree at the Potchefstroom University for CHO in 1995. The degree is primarily focused on qualifying Town and Regional Planners, but due to the SCIENTIAE (Science) component it equipped and stimulated my passion for environmental planning. Geography & Environmental studies, Sociology, Statistics and Mathematics in the first year and Geography & Environmental studies, Sociology in the second year formed the bases of my environmental education and interest. Economics up to 3<sup>rd</sup> year level and Statistics, Project Management and Planning Legislation at 4<sup>th</sup> year level provided me with an advance understanding of the development industry. The Town and Regional Planning curriculum from 1<sup>st</sup> to 4<sup>th</sup> year covered the entire spectrum of the built, people, heritage, natural and aesthetic environment in relation to the potential impacts on the socio, economic and bio-physical environment.

I started my Environmental Assessment Practitioner (EAP) career in 1998 as a professional practicing initially in the eco-tourism development industry. My passion for environmental, heritage & land-use planning with associated management strategies enable me to facilitate with all role players to find workable solutions in order to implement sustainable development in Greenfield areas. Due to the ECA (Act No. 73 of 1989) Section 21 Activities identified in 1997/8 the projects I was involved with required authorisation into the ECA. As a result I started to practice as an EAP obtaining authorisations for triggered developments. I gained experience in rural and urban development with the emphasis on environmental impact assessments and management. This enabled me to have various publications in leading eco-tourism magazines. I've been witness to the evolution of the EIA industry from ECA to NEMA up to the current EIA Regulations. I've been operating as a Principal EAP and Environmental Practice owner for over 20 years.

During my career to date I have accumulated experience in the following key areas:

#### **Impact Practitioner & Environmental Planner:**

- Environmental Impact Assessments [legislative & process],
- Heritage & Visual Impact Assessments [legislative & process],
- Mining [legislative & process],

- Environmental Management [environmental control, management plans, Environmental & Social Management Systems],
- Conservation [management strategies, funding & alien vegetation],
- Power Generation [generation, distribution and powerline alignment]
- Land-Use [forward planning, feasibility study, business plan],
- Eco-tourism [trails, birding, recreation, construction, lodging],
- Community [facilitating, public participation, education],
- Water use authorisation [WULA's, GA's pollution prevention management plans and ELU's];
- Waste Management Licences [legislative & process];
- Air Emission Licences [legislative & process],
- Coastal Water Discharge Permits [legislative & process],
- Organizers [events, strategic, project management].

#### **Business & Corporate Reasonability:**

- Information on my Environmental Practice, PHS Consulting please view at [www.phsconsulting.co.za](http://www.phsconsulting.co.za)
- For overview of my social and community engagement programme visit [www.africanvisionfoundation.co.za](http://www.africanvisionfoundation.co.za)

#### **Advanced Legislative Knowledge:**

Providing specialist services and managing and driving projects related to the following legislation:

- National Environmental Management Act (Act No. 107 of 1998) and 2017 Regulations;
- Environmental Conservation Act (Act No. 73 of 1989);
- National Heritage Resources Act (Act No. 25 of 1999);
- Land Use Planning Ordinance (Ordinance 15 of 1985);
- National Environmental Management: Integrated Coastal Management Act (Act No. 24 of 2008);
- National Environmental Management: Waste Act (Act No. 59 of 2008);
- National Environmental Management: Air Quality Act (Act No. 39 of 2004);

- Mineral and Petroleum Resources Development Act (Act No. 28 of 2002);
- National Water Act (Act 36 of 1998);
- National Water Services Act (Act 108 of 1997).

### 3. TERTIARY EDUCATION

#### 3.1 Honors Degree in B Art Et Scien (Planning)

Year/s of study: 1992 – 1995 (received 96/03/04)  
 Institution: University of Potchefstroom (PU for CHO)

Course Modules: Geography and Environmental Studies  
 Industrial Sociology  
 Town & Regional Planning  
 Economics  
 Mathematics  
 Philosophy  
 Sociology  
 Statistics  
 Planning Legislation

Honors Thesis: Sustainable Development of Ikageng Township

### 4. REGISTRATIONS AND AFFILIATIONS

- Certified Member of the Interim Certification Board for Environmental Assessment Practitioners of South Africa – May 2009
- Professional Certified Member of AHAP now the Association of Professional Heritage Practitioners (APHP)
- Professional Member of the International Association for Impact Assessment (IAIA)

### 5. EMPLOYMENT RECORD

#### 4.1 Current

Designation: Self-Employed  
 Principal Environmental Assessment Practitioner  
 Heritage Assessment Practitioner  
 Environmental Planner

Period: 1998 to current

Key responsibilities: Environmental Practice (PHS Consulting) Owner that conduct, manage and review EIA's, Basic Assessments, Coastal Water Discharge Permit, Air Quality Licenses, Waste Management Licenses, Setback Line applications, Water Use Authorizations, General Authorizations, NEMA S24G Applications, Mining Permit and License applications. Authorisation and License compliance audits, EMP's, ECO

work, Social and Labour plan compilations, Alien Eradication Management Plans, Fire Management Plans, Maintenance Management Plans, Wild Life Management Plans. Environmental feasibility planning, event organizing and Corporate Social Investment programmes.

PHS Consulting: As sole Member of the Close Corporation I currently employ two fulltime EAP's namely Amanda Fritz-Whyte and Nadine Duncan. We make use of various freelance EAP's and specialist consultants depending on the project type.

#### 4.2 Pre PHS Consulting

Designation: Employed by OmniPlan  
 Period: 1997 to 1998  
 Key responsibilities: Planning Administration, Town Planning Applications, Constraint Analysis, Layout and Design, Community Presentations.

## 6. COURSE / CONFERENCE PARTICIPATION

#### 5.1 Short courses completed

I attended various DEA&DP, APHP, IAIA, Fynbos & SANBI forum workshops, training programmes and conferences since 1999 to date.

## 7. LIST OF EIA PROJECTS TO DATE

Please note over the years in practice I conducted many projects and it's impossible to list them all. He is a summary of the most relevant EAP projects that illustrate my competence, knowledge and experience.

Major project	Tasks	Employer/client	Responsibility
Namaqualand Casino Development <b>1998</b>	Evaluate and assess various site alternatives for the development of a casino in Namaqualand. Assess bio-physical & socio-economic environments from Garies to Vioolsdrif to Pella inland environments. Assessment of the entire coastal environment from Groenrivier mouth to Alexander bay. Presented preferred site alternative to be included in national bid for license allocations	Namaqualand District Council	Act as researcher, public participation liaison and site assessment consultant
Barolong Archaeological Eco-tourism Assessment <b>1999 - 2000</b>	Investigate the feasibility to develop eco-tourism activities amongst the Barolong Tribe kraal systems on the highlands of the North West Province. After survey and mapping, proposed a feasible site close to Hartebeesfontein (NW). Planned hiking and mountain bike trails system in terms of bio-physical and heritage constraints. Drafted a management plan for trail system and developed the trail system and product. Launched and operated initial phase until handover to landowners.	Hartebeesfontein Farmers Association	Site Analysis, layout development, Heritage Practitioner (HP) and environmental management and ECO work

EIA's on 4x4 trails and overnight huts, <b>2000 - 2001</b>	Completed 3 x EIA's on 4x4 trails in the Du Toit Kloof and Hexriver mountains. Worked according to DECAS guidelines and ECA process at the time.	Private Landowners and conservancies	EAP
Anglo Gold Game Reserves – North West, Gauteng, Free State Provinces <b>2001</b>	Contracted as Environmental Management Officer for Anglo Gold mining group in Vaal Reefs. I drafted EMP's for all three of the Nature Reserves and Interpretation Centres. This was followed by ecotourism master plans to focus on sustainable use of the Reserves. I acted as ECO, for the building projects (Lodges) in the reserves and on most of the adjacent mining areas. Water Management and monitoring of water samples were part of the duties	Anglo Gold Ashanti	ECO, HP and IEM officer
Contracted by Uluntu Environments for trail planning and assessments <b>2002</b>	Status quo assessments on all trails and tracks conditions in the Rhodes Memorial, Devils Peak, Sandy Bay, Buffels Bay, Table Mountain and Cape Point areas of the Cape Peninsula National Park. Proposed rehabilitation plans, construction plans and new routes. Assess potential impact on new and disturbed areas. Construction implementation and ECO.	City of Cape Town, Cape Nature	Planning, Environmental Assessment & ECO
Kronendal Estate Residential Development – Houtbay, <b>2003</b>	Environmental Impact Assessment and EMP's	Dormacorp Pty Ltd & First Plan town and regional Planners	EAP
Community Centre site selection – Pringle Bay <b>2003</b>	Site Analyses in coastal zone, with comprehensive public participation. This was to determine a feasible site form both an environmental and community perspective	Hangklip Kleinmond Municipality	Site Assessor and Public participation Liaison
Mosaic Farm, Walkerbay Fynbos Conservancy, Stanford, Western Cape <b>2003 – 2005</b>	Project and Conservation Management contract, responsible for drafting and implementing a major, building restoration and alien clearance program. Planning and implementing the Walkerbay Fynbos Conservancy Hiking trail alignments and management plans. Responsible for assessing development footprints for overnight camps. Implementation of a fire management plan and action plan.	Hermanus Riviera Estates	Environmental Planner, HP, Implementing Agent and Assessor
Chairman Birdlife Walke Bay <b>2003 - 2005</b>	Established bird club and birding project in the Overberg and the Stanford Bird fair	Birdlife South Africa	Chairman (WB), Event Organiser and Community Liaison
Hoopjiesrivier, Free Range Chicken Farm (Farm 541 Caledon)– Karwyderskraal, <b>2006</b>	Basic Assessment and EMP's	ITAKANE	EAP
Heritage Heights (Portion 81 of the Farm 229) residential	Visual Impact Assessment (VIA) and Heritage Impact Assessment (HIA)	Andre Snyman	VIA and HP

development – VanWyksdorp, <b>2006</b>			
Kleinberg residential and retirement village development (erf 459) – Riviersonderend <b>2007</b>	Basic Assessment, EMP's and Landscape Planning	Jacob du Toit	EAP
Gansbaai Industrial extension (erf 210) – Gansbaai <b>2007</b>	Basic Assessment, EMP's	Overstrand Municipality	EAP
Kleinbaai harbour dredging – Gansbaai <b>2007</b>	Basic Assessment, EMP's	Overstrand Municipality	EAP & ECO
Langeberg Cheese factory (Portion 69 of Farm no.159) – Buffelsjag <b>2008</b>	Basic Assessment, EMP's	Langeberg Kaas Pty Ltd	EAP
Industrial development (erf 931)- Struisbaai <b>2008</b>	Basic Assessment, EMP's, Landscape Planning	Louis Greeff	EAP
Shopping Centre Development – Livingstone Zambia <b>2008</b>	EIA and EMP's	Shoprite Checkers	EAP
Billboard development (erf 35270) – Milnerton <b>2008</b>	Basic Assessment, EMP's	CK Outdoor Advertising Pty Ltd	EAP
Fick's Pool Restuarant – Hermanus <b>2008</b>	Basic Assessment, VIA and HIA	Overstrand Municipality	EAP. VIA & HP Practitioner
Residential Development (erf 1497) – Vermont <b>2009</b>	Basic Assessment, EMP's, Landscape Planning	CRISTATUS INV 85 CC	EAP
Single Dwelling Development (erf 278) – Malgas <b>2009</b>	Basic Assessment, EMP's	PJW Terblanche	EAP & ECO
Petrol Filling Station (erf 1) – Swellendam <b>2009</b>	Scoping, EIA and EMP's	Swellendam Municipality	EAP

Fish Processing Plant – St Helena Bay <b>2009</b>	Basic Assessment, EMP's	West Point Processing Pty Ltd	EAP & ECO
Bloemendal Wine Estate – Durbanville <b>2009</b>	VIA and HIA	Spirito Trade 82 Pty Ltd	VIA & HP Practitioner
Maandagskop and Airport Quarries – Mosselbay and George <b>2009</b>	Environmental Management Programme Reports and Audits	Terblanche Transport	Environmental Auditor
Matroosberg Reserve (Farm 424) Ceres <b>2010</b>	Basic Assessment & EMP's	Erfdeel Boerdery	EAP & ECO
Kleinbaai Harbour Expansion (Erf 423) - Gansbaai <b>2010</b>	Basic Assessment & EMP's	Overstrand Municipality	EAP
Retirement Village Development (Erf 5379 & 5300) – Onrusrivier <b>2010</b>	Basic Assessment, EMP's & ECO	Tweefonteine Ontwikkelings Trust	EAP & ECO
Industrial Development (Erf 2015) – Riversdale <b>2010</b>	Basic Assessment, EMP's & ECO	Hessequa Municipality	EAP & ECO
Residential Development (Erf 987) – De Kelders <b>2011</b>	Basic Assessment & EMP's	Hopefull Trust	EAP
Unlawful Vegetation Removal (Farm 237) - Elim <b>2011</b>	S 24 G & EMP	Moravian Church of Elim	EAP
Graveyard Development – Springbok, Okiep, Bergsig, Matjieskloof, Kommagas, Nababeep – Northern Cape <b>2011</b>	Basic Assessments & EMP's	Nama Khoi Local Municipality	EAP
Residential Development (Erf 8704) – Paarl <b>2011</b>	Basic Assessment & EMP's	Nevensaan Ontwikkelings	EAP
Wetland Rehabilitation – Tesselaarsdal <b>2011</b>	Basic Assessment & EMP's	Department of Agriculture and Tesselaarsdal Action Group	EAP



Mushroom Farm Development (Farm 436/27) – Botrivier <b>2011</b>	Basic Assessment & EMP's Waste Licence	Ocean Mushrooms	EAP & ECO
Blouberg Mine Development (Farm 88 & 91) – Melkbosstrand <b>2012</b>	Visual Impact Assessment	Tip Trans	Visual Assessor
Urban Expansion Residential Estate (Farm 436/5) – Botrivier <b>2012</b>	Scoping, EIA & EMP's	Crimson Properties	EAP
Cemetery Development (Erf 513 – Napier <b>2012</b>	Basic Assessment & EMP's	Cape Agulhas Municipality	EAP
Coastal Sidewalks Development (Erf 462) - Franskraal <b>2012</b>	Basic Assessment & EMP's	Overstrand Municipality	EAP
Riverside Residence Development (Farm 321) – Stanford <b>2012</b>	Basic Assessment & EMP's	Astrodome Investments	EAP
Eco-Village Development (Farm 483/2) - Caledon <b>2012</b>	Basic Assessment & EMP's	Theewaterskloof Municipality	EAP
Botrivier Windfarms – Botrivier <b>2013</b>	Appointed to oppose the development of windfarms outside regional allocated areas as part of the “Wind Rush” period. Scrutinise and evaluate Scoping & EIA Documents on behalf of opposition. Handling of Appeal.	Wildeckrans Wine Estate and Botriver Community	Opposing EAP
Resort Development (Farm 213) – Bonnievale <b>2013</b>	S24 G & EMP's	De Hoek Trust	EAP
Commercial Development – Chililabombwe Zambia <b>2013</b>	EIA	Shoprite Checkers	EAP
Birding Route Development – South Africa <b>2013 to 2016</b>	Environmental Planning to establish and support birding development in all the South African Provinces	E Snell & Co Funder and BirdLife SA and SANPARKs Honorary Rangers	Environmental Planner
Intensive Feed Farm Development (Farm 728/2) – Grabouw <b>2013</b>	Basic Assessment & EMP's	Babel Trading	EAP & ECO

Uilenvlei Private Nature Reserve, resort development – Uilkraalmond <b>2013</b>	Basic Assessment & EMP's	Southern Spirit Properties	Compile & Review EAP
Development of five Cemeteries - Uppington <b>2014</b>	Basic Assessment & EMP's	Khara Hais Local Municipality	EAP & HP
Commercial Development – Mongu Zambia <b>2014</b>	EIA	Shoprite Checkers	EAP
Establish Hartenbos River Water Users Association – Hartenbos <b>2014</b>	Draft Constitution, verify ELU's conduct Public Consultation	Hartenbos River Water Users Association	Water Resource Consulting
Commercial Development Cabinda – Angola <b>2014</b>	EIA	Shoprite Checkers	EAP
Resort Development (Farm 633 & 273) – Swellendam <b>2014</b>	Basic Assessment & EMP's	Bakkelys Drift Properties	EAP
Natures Path Lifestyle Village - Keurboomstrand <b>2015</b>	Heritage Impact Assessment guiding the EIA process towards a more aesthetic SDP	Sharples Environmental	Heritage Impact Assessor (HP)
Hazardous Waste Assessment – Castle Mews Woodstock – <b>2015</b>	Assess hazardous waste contamination in basement of old buildings, establishing the source and report finding the competent authorities. Assist with drafting management actions to clean-up and resolve.	Castle Mews	Waste Assessor
Commercial Development Kuito – Angola <b>2015</b>	EIA	Shoprite Checkers	EAP
Residential Development (Farm 142/14) – Rheeboek <b>2015</b>	Basic Assessment & EMP's	Mercedes Trust	EAP & ECO
Water Act and Use Interpretations for Commercial off grid Systems – Western Cape <b>2015</b>	Site Assessments, Technology Assessment, Legislation Applicability, Interpretation of the Water Act.	Shoprite Checkers	Water Assessor

Coastal Sidewalk and Trail Development – Kleinmond <b>2015</b>	Basic Assessment & EMP's	Overstrand Municipality	Review EAP
Wetland Rehabilitation Plan; Operational Environmental Management Plan and Environmental Liaison Committee – Sun Valley Mall Noordhoek – <b>2015</b>	Rehabilitation Plan, OEMP & ELC	Shoprite Checkers and City of Cape Town	EAP & ECO
Air Emissions Licence (2 Neil Hare Rd) - Atlantis <b>2016</b>	Air Emissions Assessment	Malmesbury Sterilisasie Aanleg	EAP
Kenhardt Solar Power Farms and Power Lines – Northern Cape <b>2016-2018</b>	Appointed to investigate the development of solar farms and powerline distribution lines outside regional allocated areas as part of the “Solar Rush” period. Scrutinise and evaluate Scoping & EIA Documents on behalf of opposition. Handling of Appeal.	Dagab & Rooidam Farms	Analysing EAP
Jetty Development in Protected Area (Farm 480/136) – Stillbaai <b>2016</b>	Basic Assessment & EMP's	Koringfontein Farm	Review EAP
Intensive feed Farm (Farm 226) – Hermanus <b>2016</b>	Basic Assessment & EMP's	Bapchix	Review EAP & ECO
Industrial Development (Erf 1) - Caledon <b>2016</b>	Basic Assessment & EMP's	Theewaterskloof Municipality	EAP
Abalone Farm Development (Farm 421/1) – Doringbaai <b>2016</b>	Basic Assessment & EMP's	Doring Bay Abalone	Review EAP
Stander Mine (Farm 189/83) – Wilderness <b>2016</b>	Basic Assessment & EMP's	Viadro 127	EAP & ECO
ECO Lifestyle Estate & Nature Reserve, Hoek vd Berg (Farm 572) – Hermanus <b>2017</b>	Scoping EIA & EMP's, HIA	Saddle Path Properties	Review EAP, Heritage Assessor and Water Assessor
Abalone Farm Development (Farm	Basic Assessment & EMP's	Jacobsbaai Sea Products	Compile & Review EAP & ECO

108) - Jacobsbaai <b>2017</b>			
Demolition Waste Management – Cape Peninsula <b>2017 ongoing</b>	Waste Management Plans for demolition and redevelopments	Shoprite Checkers	Waste Assessor
Resort Development (406/58) – Slanghoek <b>2017</b>	Basic Assessment & EMP's	Slanghoek Resort	Review EAP & Visual Assessor
Resort Development (Farm 627/1) - Stanford <b>2017</b>	Basic Assessment & EMP's	Philipskop	Review EAP
Intensive Feed Farm (Farm 541/6) – Karwyderskraal <b>2017</b>	Basic Assessment & EMP's	Itakane Trading	Review EAP & ECO
Henkershoek Mine (Farm 628) – Albertinia <b>2017</b>	Basic Assessment & EMP's	Viadro 127	Compile & Review EAP
Heavy Minerals Prospecting (Alexcor Mining Right Area) – Alexanderbaai <b>2018</b>	Basic Assessment & EMP's	Vast Mineral Sands	EAP
Commercial Development Namibe – Angola <b>2018</b>	EIA	Shoprite Checkers	EAP
Resort Development (Farm 465) – Elgin <b>2018</b>	Basic Assessment & EMP's	On The Earth	Review EAP
Residential Development (Erf 1019) - Wilderness <b>2018</b>	Basic Assessment & EMP's	Costa	Compile & Review EAP
Residential Development (Erf 1156) – Witsand <b>2018</b>	Basic Assessment & EMP's	Westfield Trust	EAP & ECO
Van Der Stell Liquor Store – Stellenbosch <b>2019</b>	Heritage Impact Assessment	Shoprite Checkers	HP
Weir and Pipeline Development (Huiskloof River) – Botrivier <b>2019</b>	S24G & EMP's	Erin de Vigne	EAP

Crocodile Diving Facility (Erf 48) – Birkenhead <b>2019</b>	Cape Nature Permitting & EMP	Afrikanos	EAP
Abalone Farm Development (Farm 6/453) – Gouritsrivier <b>2019</b>	Basic Assessment & EMP's	Aqunion	Compile & Review EAP
Heavy Minerals Prospecting (Trans Hex Mining Right Area) – Hondelipbaai <b>2019</b>	Basic Assessment & EMP's	Saxon	EAP
Intensive Chicken Farm (Farm 487) – Caledon <b>2019</b>	Basic Assessment & EMP's	Elgin Free Range Chickens	Review EAP
Agricultural Cultivation (Farm 3/497) – Malgas <b>2019</b>	Scoping, EIA & EMP's	Eksteen Familie Trust	Review EAP
Airport Quarry (Farm 129/208) – George <b>2019</b>	Scoping, EIA & EMP's	Mercedes Trust	Compile & Review EAP
Constantia Emporium Retail Centre - <b>2020</b>	Heritage Interpretation Story & Signage	Shoprite Checkers	HP
Commercial Retail Development – City of Cape Town <b>2017 – 2020</b>	Environmental Management Plans & Environmental Control Officers various projects, Delft, Sun Valley, Constantia, Sitari, Brackenfell, Paarl, Table View and Gordons Bay.	Shoprite Checkers	EMP & ECO
Heavy Mineral Mines – Alexcor Northern Cape <b>2020 – 2021</b>	Environmental Impact Study	Deep Blue Minerals	EAP
Free Range Chicken Farms – <b>2020 – 2021</b>	Environmental Impact Assessment	Elgin Free Range Chickens	EAP
Sitari Retail Centre - <b>2021</b>	Heritage Interpretation Story & Signage	Shoprite Checkers	HP
Cape Winelands Airport – City of Cape Town <b>2021 – 2022</b>	Environmental Impact Study	Cape Winelands Airport	EAP
Hoop Urban Expansion – Overberg <b>2022</b>	Environmental Impact Study Heritage and Visual Impact Study	Hoop Trust	EAP & HIA
Mill Steam – Stellenbosch <b>2022</b>	Heritage Impact Assessment	Shoprite Checkers	HP

Commercial Heritage Development – Paardevelei <b>2022</b>	Heritage Impact Assessment	Shoprite Checkers	HP
---	----------------------------	-------------------	----

CURRICULUM VITAE

**JENNA MAREE THERON**

ENVIRONMENTAL ASSESSMENT PRACTITIONER

EAPASA Reg no: 2022/5926

**PERSONAL PROFILE**

---

Gender: Female

Date of Birth: 4 October 1984

Nationality: South African

Languages: Proficient in English and Afrikaans

**KEY COMPETANCIES**

---

I completed my Bachelor's degree (International Studies) focusing on Political Science, History and Sociology in 2005 and my Master's degree (Cultural Tourism and Heritage Studies) at the University of Stellenbosch in 2007. My Master's degree was undertaken predominately through the Department of History and the Department of Geography & Environmental Studies. In 2008 I was accepted into the City of Cape Town's Environmental Resource Management Departments Internship Program for a 12-month period. My internship was invaluable to my career as it equipped me with the practical skills and knowledge behind environmental planning. I received a certificate of commendation for 'Outstanding contribution to the Environmental Internship Programme 2008'. I officially started my EAP career in 2009 as a professional Environmental Consultant within the Private Sector and resign from Doug Jeffery Environmental Consultants as a Senior Environmental Consultant in 2016 to pursue a freelance career as an Environmental Consultant. I have gained experience in rural and urban development with the emphasis on environmental impact assessment and management within South Africa, operating as an EAP for over 15 years.

During my career to date, I have accumulated experience in the following key areas:

- Environmental Impact Assessments [legislative & process],
  - Environmental Management [environmental control, management plans, Environmental Management Systems],
  - Community [facilitating, public participation];
  - Waste Management Licenses [legislative & process];
  - Air Emission Licenses [legislative & process],
  - Coastal Water Discharge Permits [legislative & process],
  - Section 34 Heritage Permits,
  - Organizers [project management].
-

Advanced Legislative Knowledge in:

- National Environmental Management Act (Act No. 107 of 1998) and 2017 EIA Regulations;
- National Heritage Resources Act (Act No. 25 of 1999);
- Land Use Planning Ordinance (Ordinance 15 of 1985);
- National Environmental Management: Integrated Coastal Management Act (Act No. 24 of 2008);
- National Environmental Management: Waste Act (Act No. 59 of 2008);
- National Environmental Management: Air Quality Act (Act No. 39 of 2004); and
- National Water Act (Act 36 of 1998).

## **EDUCATION**

---

### **2006-2007      Tertiary education (Cum Laude)**

Stellenbosch University

Masters in Philosophy (MPhil), Cultural Tourism and Heritage Studies (2 Years)

### **2003-2005      Tertiary education**

Stellenbosch University

Bachelor of Arts (BA), International Studies (3 Years)

## **EMPLOYMENT RECORD**

---

### **OVER 17 YEARS EXPERIENCE IN EIA'S**

Freelance Environmental Consultant (2017 - present)

*Senior Environmental Assessment Practitioner*

- Training and experience in applying the principles of Integrated Environmental Management (IEM), and in applying the Environmental Impact Assessment (EIA) Regulations to a number of development projects and initiatives in South Africa that trigger the National Environmental Management Act.
- Facilitation, co-ordination, management and monitoring of all aspects of the EIA process.
- Liaising with specialists and all members of the project team to ensure a full understanding of the scope of work required throughout the process;
- The compilation of reports: Applicability Applications, Constraints Analysis, Basic Assessment Reports, Scoping and Environmental Impact Assessment Reports, Damage Assessment Reports (24G Applications), Rehabilitation Plans, Audit Reports and Environmental Management Programmes;
- Liaising with interested and affected parties and facilitating the public participation process required in terms of the EIA Regulations; and
- The compilation of Section 34 Heritage Applications including the liaising with the public and heritage authorities.



Doug Jeffery Environmental Consultants (2009 - 2016)

*Senior Environmental Assessment Practitioner*

- Training and experience in applying the principles of Integrated Environmental Management (IEM), and in applying the Environmental Impact Assessment (EIA) Regulations to a number of development projects and initiatives in South Africa that trigger the National Environmental Management, the National Environmental Management: Waste Act etc..
- Facilitation, co-ordination, management and monitoring of all aspects of the EIA process.
- Liaising with specialists and all members of the project team to ensure a full understanding of the scope of work required throughout the process;
- The compilation of reports: Constraints Analysis, Basic Assessment Reports, Scoping and Environmental Impact Assessment Reports, and Damage Assessment Reports (24G Applications) etc.;
- Liaising with interested and affected parties and facilitating the public participation process required in terms of the EIA Regulations.

City of Cape Town: Environmental & Heritage Resource Management

*Internship (2008)*

- Read, assess and comment on EIA, EMP, OEMP, CEMP, and Basic Assessments as per NEMA.
- Read, assess and comment on land-use planning applications, mining applications and heritage applications.
- Process signage applications.
- Assess and prepare approvals for landscaping plans.
- Compliance monitoring.
- Undertake site visits and write reports.
- Attend meetings and take minutes.
- Liaise with ECO's.
- Filling and administrative tasks.
- Assist members of the public with general environmental, heritage and signage queries.

**PROFESSIONAL AFFILIATION:**

---

Member of IAIA (International Association for Impact Assessment)

Member of Association of Professional Heritage Practitioners – Western Cape (APHP)

Professional Member of EAPASA - EAPASA Reg no: 2022/5926

**COURSE CONFERENCE PARTICIPATION:**

---

I attended various DEA&DP & IAIA forum workshops, training programmes and conferences since 2008 to date.

**PROJECT RECORD TO DATE:**

COMPLETION DATE	PROJECT DESCRIPTION	TYPE	APPLICANT:	ROLE:
1 NOVEMBER 2023	THE "CARPENTERS WORKSHOP" ON ERF 18792, SOMERSET WEST	Section 34, NHRA	SHOPRITE CHECKERS (PTY) LTD	Main Author & Researcher of Heritage Statement. Assisted & reviewed by Paul Slabbert Liaised with Authorities & IA&Ps and conducted PPP
29 AUGUST 2023	THE "LOCOMOTIVE SHED" ON ERF 18792, SOMERSET WEST	Section 34, NHRA	SHOPRITE CHECKERS (PTY) LTD	
3 APRIL 2023	ERF 12257, HERMANUS (4 SEA ROAD, "THE KEEP")	Section 34, NHRA & NEMA Applicability Checklist	SERAF DEVELOPMENT 1 (PTY) LTD.	
1 AUGUST 2023	EXPANSION OF THE EXISTING SHOPRITE CHECKERS DISTRIBUTION CENTRE SITUATED ON ERF 8741 WELLS ESTATE, EASTERN CAPE PROVINCE.	AMMENDED EA	EQUITIES PROPERTY FUND LIMITED	<u>Principle EAP:</u> Main Author of all reports (reviewed by Paul Slabbert) Liaised with Authorities, Organs of State, Public Consultation and Specialists Conducted PPP
End 2022	THE WEST POINT PROCESSORS FISH PROCESSING PLANT ERF 1097/3, ST HELENA BAY.	ANNUAL AUDIT REPORT	WEST POINT PROCESSORS	
AUGUST 2022	THE MATROOSBERG 4x4 TRAIL ON THE REMAINDER OF FARM 424 (CERES), PORTION 3 OF FARM 356 (CERES), FARM 355 (CERES), FARM 40 (WOCESTER) & THE REMAINDER OF FARM 57 (WOCESTER), WESTERN CAPE	EMP (OPERATIONAL PHASE)	MATROOSBERG RESERVAAT CC	
OCTOBER 2022	THE PROPOSED EXPANSION/ UPGRADING OF THREE DAMS AND ASSOCIATED INFRASTRUCTURE FOR THE PURPOSES OF ESTABLISHING ORCHARDS AS WELL AS THE CONSTRUCTION OF AN AIRSTRIP, HANGAR AND JETTY ON PORTION 4 OF FARM	BAR/EMP	FULELA TRADE AND INVEST 68 CC.	

	NO. 493 (INHOEK FARM), SWELLENDAM			
NOVEMBER 2022	THE PROPOSED REVERSE OSMOSIS (RO) PLANT AT THE WEST POINT FISH MEAL PROCESSING PLANT, ON ERF 1097, ST HELENA BAY, WESTERN CAPE	BAR/ EMP/ CWDP	WEST POINT PROCESSORS	
MAY 2022, amended AUG 23	REMOVAL OF VEGETATION ON PORTION 3 OF FARM JONKERSRUST, NO. 548, SWELLENDAM	REHAB PLAN	BLOMDAL PLASE PTY LTD	<u>Principle EAP:</u> Main Author of all reports (reviewed by Paul Slabbert) Liaised with Authorities, Organs of State, Public Consultation and Specialists Conducted PPP
APRIL 2022	CAMP SITE ON PORTION 3 OF FARM MICHELS KRAAL NO. 457, SWELLENDAM	REHAB PLAN	KOESANIE TRUST	
27/07/2022	THE PROPOSED EXPANSION OF WEST POINT PROCESSORS, ON ERF 1097, ST HELENA BAY, WESTERN CAPE.	BAR/ EMP/ AEL/ CWDP	WEST POINT PROCESSORS	
End 2021	THE WEST POINT PROCESSORS FISH PROCESSING PLANT ERF 1097/3, ST HELENA BAY.	ANNUAL AUDIT REPORT	WEST POINT PROCESSORS	
NOVEMBER 2020	REMAINDER OF FARM (HOEK VAN DE BERG) NO. 572, HERMANUS: LANDING STRIP REHABILITATION PLAN	AUDIT REPORT	UVA PROPERTIES (PTY) LTD	
AUGUST 2020	THE WEST POINT PROCESSORS FISH PROCESSING PLANT ERF 1097/3, ST HELENA BAY.	CONTINGENCY PLAN	WEST POINT PROCESSORS	
End 2020	THE WEST POINT PROCESSORS FISH PROCESSING PLANT ERF 1097/3, ST HELENA BAY.	ANNUAL AUDIT REPORT	WEST POINT PROCESSORS	
25/11/2019	THE WEST POINT PROCESSORS FISH PROCESSING PLANT ERF 1097/3, ST HELENA BAY.	EXTERNAL AUDIT REPORT	WEST POINT PROCESSORS	<u>Principle EAP:</u> Independent Auditor
22/11/2019	THE PROPOSED CULTIVATION OF LAND ON PORTION 3 OF FARM MELK HOUTE BOSCH NO. 497, SWELLENDAM, WESTERN CAPE	EIA/EMP	JOHANNES EKSTEEN FAMILIETRUST	<u>Principle EAP:</u> Main Author of all reports

14/11/2019	THE UNLAWFUL CONSTRUCTION OF A PIPELINE AND A WEIR IN THE HUISKLOOF RIVER (BOTRIVIER)	24G/EMP	ERIN DE VIGNE (PTY) LTD.	(reviewed by Paul Slabbert)
16/01/2017	THE CONSTRUCTION OF A COMMERCIAL SHOPPING CENTRE ON PORTION 6 OF FARM BARDALE NO.451 AND PORTION 6 OF FARM AMSTERDAM NO 949, BLUE DOWNS	AMENDMENT	SHOPRITE CHECKERS PROPERTIES (PTY) LTD.	Liaised with Authorities, Organs of State, Public Consultation and Specialists
22/11/2016	THE PROPOSED CONSTRUCTION OF A JETTY, ON PORTION 136 OF FARM 480, MELKHOUTFONTEIN (RIVERSDAL).	BAR/ EMP	FARM KONINGSFONTEIN (PTY) LTD.	Conducted PPP
22/08/2016	THE PROPOSED DEVELOPMENT OF AN ADDITIONAL RESERVOIR ON A PORTION OF PORTION 1 OF FARM NO. 888 (LA PARRISSA), PAARL (15/44)	BAR	DRAKENSTEIN MUNICIPALITY	<u>Principle EAP:</u>
20/07/2015	THE PROPOSED CONSTRUCTION OF A RESIDENTIAL DEVELOPMENT ON PORTIONS 9 AND 17 OF THE FARM NO. 681, FIRGROVE	BAR	JANIGENIX (PTY) LTD	Main Author of all reports (reviewed by Paul Slabbert)
30/04/2015	THE PROPOSED DEMOLISHMENT OF THE EXISTING DWELLING AND THE CONSTRUCTION OF A NEW DWELLING ON ERF 46, CASTLE ROCK (14/39)	SBL	MR ROY JAMES GILES	Liaised with Authorities, Organs of State, Public Consultation and Specialists
06/06/2016	THE PROPOSED RESIDENTIAL ESTATE ON PORTIONS 3, 9 & 14 OF FARM NO. 654, CROYDON, STELLENBOSCH	BAR	JV WILNET (PTY) LTD	Conducted PPP
08/09/2014	THE PROPOSED FLAT SIGNAGE TO BE ERECTED ON THE FAÇADE OF BUILDINGS AND AN ENTRANCE WALL LOCATED ON PORTION 477 OF FARM NO 728 JOOSTENBERG VLAKTE 14/35	SIGNAGE APP	LOUGOT PROPERTY INVESTMENTS (PTY) LTD.	<u>Principle EAP</u> compilation & submission of application.

22/03/2016	THE UNLAWFUL CONSTRUCTION OF FACILITIES FOR THE CONCENTRATION OF ANIMALS FOR THE PURPOSE OF COMMERCIAL PRODUCTION (FEEDLOTS) ON PORTION 3 & 8 OF FARM 128 (OSDAM FARM), PIKETBERG 14/27	24G	OSDAM BOERDERY (PTY) LTD.	<u>Principle EAP:</u> Main Author of all reports (reviewed by Doug Jeffery) Liaised with Authorities, Organs of State, Public Consultation and Specialists Conducted PPP
01/12/2015	THE PROPOSED RESIDENTIAL FARMING VILLAGE ON A PORTION OF FARM 1793, SIMONDIUM, PAARL (14/42)	BAR	NIEUWE SION (PTY) LTD.	
30/10/2014	THE UNLAWFUL DECOMMISSIONING OF A SERVICE STATION ON ERF 37366, OMURAMBA DRIVE, MONTAGUE GARDENS.	24G	VAIDRO 184 CC C/O JAN DE MUNCK INC.	
28/01/2015	THE PROPOSED UPGRADE OF MAIN ROAD 281 (DRAAIBERG), VILLIERSDORP (14/14).	BAR	PROVINCIAL GOVERNMENT WESTERN CAPE: DEPARTMENT OF TRANSPORT AND PUBLIC WORKS	
10/11/2015	THE PROPOSED INSTALLATION OF A PEDESTRIAN FOOTBRIDGE AND ASSOCIATED INFRASTRUCTURE OVER THE VYGEKRAAL RIVER ON ERF 32604 LOCATED BETWEEN KEWTOWN AND BRIDGETOWN	BAR	CITY OF CAPE TOWN TRANSPORT PLANNING DEPARTMENT	
11/08/15	THE UNLAWFUL EXPANSION OF TOURIST FACILITIES AND THE CONSTRUCTION OF INFRASTRUCTURE ON PORTION 26 OF FARM NO. 1041, FRANSCHHOEK 14/01.	24G	LA MOTTE WINE ESTATE (PTY) LTD.	
29/04/2014	THE PROPOSED FORMALISATION OF THE STORMWATER DRAINAGE LINE AT KM 1.6 OFF THE KLAASVOOGDS WES ROAD (DR 01368), ROBERTSON 13/35.	BAR	CAPE WINELANDS DISTRICT MUNICIPALITY	
24/01/2014	THE PROPOSED ADDITIONS TO THE EXISTING DWELLING, ERF	SBL	MR. GEORGE P	<u>Principle EAP:</u>

	5599, BETTY'S BAY		DALL	Main Author of all reports (reviewed by Doug Jeffery) Liaised with Authorities, Organs of State, Public Consultation and Specialists Conducted PPP
07/01/2014	THE PROPOSED ALTERATIONS AND ADDITIONS TO THE EXISTING BUNGALOW ON ERF 490, THE RIDGE, CLIFTON.	SBL	MR.& MS. C. WIESE	
10/12/2014	THE PROPOSED CONSTRUCTION OF A WASTE RECYCLING FACILITY ON PORTION 660 OF FARM NO. 454, WIMBLEDON ESTATE, BLACKHEATH.	BAR	RE-ETHICAL ENVIRONMENTAL RE-ENGINEERING (KZN) (PTY) LTD.	
04/03/2014	THE PROPOSED DEMOLITION OF AN EXISTING DWELLING AND CONSTRUCTION OF A SINGLE RESIDENTIAL DWELLING AND ASSOCIATED INFRASTRUCTURE ON ERF 45, BANTRY BAY.	SBL	MR.S. B. UPPINK	
30/03/2016	THE PROPOSED DEVELOPMENT OF AN ADDITIONAL DWELLING ON PORTION 99 OF FARM 559 SKILPADVLEI, PRINGLE BAY 13/02	BAR	SKILPADVLEI FARM (PTY) LTD.	
14/11/2014	UNLAWFUL CONSTRUCTION OF A TRACK FOR THE TESTING AND RECREATIONAL USE OF MOTOR POWERED VEHICLES ON THE REMAINDER OF FARM 1610, FRANSCHHOEK (13/23)	24G	L'ORMARINS (PTY) LTD.	
19/03/2015	THE UNLAWFUL CONSTRUCTION OF A SLAGMENT PLANT AND A CEMENT BLENDING PLANT ON PORTION 656, 664 AND 665 OF FARM WIMBLEDON NO. 454, BLACKHEATH	24G	MR WILLIE SCHEEPERS	
10/10/2014	THE PROPOSED ESTABLISHMENT OF THE SITARI LIFESTYLE ESTATE ON ERF 1840, CROYDON IN THE HELDERBERG.	EIA/ AMENDMENT	SITARI COUNTRY ESTATE (PTY) LTD	<u>Principle EAP:</u> Main Author of all reports (reviewed by Doug Jeffery) Liaised with
10/06/2014	THE UNLAWFUL COMMENCEMENT OF A LISTED ACTIVITY: THE INFILLING OF A WETLAND ON PORTION 10 OF FARM 654, CROYDON, STELLENBOSCH	24G	JV WILNET (PTY) LTD	
28/11/2014	THE UNLAWFUL COMMENCEMENT OF A LISTED ACTIVITY: DISPOSAL OF WASTE TO LAND ON PORTION 14 OF FARM 654, CROYDON, STELLENBOSCH	24G	JV WILNET (PTY) LTD	

11/11/2014	THE PROPOSED DEMOLITION OF THE EXISTING RESIDENTIAL DWELLING AND ASSOCIATED INFRASTRUCTURE AND THE CONSTRUCTION OF A NEW RESIDENTIAL DWELLING AND ASSOCIATED INFRASTRUCTURE ON ERF 2595, GLEN BEACH, CAMPS BAY.	SBL	MR N. M. PHILLIPS	Authorities, Organs of State, Public Consultation and Specialists Conducted PPP
03/06/2013	THE ESTABLISHMENT OF THE HERITAGE PARK RETIREMENT VILLAGE ON A PORTION OF THE FARM ONVERWACHT NO. 811 AND A PORTION OF THE FARM DIE BOS NO. 810, SOMERSET WEST (AN 231 /25/4 FARM 810 AND 811, SOMERSET WEST)	AMENDMENT	MR. S. H. EHLERS	
22/10/2012	THE PROPOSED FLAT 'LETTER' SIGN TO BE ERECTED ON THE FAÇADE OF A BUILDING LOCATED ON ERF 160462, RIEBEEK STREET, CAPE TOWN CBD.	SIGNAGE APP	ATTERBURY INVESTMENTS HOLDINGS LTD	<u>Principle EAP</u> compilation & submission of application.
18/01/2013	THE PROPOSED NEW SINGLE RESIDENTIAL DWELLING ON ERF 27, CASTLE ROCK, SIMON'S TOWN	BAR	MR AND MRS HUGH AND JENNIFER HERMAN	<u>Principle EAP:</u> Main Author of all reports (reviewed by Doug Jeffery) Liaised with Authorities, Organs of State, Public Consultation and Specialists Conducted PPP
23/11/2012	THE PROPOSED UPGRADING OF THE R304 (KOELLENHOF ROAD), STELLENBOSCH.	BAR	STELLENBOSCH MUNICIPALITY	
25/09/2014	THE UNLAWFUL RECONSTRUCTION AND EXPANSION OF AN IN-STREAM DAM ON PORTION 15 OF FARM NO. 1646, TWO RIVERS FARM, FRANSCHOEK	24G	TWO RIVERS FARMS AND GARDENS (PTY) LTD	
19/08/2013	THE PROPOSED UPGRADING OF THE MEDIUM VOLTAGE DISTRIBUTION NETWORK BETWEEN CLOVELL Y AND SIMONSTOWN	BAR	CITY OF CAPE TOWN: ELECTRICITY DIRECTORATE	
16/01/2013	THE PROPOSED GREEN TECHNOLOGY MANUFACTURING CLUSTER INDUSTRIAL DEVELOPMENT AND ASSOCIATED INFRASTRUCTURE ON PORTION 4 AND PORTION 1 OF FARM 1183, ATLANTIS.	BAR	CITY OF CAPE TOWN	

16/01/2013	THE PROPOSED GREEN TECHNOLOGY MANUFACTURING CLUSTER INDUSTRIAL DEVELOPMENT AND ASSOCIATED INFRASTRUCTURE ON PORTION O OF FARM CA1183 AND PORTION 93 OF FARM CA4, ATLANTIS.	BAR	CITY OF CAPE TOWN	
26/09/2014	THE UNLAWFUL COMMENCEMENT OF A LISTED ACTIVITY: DREDGING OF A CHANNEL IN THE KLEIN RIVER ESTUARY, CONSTRUCTION OF A WALKWAY AND THE PROPOSED CONSTRUCTION OF A JETTY ON PORTION 1 OF FARM NO. 723, WORTELGAT, HERMANUS	24G	HERMANUS RIVIERA ESTATES CC TRADING AS MOSAIC PRIVATE SANCTUARY	
28/05/2012	THE PROPOSED FLAT SIGN TO BE ERECTED ON THE FAÇADE OF A BUILDING LOCATED ON ERF 3316, VICTORIA STREET, SOMERSET WEST.	SIGNAGE APP	BEAV INVESTMENT HOLDINGS	
08/02/2012	THE PROPOSED FLAT SIGN TO BE ERECTED ON THE FAÇADE OF A BUILDING LOCATED ON ERF 12715, PHILLIPI.	SIGNAGE APP	CASHBUILD	<u>Principle EAP</u> compilation & submission of application.
20/02/2012	THE PROPOSED CHICKEN HOUSES ON THE REMAINDER OF FARM NO. 403, TULBAGH DIVISION AND FARM NO. 201/3, PAARL DIVISION.	NID	KLEIN VALLEI (PTY) LTD	
19/06/2012	THE THEMBOKEZI RESIDENTIAL DEVELOPMENT ON ERF NO. 51097, KHAYELITSHA, CAPE TOWN.	AMENDMENT	OLD MUTUAL PROPERTY (PTY) LTD	<u>Principle EAP:</u> assisted by Doug Jeffery Main Author of all reports (reviewed by Doug Jeffery) Liaised with Authorities,
12/04/2011 07/03/2014	THE PROPOSED RESIDENTIAL DEVELOPMENT ON ERF 4694 (MILKWOOD RISE), KOMMETJIE.	AMENDMENT	THE KOMMETJIE ESTATES (PTY) LTD	
25/11/2014	THE PROPOSED ESTABLISHMENT OF RESIDENTIAL ERVEN ON THE REMAINDER OF FARM NO. 948, KOMMETJIE	BAR	THE KOMMETJIE ESTATES LIMITED	
12/07/2013	PROPOSED UPGRADE AND EXTENSION OF THE WELLINGTON WASTEWATER TREATMENT WORKS.	EIA	DRAKENSTEIN MUNICIPALITY	
30/03/2011	CULTIVATION OF VIRGIN SOIL ON PORTIONS 11 AND 21 OF	BAR	SPRINGFIELD	



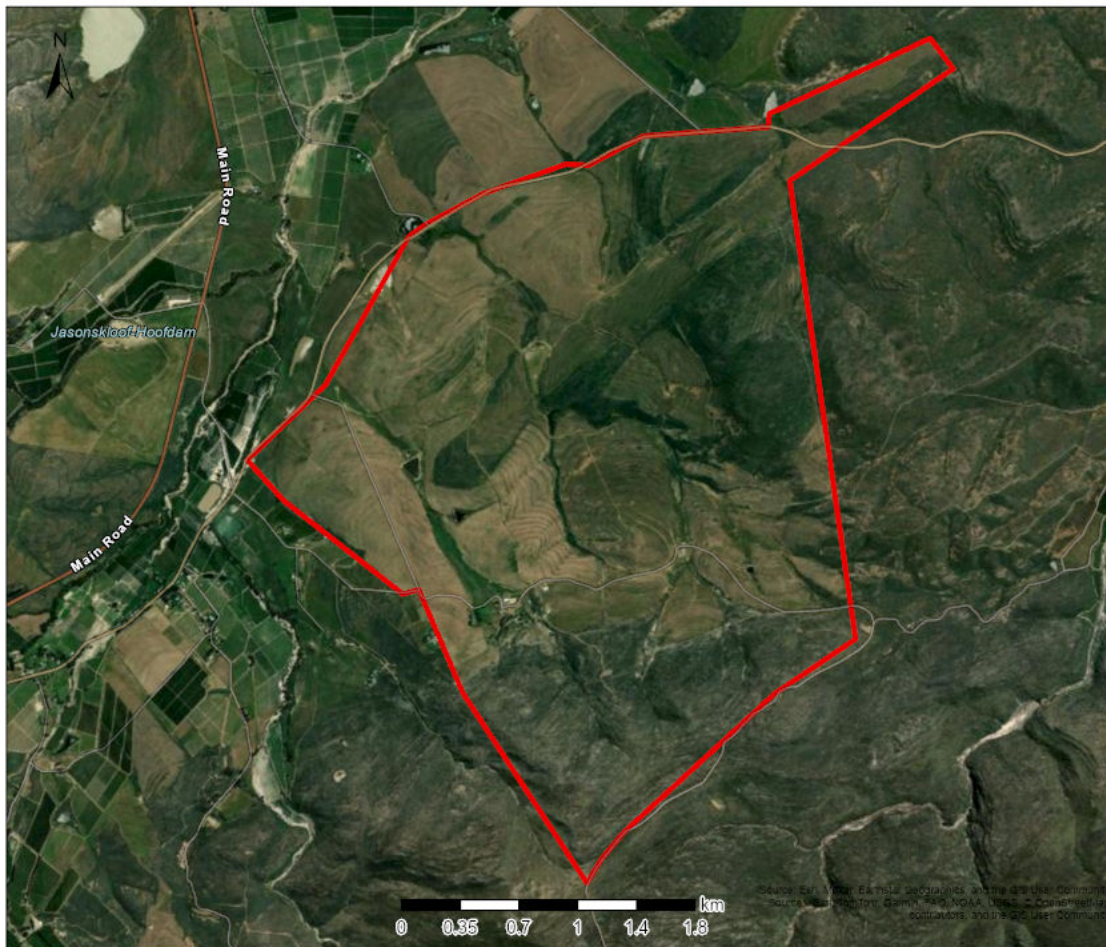
	FARM NO. 11.2, SPRINGFIELD ESTATE, ROBERTSON		ESTATE VINEYARDS (PTY) LTD	Organs of State, Public Consultation and Specialists Conducted PPP
25/11/2010	THE PROPOSED CHANGE OF LAND USE FROM ZONED UNDETERMINED TO ESTABLISH MALIBONGWE PARK RESIDENTIAL AREA ON THE REMAINDER OF ERF 830, PELICAN PARK	AMENDMENT	THE DEPARTMENT OF HUMAN SETTLEMENTS	
01/07/2014	THE PROPOSED UPGRADE OF THE WASTEWATER TREATMENT WORKS "WWTW" AT THE 'OLOF BERGH' DISTELLERY, GOUDINI	EIA	DISTELL (PTY) LTD	
19/10/2010	THE PROPOSED FLAT SIGN TO BE ERECTED ON THE FAÇADE OF A BUILDING LOCATED ON ERF 173335, PAARDEN EILAND.	SIGNAGE APP	FRANCIS CONSULTANTS (TOWN PLANNERS)	compilation & submission of application.
29/03/2012	THE TOWNSHIP DEVELOPMENT ON ERF NO. 56719, PHENDULA CRESENT, KHAYELITHSA.	AMENDMENT	JUBELIE PROJECT MANAGEMENT (PTY) LTD	<u>Secondary EAP</u> Main Author of all reports (reviewed by Doug Jeffery) Liaised with Authorities, Organs of State, Public Consultation and Specialists Conducted PPP
08/02/2013	THE PROPOSED UPGRADE OF THE VILLIERSDORP WASTE WATER TREATMENT WORKS	EIA/ WASTE LICENSE	THEEWATERSKLOOF MUNICIPALITY	
30/01/2015	THE PROPOSED DEVELOPMENT OF A RETIREMENT VILLAGE AND ASSOCIATED INFRASTRUCTURE ON THE REMAINDER OF ERF 61, SIMONS TOWN	BAR	THE ROTARY CLUB OF CAPE TOWN	
12/05/2011	THE CONSTRUCTION OF A RESIDENCE ON ERF 52, LOVERS WALK, ROOIELS	24G	MIKE LEVETT	
24/10/2016	THE UNLAWFUL COMMENCEMENT OF LISTED ACTIVITIES: UNLAWFUL COMMENCEMENT OF LISTED ACTIVITIES TO ESTABLISH AN AGRI-PARK ON PORTION 128 OF FARM 468, STELLENBOSCH	24G	OLD ABLAND (PTY) LTD	
22/06/2011	THE RECTIFICATION OF THE UNLAWFUL CONSTRUCTION OF AN AIRSTRIP ON FARM NO. 417, GROOTVLEI, TULBAGH	24G	KARWEIDERSKRAAL TRUST	

19/11/2007	PROPOSED RESIDENTIAL DEVELOPMENT ON ERF NO. 1491, HAGLEY, BLUE DOWNS	AMENDMENT	MEIPROPS 22 (PTY) LTD	
27/07/2010	THE ESTABLISHMENT OF A SERVICE TRADE AREA ON FARM GROENFONTEIN NO. 716/16, PAARL	BAR	HELU PARK (PTY) LTD	
09/06/2010	THE DEVELOPMENT OF A RETIREMENT VILLAGE ON ERF NO.1738, MONTAGU	BAR	REALTY DYNAMIX 104 (PTY) LTD	
22/08/2011	UPGRADE OF THE DWARSKERSBOS SEWERAGE TREATMENT WORKS: PORTION 4 OF THE FARM 109 DWARSKERSBOS, BERGRIVIER MUNICIPALITY	EIA	BERGRIVIER MUNICIPALITY	
20/06/2012	THE DEVELOPMENT ON MEERENDAL PORTION 1 OF FARM NO. 159, DURBANVILLE.	BAR	MEERENDAL WINE ESTATE (PTY) LTD	<u>Secondary EAP</u> Main Author of all reports (reviewed by Doug Jeffery) Liaised with Authorities, Organs of State, Public Consultation and Specialists Conducted PPP
16/03/2011	CONSTRUCTION OF A SEWERAGE PIPELINE TO SERVE DRIFTSANDS	BAR	CITY OF CAPE TOWN	
24/11/2009	THE REZONING AND SUBDIVISION OF ERF NO. 21973, KHAYELITSHA	BAR	NU-WAY HOUSING DEVELOPMENTS (PTY) LTD	
24/11/2010	DAL JOSAFAT DEVELOPMENT ON ERF NO. 16161 AND REMAINDER OF ERF NO. 17680, PAARL	EIA	ERF 16161 PAARL DEVELOPMENT (PTY) LTD	
21/07/2009	THE PROPOSED USE AND/OR DISPOSAL OF SEDIMENT FROM ZEEKOEVLIE, CAPE FARM NOS. 848-0, 840-1, 847-01, 846-0, 844-31, 837-0, 838-0 AND ERF 93284, ZEEKOEVLIE NATURE RESERVE	BAR	CITY OF CAPE TOWN	

## **ANNEXURE 2: LOCALITY PLAN**

## Locality Map 1

Legend



Map Center: Lon: 19°23'19.8"E  
Lat: 33°54'47.8"S

Scale: 1:36,112

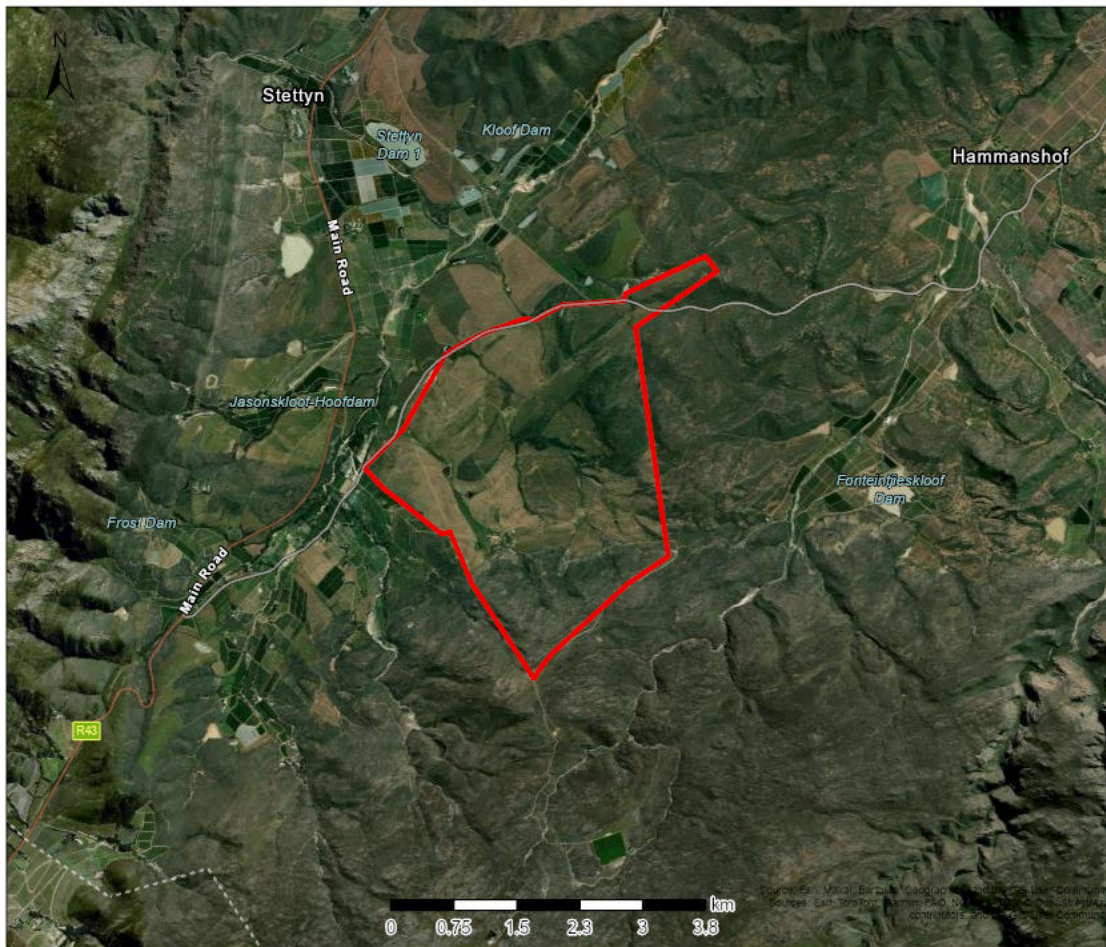
Date created: 2025/26/05



Western Cape  
Government  
FOR YOU

## Locality Map 2

Legend



Map Center: Lon: 19°23'38.2"E  
Lat: 33°54'48.6"S

Scale: 1:72,224

Date created: 2025/26/05



Western Cape  
Government  
FOR YOU



## Locality Map 3

Legend



Map Center: Lon: 19°23'13.2"E  
Lat: 33°52'1.9"S

Scale: 1:288,895

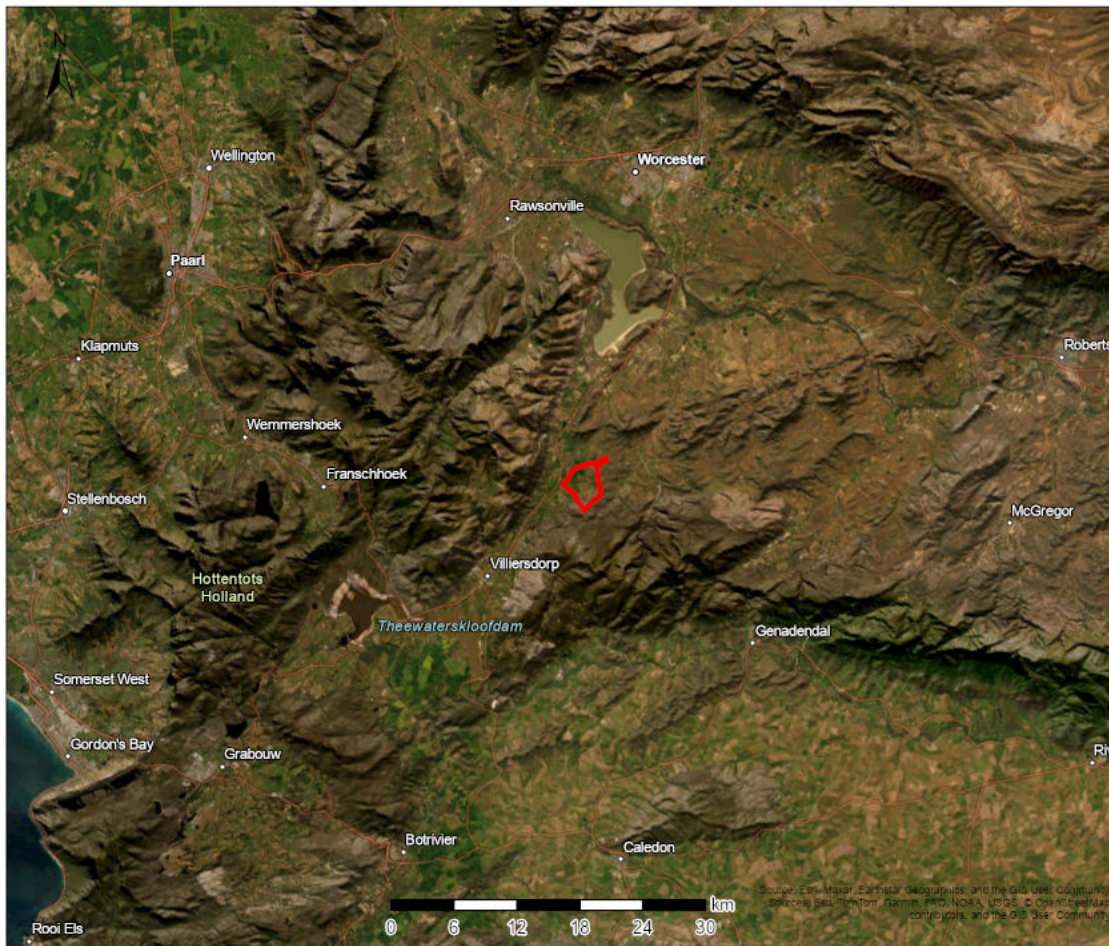
Date created: 2025/26/05



Western Cape  
Government  
FOR YOU

## Locality Map 4

Legend



Map Center: Lon: 19°21'57.8"E  
Lat: 33°54'25.5"S

Scale: 1:577,791

Date created: 2025/26/05



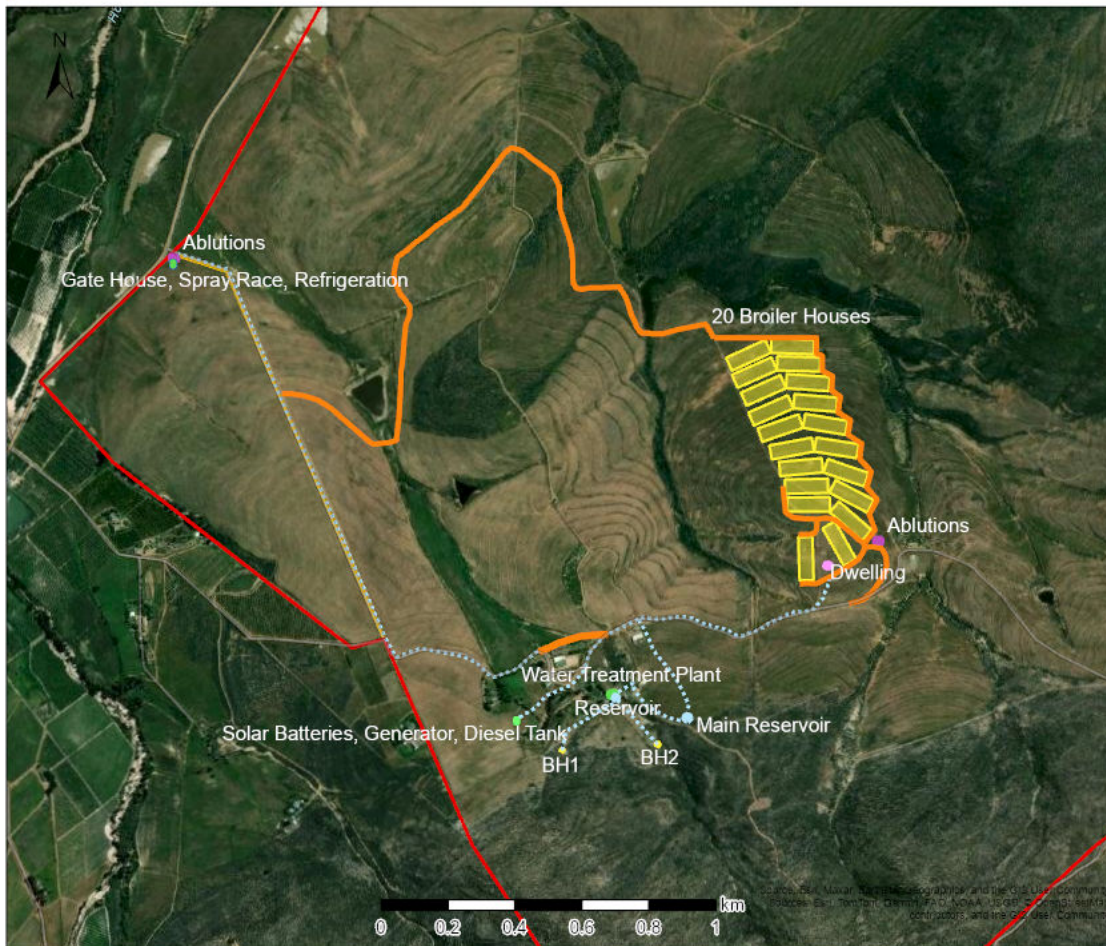
Western Cape  
Government  
FOR YOU

## **ANNEXURE 3A: SITE DEVELOPMENT PLAN**



# Kleinfontein Broiler Facility: Site Development Plan

Legend



Map Center: Lon: 19°23'7.5"E  
Lat: 33°54'53.8"S

Scale: 1:18,056

Date created: 2025/07/08



**Western Cape  
Government**  
FOR YOU

## Kleinfontein Broiler Facility: Site Development Plan (Entrance)

Legend

Ablutions  
Gate House, Spray Race, Refrigeration

0 0.1 0.2 0.3 0.4 0.5 km

Source: Esri, Maxar, Earthstar Geographics, and the GIS User Community  
Sources: Esri, TomTom, Garmin, FAO, NOAA, USGS, © OpenStreetMap contributors, and the GIS User Community

Map Center: Lon: 19°22'41.6"E  
Lat: 33°54'40.2"S

Scale: 1:9,028

Date created: 2025/07/08

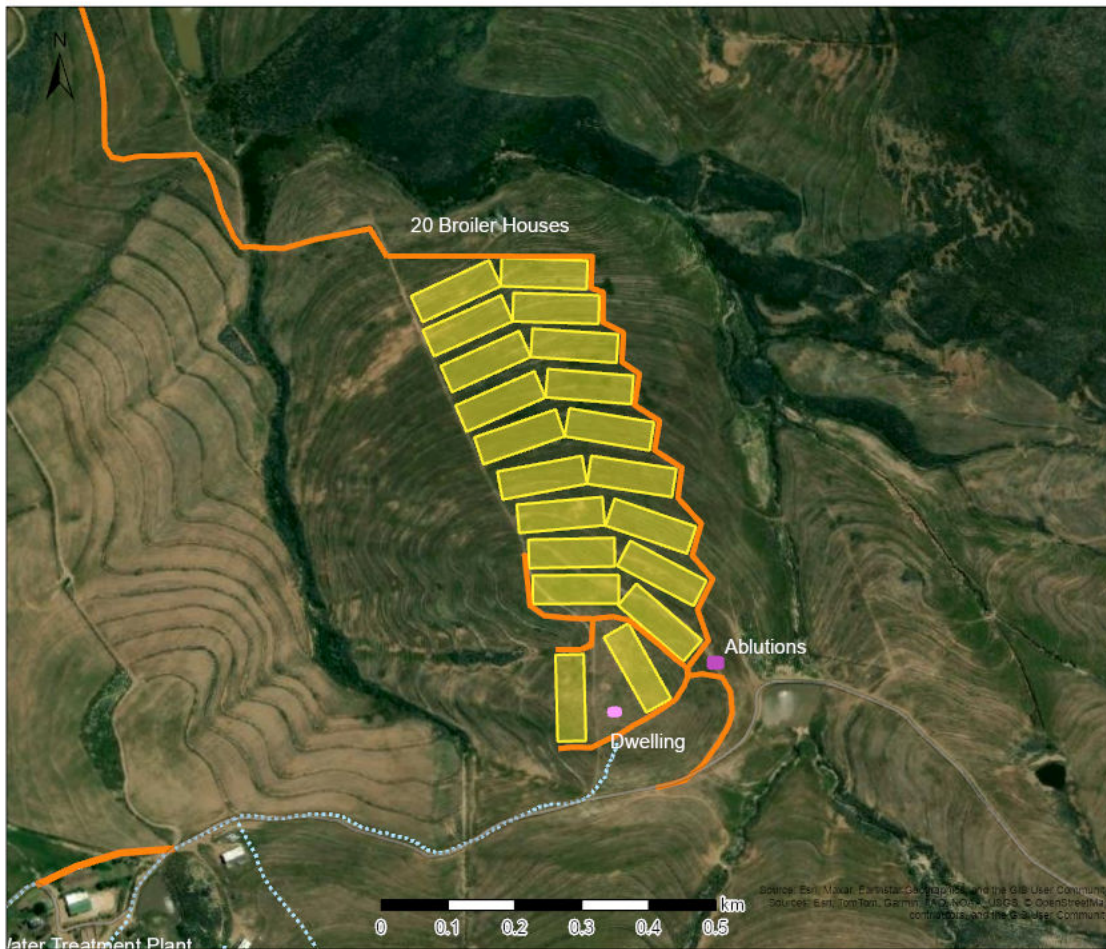


Western Cape  
Government  
FOR YOU



## Kleinfontein Broiler Facility: Site Development Plan (Broiler Houses)

Legend



Map Center: Lon: 19°23'35.4"E  
Lat: 33°54'51.1"S

Scale: 1:9,028

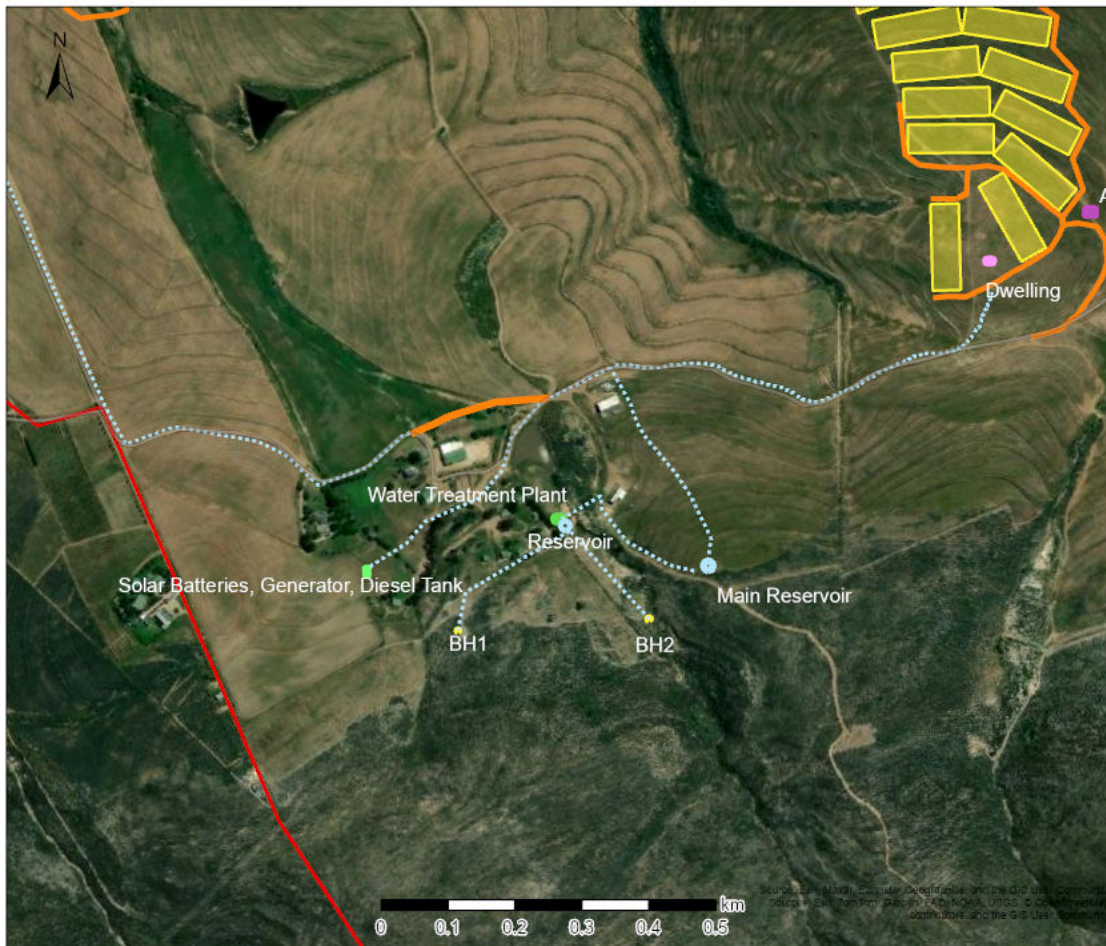
Date created: 2025/07/08



Western Cape  
Government  
FOR YOU

## Kleinfontein Broiler Facility: Site Development Plan (Farmyard)

Legend



Map Center: Lon: 19°23'13.6"E  
Lat: 33°55'12.7"S

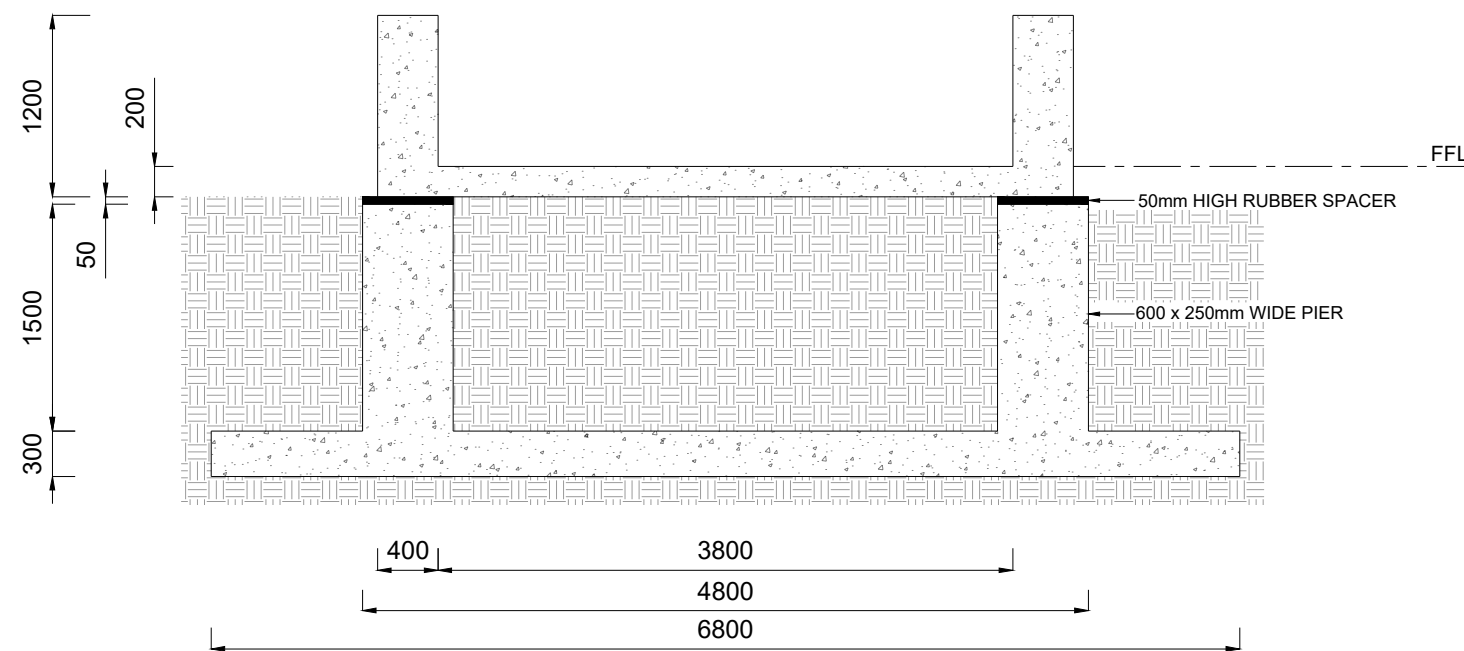
Scale: 1:9,028

Date created: 2025/07/08

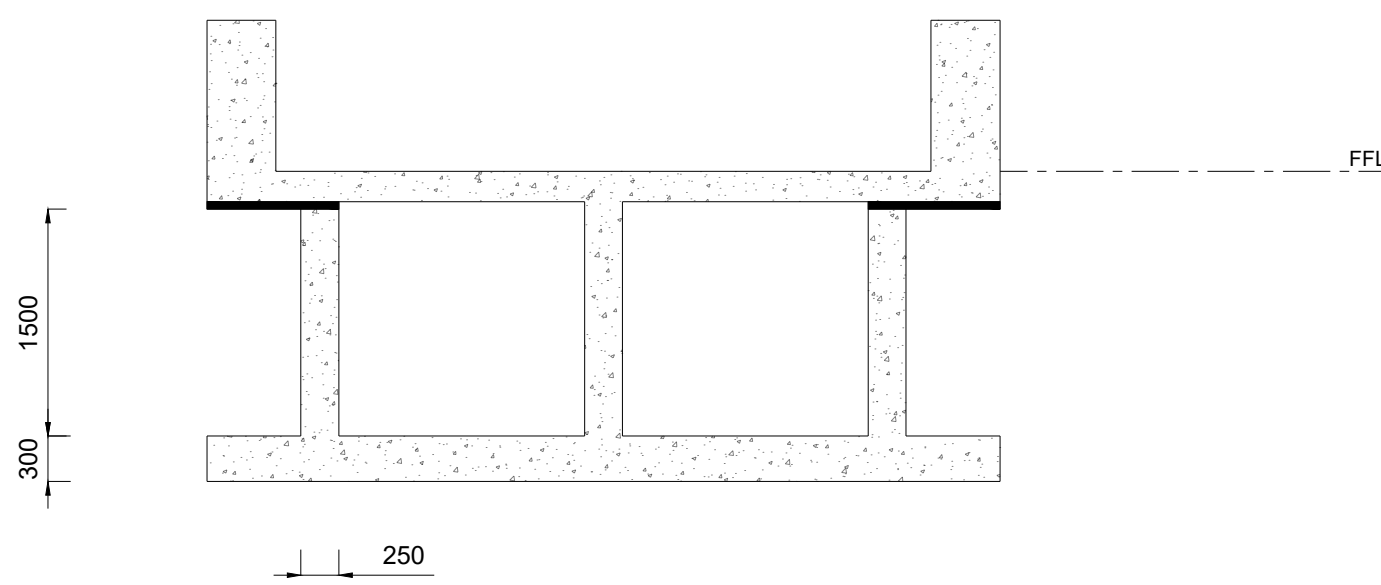


**Western Cape  
Government**  
FOR YOU

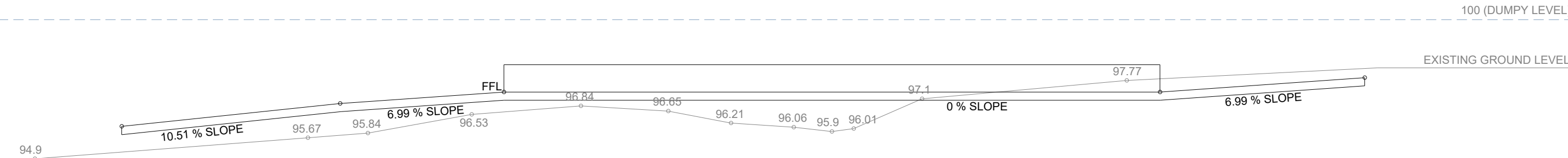




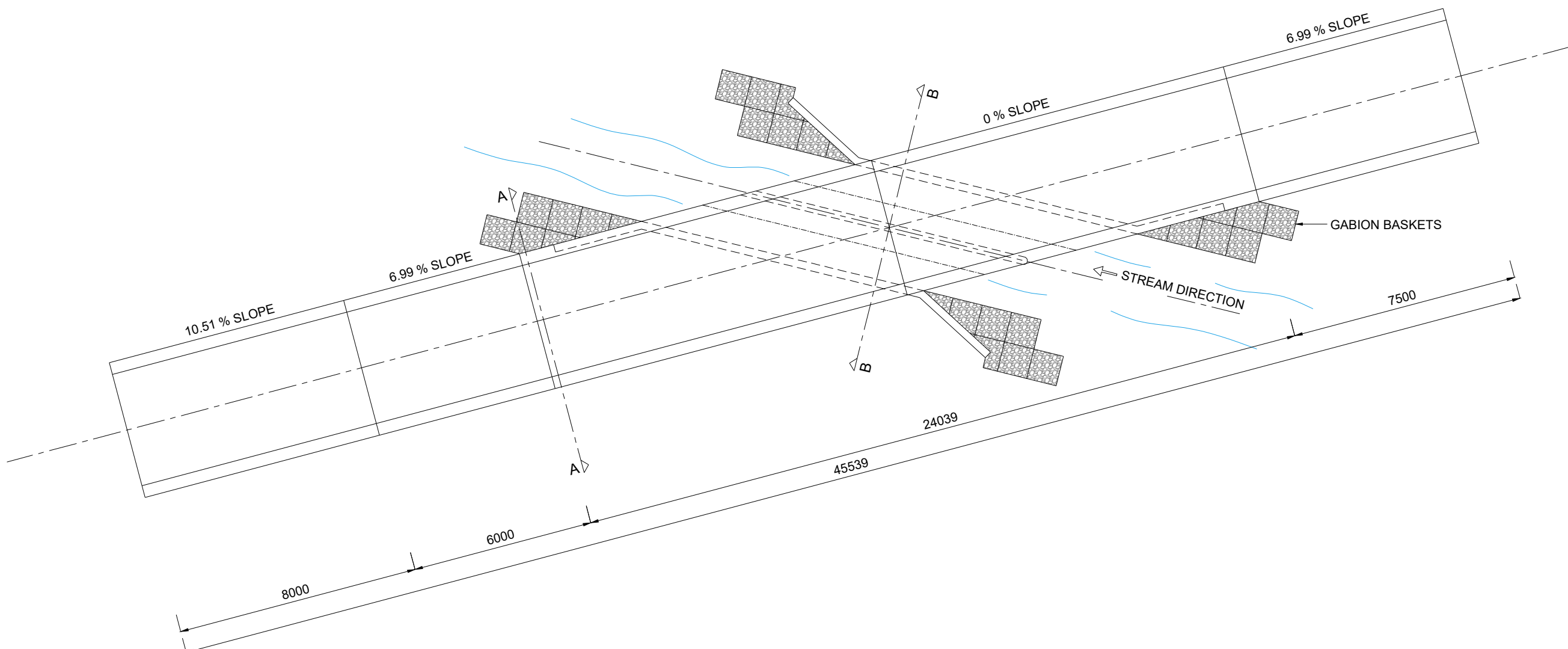
SECTION A-A  
SCALE: 1:50



SECTION B-B  
SCALE: 1:50



ELEVATION VIEW  
SCALE: 1:150



PLAN VIEW  
SCALE: 1:150



ON SITE VIEW  
SCALE: 2:1

LEGEND:  
CONCRETE

- NOTES:
- DIMENSIONS IN MILLIMETERS.
  - SITE SURVEYING AND MEASUREMENTS WERE DONE TO COMPLETE THESE DRAWINGS.
  - THESE DRAWINGS ARE FOR INFORMATION AND NOT FINAL.

REV	DATE	DESCRIPTION	BY
R01	01-08-2025	ADDITIONS MADE	TR
R00	10-07-2025	INFORMATION	TR

- REVISIONS
- The copyright of this design and drawing is reserved.
  - Scaled measurements are not valid.
  - Check drawing measurements before commencing work.
  - This drawing is specific to this project and should not be used for any other project or on any other site.

By:  
**FORE**  
FORE ENGINEERING SOLUTIONS (PTY) LTD  
TEL: (+27) 21 569 4360  
E-MAIL: info@foreng.co.za  
ADDRESS: Klein Joostenberg Farm, Die Steeg 1, R304, Muldersvlei, Stellenbosch, 7606

Pr Eng Date

Client

KLEINFONTEIN

BRIDGE DETAIL

USE

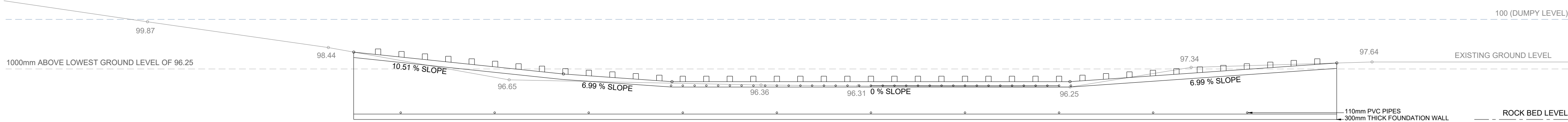
INFORMATION

DRAWN	DATE	CHECKED	SCALE
TR	10-07-2025	WV/TR	AS SHOWN

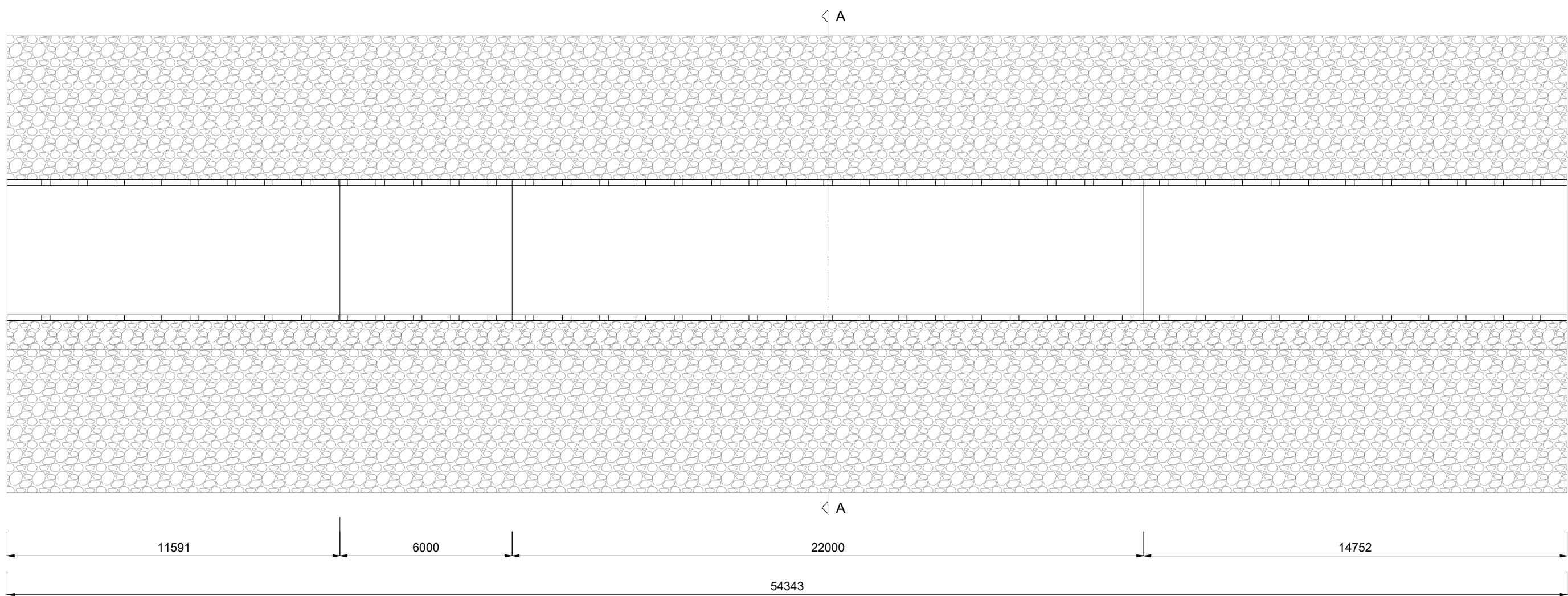
DRAWING NUMBER			
F 2 5 0 1 7	I 0 0 3	R 0 1	
PROJECT NUMBER	DISC	DRAWING CODE	REVISION

\*NOTE: REFER TO FIGURE 1: MARKING NO 2 ON DESIGN REPORT.

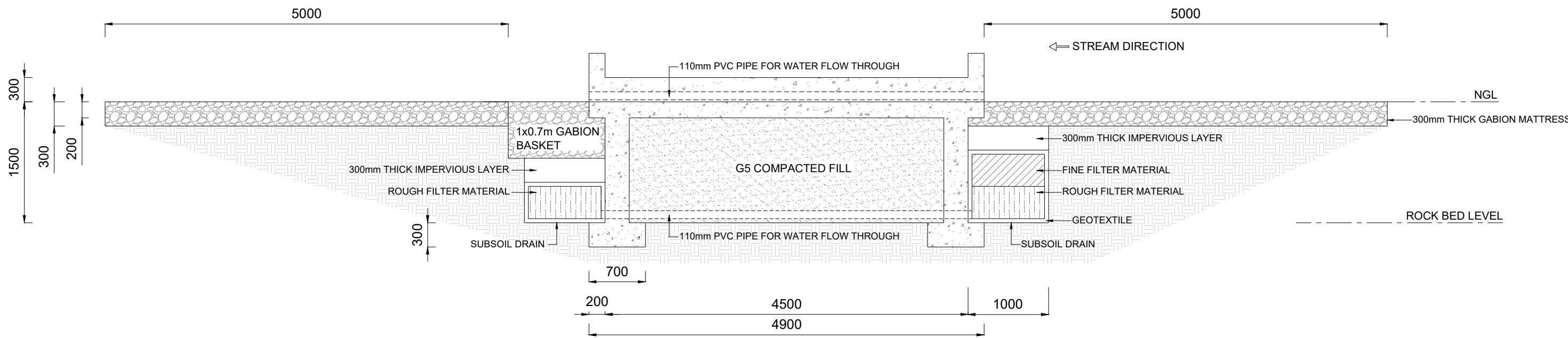




ELEVATION VIEW  
SCALE: 1:150



PLAN VIEW  
SCALE: 1:150



SECTION A-A  
SCALE: 1:50

\*NOTE: REFER TO FIGURE 1: MARKING NO 1 ON DESIGN REPORT.



ON SITE VIEW  
SCALE: 2:1

LEGEND:

CONCRETE

- NOTES:
- DIMENSIONS IN MILLIMETERS.
  - SITE SURVEYING AND MEASUREMENTS WERE DONE TO COMPLETE THESE DRAWINGS.
  - THESE DRAWINGS ARE FOR INFORMATION AND NOT FINAL.

REV	DATE	DESCRIPTION	BY
R01	01-08-2025	ADDITIONS MADE	TR
R00	10-07-2025	INFORMATION	TR

REVISIONS			
<ul style="list-style-type: none"><li>The copyright of this design and drawing is reserved.</li><li>Scaled measurements are not valid.</li><li>Check drawing measurements before commencing work.</li><li>This drawing is specific to this project and should not be used for any other project or on any other site.</li></ul>			

By:

**FORE**

FORE ENGINEERING SOLUTIONS (PTY) LTD

TEL: (+27) 21 569 4360

E-MAIL: info@foreng.co.za

ADDRESS: Klein Joostenberg Farm, Die Steeg 1, R304, Muldersvlei, Stellenbosch, 7606

Pr Eng Date

Client

KLEINFONTEIN

LOW WATERWAY BRIDGE 1 DETAIL

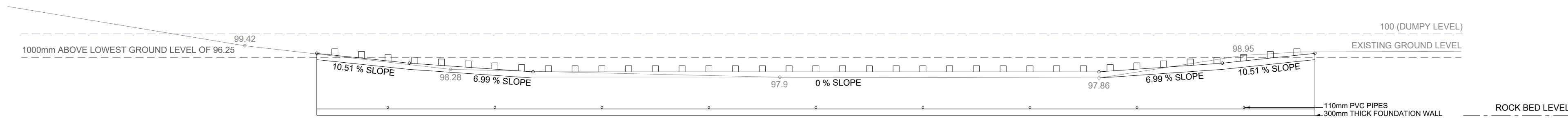
USE

INFORMATION

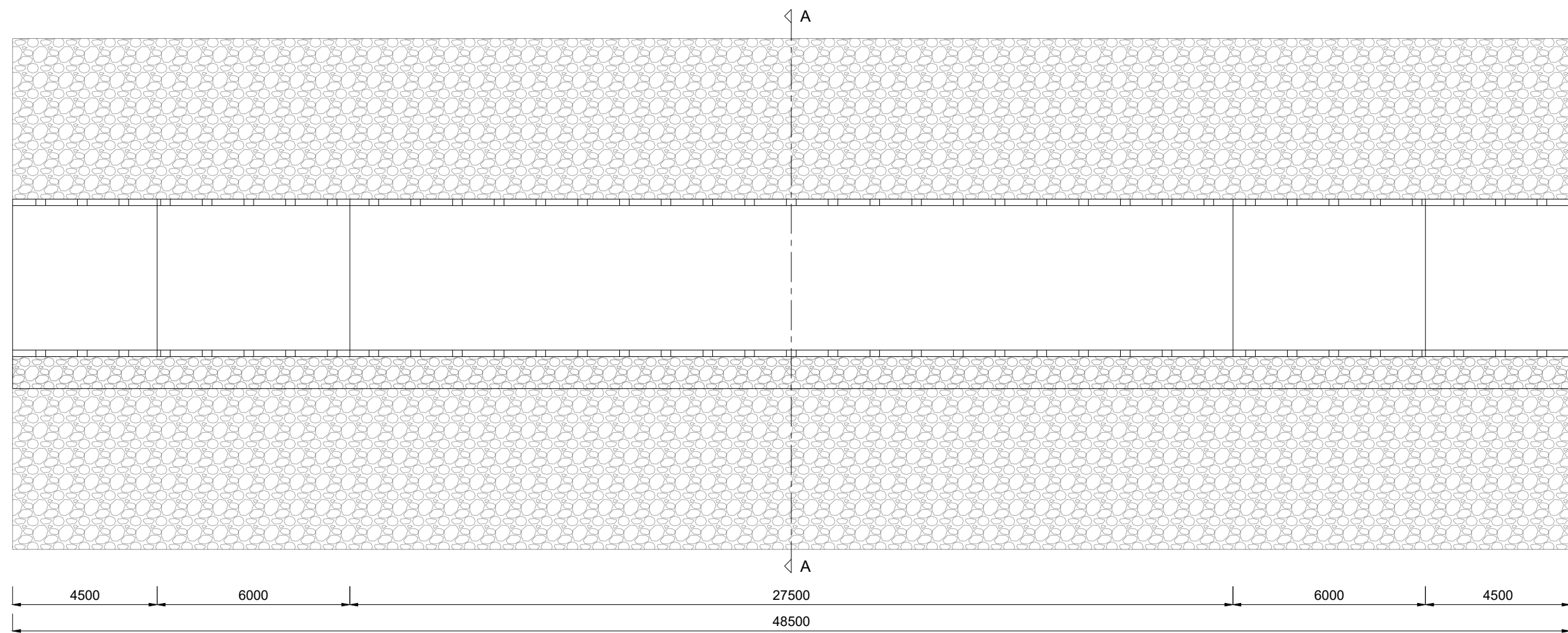
DRAWN	DATE	CHECKED	SCALE
TR	10-07-2025	WV/TR	AS SHOWN

DRAWING NUMBER			
F 2 5 0 1 7	I 0 0 1	R 0 1	
PROJECT NUMBER	DISC	DRAWING CODE	REVISION

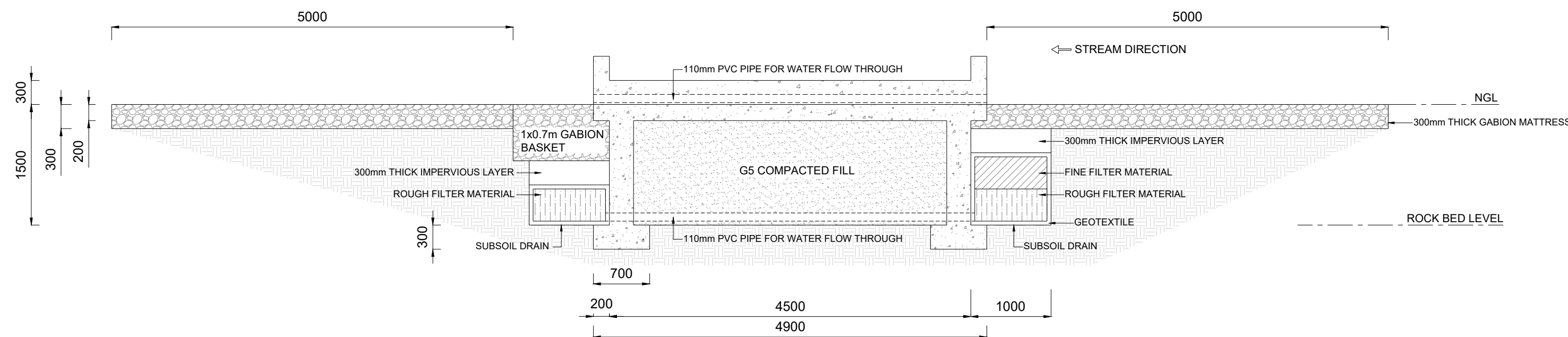




**ELEVATION VIEW**  
SCALE: 1:150



**PLAN VIEW**  
SCALE: 1:150



**SECTION A-A**  
SCALE: 1:50

\*NOTE: REFER TO FIGURE 1: MARKING NO 4 ON DESIGN REPORT.



**ON SITE VIEW**  
SCALE: 2:1

LEGEND:

CONCRETE

NOTES:

- DIMENSIONS IN MILLIMETERS.
- SITE SURVEYING AND MEASUREMENTS WERE DONE TO COMPLETE THESE DRAWINGS.
- THESE DRAWINGS ARE FOR INFORMATION AND NOT FINAL.

REV	DATE	DESCRIPTION	BY
R01	01-08-2025	ADDITIONS MADE	TR
R00	10-07-2025	INFORMATION	TR
REVISIONS			
<ul style="list-style-type: none"><li>The copyright of this design and drawing is reserved.</li><li>Scaled measurements are not valid.</li><li>Check drawing measurements before commencing work.</li><li>This drawing is specific to this project and should not be used for any other project or on any other site.</li></ul>			

By:

**FORE**

FORE ENGINEERING SOLUTIONS (PTY) LTD  
TEL: (+27) 21 569 4360  
E-MAIL: info@foreng.co.za  
ADDRESS: Klein Joostenberg Farm, Die Steeg 1, R304, Muldersvlei, Stellenbosch, 7606

Pr Eng

Date

Client

**KLEINFONTEIN**

**LOW WATERWAY BRIDGE 2 DETAIL**

USE

**INFORMATION**

DRAWN	DATE	CHECKED	SCALE
TR	10-07-2025	WV/TR	AS SHOWN

DRAWING NUMBER

**F 2 5 0 1 7 | I 0 0 2 | R 0 1**

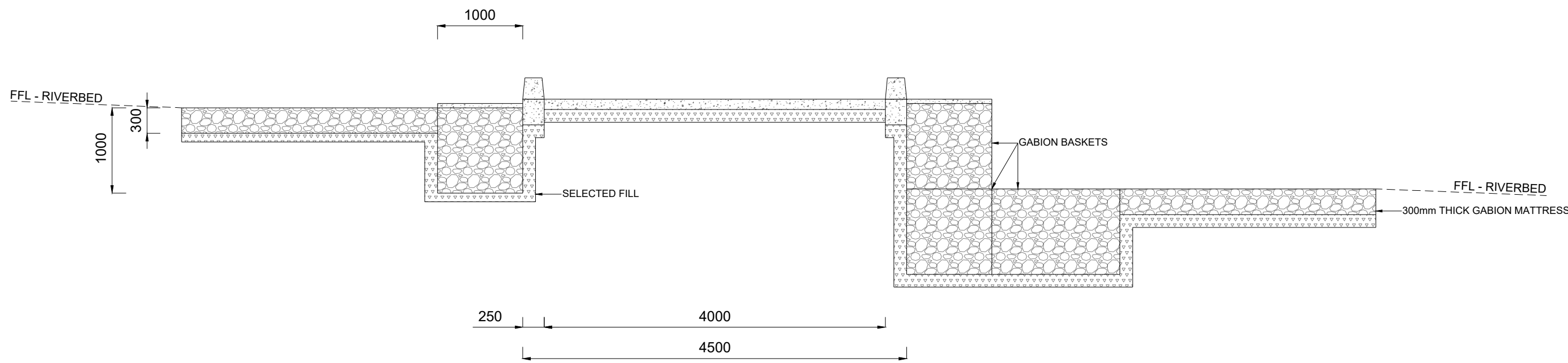
PROJECT NUMBER

DISC

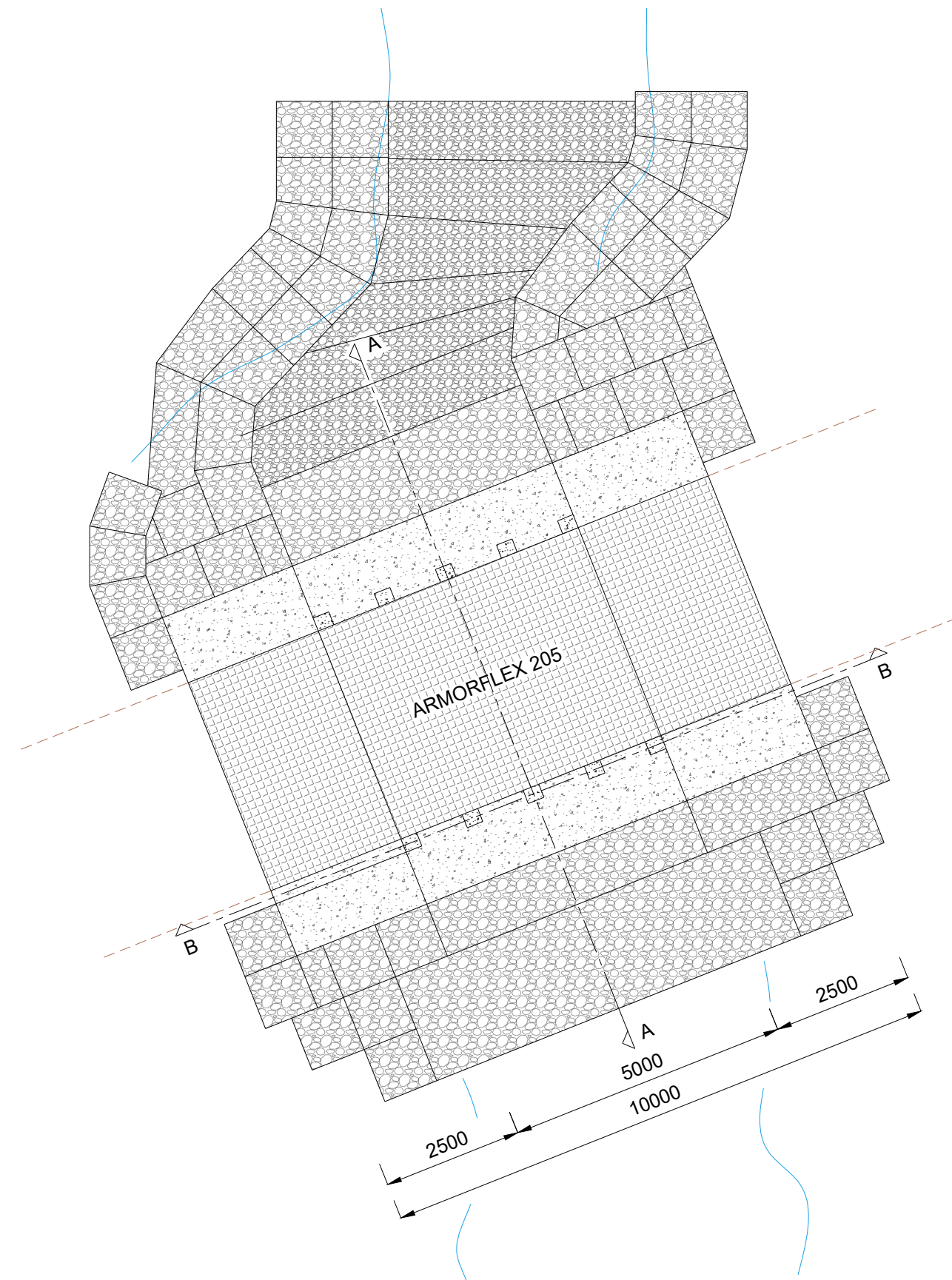
DRAWING CODE

REVISION

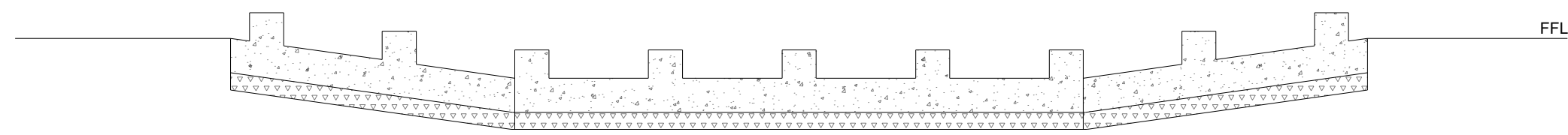




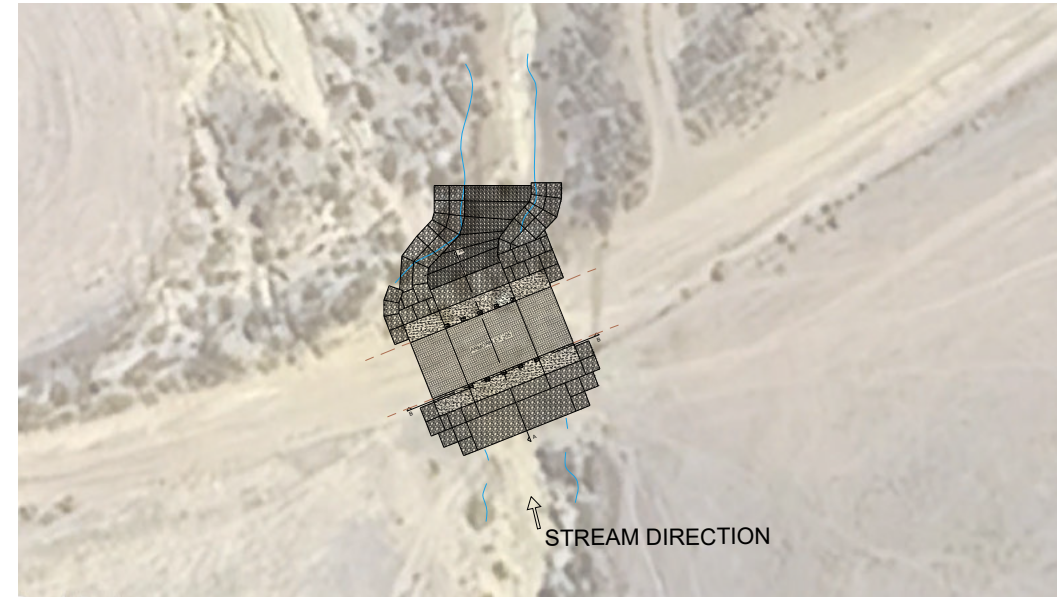
**SECTION A-A**  
SCALE: 1:50



**PLAN VIEW**  
SCALE: 1:150



**SECTION B-B**  
SCALE: 1:50




**ON SITE VIEW**  
SCALE: 2:1



\*NOTE: REFER TO FIGURE 1: MARKING NO 3 ON DESIGN REPORT.

LEGEND:

 - CONCRETE

NOTES:

- DIMENSIONS IN MILLIMETERS.
- SITE SURVEYING AND MEASUREMENTS WERE DONE TO COMPLETE THESE DRAWINGS.
- THESE DRAWINGS ARE FOR INFORMATION AND NOT FINAL.

REV	DATE	DESCRIPTION	BY
R01	01-08-2025	ADDITIONS MADE	TR
R00	10-07-2025	INFORMATION	TR

REVISIONS

- The copyright of this design and drawing is reserved.
- Scaled measurements are not valid.
- Check drawing measurements before commencing work.
- This drawing is specific to this project and should not be used for any other project or on any other site.

By:

**FORE**

FORE ENGINEERING SOLUTIONS (PTY) LTD

TEL: (+27) 21 569 4360

E-MAIL: info@foreng.co.za

ADDRESS: Klein Joostenberg Farm, Die Steeg 1, R304, Muldersvlei, Stellenbosch, 7606

Pr Eng

Date

Client

**KLEINFONTEIN**

**STREAM CROSSING DETAIL**

USE

**INFORMATION**

DRAWN	DATE	CHECKED	SCALE
TR	10-07-2025	WV/TR	AS SHOWN

DRAWING NUMBER

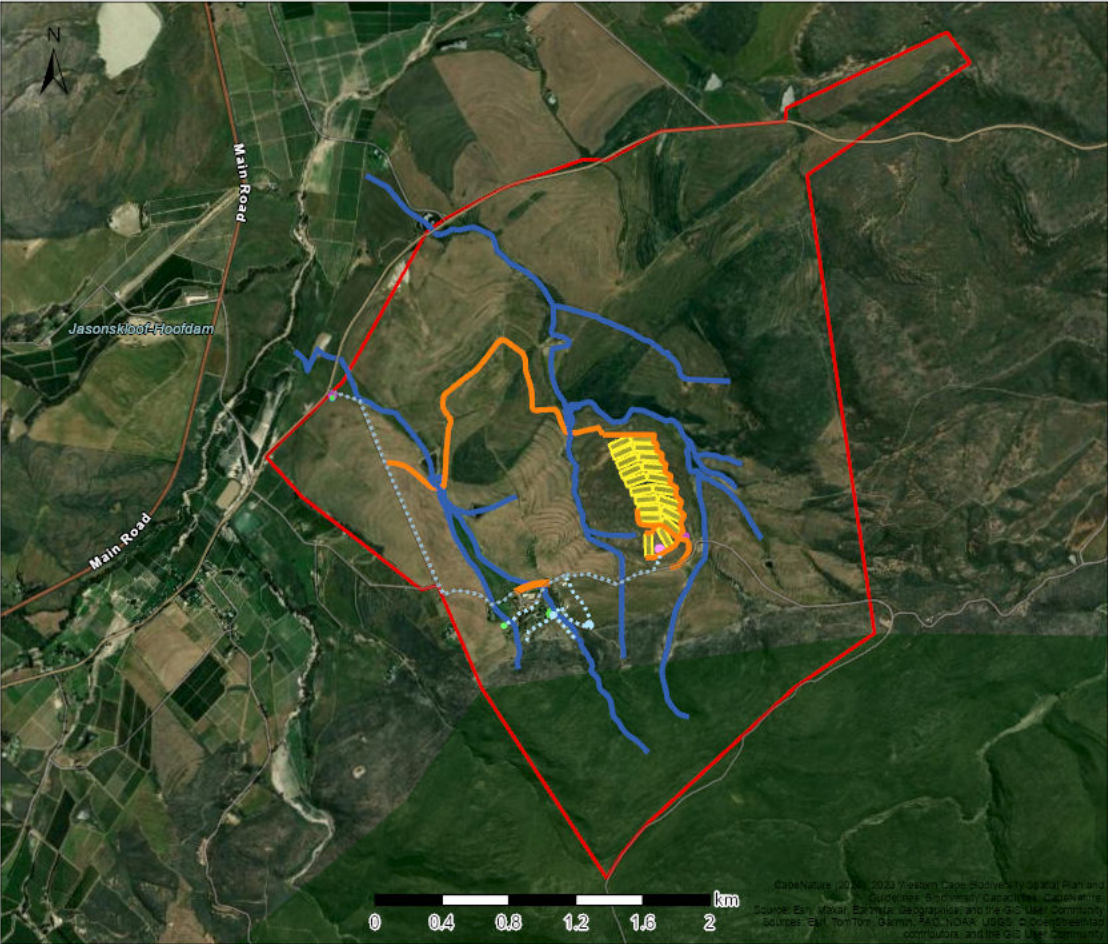
**F 2 5 0 1 7 | I 0 0 4 | R 0 1**

PROJECT NUMBER | DISC | DRAWING CODE | REVISION



## **ANNEXURE 3B: ENVIRONMENTAL SENSITIVITY MAP**

## Kleinfontein Broiler Facility: Environmental Sensitivities Map



■ Protected Areas

Map Center: Lon: 19°23'14.2"E  
Lat: 33°54'47.8"S

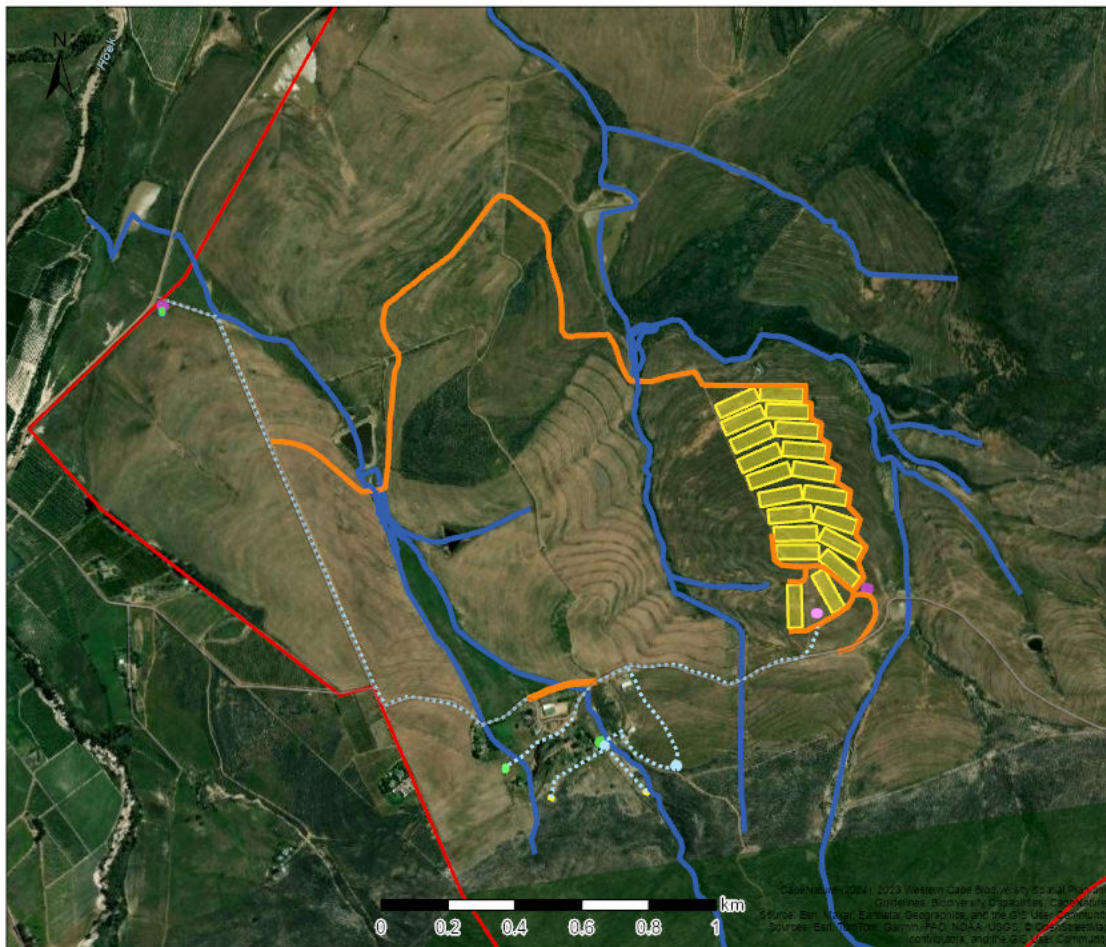
Scale: 1:36,112

Date created: 2025/07/08



Western Cape  
Government  
FOR YOU

## Kleinfontein Broiler Facility: Environmental Sensitivities Map



Legend

Protected Areas

Map Center: Lon: 19°23'8.8"E  
Lat: 33°54'49.3"S

Scale: 1:18,056

Date created: 2025/07/08



Western Cape  
Government  
FOR YOU

Copyright (c) 2024, 2023 Western Cape Government, 2023  
Copyright, 2023 Western Cape Government, 2023  
Source: Earthstar, Earthstar Geographics, and the GIS User Community  
Source: Earthstar, Earthstar Geographics, and the GIS User Community

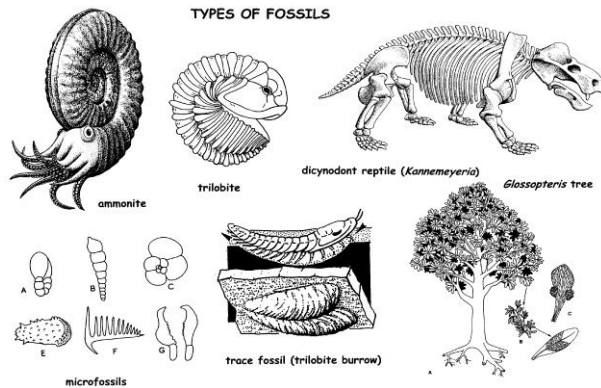
#### **ANNEXURE 4: FOSSIL FINDS POSTER**



## Palaeontology: what is a fossil?

Fossils are the traces of ancient life (animal, plant or microbial) preserved within rocks and come in two forms:

- Body fossils preserve parts, casts or impressions of the original tissues of an organism (e.g. bones, teeth, wood, pollen grains); and
- Trace fossils such as trackways and burrows record ancient animal behaviour.



### How to report chance fossil finds: What should I do if I find a fossil during construction/mining?

If you think you have identified a fossil:

Immediately inform the ECO or Site Agent.  
He/she will then contact HWC and write a report  
and if necessary operations will stop in that  
specific area until the fossil is recovered

Heritage Western Cape  
[ceoheritage@westerncape.gov.za](mailto:ceoheritage@westerncape.gov.za)

021 483 5959

[www.hwc.org.za](http://www.hwc.org.za)

iLifa leMveli iNtshona Kakhulu  
Erfenis Wes-Kaap  
Heritage Western Cape

## Types of palaeontological finding - What does a fossil look like?

Fossils vary in size, from fossilised tree trunks and dinosaur bones down to very small animals or plants.  
Finds can be **individual fossils** (one isolated wood log or bone) or **clusters and beds** (several bones, teeth, animal or plant remains, trace fossils in close proximity or bones resembling part of a skeleton). A bed of fossils is a layer with many fossil remains.

Below there is a list of few examples of fossils which may be identified during excavations in the Western Cape.

Image	Description	Image	Description
	Leaves		Snail shells and other shells
	Fossil wood		Bones of larger animals
	The remains of fish and marine life (e.g. teeth, scales, starfish)		Large burrows made by moles and other animals
	Stromatolites		Traces made by burrowing insects (ants, wasps, dung-beetles etc.).
	Animal footprints		

Images provided by Dr John Almond

Text by HWC's Archaeology, Palaeontology & Meteorites Committee June 2016

