

**SCREENING REPORT FOR AN ENVIRONMENTAL AUTHORIZATION AS  
REQUIRED BY THE 2014 EIA REGULATIONS – PROPOSED SITE  
ENVIRONMENTAL SENSITIVITY**

**EIA Reference number:**

**Project name:** Kleinfontein 954 Chicken Farm

**Project title:** Kleinfontein 954 Chicken Farm

**Date screening report generated:** 30/05/2025 13:41:56

**Applicant:** Elgin Free Range Chickens

**Compiler:** PHS Consulting

**Compiler signature:**

.....

**Application Category:** Agriculture\_Forestry\_Fisheries|Animal Production

## Table of Contents

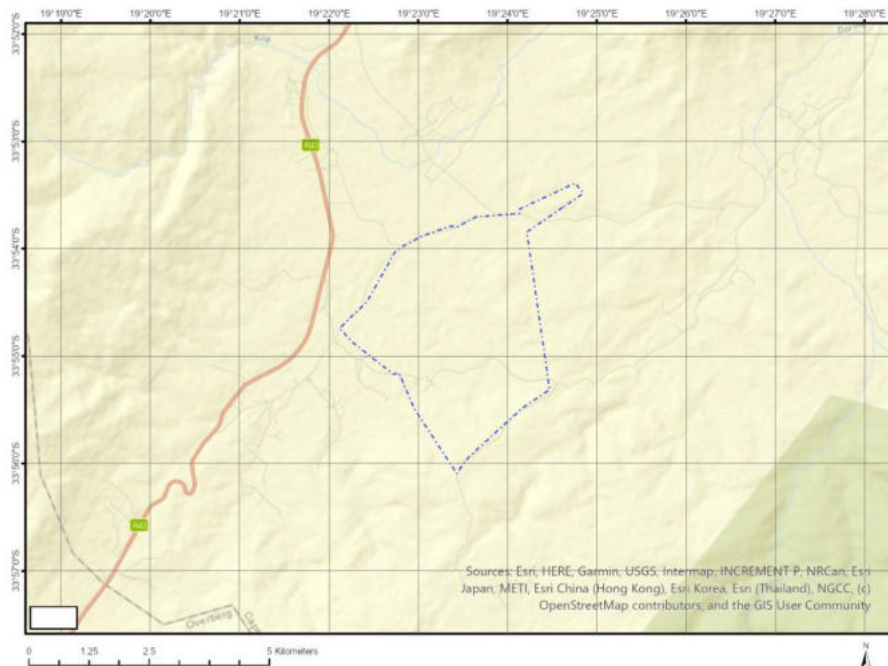
Proposed Project Location .....	3
Orientation map 1: General location .....	3
Map of proposed site and relevant area(s) .....	4
Cadastral details of the proposed site .....	4
Wind and Solar developments with an approved Environmental Authorisation or applications under consideration within 30 km of the proposed area .....	4
Environmental Management Frameworks relevant to the application .....	5
Environmental screening results and assessment outcomes .....	5
Relevant development incentives, restrictions, exclusions or prohibitions .....	5
Proposed Development Area Environmental Sensitivity .....	5
Specialist assessments identified .....	6
Results of the environmental sensitivity of the proposed area .....	7
MAP OF RELATIVE AGRICULTURE THEME SENSITIVITY .....	7
MAP OF RELATIVE ANIMAL SPECIES THEME SENSITIVITY .....	8
MAP OF RELATIVE AQUATIC BIODIVERSITY THEME SENSITIVITY .....	9
MAP OF RELATIVE ARCHAEOLOGICAL AND CULTURAL HERITAGE THEME SENSITIVITY .....	10
MAP OF RELATIVE CIVIL AVIATION THEME SENSITIVITY .....	11
MAP OF RELATIVE DEFENCE THEME SENSITIVITY .....	12
MAP OF RELATIVE PALEONTOLOGY THEME SENSITIVITY .....	13
MAP OF RELATIVE PLANT SPECIES THEME SENSITIVITY .....	14
MAP OF RELATIVE TERRESTRIAL BIODIVERSITY THEME SENSITIVITY .....	16

## Proposed Project Location

### Orientation map 1: General location



## Map of proposed site and relevant area(s)



## Cadastral details of the proposed site

Property details:

No	Farm Name	Farm/ Erf No	Portion	Latitude	Longitude	Property Type
1		563	0	33°55'2.92S	19°22'34.04E	Farm
2		564	0	33°54'42.89S	19°22'25.51E	Farm
3		565	0	33°54'41.2S	19°22'14.83E	Farm
4	KLEINFONTEIN	954	0	33°54'45.83S	19°23'29.63E	Farm
5		563	0	33°54'57.07S	19°22'31.66E	Farm Portion
6		564	0	33°54'42.89S	19°22'25.52E	Farm Portion
7		565	0	33°54'41.2S	19°22'14.83E	Farm Portion
8		695	0	33°56'57.17S	19°23'45.51E	Farm Portion
9		695	1	33°55'28.95S	19°23'34.67E	Farm Portion
10		696	0	33°54'25.86S	19°23'34.48E	Farm Portion
11	KLEINFONTEIN	954	0	33°54'48.21S	19°23'29.88E	Farm Portion

Development footprint<sup>1</sup> vertices:

No development footprint(s) specified.

## Wind and Solar developments with an approved Environmental Authorisation or applications under consideration within 30 km of the proposed area

<sup>1</sup> "development footprint", means the area within the site on which the development will take place and includes all ancillary developments for example roads, power lines, boundary walls, paving etc. which require vegetation clearance or which will be disturbed and for which the application has been submitted.

No	EIA Reference No	Classification	Status of application	Distance from proposed area (km)
1	16/3/3/1/E4/27/1020/21	Solar PV	Approved	24.1

## Environmental Management Frameworks relevant to the application

No intersections with EMF areas found.

## Environmental screening results and assessment outcomes

The following sections contain a summary of any development incentives, restrictions, exclusions or prohibitions that apply to the proposed development site as well as the most environmental sensitive features on the site based on the site sensitivity screening results for the application classification that was selected. The application classification selected for this report is:

**Agriculture\_Forestry\_Fisheries|Animal Production.**

### Relevant development incentives, restrictions, exclusions or prohibitions

The following development incentives, restrictions, exclusions or prohibitions and their implications that apply to this site are indicated below.

Incentive, restriction or prohibition	Implication
Strategic Gas Pipeline Corridors-Phase 1a & 1b: Saldanha to Ankerlig and Saldanha to Mossel Bay	<a href="https://screening.environment.gov.za/ScreeningDownloads/DevelopmentZones/Combined_GAS.pdf">https://screening.environment.gov.za/ScreeningDownloads/DevelopmentZones/Combined_GAS.pdf</a>
South African Protected Areas	<a href="https://screening.environment.gov.za/ScreeningDownloads/DevelopmentZones/SAPAD_OR_2024_Q4_Metadata.pdf">https://screening.environment.gov.za/ScreeningDownloads/DevelopmentZones/SAPAD_OR_2024_Q4_Metadata.pdf</a>

### Proposed Development Area Environmental Sensitivity

The following summary of the development site environmental sensitivities is identified. Only the highest environmental sensitivity is indicated. The footprint environmental sensitivities for the proposed development footprint as identified, are indicative only and must be verified on site by a suitably qualified person before the specialist assessments identified below can be confirmed.

Theme	Very High sensitivity	High sensitivity	Medium sensitivity	Low sensitivity
Agriculture Theme	X			
Animal Species Theme		X		
Aquatic Biodiversity Theme	X			
Archaeological and Cultural Heritage Theme				X
Civil Aviation Theme				X
Defence Theme				X
Paleontology Theme	X			
Plant Species Theme			X	

Terrestrial Biodiversity Theme	X			
--------------------------------	---	--	--	--

### Specialist assessments identified

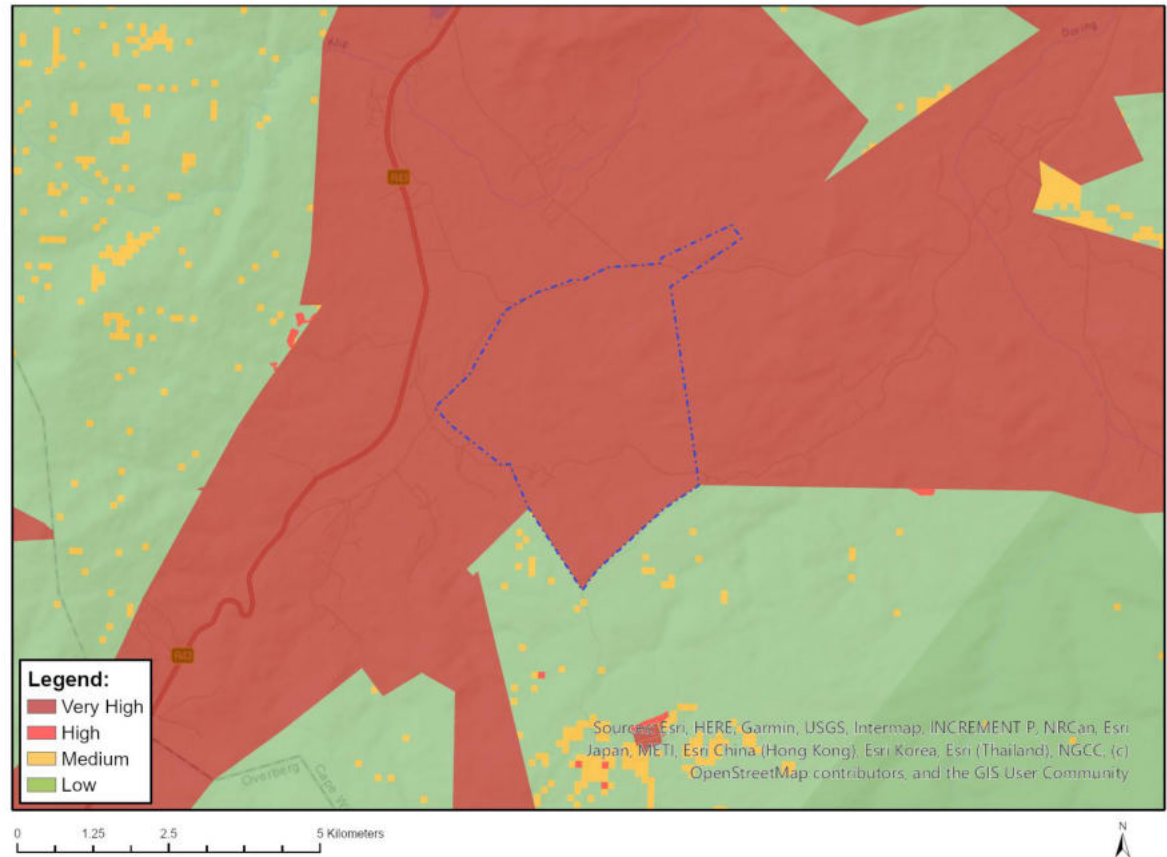
Based on the selected classification, and the known impacts associated with the proposed development, the following list of specialist assessments have been identified for inclusion in the assessment report. It is the responsibility of the EAP to confirm this list and to motivate in the assessment report, the reason for not including any of the identified specialist study including the provision of photographic evidence of the site situation.

No	Specialist assessment	Assessment Protocol
1	Landscape/Visual Impact Assessment	<a href="https://screening.environment.gov.za/ScreeningDownloads/AssessmentProtocols/Gazetted_General_Requirement_Assessment_Protocols.pdf">https://screening.environment.gov.za/ScreeningDownloads/AssessmentProtocols/Gazetted_General_Requirement_Assessment_Protocols.pdf</a>
2	Archaeological and Cultural Heritage Impact Assessment	<a href="https://screening.environment.gov.za/ScreeningDownloads/AssessmentProtocols/GuidanceforHIA.pdf">https://screening.environment.gov.za/ScreeningDownloads/AssessmentProtocols/GuidanceforHIA.pdf</a>
3	Palaeontology Impact Assessment	<a href="https://screening.environment.gov.za/ScreeningDownloads/AssessmentProtocols/GuidanceforPIA.pdf">https://screening.environment.gov.za/ScreeningDownloads/AssessmentProtocols/GuidanceforPIA.pdf</a>
4	Terrestrial Biodiversity Impact Assessment	<a href="https://screening.environment.gov.za/ScreeningDownloads/AssessmentProtocols/Gazetted_Terrestrial_Biodiversity_Assessment_Protocols.pdf">https://screening.environment.gov.za/ScreeningDownloads/AssessmentProtocols/Gazetted_Terrestrial_Biodiversity_Assessment_Protocols.pdf</a>
5	Aquatic Biodiversity Impact Assessment	<a href="https://screening.environment.gov.za/ScreeningDownloads/AssessmentProtocols/Gazetted_Aquatic_Biodiversity_Assessment_Protocols.pdf">https://screening.environment.gov.za/ScreeningDownloads/AssessmentProtocols/Gazetted_Aquatic_Biodiversity_Assessment_Protocols.pdf</a>
6	Hydrology Assessment	<a href="https://screening.environment.gov.za/ScreeningDownloads/AssessmentProtocols/Gazetted_General_Requirement_Assessment_Protocols.pdf">https://screening.environment.gov.za/ScreeningDownloads/AssessmentProtocols/Gazetted_General_Requirement_Assessment_Protocols.pdf</a>
7	Traffic Impact Assessment	<a href="https://screening.environment.gov.za/ScreeningDownloads/AssessmentProtocols/Gazetted_General_Requirement_Assessment_Protocols.pdf">https://screening.environment.gov.za/ScreeningDownloads/AssessmentProtocols/Gazetted_General_Requirement_Assessment_Protocols.pdf</a>
8	Socio-Economic Assessment	<a href="https://screening.environment.gov.za/ScreeningDownloads/AssessmentProtocols/Gazetted_General_Requirement_Assessment_Protocols.pdf">https://screening.environment.gov.za/ScreeningDownloads/AssessmentProtocols/Gazetted_General_Requirement_Assessment_Protocols.pdf</a>
9	Ambient Air Quality Impact Assessment	<a href="https://screening.environment.gov.za/ScreeningDownloads/AssessmentProtocols/Gazetted_General_Requirement_Assessment_Protocols.pdf">https://screening.environment.gov.za/ScreeningDownloads/AssessmentProtocols/Gazetted_General_Requirement_Assessment_Protocols.pdf</a>
10	Plant Species Assessment	<a href="https://screening.environment.gov.za/ScreeningDownloads/AssessmentProtocols/Gazetted_Plant_Species_Assessment_Protocols.pdf">https://screening.environment.gov.za/ScreeningDownloads/AssessmentProtocols/Gazetted_Plant_Species_Assessment_Protocols.pdf</a>
11	Animal Species Assessment	<a href="https://screening.environment.gov.za/ScreeningDownloads/AssessmentProtocols/Gazetted_Animal_Species_Assessment_Protocols.pdf">https://screening.environment.gov.za/ScreeningDownloads/AssessmentProtocols/Gazetted_Animal_Species_Assessment_Protocols.pdf</a>

# Results of the environmental sensitivity of the proposed area.

The following section represents the results of the screening for environmental sensitivity of the proposed site for relevant environmental themes associated with the project classification. It is the duty of the EAP to ensure that the environmental themes provided by the screening tool are comprehensive and complete for the project. Refer to the disclaimer.

## MAP OF RELATIVE AGRICULTURE THEME SENSITIVITY



Very High sensitivity	High sensitivity	Medium sensitivity	Low sensitivity
X			

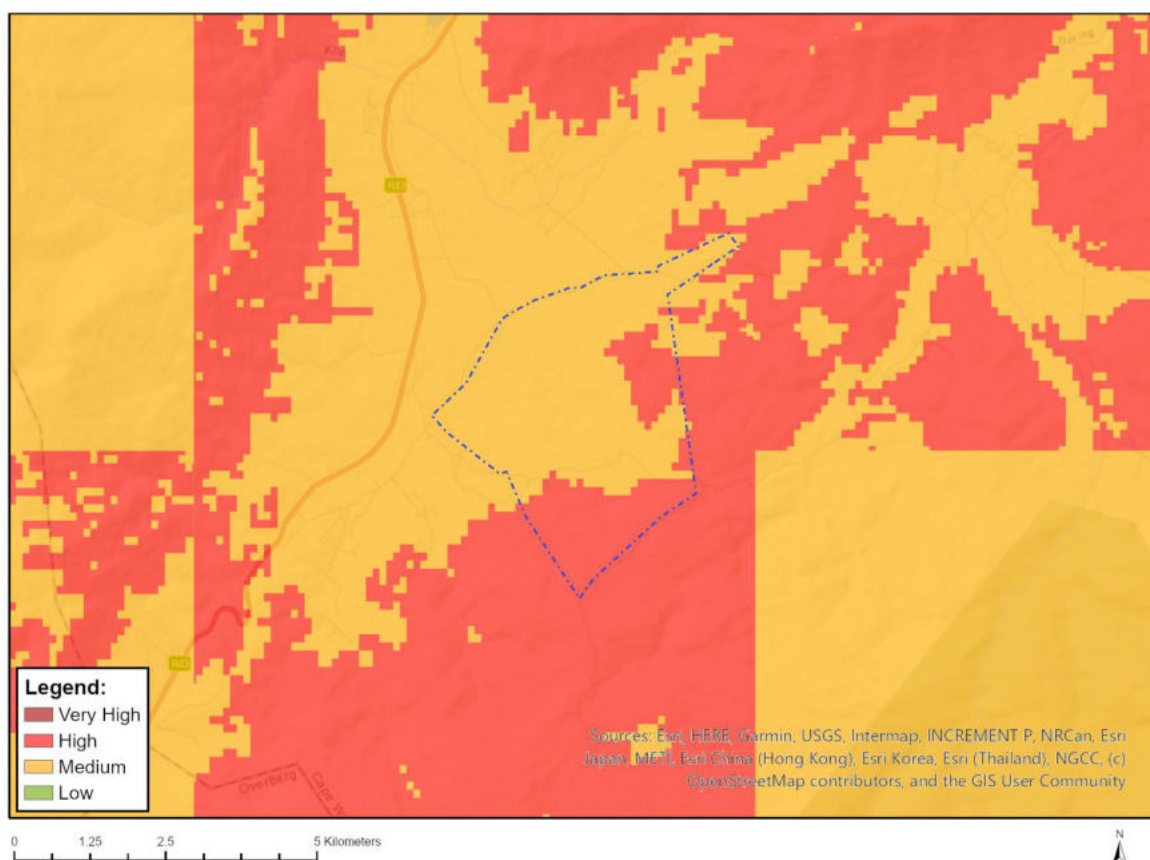
### Sensitivity Features:

Sensitivity	Feature(s)
High	Rainfed Annual Crop Cultivation / Planted Pastures
High	08. Moderate
High	09. Moderate-High
Low	02. Very low
Low	03. Low-Very low
Low	04. Low-Very low
Low	05. Low
Medium	06. Low-Moderate
Medium	07. Low-Moderate
Very High	Horticulture



Very High	Drooge Riviersberg PAA
Very High	Kwaggaskloof Dam PAA

## MAP OF RELATIVE ANIMAL SPECIES THEME SENSITIVITY



Where only a sensitive plant unique number or sensitive animal unique number is provided in the screening report and an assessment is required, the environmental assessment practitioner (EAP) or specialist is required to email SANBI at [eiadatarequests@sanbi.org.za](mailto:eiadatarequests@sanbi.org.za) listing all sensitive species with their unique identifiers for which information is required. The name has been withheld as the species may be prone to illegal harvesting and must be protected. SANBI will release the actual species name after the details of the EAP or specialist have been documented.

Very High sensitivity	High sensitivity	Medium sensitivity	Low sensitivity
	X		

### Sensitivity Features:

Sensitivity	Feature(s)
High	Aves-Circus maurus
Medium	Aves-Sagittarius serpentarius
Medium	Aves-Aquila verreauxii
Medium	Aves-Sarothrura affinis
Medium	Insecta-Chrysoritis endymion
Medium	Invertebrate-Conocephalus peringueyi
Medium	Invertebrate-Brinckiella aptera
Medium	Invertebrate-Aneuryphymus montanus



MAP OF RELATIVE AQUATIC BIODIVERSITY THEME SENSITIVITY

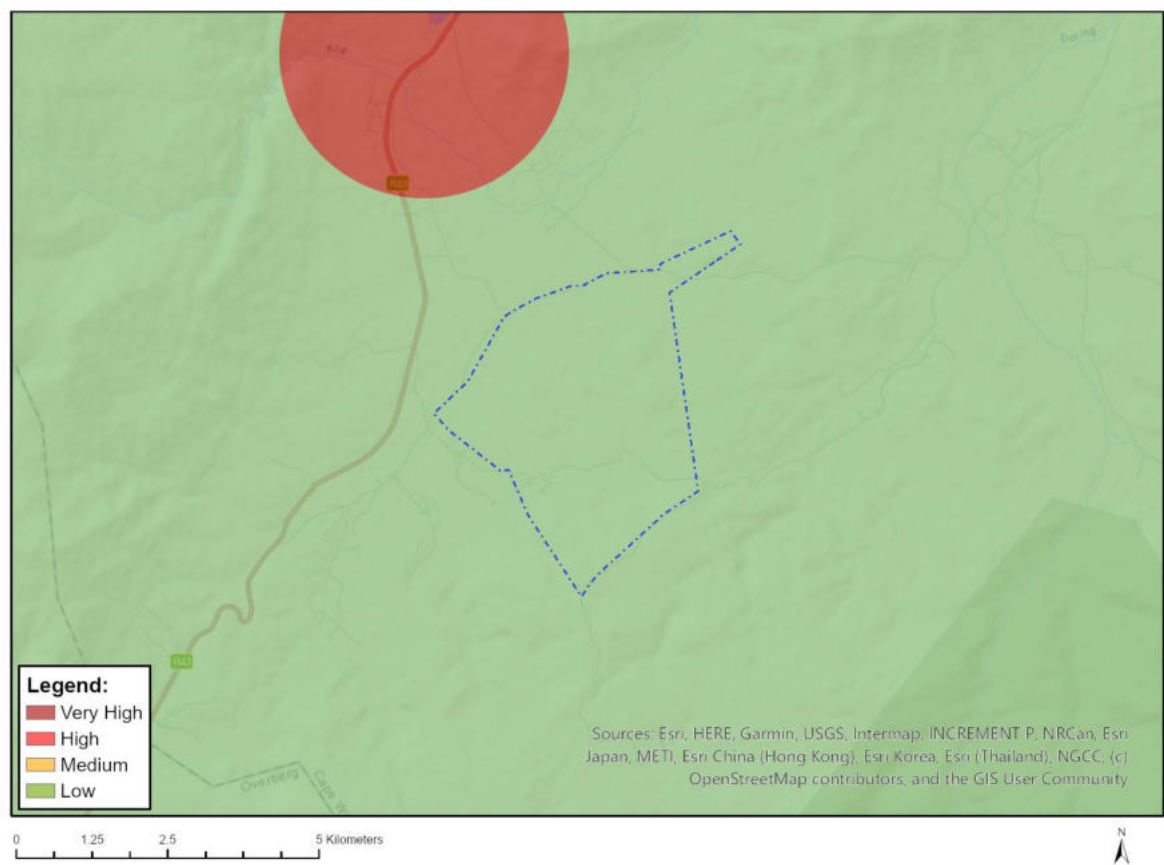


Very High sensitivity	High sensitivity	Medium sensitivity	Low sensitivity
X			

Sensitivity Features:

Sensitivity	Feature(s)
Low	Low Sensitivity
Very High	ESA 1: Aquatic

# MAP OF RELATIVE ARCHAEOLOGICAL AND CULTURAL HERITAGE THEME SENSITIVITY



Very High sensitivity	High sensitivity	Medium sensitivity	Low sensitivity
			X

## Sensitivity Features:

Sensitivity	Feature(s)
Low	Low Sensitivity

MAP OF RELATIVE CIVIL AVIATION THEME SENSITIVITY



Very High sensitivity	High sensitivity	Medium sensitivity	Low sensitivity
			X

Sensitivity Features:

Sensitivity	Feature(s)
Low	Low sensitivity

MAP OF RELATIVE DEFENCE THEME SENSITIVITY



Very High sensitivity	High sensitivity	Medium sensitivity	Low sensitivity
			X

Sensitivity Features:

Sensitivity	Feature(s)
Low	Low Sensitivity

MAP OF RELATIVE PALEONTOLOGY THEME SENSITIVITY

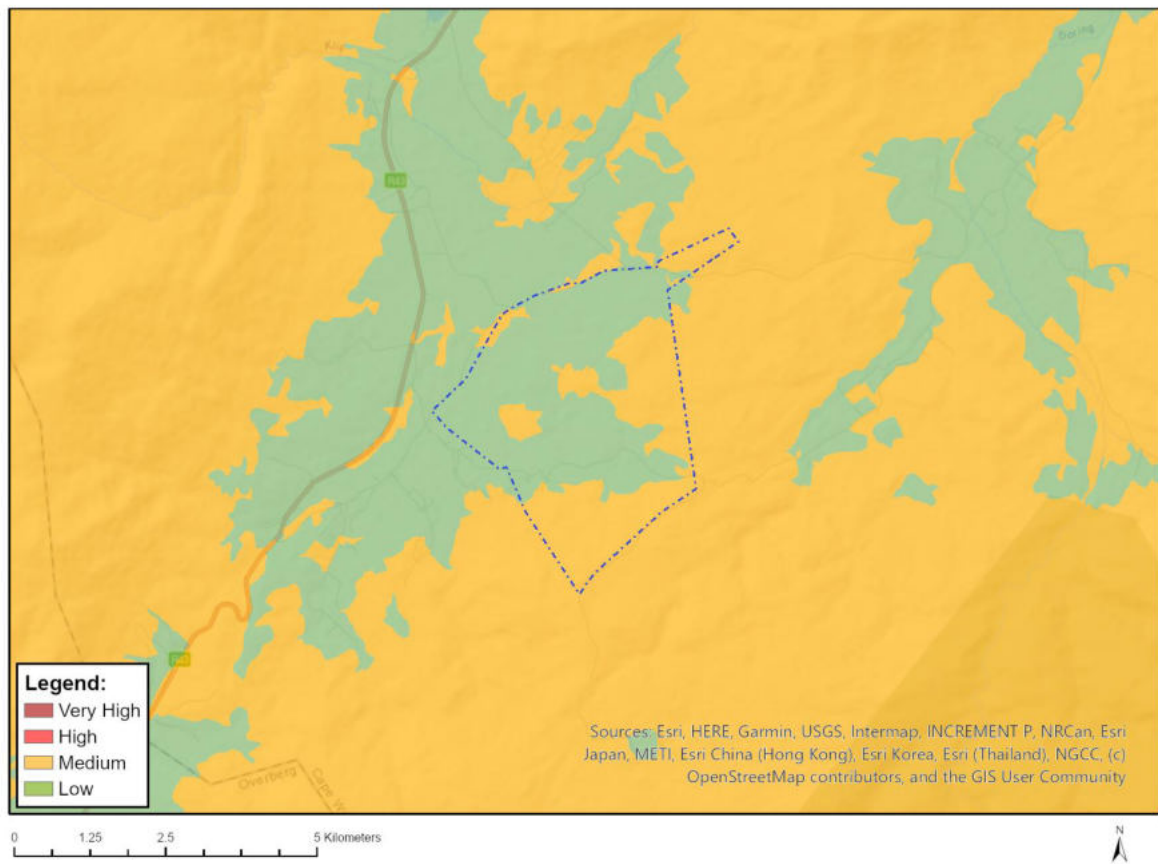


Very High sensitivity	High sensitivity	Medium sensitivity	Low sensitivity
X			

Sensitivity Features:

Sensitivity	Feature(s)
High	Features with a High paleontological sensitivity
Medium	Features with a Medium paleontological sensitivity
Very High	Features with a Very High paleontological sensitivity

## MAP OF RELATIVE PLANT SPECIES THEME SENSITIVITY



Where only a sensitive plant unique number or sensitive animal unique number is provided in the screening report and an assessment is required, the environmental assessment practitioner (EAP) or specialist is required to email SANBI at [eiadatarequests@sanbi.org.za](mailto:eiadatarequests@sanbi.org.za) listing all sensitive species with their unique identifiers for which information is required. The name has been withheld as the species may be prone to illegal harvesting and must be protected. SANBI will release the actual species name after the details of the EAP or specialist have been documented.

Very High sensitivity	High sensitivity	Medium sensitivity	Low sensitivity
		X	

### Sensitivity Features:

Sensitivity	Feature(s)
Low	Low Sensitivity
Medium	Stayneria neilii
Medium	Lampranthus filicaulis
Medium	Lampranthus leptaleon
Medium	Lampranthus scaber
Medium	Lampranthus spiniformis
Medium	Lampranthus stenopetalus
Medium	Sceletium varians
Medium	Erepsia polita
Medium	Erepsia villiersii
Medium	Ruschia diversifolia
Medium	Ruschia schollii
Medium	Amphithalea ericifolia subsp. scoparia



Medium	<i>Amphithalea bowiei</i>
Medium	<i>Liparia capitata</i>
Medium	<i>Aspalathus acanthoclada</i>
Medium	<i>Aspalathus aculeata</i>
Medium	<i>Aspalathus muraltioides</i>
Medium	<i>Otholobium</i> sp. nov. (Stirton & Zantovska 11281 NBG)
Medium	<i>Rafnia lancea</i>
Medium	<i>Brunia latebracteata</i>
Medium	<i>Protea burchellii</i>
Medium	<i>Protea longifolia</i>
Medium	<i>Protea restionifolia</i>
Medium	<i>Paranomus adiantifolius</i>
Medium	<i>Spatalla propinqua</i>
Medium	<i>Serruria stellata</i>
Medium	<i>Serruria williamsii</i>
Medium	<i>Phyllopodium alpinum</i>
Medium	Sensitive species 56
Medium	<i>Geissorhiza erosa</i>
Medium	<i>Sparaxis maculosa</i>
Medium	<i>Freesia fucata</i>
Medium	<i>Ixia erubescens</i>
Medium	<i>Ixia vanzijliae</i>
Medium	<i>Ixia atrandra</i>
Medium	<i>Ixia patens</i>
Medium	Sensitive species 157
Medium	Sensitive species 650
Medium	Sensitive species 1140
Medium	Sensitive species 44
Medium	<i>Oxalis camelopardalis</i>
Medium	<i>Oxalis meisneri</i>
Medium	<i>Erica floccifera</i>
Medium	<i>Erica modesta</i>
Medium	<i>Erica jonasiana</i>
Medium	Sensitive species 259
Medium	<i>Centella dolichocarpa</i>
Medium	<i>Centella thesioides</i>
Medium	<i>Elegia extensa</i>
Medium	<i>Hypodiscus rugosus</i>
Medium	<i>Restio pumilis</i>
Medium	Sensitive species 1105
Medium	Sensitive species 1063
Medium	<i>Pterygodium cruciferum</i>
Medium	<i>Heliophila tricuspidata</i>
Medium	<i>Lachnaea rupestris</i>
Medium	<i>Anaxeton hirsutum</i>
Medium	<i>Helichrysum incarnatum</i>
Medium	<i>Agathosma leptospermoides</i>
Medium	<i>Adenandra villosa</i> subsp. <i>apiculata</i>
Medium	<i>Euchaetis pungens</i>
Medium	<i>Cliffortia scandens</i>
Medium	Sensitive species 574
Medium	Sensitive species 1004
Medium	<i>Phylica stenantha</i>
Medium	<i>Lampranthus debilis</i>
Medium	<i>Drosanthemum striatum</i>
Medium	<i>Aspalathus recurva</i>
Medium	<i>Lotononis rigida</i>
Medium	Sensitive species 593
Medium	Sensitive species 521
Medium	Sensitive species 599

