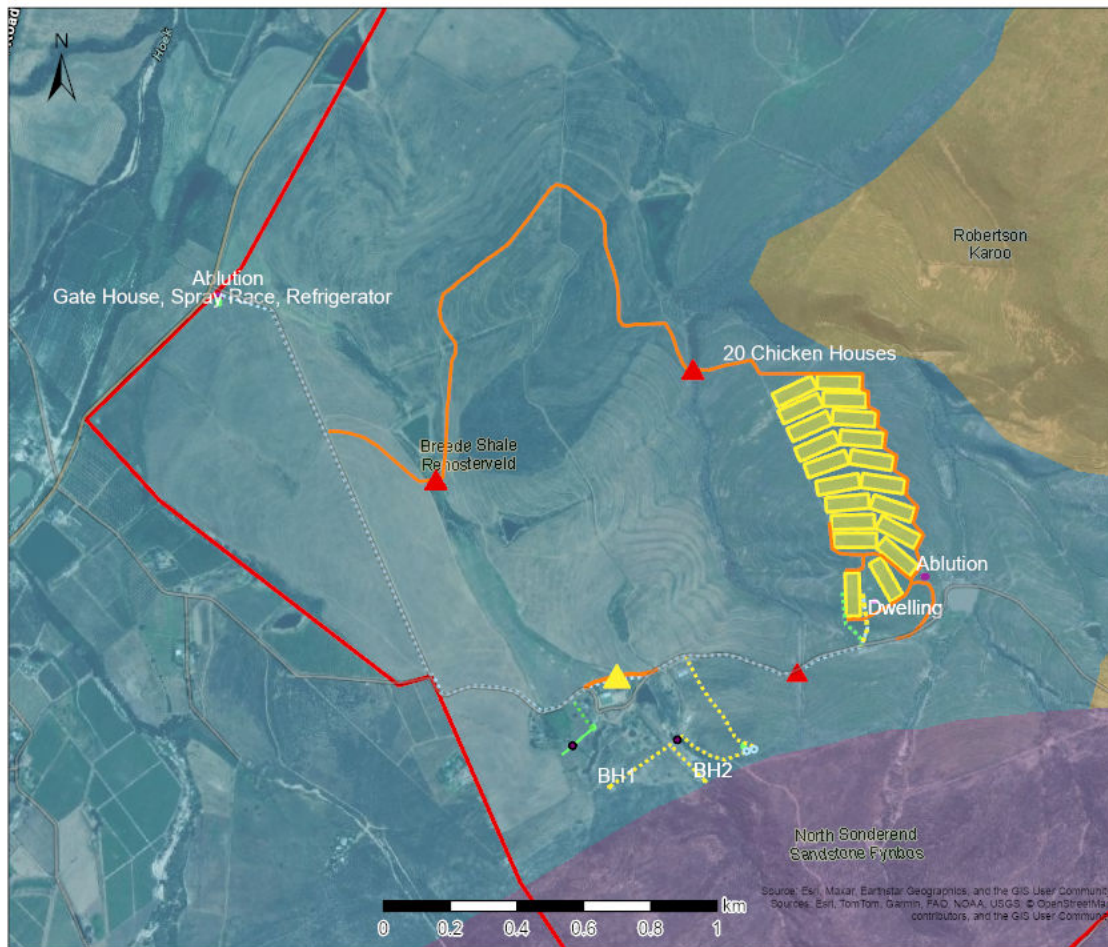


Kleinfontein Broiler Facility: Vegetation Type



Legend

VEGMAP 2024 (beta)

Map Code

FFs13

FRs8

SKv7

Map Center: Lon: 19°23'2.4"E
Lat: 33°54'50.4"S

Scale: 1:18,056

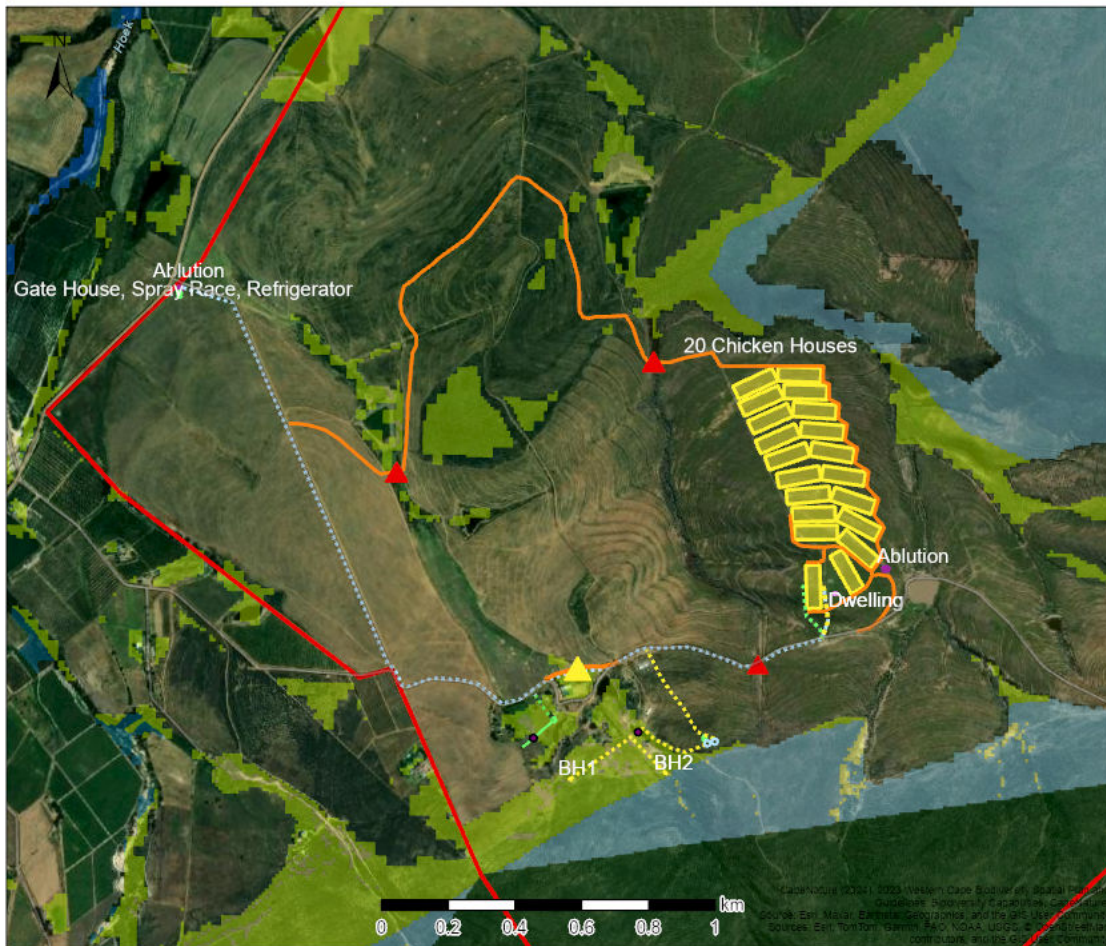
Date created: 2025/22/10



Western Cape
Government
FOR YOU

Source: Esri, Maxar, Earthstar Geographics, and the GIS User Community
Sources: Esri, TomTom, Garmin, FAO, NOAA, USGS, © OpenStreetMap contributors, and the GIS User Community

Kleinfontein Broiler Facility: CBAs & ESAs



Legend

- Protected Areas
- Ecological Support Areas (Restore)**
 - ESA 2: Restore from other land use
- Ecological Support Areas**
 - ESA 1: Aquatic
- Critical Biodiversity Areas (Degraded)**
 - CBA2: Aquatic
 - CBA2: Terrestrial
- Critical Biodiversity Areas**
 - CBA: River
 - CBA: Terrestrial
 - CBA: Wetland

Map Center: Lon: 19°23'6.7"E
Lat: 33°54'51.1"S

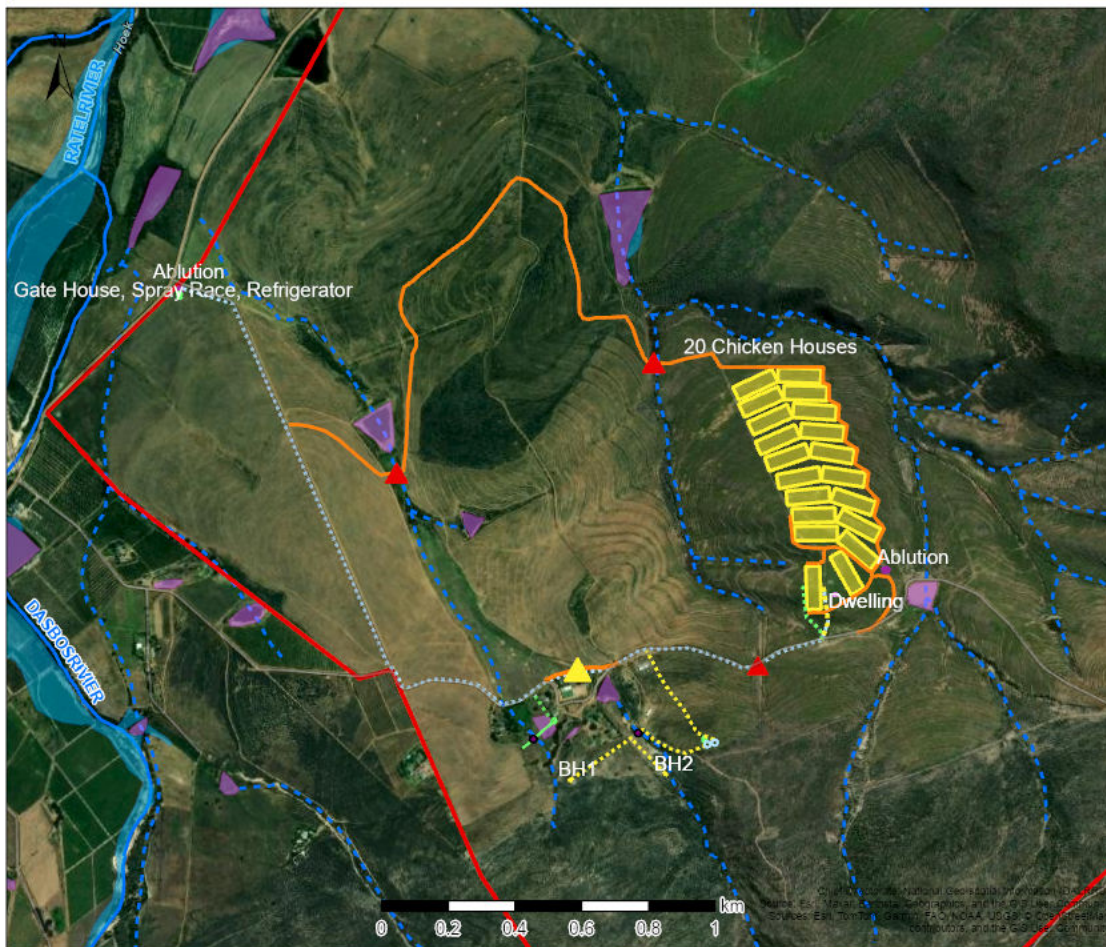
Scale: 1:18,056

Date created: 2025/22/10



Western Cape Government
FOR YOU

Kleinfontein Broiler Facility: Aquatics



Legend

Wetlands (NFEPA)

Artificial

Natural

Rivers

Non-Perennial

Rivers

Perennial

Map Center: Lon: 19°23'6.7"E
Lat: 33°54'51.1"S

Scale: 1:18,056

Date created: 2025/22/10



Western Cape
Government
FOR YOU