

1. Boundary Formalisation

Sections of the original 1910 Cemetery boundary (marked as Erf 15349) can be formalised to symbolise the erf boundary. Packed stone can define these edges, as well as 'entrances' and 'exits'. Some entrances will be symbolic (south & west), while others will be functional. Wrought iron or wooden gates can be used symbolically and left open where applicable. Spread out shrubs or small 'organic' shaped trees (e.g. Wild Olive) can be used between the packed stone walls to further visually highlight the Erf boundary.
2. Pathways

Bordered by gum poles and filled with 13mm crushed stone aggregate ('klippies'), similar to other areas on campus.
3. Seating

Concrete benches can be strategically placed within the landscaped areas and around the Memorial Circle on the crushed stone aggregate, or a low, stabilised packed stone wall can encircle the memorial base, doubling as seating. Entrances and exits within the stone wall will ensure ease of access.
4. Information Boards

Cemetery Name Board: The "Hardekraaltjie Cemetery" name board should be positioned at the entrance to the site.
Interpretation Boards: Approximately five information/interpretation boards are proposed at strategic locations to tell the story of Hardekraaltjie Cemetery.
5. Central memorial area

Can be made using pieces of shells, old crockery, and stones/bricks (items used to depict graves in old cemeteries) to create a mosaic floor or base. A memorial remembrance stone/symbol will be placed in the centre of the base. This stone slab will include a list of names of those buried at Hardekraaltjie, with space for future names. The recommended opening line is "Beneath this garden lies the Hardekraaltjie Cemetery," with the final words "May their memory be blessed" translated into Khoisan.
6. Soft landscaping

The vegetation within the area was originally Cape Flats Sandstone Fynbos. Local, indigenous vegetation to be used throughout all new landscaped areas. Include local medicinal plants and herbs used by the Khoisan and broader communities within the Landscaping Area.
7. Grave clusters

Areas with large grave clusters to remain as is. These areas can be seeded using indigenous grass or vegetation mixes. Weeding can take place in these areas, but no planting is to take place.



This drawing is not to be scaled. Any measurements taken from information which is not dimensioned on the electronic copy are at the risk of the recipient.

The correctness and completeness of the information issued is to be verified on site by the appointed consultant(s) before the execution of works. Any discrepancies are to be reported to Stellenbosch University Facilities Management (SUFM) Development Planning and Design (DPD) immediately.

All rights reserved. No part of this drawing may be reproduced or transmitted in any form or by any means without written permission from SUFM DPD

Facilities Management building
Hammanhand Road, Stellenbosch 7600
+27 21 808 4858 or planning @sun.ac.za



CONSULTANT INFORMATION

cell: 082 740 8046
tel: 028 312 1734
paul@phsconsulting.co.za
www.phsconsulting.co.za

REVISION SCHEDULE		
RevID	Change Name	Date
0	Public comments	2024.10.11
A	Phased memorialisation	2025.05.01

PROJECT STATUS
For Information

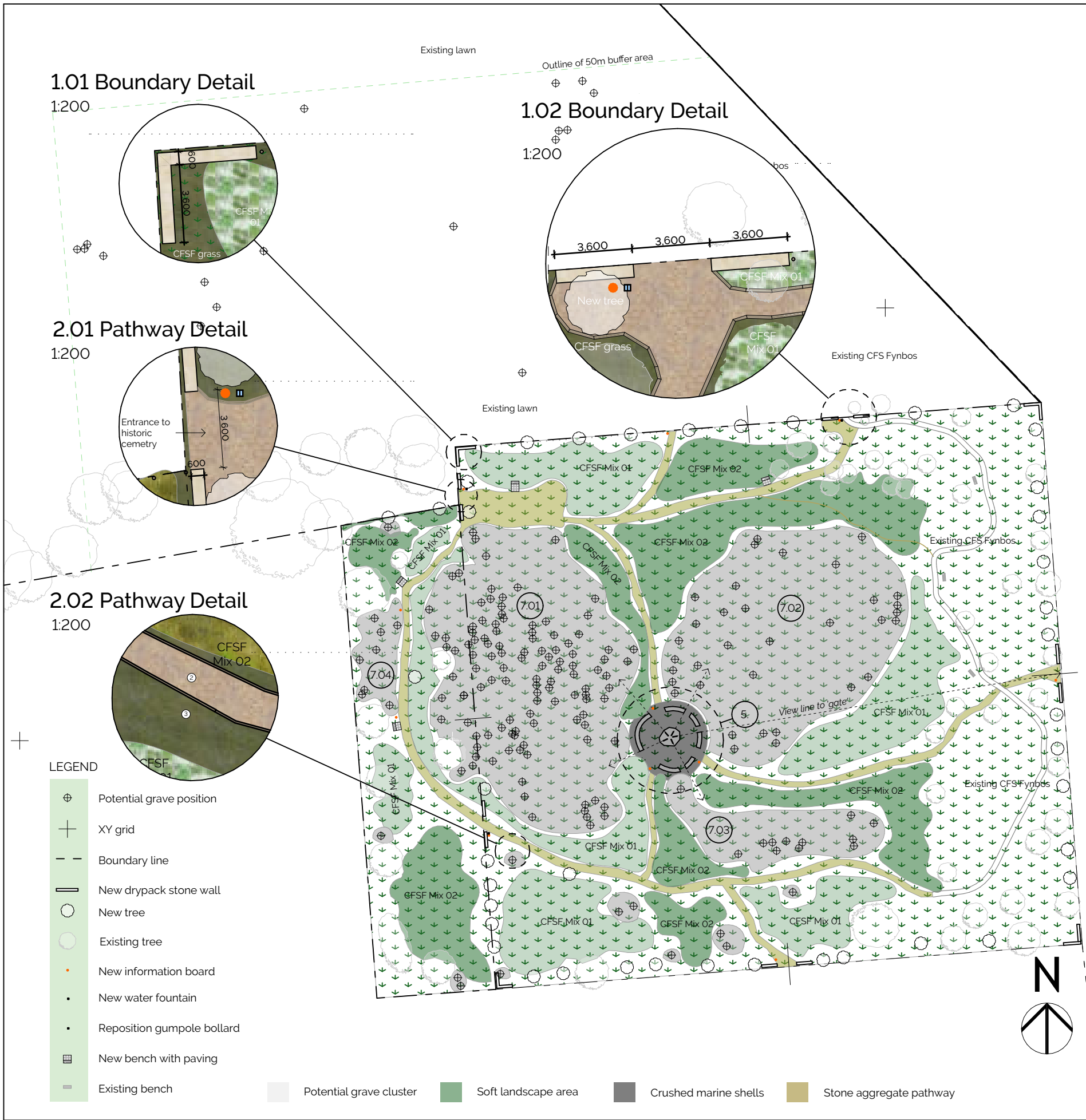
PROJECT NUMBER
HKM

PROJECT DESCRIPTION
Proposed memorialisation of the Hardekraaltjie cemetery site, as part of Stellenbosch University Visual Redress, Tygerberg Campus.

DRAWING NAME
Proposed layout

DRAWING NO			
HKM_Grounds_Zz_70_60.4			
DATE	PAGE SIZE	DRAWN BY	CHECKED BY
2025/09/05	A3	mcw	mp
FILE PATH			
F:\Assets\Tygerberg Campus\Grounds\Tygerberg.pln			

1. Boundary Formalisation
Sections of the original 1910 Cemetery boundary (marked as Erf 15349) can be formalised to symbolise the erf boundary. Packed stone can define these edges, as well as 'entrances' and 'exits'. Some entrances will be symbolic (south & west), while others will be functional. Wrought iron or wooden gates can be used symbolically and left open where applicable. Spread out shrubs or small 'organic' shaped trees (e.g. Wild Olive) can be used between the packed stone walls to further visually highlight the Erf boundary.
2. Pathways
Bordered by gum poles and filled with 13mm crushed stone aggregate ('klippies'), similar to other areas on campus.
3. Seating
Concrete benches can be strategically placed within the landscaped areas and around the Memorial Circle on the crushed stone aggregate, or a low, stabilised packed stone wall can encircle the memorial base, doubling as seating. Entrances and exits within the stone wall will ensure ease of access.
4. Information Boards
Cemetery Name Board: The "Hardekraaltjie Cemetery" name board should be positioned at the entrance to the site.
Interpretation Boards: Approximately five information/interpretation boards are proposed at strategic locations to tell the story of Hardekraaltjie Cemetery.
5. Central memorial area
Can be made using pieces of shells, old crockery, and stones/bricks (items used to depict graves in old cemeteries) to create a mosaic floor or base. A memorial remembrance stone/symbol will be placed in the centre of the base. This stone slab will include a list of names of those buried at Hardekraaltjie, with space for future names. The recommended opening line is "Beneath this garden lies the Hardekraaltjie Cemetery," with the final words "May their memory be blessed" translated into Khoisan.
6. Soft landscaping
The vegetation within the area was originally Cape Flats Sandstone Fynbos. Local, indigenous vegetation to be used throughout all new landscaped areas. Include local medicinal plants and herbs used by the Khoisan and broader communities within the Landscaping Area.
7. Grave clusters
Areas with large grave clusters to remain as is. These areas can be seeded using indigenous grass or vegetation mixes. Weeding can take place in these areas, but no planting is to take place.



This drawing is not to be scaled. Any measurements taken from information which is not dimensioned on the electronic copy are at the risk of the recipient.

The correctness and completeness of the information issued is to be verified on site by the appointed consultant(s) before the execution of works. Any discrepancies are to be reported to Stellenbosch University Facilities Management (SUFM) Development Planning and Design (DPD) immediately.

All rights reserved. No part of this drawing may be reproduced or transmitted in any form or by any means without written permission from SUFM DPD

Facilities Management building
Hammanhand Road, Stellenbosch 7600
+27 21 808 4858 or planning @sun.ac.za



CONSULTANT INFORMATION



REVISION SCHEDULE

RevID	Change Name	Date
-------	-------------	------

PROJECT STATUS

For Information

PROJECT NUMBER

HKM

PROJECT DESCRIPTION

Proposed memorialisation of the Hardekraaltjie cemetery site, as part of Stellenbosch University Visual Redress, Tygerberg Campus.

DRAWING NAME

Proposed detailed layout

DRAWING NO

HKM_Grounds_Zz_70_60.5

DATE	PAGE SIZE	DRAWN BY	CHECKED BY
2025/09/05	A3	mcw	mp

FILE PATH

F:\Assets\Tygerberg Campus\Grounds\Tygerberg.pln



Soft Landscape Design Features - The original vegetation of the area is characterized by Cape Flats Sandstone Fynbos (CFSF). In the new landscaped zones, the proposal is to incorporate local indigenous plants, including medicinal herbs and plants historically utilized by the Khoisan and broader communities.

1. Indigenous Plant Integration: Utilize local medicinal plants alongside other native vegetation throughout all landscaped areas, promoting biodiversity and cultural heritage.
2. Organic Tree Placement: Introduce organically shaped shrubs or small trees, such as Wild Olive, strategically placed between the packed stone walls to enhance the visual definition of the erf boundary.
3. Potential Graves: Preserve areas with potential grave clusters in their existing state. These zones can be enriched through seeding with indigenous grass and vegetation mixes. Weeding will be conducted, but no additional planting will be introduced in these areas to maintain their integrity.
4. Defined Spaces for Interaction: The landscaped area on Erf 24602 will be bordered with shrubs or small trees, as outlined in point 2, creating a clear delineation between the recreational sports areas and the cemetery. This design will encourage visitors to utilize designated pathways, promoting respectful engagement with both spaces.

This drawing is not to be scaled. Any measurements taken from information which is not dimensioned on the electronic copy are at the risk of the recipient.

The correctness and completeness of the information issued is to be verified on site by the appointed consultant(s) before the execution of works. Any discrepancies are to be reported to Stellenbosch University Facilities Management (SUFM) Development Planning and Design (DPD) immediately.

All rights reserved. No part of this drawing may be reproduced or transmitted in any form or by any means without written permission from SUFM DPD

Facilities Management Building
Hammanhand Road, Stellenbosch 7600
+27 21 808 4858 or planning @sun.ac.za



CONSULTANT INFORMATION



cell: 082 740 8046
tel: 028 312 1734
paul@phsconsulting.co.za
www.phsconsulting.co.za

REVISION SCHEDULE

RevID	Change Name	Date
0	Public comments	2024.10.11

PROJECT STATUS
For Information .

PROJECT NUMBER

HKM

PROJECT DESCRIPTION

Proposed memorialisation of the Hardekraaljie cemetery site, as part of Stellenbosch University Visual Redress, Tygerberg Campus, Parow.

DRAWING NAME

Soft Landscape

DRAWING NO			
HKM_Grounds_Zz_70_90.1			
DATE	PAGE SIZE	DRAWN BY	CHECKED BY
2024.10.11	A3	mcw	mp
FILE PATH			
F:\Assets\Tygerberg Campus\Grounds\L_Landscape Architect\Tygerberg.pln			



Code	Plant name	Type	Common name
AGI	Agathosma imbricata	low shrub	sand buchu
AIS	Aizoon sarmentosum	low shrub	
ANA	Anthrospermum aethiopicum	low shrub	
ARD	Aristea dichotoma	geophyte	
ASC	Aspalathus callosa	low shrub	Rooibos bush(family)
ASH	Aspalathus hispida	low shrub	
ASQ	Aspalathus quinquefolia subsp quinquefolia	low shrub	
	Aspalathus sericea	low shrub	
	Aspalathus spinosa subsp spinosa	low shrub	Rooibos tea plant
	Aspalathus ternata	low shrub	
	Aspalathus variegata	low shrub	
ASC	Asparagus capensis	low shrub	
ATC	Athanasia capitata	low shrub	Cape flats gorse
	Babiana ambigua	geophyte	
	Babiana villosula	geophyte	
BER	Berkheya rigida	herbs	
BEA	Berzelia arbrotanoides	low shrub	redleg buttonbush
BRO	Brunsvigia orientalis	geophyte	
CAI	Calopsis impolita	restio	Rough broom reed
MIX 1	Carpobrotus acinaformis	succulent	
CHA	Chasmanthe aethiopica	geophyte	cobra lily
CHI	Chrysanthemoides incana	low shrub	Vaal bietou
	Chrysanthemoides monolifera	shrub tall	Tickberry
CLE	Cliffortia ericifolia	low shrub	
CLER	Cliffortia eriocephalina	low shrub	
	Cliffortia falcata	low shrub	
	Cliffortia juniperina	low shrub	
CLO	Cliffortia obcordata	shrub tall	
	Cliffortia polygonifolia	low shrub	
	Conyza pinnatifida	perennial	
CRO	Crassula ovata	succulent	Jade plant
	Crassula ovata Pink Joy		
DIP	Diastella proteoides	low shrub	flats silkypuff
	Diosma hirsuta	low shrub	wild buchu
	Diosma oppositifolia	low shrub	bitter buchu
	Edmondia sesamoides	herbs	
	Ehrharta villosa var. villosa	grass, restio	
	Elegia filacea	grass, restio	
	Elegia juncea	grass, restio	
	Elegia microcarpa	grass, restio	
	Elegia nuda	grass, restio	
ELT	Elegia tectorum	grass, restio	Dakriet
	Elegia tectorum Fish Hoek		
	Erica articularis	low shrub	
	Erica axillaris	low shrub	
	Erica capitata	low shrub	
	Erica corifolia	low shrub	
	Erica ferrea	low shrub	
	Erica imbricata	low shrub	
	Erica lasciva	low shrub	
ERM	Erica mammosa	low shrub	nine pin heath
	Erica margaretacea	low shrub	
	Erica mucosa	low shrub	
	Erica plumosa	low shrub	
	Erica pulchella	low shrub	
	Erica pyramidalis	low shrub	
	Erica turgida	low shrub	
	Erica verticillata Harry Wood	low shrub	

This drawing is not to be scaled. Any measurements taken from information which is not dimensioned on the electronic copy are at the risk of the recipient.

The correctness and completeness of the information issued is to be verified on site by the appointed consultant(s) before the execution of works. Any discrepancies are to be reported to Stellenbosch University Facilities Management (SUFM) Development Planning and Design (DPD) immediately.

All rights reserved. No part of this drawing may be reproduced or transmitted in any form or by any means without written permission from SUFM DPD

Facilities Management Building
Hammanshand Road, Stellenbosch 7600
+27 21 808 4858 or planning @sun.ac.za



CONSULTANT INFORMATION



REVISION SCHEDULE

RevID	Change Name	Date
0	Public comments	2024.10.11

PROJECT STATUS

For Information .

PROJECT NUMBER

HKM

PROJECT DESCRIPTION

Proposed memorialisation of the Hardekraaljie cemetery site, as part of Stellenbosch University Visual Redress, Tygerberg Campus, Parow.

DRAWING NAME

Biodome CFSF
Plant list 01

DRAWING NO

HKM_Grounds_Zz_70_90.2

DATE	PAGE SIZE	DRAWN BY	CHECKED BY
2024.10.11	A3	mcw	mp

FILE PATH
F:\Assets\Tygerberg Campus\Grounds\L_Landscape Architect\Tygerberg.pln



Code	Plant name	Type	Common name
EVA	Erica verticillata African fanfare	low shrub	Wild rosemary
EVAP	Erica verticillata African phoenix	low shrub	
EVB	Erica verticillata Belvedere	low shrub	
	Erica verticillata Cherise	low shrub	
EVVG	Erica verticillata Dr Violet Gray	low shrub	
EVT	Erica verticillata Trescoe Abby	low shrub	
ERA	Eriocephalus africanus subsp africanus	low shrub	
	Galenia africana	low shrub	
MIX 1	Geissorhiza pinnatifida	geophyte	
	Geissorhiza tenella	geophyte	
GLC	Gladiolus carmineus	geophyte	blister leaf Sandkalossie, Bergnaeltjie
GKC	Gladiolus carneus	geophyte	
	Gnidia spicata	low shrub	
	Gnidia subulata	low shrub	
MIX 1	Haemanthus coccineus	geophyte	
HEC	Helichrysum cymosum	low shrub	
	Helichrysum tinctum	low shrub	
HEP	Hermannia pinnata	groundcover	
	Hordeum capense	grass, restio	
	Hyodiscus aristatus	grass, restio	
ISC	Indigofera procumbens	perennial	
	Ischyrolepis capensis	grass, restio	
	Ischyrolepis paludosa	grass, restio	
JUC	Juncus capensis	grass, restio	Clusterleaf Brightfig
KNV	Knowltonia vesicatoria	shrub tall	
MIX 2	Lachanalia rubida	geophyte	cape flats conebush Common sunshine
LAG	Lachnaea grandiflora		
LAE	Lampranthus emarginatus	low shrub	
LAG	Lampranthus glaucus	succulent	
LAR	Lampranthus reptans	succulent	
LEF	Leucadendron floridum	low shrub	
LEL	Leucadendron levisanus	low shrub	
LES	Leucadendron salignum	shrub tall	
	cone bush		
LESC	Leucadendron salignum candles	low shrub	green snakeskin
LESRD	Leucadendron salignum red Devil	low shrub	
LESD	Leucadendron salignum Sunshine Devil	shrub tall	
LEYD	Leucadendron salignum Yellow devil	low shrub	
LEH	Leucospermum hyprophylllocarpodendron	shrub tall	
	pincushion		
	subsp. Canaliculatum		
	Liparia graminifolia	low shrub	
	Metalasia adunca	low shrub	
MED	Metalasia densa	shrub tall	
MEP	Metalasia pulchella (pulcherrima??)	low shrub	waxberry
MIX 2	Micranthus alopercuroides	geophyte	
MIX 1	MIX 1		
MOF	Moraea fugax	geophyte	
MOC	Morella cordifolia	shrub tall	
	Morella quercifolia	low shrub	
	Morella serrata	shrub tall	
	Nylandtia spinosa	shrub tall	
	Othonna heterophylla	succulent	
	Passerina corymbosa	shrub tall	
	Passerina ericoides	low shrub	xmas berry
	Passerina vulgaris	low shrub	
PEB	Pelargonium betulinum	low shrub	maagpynbossie

This drawing is not to be scaled. Any measurements taken from information which is not dimensioned on the electronic copy are at the risk of the recipient.

The correctness and completeness of the information issued is to be verified on site by the appointed consultant(s) before the execution of works. Any discrepancies are to be reported to Stellenbosch University Facilities Management (SUFM) Development Planning and Design (DPD) immediately.

All rights reserved. No part of this drawing may be reproduced or transmitted in any form or by any means without written permission from SUFM DPD

Facilities Management Building
Hammanshand Road, Stellenbosch 7600
+27 21 808 4858 or planning @sun.ac.za



CONSULTANT INFORMATION



cell: 082 740 8046
tel: 028 312 1734
paul@phsconsulting.co.za
www.phsconsulting.co.za

REVISION SCHEDULE

RevID	Change Name	Date
0	Public comments	2024.10.11

PROJECT STATUS
For Information .

PROJECT NUMBER

HKM

PROJECT DESCRIPTION

Proposed memorialisation of the Hardekraaljie cemetery site, as part of Stellenbosch University Visual Redress, Tygerberg Campus, Parow.

DRAWING NAME

Biodome CFSF
Plant list 02

DRAWING NO HKM_Grounds_Zz_70_90.3			
DATE 2024.10.11	PAGE SIZE A3	DRAWN BY mcw	CHECKED BY mp
FILE PATH F:\Assets\Tygerberg Campus\Grounds\L_Landscape Architect\Tygerberg.pln			



Code	Plant name	Type	Common Name
PEC	Pelargonium capitatum	low shrub	
	Pelargonium longifolium	geophyte	
	Pelargonium triste	low shrub	
	Pharnacceum lanatum	low shrub	
	Phylica cephalantha		
	Phylica ericoides	low shrub	
	Phylica parvifolia	low shrub	
PLS	Plecostachys polifolia	low shrub	
	Plecostachys serpyllifolia	low shrub	
	Polpoda capensis	low shrub	
PRB	Protea burchellii	shrub tall	
PRR	Protea red repens	shrub tall	Sugarbush
	Protea repens	shrub tall	Sugarbush
PRS	Protea scolymocephala	low shrub	Witskolie, thistle
	Protea scolymocephala		
PSP	Psoralea pinnata	shrub tall	fonteinbos, penwortel
PTT	Pterocelasrus tricuspidatus	shrub tall	candle berry
REB	Restio bifurcus	grass, restio	
REM	Restio micans	grass, restio	
REQ	Restio quadratus	grass, restio	vlakteriet
REQ	Restio quinquefarius	grass, restio	
RHL	Rhus laevigata	shrub tall	
	Rhus lucida	shrub tall	
	Roella ciliata	shrub tall	
RUM	Ruschia macowanii	succulent	
RUM	Ruschia multiflora	succulent	
RUT	Ruschia tumidula	succulent	
	Salvia africana-lutea	shrub tall	
SHE	Senecio halimifolius	low shrub	tabakbos
SEA	Serruria aemula	low shrub	strawberry spiderhead
	Serruria dicepiens	low shrub	
	Serruria fascifolia	low shrub	
	Serruria foeniculaceae	low shrub	common spiderhead
	Serruria furcellata	low shrub	
	Serruria glomerata	low shrub	
	Serruria trilopha	low shrub	
	Serruria variabilis	low shrub	
	Sparaxis villosa	geophyte	
	Spiloxene capensis	geophyte	
SPV	Sporobolus virginicus	grass, restio	
STC	Stilbe albiflora	low shrub	fly-catcher bush, vlieebos
STC	Stoebe cinerea	low shrub	
STP	Stoebe plumosa	low shrub	
	Struthiola striata		
SYV	Syncarpha vestita	low shrub	
THE	Thamnochortus erectus	grass, restio	
THP	Thamnochortus punctatus	grass, restio	
TRS	Trianoptiles solitaria	grass, restio	
TRST	Trichocephalus stipularis	low shrub	
TRA	Tritoniopsis antholyza	geophyte	
URA	Ursinia anthemoides	low shrub	
WAP	Wachendorfia paniculata	geophyte	
	Watsonia meriana	geophyte	
WIO	Wiborgia obcordata	shrub tall	
WII	Willdenowia incurvata	grass, restio	
WIS	Willdenowia sulcata	grass, restio	
ZAA	Zantedischis aethiopica	geophyte	

This drawing is not to be scaled. Any measurements taken from information which is not dimensioned on the electronic copy are at the risk of the recipient.

The correctness and completeness of the information issued is to be verified on site by the appointed consultant(s) before the execution of works. Any discrepancies are to be reported to Stellenbosch University Facilities Management (SUFM) Development Planning and Design (DPD) immediately.

All rights reserved. No part of this drawing may be reproduced or transmitted in any form or by any means without written permission from SUFM DPD

Facilities Management Building
Hammanshand Road, Stellenbosch 7600
+27 21 808 4858 or planning @sun.ac.za



CONSULTANT INFORMATION



cell: 082 740 8046
tel: 028 312 1734
paul@phsconsulting.co.za
www.phsconsulting.co.za

REVISION SCHEDULE

RevID	Change Name	Date
0	Public comments	2024.10.11

PROJECT STATUS

For Information .

PROJECT NUMBER

HKM

PROJECT DESCRIPTION

Proposed memorialisation of the Hardekraaljie cemetery site, as part of Stellenbosch University Visual Redress, Tygerberg Campus, Parow.

DRAWING NAME

Biodome CFSF
Plant list 03

DRAWING NO

HKM_Grounds_Zz_70_90.4

DATE	PAGE SIZE	DRAWN BY	CHECKED BY
2024.10.11	A3	mcw	mp

FILE PATH
F:\Assets\Tygerberg Campus\Grounds\L_Landscape Architect\Tygerberg.pln

This drawing is not to be scaled. Any measurements taken from information which is not dimensioned on the electronic copy are at the risk of the recipient.

The correctness and completeness of the information issued is to be verified on site by the appointed consultant(s) before the execution of works. Any discrepancies are to be reported to Stellenbosch University Facilities Management (SUFM) Development Planning and Design (DPD) immediately.

All rights reserved. No part of this drawing may be reproduced or transmitted in any form or by any means without written permission from SUFM DPD

Facilities Management Building
Hammanshand Road, Stellenbosch 7600
+27 21 808 4858 or planning @sun.ac.za



CONSULTANT INFORMATION



cell: 082 740 8046
tel: 028 312 1734
paul@phsconsulting.co.za
www.phsconsulting.co.za

REVISION SCHEDULE

RevID	Change Name	Date
0	Public comments	2024.10.11

PROJECT STATUS

For Information .

PROJECT NUMBER

HKM

PROJECT DESCRIPTION

Proposed memorialisation of the Hardekraaltjie cemetery site, as part of Stellenbosch University Visual Redress, Tygerberg Campus, Parow.

DRAWING NAME

Plan Section 03

DRAWING NO

HKM_Grounds_Zz_70_30.3

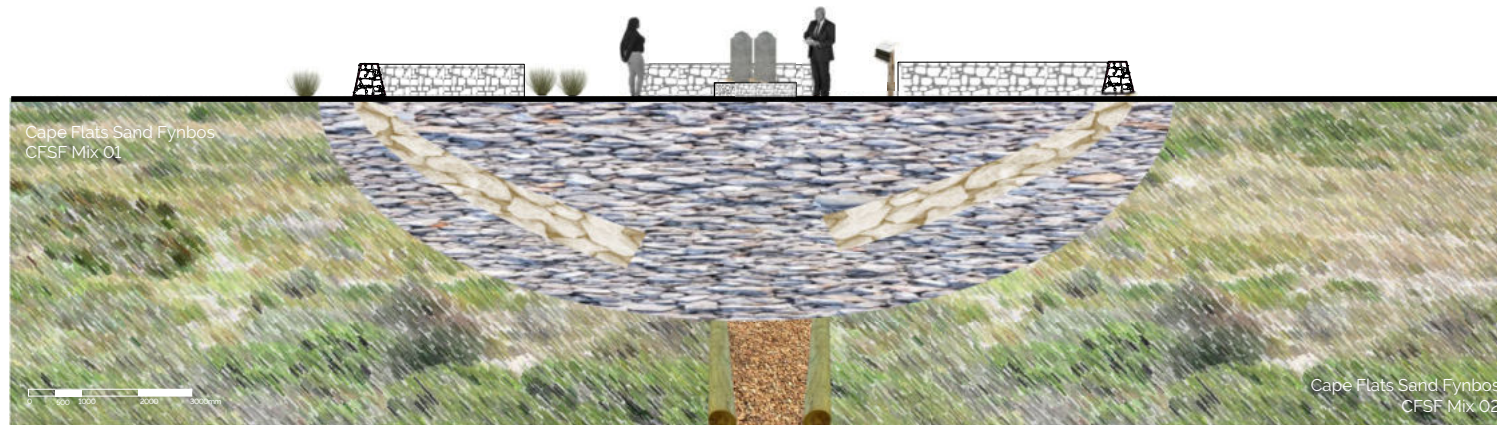
DATE	PAGE SIZE	DRAWN BY	CHECKED BY
2024.10.11	A3	mcw	mp

FILE PATH
F:\Assets\Tygerberg Campus\Grounds\NL_Landscape Architect\Tygerberg.pln



Plan Section 03 Symbolic entrance on south boundary

1. Boundary Formalisation'. Symbolic entrance with 600mm high packed stone wall (south & west), with wrought iron or wooden gates can be used symbolically and left open. Spread out shrubs or small 'organic' shaped trees (e.g. *Olea europaea* L. subsp. *africana* (Mill.) Common names: wild olive, olienhout (Afr.), mohlware (Nsotho, SSotho), umnquma (Zulu, Xhosa, Swati), mutlhwari (Venda), motlhwari (Tswana) can be used between the packed stone walls to further visually highlight the Erf boundary.
2. Pathways can be bordered by gum poles and filled with 13mm crushed stone aggregate ('kloppies'), similar to other areas on campus.
3. 600mm high packed stone wall at symbolic entrances and exits to double as seating.
4. Information/interpretation board to be proposed at strategic locations to tell the story of Hardekraaltjie Cemetery.



Plan Section 02 Remembrance stone central cycle 5.01

Pathways to circle to be bordered by gum poles and filled with 13mm crushed stone aggregate ('klippies'), similar to other areas on campus.

600mm high stabilised packed stone wall to encircle the memorial base, doubling as seating.

Interpretation Boards: Approximately five information/interpretation boards are proposed at strategic locations to tell the story of Hardekraaltjie Cemetery.

The central circle can be made using pieces of shells, old crockery, and stones/bricks (items used to depict graves in old cemeteries) to create a mosaic floor or base. A memorial remembrance stone/symbol will be placed in the centre of the base. This stone slab will include a list of names of those buried at Hardekraaltjie, with space for future names. The recommended opening line is "Beneath this garden lies the Hardekraaltjie Cemetery," with the final words "May their memory be blessed" translated into Khoisan.

This drawing is not to be scaled. Any measurements taken from information which is not dimensioned on the electronic copy are at the risk of the recipient.

The correctness and completeness of the information issued is to be verified on site by the appointed consultant(s) before the execution of works. Any discrepancies are to be reported to Stellenbosch University Facilities Management (SUFM) Development Planning and Design (DPD) immediately.

All rights reserved. No part of this drawing may be reproduced or transmitted in any form or by any means without written permission from SUFM DPD

Facilities Management Building
Hammanshand Road, Stellenbosch 7600
+27 21 808 4858 or planning @sun.ac.za



CONSULTANT INFORMATION



REVISION SCHEDULE

RevID	Change Name	Date
0	Public comments	2024.10.11

PROJECT STATUS For Information .

PROJECT NUMBER

HKM

PROJECT DESCRIPTION

Proposed memorialisation of the Hardekraaltjie cemetery site, as part of Stellenbosch University Visual Redress, Tygerberg Campus, Parow.

DRAWING NAME

Plan Section 02

DRAWING NO
HKM_Grounds_Zz_70_30.2

DATE	PAGE SIZE	DRAWN BY	CHECKED BY
2024.10.11	A3	mcw	mp

FILE PATH
F:\Assets\Tygerberg Campus\Grounds\NL_Landscape Architect\Tygerberg.pln