

Figure 1: Site development plan of the proposed new garage and sensitive aquatic features on Portion 134 of Farm 599, Rooi Els



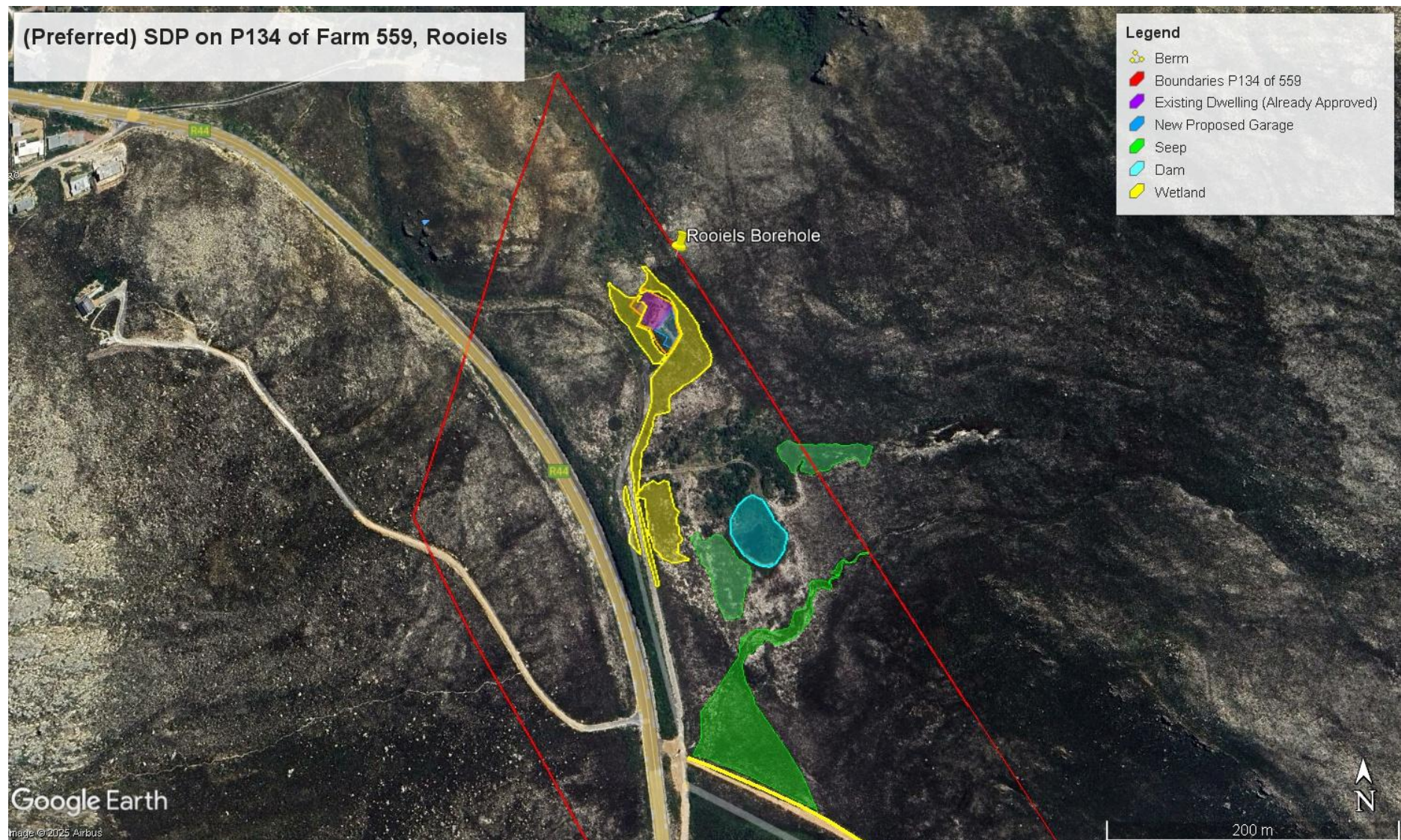


Figure 2: General site development plan of the proposed new garage and sensitive aquatic features on Portion 134 of Farm 599, Rooi Els



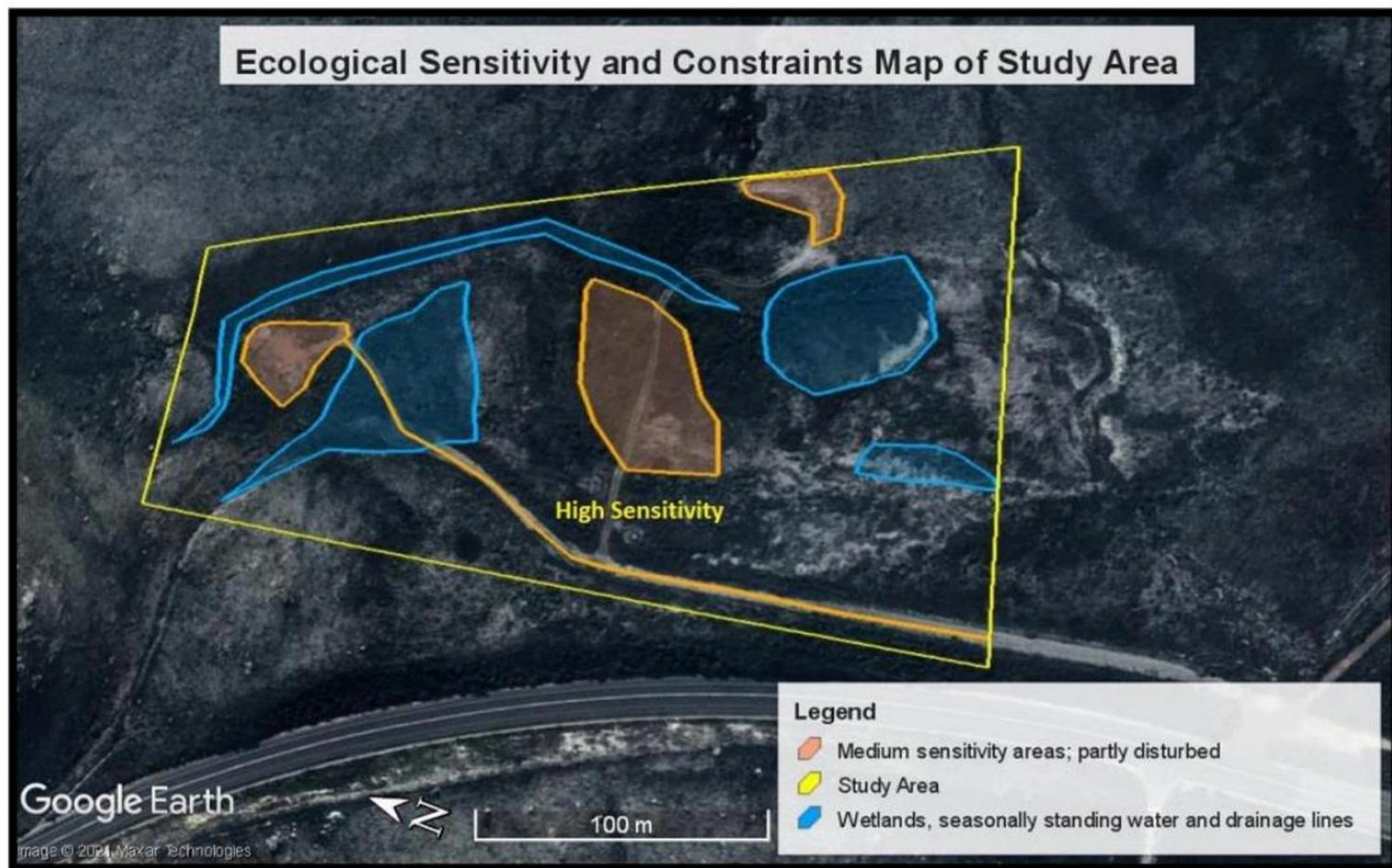


Figure 3: Ecological sensitivity and constraints map of the study area. All unshaded areas within study area are of High botanical sensitivity (Appendix G2 – Figure 3)