

**SCREENING REPORT FOR AN ENVIRONMENTAL AUTHORIZATION AS
REQUIRED BY THE 2014 EIA REGULATIONS – PROPOSED DEVELOPMENT
FOOTPRINT ENVIRONMENTAL SENSITIVITY**

EIA Reference number: n/a

Project name: Rooi Els Garage Development

Project title: Proposed Development of a New Garage on P134 of Farm 559, Rooi Els

Date screening report generated: 03/09/2025 11:17:15

Applicant: Fynbos Rooi Els (Pty) Ltd

Compiler: PHS Consulting

Compiler signature:

.....

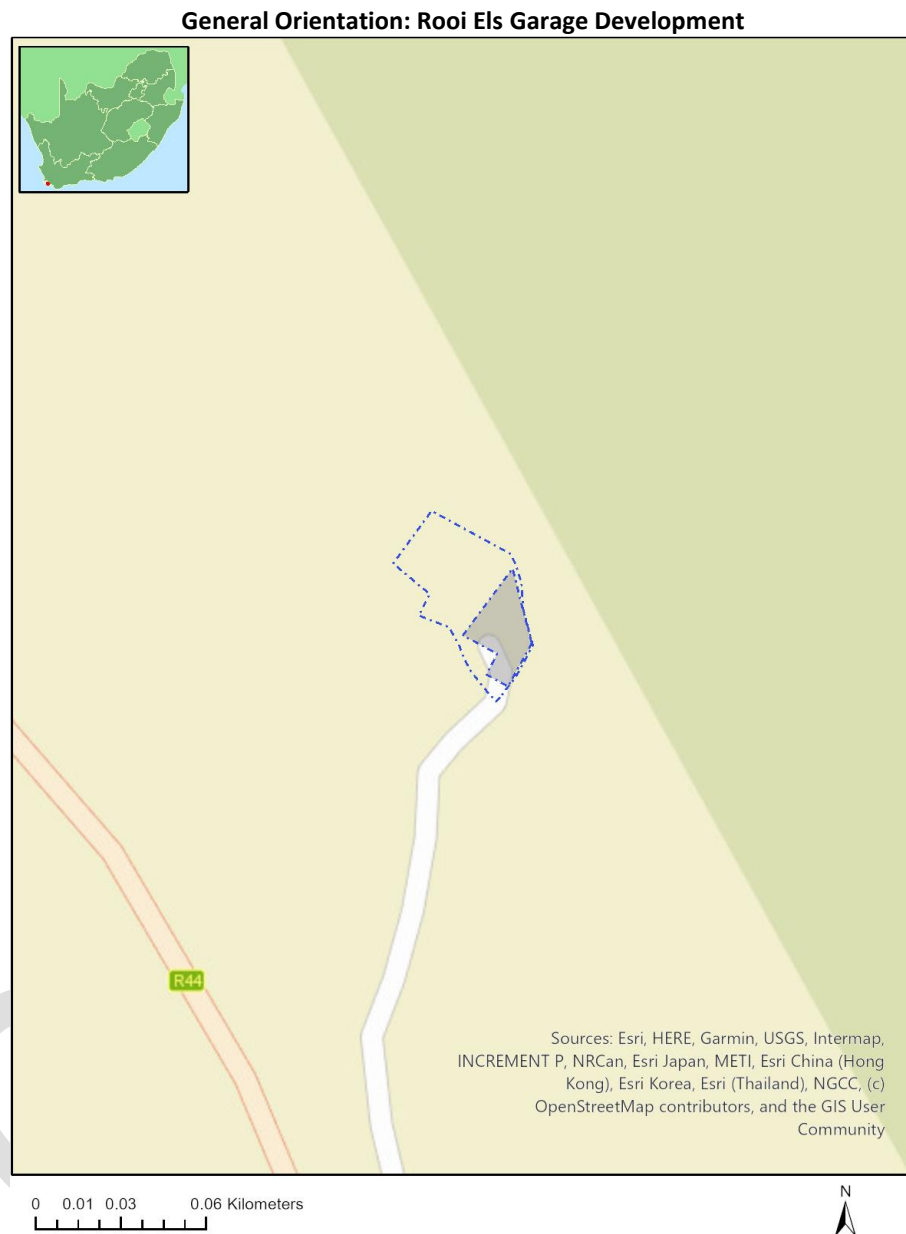
Application Category: Any activities within or close to a watercourse

Table of Contents

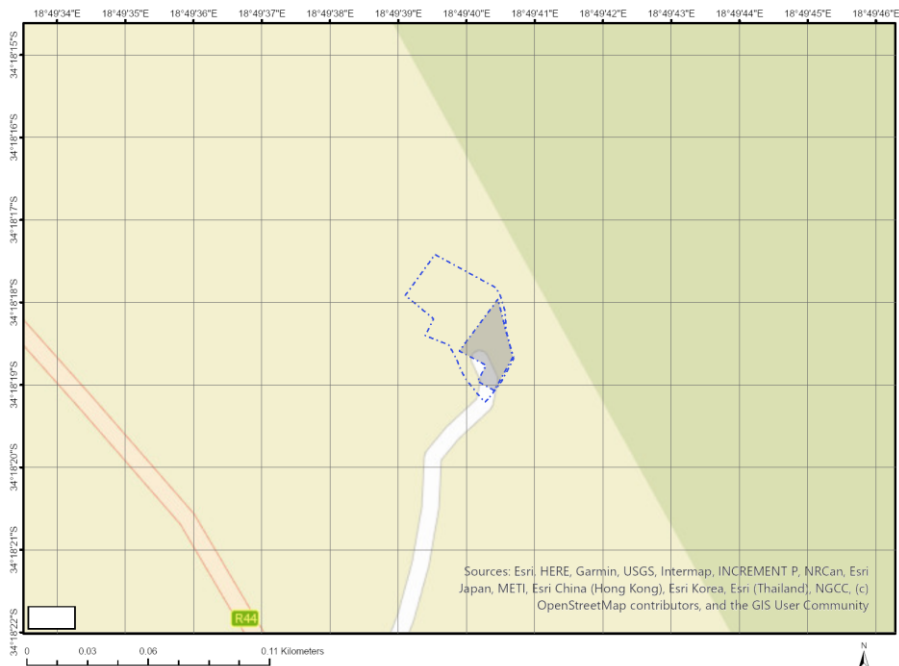
Proposed Project Location	3
Orientation map 1: General location	3
Map of proposed site and relevant area(s)	4
Cadastral details of the proposed site	4
Wind and Solar developments with an approved Environmental Authorisation or applications under consideration within 30 km of the proposed area	4
Environmental Management Frameworks relevant to the application	5
Environmental screening results and assessment outcomes	5
Relevant development incentives, restrictions, exclusions or prohibitions	5
Proposed Development Area Environmental Sensitivity	5
Specialist assessments identified	5
Results of the environmental sensitivity of the proposed area	7
MAP OF RELATIVE AGRICULTURE THEME SENSITIVITY	7
MAP OF RELATIVE ANIMAL SPECIES THEME SENSITIVITY	8
MAP OF RELATIVE AQUATIC BIODIVERSITY THEME SENSITIVITY	9
MAP OF RELATIVE ARCHAEOLOGICAL AND CULTURAL HERITAGE THEME SENSITIVITY	10
MAP OF RELATIVE CIVIL AVIATION THEME SENSITIVITY	11
MAP OF RELATIVE DEFENCE THEME SENSITIVITY	12
MAP OF RELATIVE PALEONTOLOGY THEME SENSITIVITY	13
MAP OF RELATIVE PLANT SPECIES THEME SENSITIVITY	14
MAP OF RELATIVE TERRESTRIAL BIODIVERSITY THEME SENSITIVITY	17

Proposed Project Location

Orientation map 1: General location



Map of proposed site and relevant area(s)



Cadastral details of the proposed site

Property details:

No	Farm Name	Farm/ Erf No	Portion	Latitude	Longitude	Property Type
1	HANGKLIP	559	0	34°20'11.02S	18°51'6.27E	Farm
2	HANGKLIP	559	134	34°18'28.04S	18°49'42.28E	Farm Portion

Development footprint¹ vertices:

Footprint	Latitude	Longitude
1	34°18'17.96S	18°49'40.46E
1	34°18'18.34S	18°49'40.58E
1	34°18'18.66S	18°49'40.68E
1	34°18'19.07S	18°49'40.41E
1	34°18'18.96S	18°49'40.16E
1	34°18'18.76S	18°49'40.29E
1	34°18'18.59S	18°49'39.9E
1	34°18'17.96S	18°49'40.46E

Wind and Solar developments with an approved Environmental Authorisation or applications under consideration within 30 km of the proposed area

¹ “development footprint”, means the area within the site on which the development will take place and includes all ancillary developments for example roads, power lines, boundary walls, paving etc. which require vegetation clearance or which will be disturbed and for which the application has been submitted.

No nearby wind or solar developments found.

Environmental Management Frameworks relevant to the application

No intersections with EMF areas found.

Environmental screening results and assessment outcomes

The following sections contain a summary of any development incentives, restrictions, exclusions or prohibitions that apply to the proposed development footprint as well as the most environmental sensitive features on the footprint based on the footprint sensitivity screening results for the application classification that was selected. The application classification selected for this report is:

Any activities within or close to a watercourse.

Relevant development incentives, restrictions, exclusions or prohibitions

The following development incentives, restrictions, exclusions or prohibitions and their implications that apply to this footprint are indicated below.

Incentive, restriction or prohibition	Implication
South African Conservation Areas	https://screening.environment.gov.za/ScreeningDownloads/DevelopmentZones/SACAD_OR_2025_Q1_Metadata.pdf

Proposed Development Area Environmental Sensitivity

The following summary of the development footprint environmental sensitivities is identified. Only the highest environmental sensitivity is indicated. The footprint environmental sensitivities for the proposed development footprint as identified, are indicative only and must be verified on site by a suitably qualified person before the specialist assessments identified below can be confirmed.

Theme	Very High sensitivity	High sensitivity	Medium sensitivity	Low sensitivity
Agriculture Theme			X	
Animal Species Theme		X		
Aquatic Biodiversity Theme	X			
Archaeological and Cultural Heritage Theme				X
Civil Aviation Theme				X
Defence Theme				X
Paleontology Theme		X		
Plant Species Theme			X	
Terrestrial Biodiversity Theme	X			

Specialist assessments identified

Based on the selected classification, and the known impacts associated with the proposed development, the following list of specialist assessments have been identified for inclusion in the

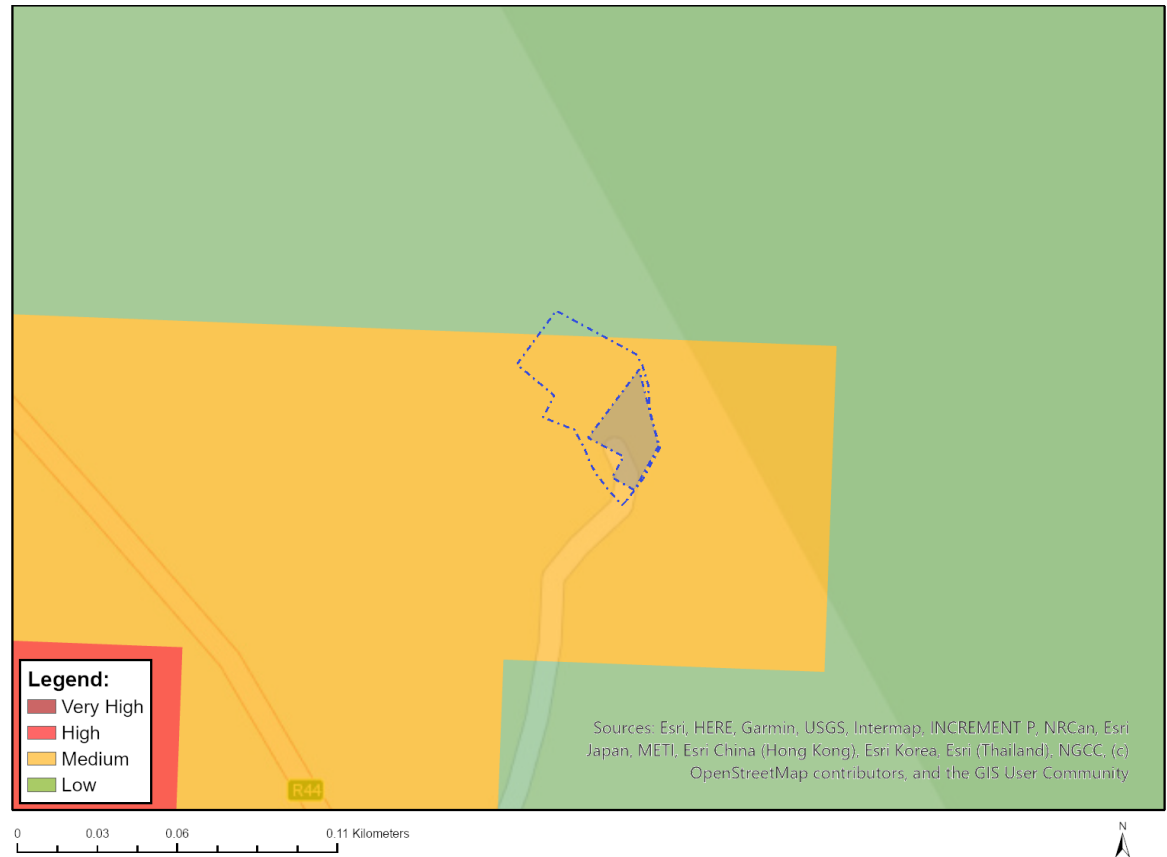
assessment report. It is the responsibility of the EAP to confirm this list and to motivate in the assessment report, the reason for not including any of the identified specialist study including the provision of photographic evidence of the footprint situation.

No	Specialist assessment	Assessment Protocol
1	Landscape/Visual Impact Assessment	https://screening.environment.gov.za/ScreeningDownloads/AssessmentProtocols/Gazetted_General_Requirement_Assessment_Protocols.pdf
2	Archaeological and Cultural Heritage Impact Assessment	https://screening.environment.gov.za/ScreeningDownloads/AssessmentProtocols/GuidanceforHIA.pdf
3	Palaeontology Impact Assessment	https://screening.environment.gov.za/ScreeningDownloads/AssessmentProtocols/GuidanceforPIA.pdf
4	Terrestrial Biodiversity Impact Assessment	https://screening.environment.gov.za/ScreeningDownloads/AssessmentProtocols/Gazetted_Terrestrial_Biodiversity_Assessment_Protocols.pdf
5	Aquatic Biodiversity Impact Assessment	https://screening.environment.gov.za/ScreeningDownloads/AssessmentProtocols/Gazetted_Aquatic_Biodiversity_Assessment_Protocols.pdf
6	Hydrology Assessment	https://screening.environment.gov.za/ScreeningDownloads/AssessmentProtocols/Gazetted_General_Requirement_Assessment_Protocols.pdf
7	Socio-Economic Assessment	https://screening.environment.gov.za/ScreeningDownloads/AssessmentProtocols/Gazetted_General_Requirement_Assessment_Protocols.pdf
8	Plant Species Assessment	https://screening.environment.gov.za/ScreeningDownloads/AssessmentProtocols/Gazetted_Plant_Species_Assessment_Protocols.pdf
9	Animal Species Assessment	https://screening.environment.gov.za/ScreeningDownloads/AssessmentProtocols/Gazetted_Animal_Species_Assessment_Protocols.pdf

Results of the environmental sensitivity of the proposed area.

The following section represents the results of the screening for environmental sensitivity of the proposed footprint for relevant environmental themes associated with the project classification. It is the duty of the EAP to ensure that the environmental themes provided by the screening tool are comprehensive and complete for the project. Refer to the disclaimer.

MAP OF RELATIVE AGRICULTURE THEME SENSITIVITY

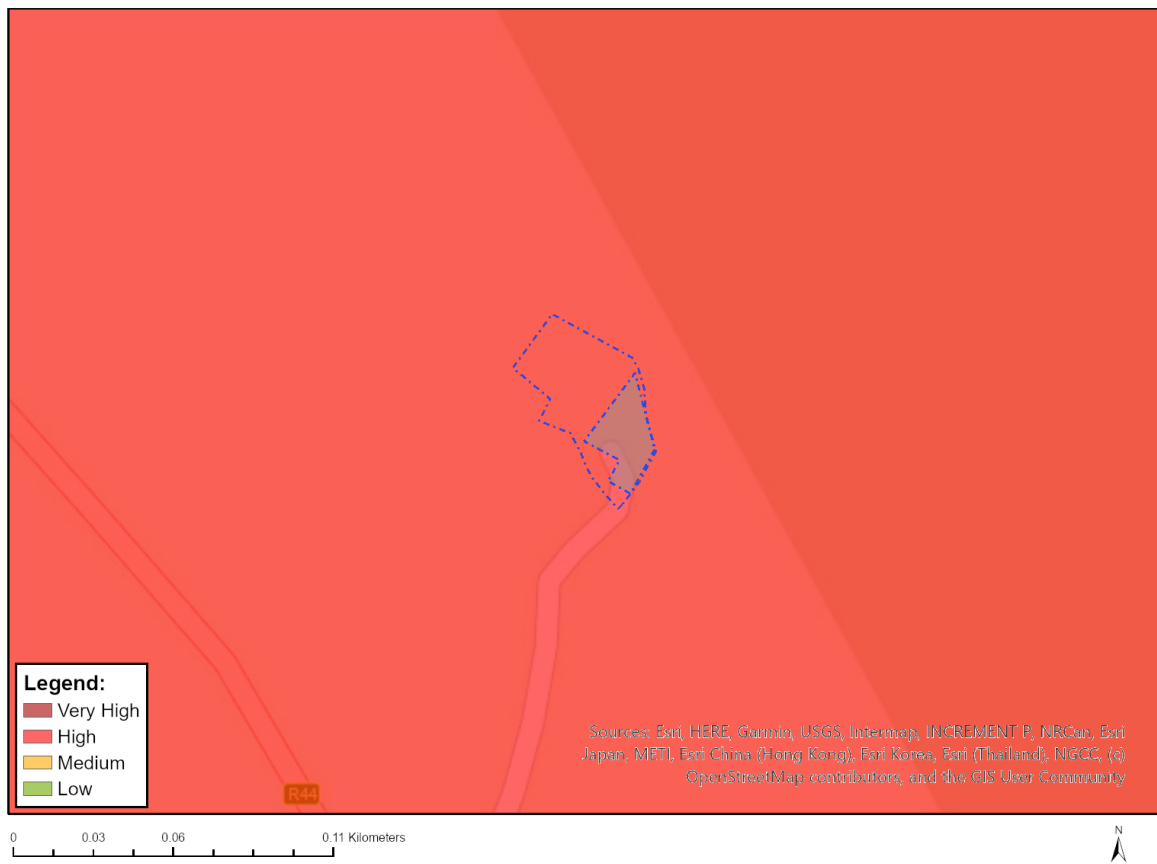


Very High sensitivity	High sensitivity	Medium sensitivity	Low sensitivity
		X	

Sensitivity Features:

Sensitivity	Feature(s)
Medium	06. Low-Moderate

MAP OF RELATIVE ANIMAL SPECIES THEME SENSITIVITY



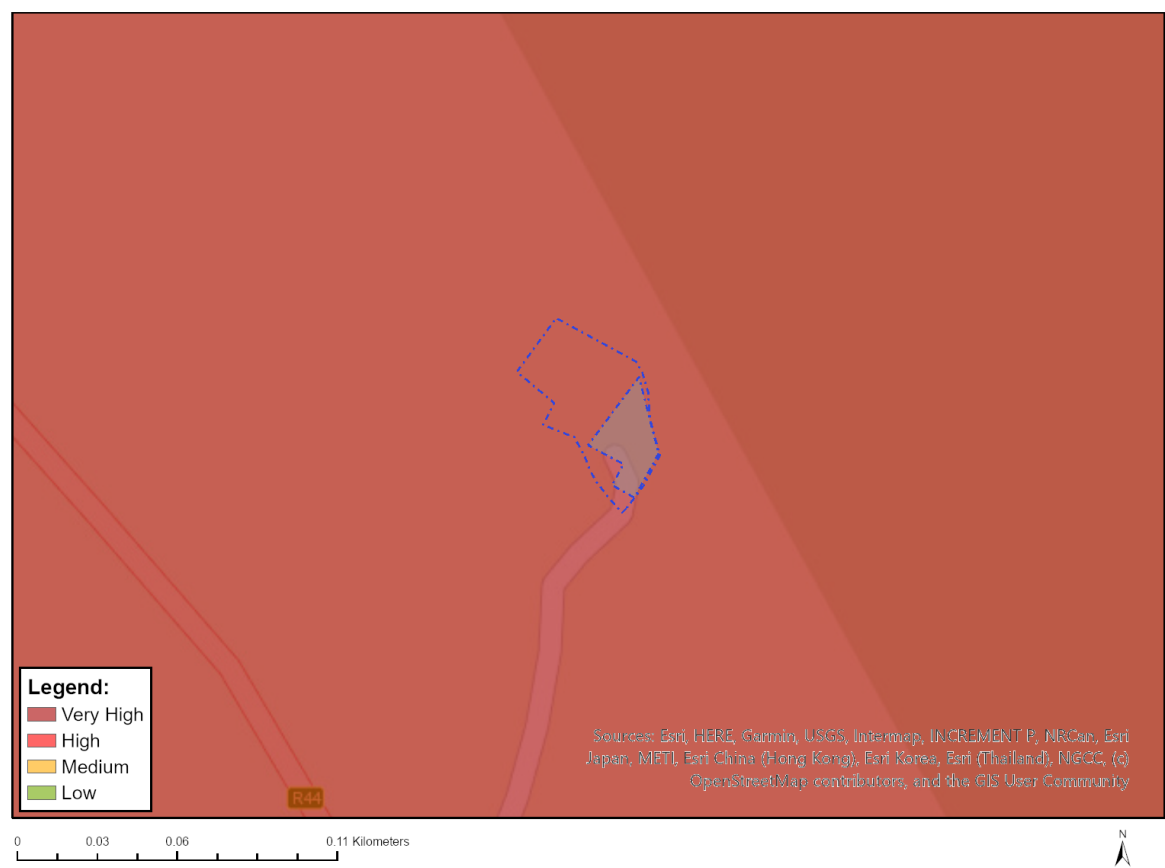
Where only a sensitive plant unique number or sensitive animal unique number is provided in the screening report and an assessment is required, the environmental assessment practitioner (EAP) or specialist is required to email SANBI at eiadatarequests@sanbi.org.za listing all sensitive species with their unique identifiers for which information is required. The name has been withheld as the species may be prone to illegal harvesting and must be protected. SANBI will release the actual species name after the details of the EAP or specialist have been documented.

Very High sensitivity	High sensitivity	Medium sensitivity	Low sensitivity
	X		

Sensitivity Features:

Sensitivity	Feature(s)
High	Aves-Circus maurus
High	Aves-Falco biarmicus
Medium	Aves-Turnix hottentottus
Medium	Invertebrate-Aneuryphymus montanus

MAP OF RELATIVE AQUATIC BIODIVERSITY THEME SENSITIVITY

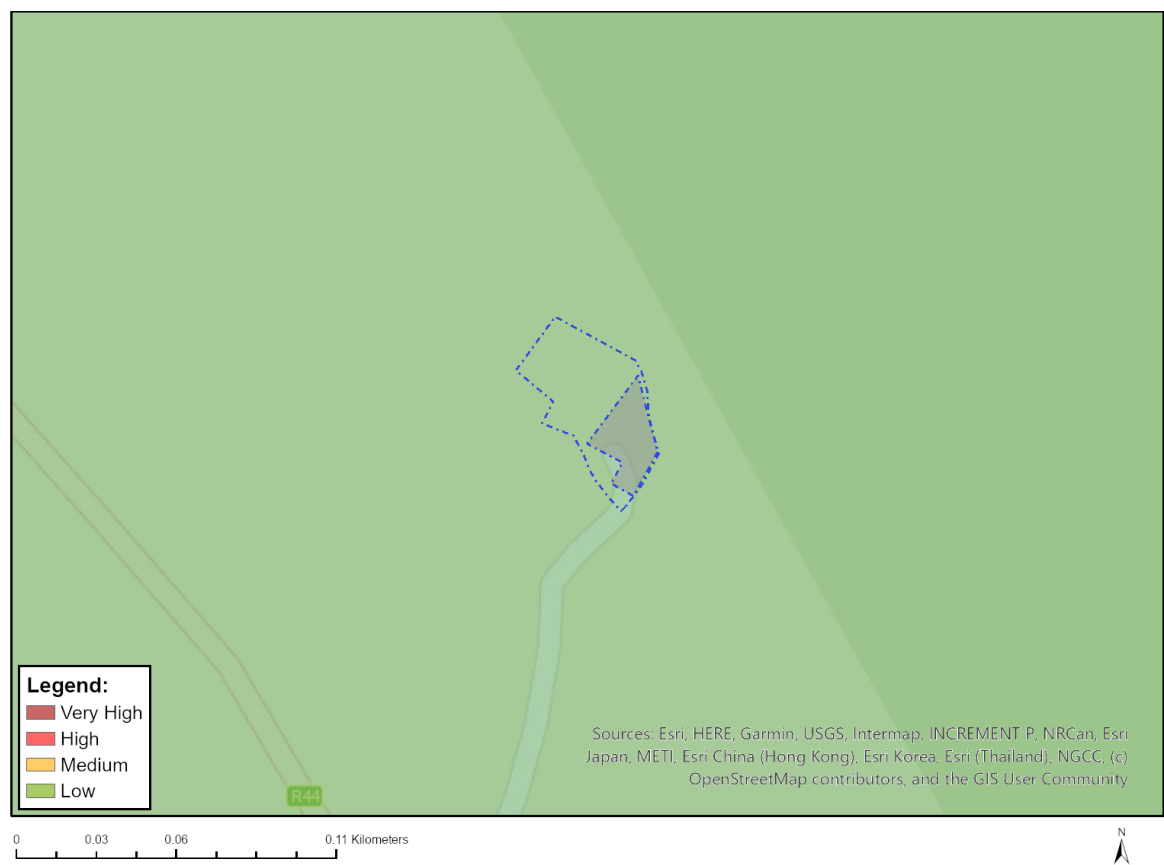


Very High sensitivity	High sensitivity	Medium sensitivity	Low sensitivity
X			

Sensitivity Features:

Sensitivity	Feature(s)
Very High	FEPA Subcatchment

MAP OF RELATIVE ARCHAEOLOGICAL AND CULTURAL HERITAGE THEME SENSITIVITY

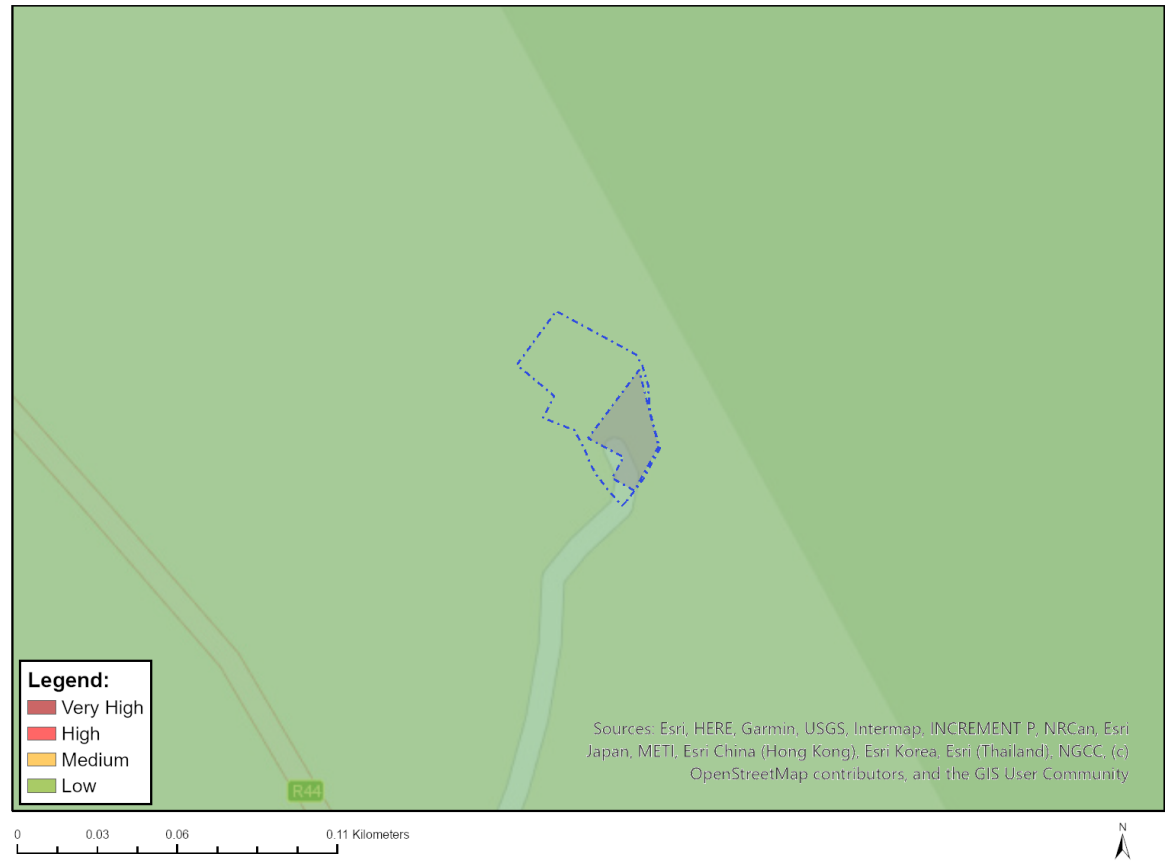


Very High sensitivity	High sensitivity	Medium sensitivity	Low sensitivity
			X

Sensitivity Features:

Sensitivity	Feature(s)
Low	Low Sensitivity

MAP OF RELATIVE CIVIL AVIATION THEME SENSITIVITY

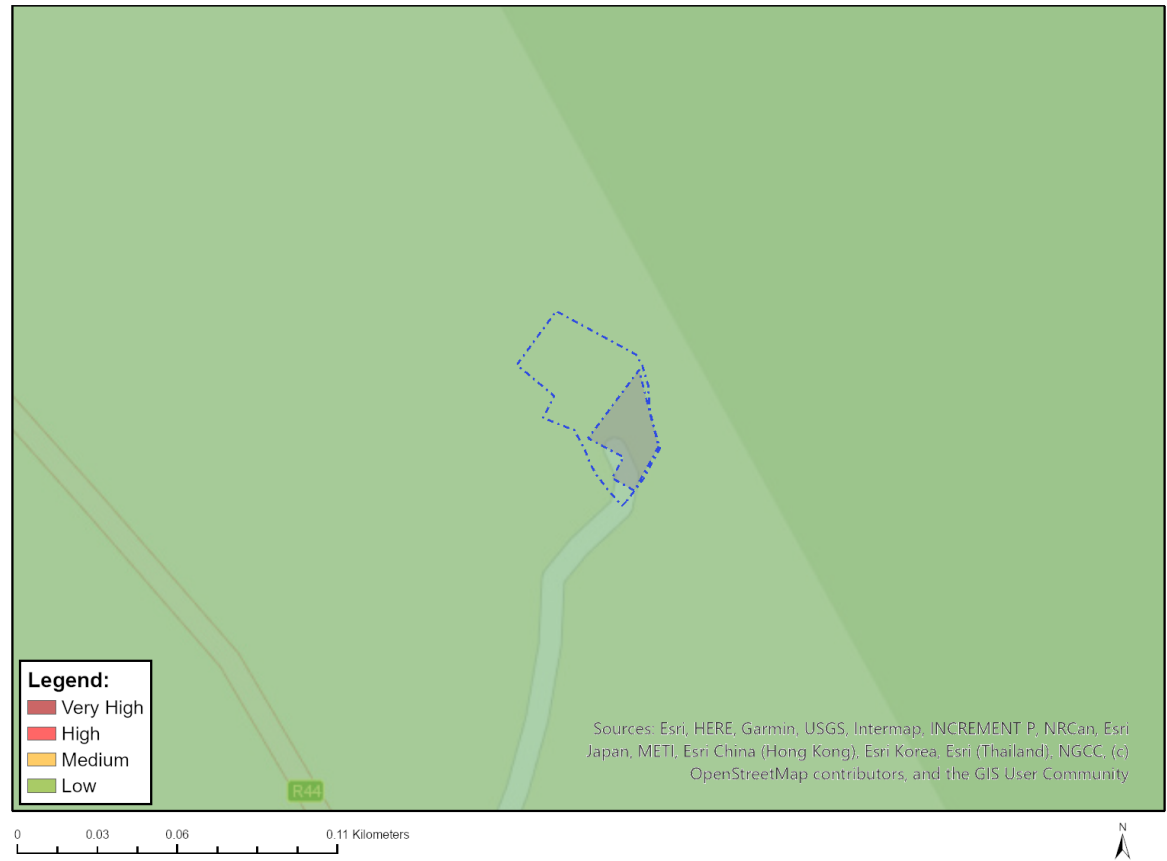


Very High sensitivity	High sensitivity	Medium sensitivity	Low sensitivity
			X

Sensitivity Features:

Sensitivity	Feature(s)
Low	Low sensitivity

MAP OF RELATIVE DEFENCE THEME SENSITIVITY

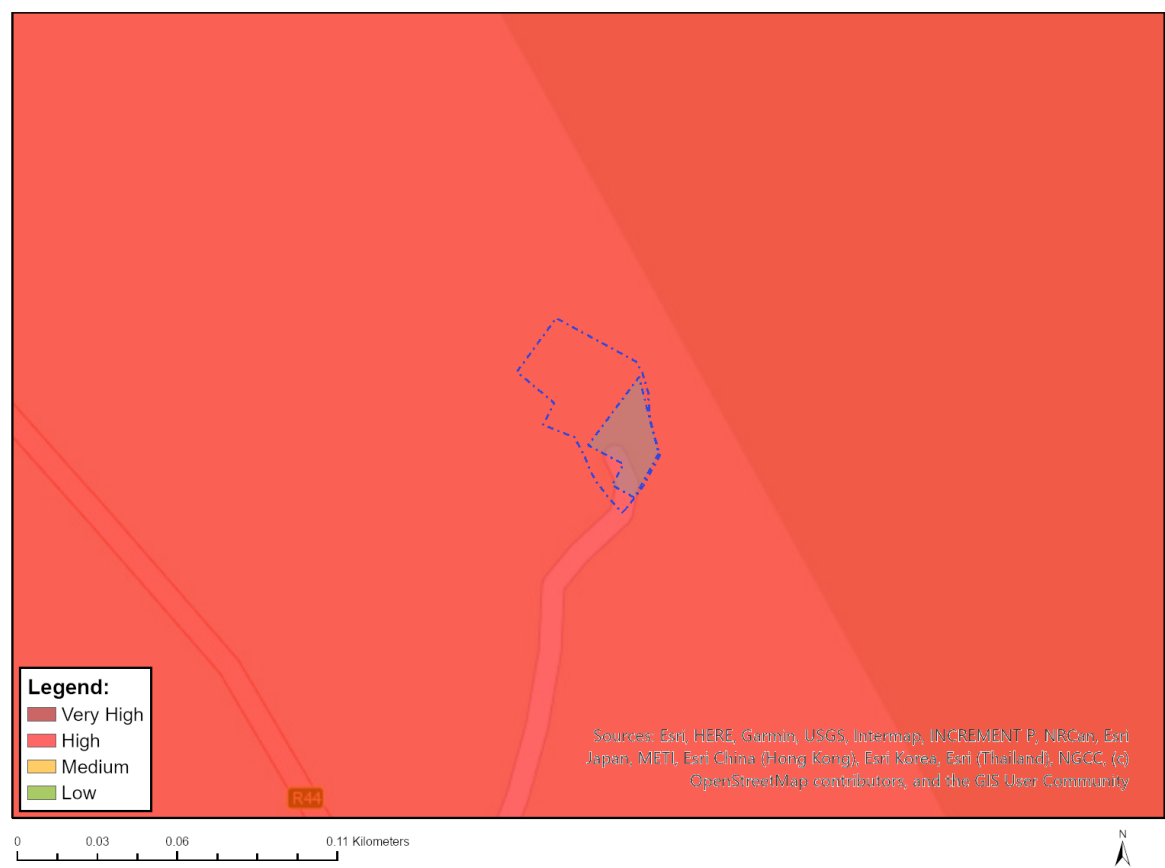


Very High sensitivity	High sensitivity	Medium sensitivity	Low sensitivity
			X

Sensitivity Features:

Sensitivity	Feature(s)
Low	Low Sensitivity

MAP OF RELATIVE PALEONTOLOGY THEME SENSITIVITY

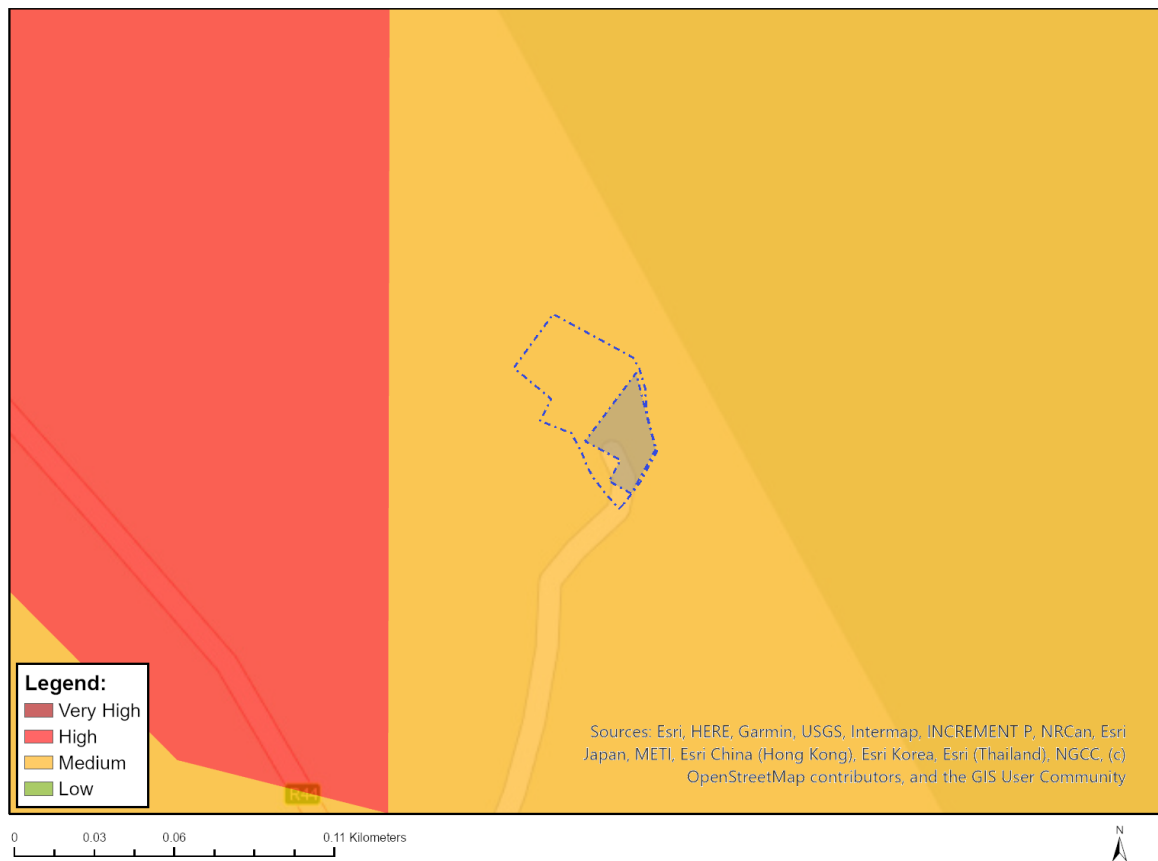


Very High sensitivity	High sensitivity	Medium sensitivity	Low sensitivity
	X		

Sensitivity Features:

Sensitivity	Feature(s)
High	Features with a High paleontological sensitivity

MAP OF RELATIVE PLANT SPECIES THEME SENSITIVITY



Where only a sensitive plant unique number or sensitive animal unique number is provided in the screening report and an assessment is required, the environmental assessment practitioner (EAP) or specialist is required to email SANBI at eiadatarequests@sanbi.org.za listing all sensitive species with their unique identifiers for which information is required. The name has been withheld as the species may be prone to illegal harvesting and must be protected. SANBI will release the actual species name after the details of the EAP or specialist have been documented.

Very High sensitivity	High sensitivity	Medium sensitivity	Low sensitivity
		X	

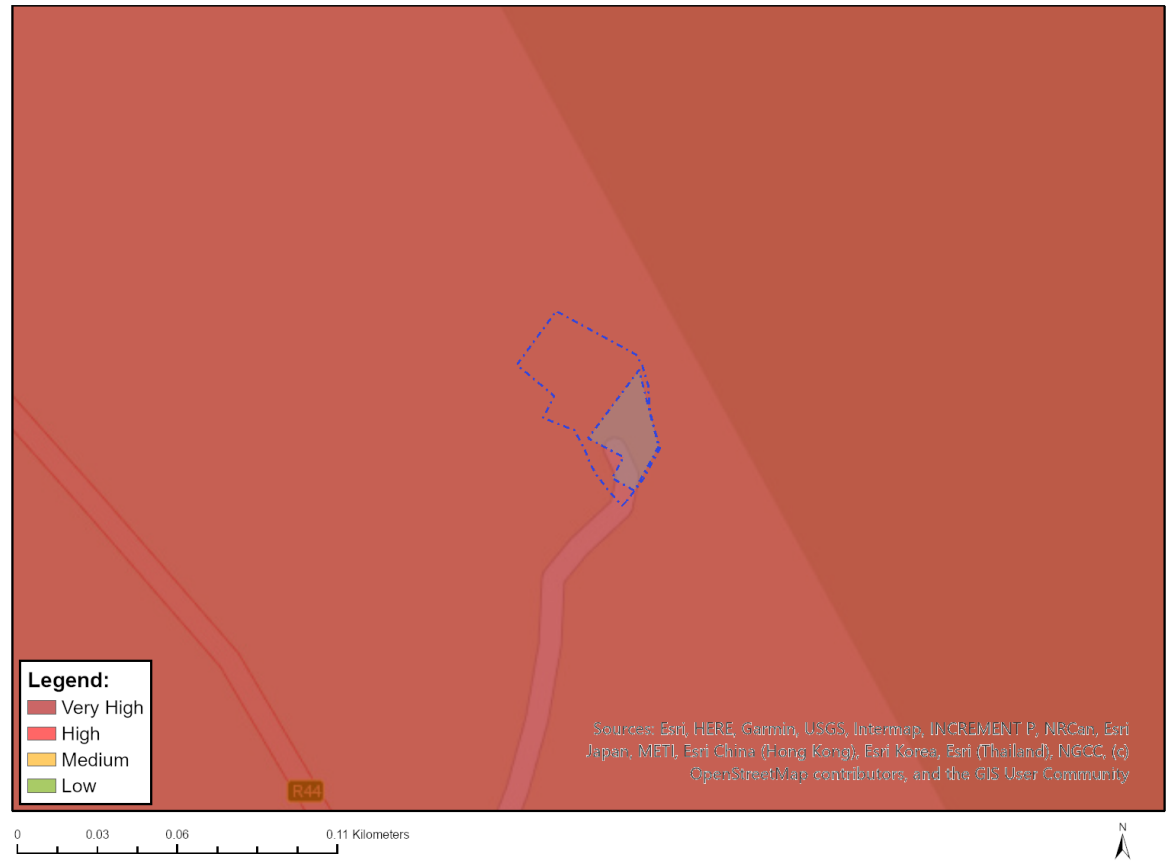
Sensitivity Features:

Sensitivity	Feature(s)
Medium	Lampranthus filicaulis
Medium	Lampranthus glomeratus
Medium	Lampranthus leptaleon
Medium	Lampranthus spiniformis
Medium	Lampranthus stenus
Medium	Lampranthus tenuifolius
Medium	Delosperma guthriei
Medium	Erepsia promontorii
Medium	Amphithalea oppositifolia
Medium	Aspalathus acanthiloba
Medium	Aspalathus globosa
Medium	Aspalathus globulosa
Medium	Aspalathus monosperma

Medium	<i>Aspalathus oblongifolia</i>
Medium	<i>Aspalathus stokoei</i>
Medium	<i>Podalyria argentea</i>
Medium	<i>Colpoos speciosus</i>
Medium	<i>Audouinia capitata</i>
Medium	<i>Berzelia dregeana</i>
Medium	<i>Berzelia ecklonii</i>
Medium	<i>Staavia brownii</i>
Medium	<i>Leucadendron coniferum</i>
Medium	<i>Leucadendron linifolium</i>
Medium	<i>Leucospermum bolusii</i>
Medium	<i>Leucospermum hypophyllocarpodendron</i> subsp. <i>hypophyllocarpodendron</i>
Medium	<i>Leucospermum prostratum</i>
Medium	<i>Protea angustata</i>
Medium	<i>Protea longifolia</i>
Medium	<i>Mimetes hirtus</i>
Medium	<i>Mimetes hottentoticus</i>
Medium	<i>Spatalla mollis</i>
Medium	<i>Spatalla prolifera</i>
Medium	<i>Diastella fraterna</i>
Medium	<i>Diastella thymelaeoides</i> subsp. <i>meridiana</i>
Medium	<i>Serruria inconspicua</i>
Medium	<i>Orothamnus zeyheri</i>
Medium	<i>Merciera azurea</i>
Medium	<i>Merciera tenuifolia</i>
Medium	<i>Apodytes geldenhuysii</i>
Medium	Sensitive species 794
Medium	<i>Pentameris bachmannii</i>
Medium	<i>Pentameris holciformis</i>
Medium	<i>Pentameris pholiuroides</i>
Medium	<i>Ehrharta setacea</i> subsp. <i>uniflora</i>
Medium	<i>Aristea zeyheri</i>
Medium	<i>Geissorhiza brehmii</i>
Medium	<i>Geissorhiza lithicola</i>
Medium	<i>Ixia sarmentosa</i>
Medium	Sensitive species 232
Medium	Sensitive species 934
Medium	Sensitive species 1140
Medium	<i>Nivenia levynsiae</i>
Medium	<i>Nivenia stokoei</i>
Medium	<i>Pauridia alba</i>
Medium	<i>Erica brachialis</i>
Medium	<i>Erica capillaris</i> var. <i>capillaris</i>
Medium	<i>Erica patersonii</i>
Medium	<i>Erica pillansii</i> subsp. <i>pillansii</i>
Medium	<i>Erica ribisaria</i>
Medium	<i>Erica riparia</i>
Medium	<i>Erica thomae</i>
Medium	<i>Erica banksii</i> subsp. <i>comptonii</i>
Medium	<i>Erica ceraria</i>
Medium	<i>Sonderothamnus petraeus</i>
Medium	Sensitive species 8
Medium	Sensitive species 714
Medium	<i>Centella caespitosa</i>
Medium	<i>Isolepis venustula</i>
Medium	<i>Ficinia distans</i>
Medium	<i>Ficinia elatior</i>
Medium	<i>Ficinia micrantha</i>
Medium	<i>Ficinia minutiflora</i>
Medium	<i>Ficinia pinguior</i>

Medium	<i>Ficinia rigida</i>
Medium	<i>Thamnochortus pellucidus</i>
Medium	<i>Elegia fenestrata</i>
Medium	<i>Elegia prominens</i>
Medium	<i>Anthochortus capensis</i>
Medium	<i>Hypodiscus alternans</i>
Medium	<i>Restio pumilis</i>
Medium	<i>Restio clandestinus</i>
Medium	<i>Restio femineus</i>
Medium	<i>Restio papillosus</i>
Medium	Sensitive species 384
Medium	Sensitive species 460
Medium	Sensitive species 1139
Medium	<i>Acrolophia bolusii</i>
Medium	Sensitive species 1192
Medium	<i>Pterygodium cruciferum</i>
Medium	<i>Evotella rubiginosa</i>
Medium	<i>Gnidia humilis</i>
Medium	<i>Passerina paludosa</i>
Medium	<i>Metalasia lichtensteinii</i>
Medium	<i>Syncarpha zeyheri</i>
Medium	<i>Cotula eckloniana</i>
Medium	<i>Arctotis angustifolia</i>
Medium	<i>Cullumia squarrosa</i>
Medium	<i>Dimorphotheca walliana</i>
Medium	<i>Osmitopsis parvifolia</i>
Medium	<i>Agathosma hookeri</i>
Medium	<i>Cliffortia ericifolia</i>
Medium	<i>Cliffortia heterophylla</i>
Medium	<i>Cliffortia prionota</i>
Medium	<i>Cliffortia recurvata</i>
Medium	<i>Muraltia paludosa</i>
Medium	Sensitive species 719
Medium	Sensitive species 1151
Medium	<i>Phylica linifolia</i>
Medium	<i>Capelio caledonica</i>
Medium	<i>Skiatophytum skiatophytoides</i>
Medium	<i>Lampranthus debilis</i>
Medium	<i>Lampranthus glaucus</i>
Medium	<i>Xiphotheca reflexa</i>
Medium	<i>Aspalathus lebeckioides</i>
Medium	<i>Protea scolymocephala</i>
Medium	Sensitive species 800
Medium	Sensitive species 599
Medium	<i>Elegia verreauxii</i>
Medium	<i>Restio paludosus</i>
Medium	Sensitive species 500
Medium	Sensitive species 53
Medium	<i>Pachites bodkinii</i>
Medium	<i>Lachnaea grandiflora</i>

MAP OF RELATIVE TERRESTRIAL BIODIVERSITY THEME SENSITIVITY



Very High sensitivity	High sensitivity	Medium sensitivity	Low sensitivity
X			

Sensitivity Features:

Sensitivity	Feature(s)
Very High	CBA: Terrestrial
Very High	FEPA Subcatchment
Very High	CR_ Kogelberg Sandstone Fynbos