



## **APPENDIX B2 – SITE PLAN SHOWING UNAUTHORISED CLEARANCE**

Prepared by: PHS Consulting



Figure 1: Aerial imagery from November 2023 showing Footprint 1 and Footprint 2 prior to undertaking of unauthorized vegetation clearance and excavation.



Figure 2: Aerial imagery from May 2024 showing unlawful vegetation clearance and excavation within Footprint 1 and Footprint 2 on Portion 54 of Farm 515, The Potteberg Estates, Infanta. Although not visible in current aerial imagery, an approximately 64 m<sup>2</sup> double garage (indicated by white star) and an approximately 8 m<sup>2</sup> pumproom (indicated by yellow star) has already been developed within footprint 1.



Figure 3: Aerial imagery from 2023 showing Footprint 3 prior to undertaking of unauthorized vegetation clearance.

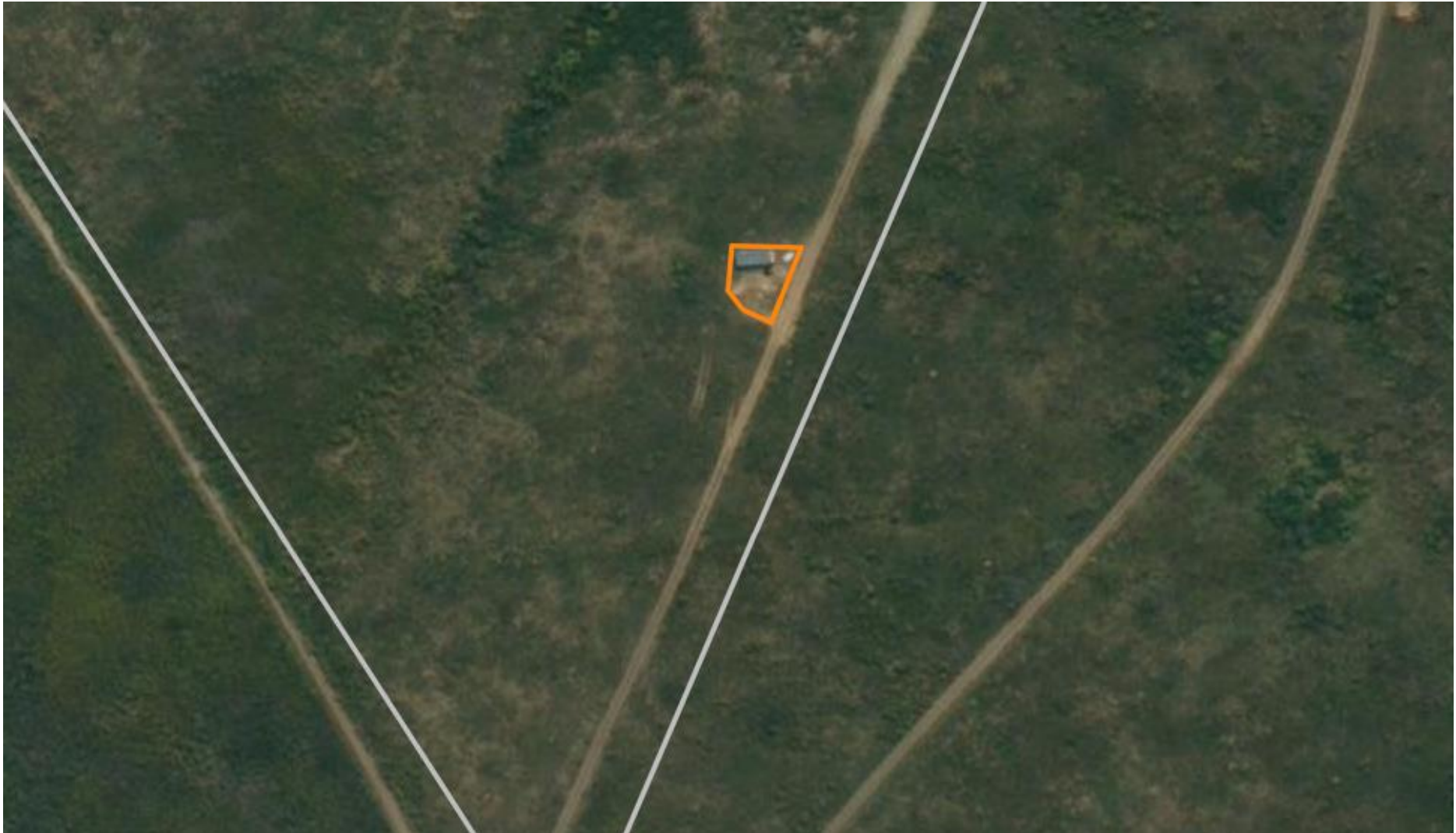


Figure 4: Aerial imagery from 2024 showing unlawful vegetation clearance within Footprint 3 on Portion 54 of Farm 515, The Potteberg Estates, Infanta. The caretaker's cottage, with an approximate footprint of 36 m<sup>2</sup> and constructed within this area, is also visible.