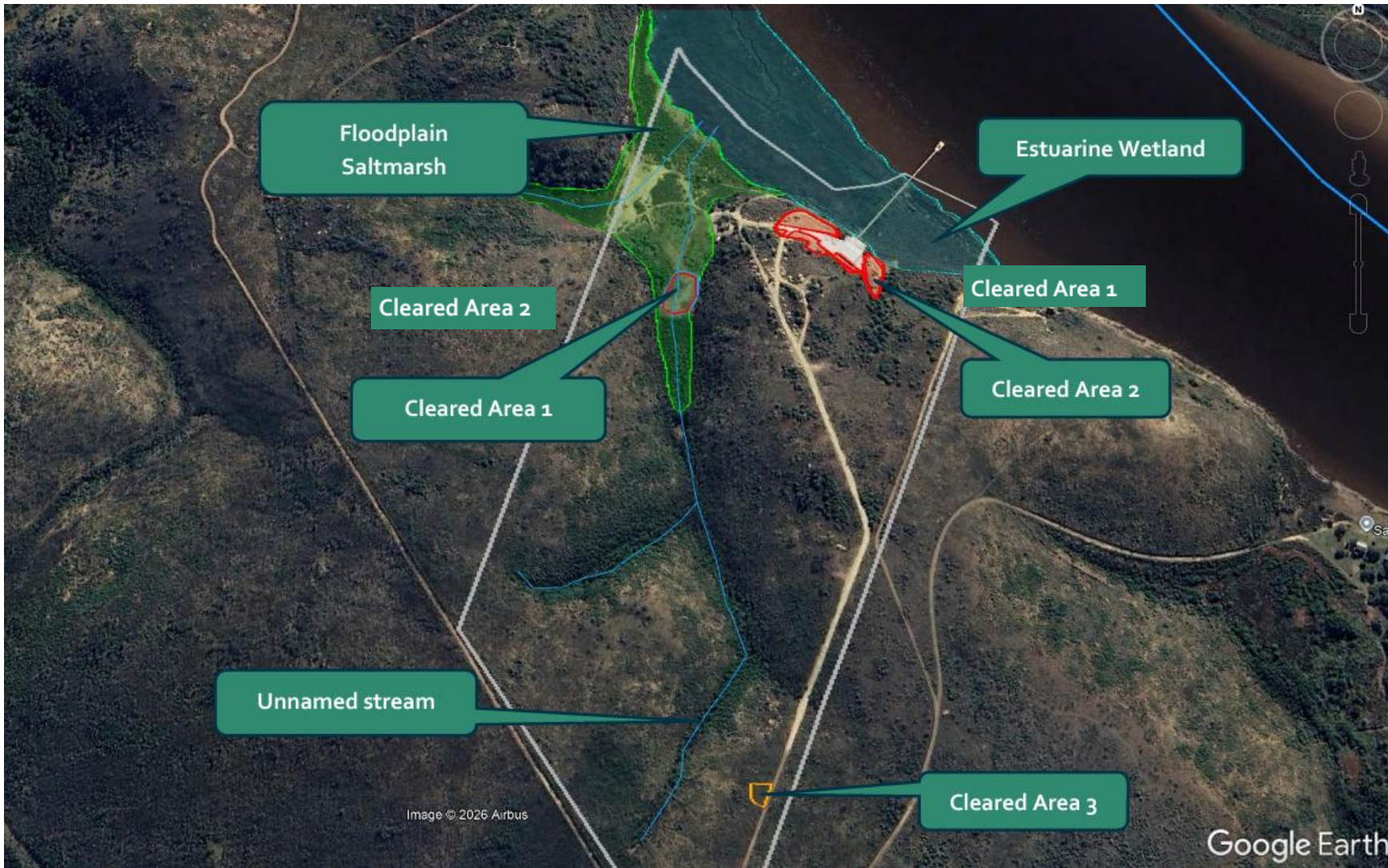




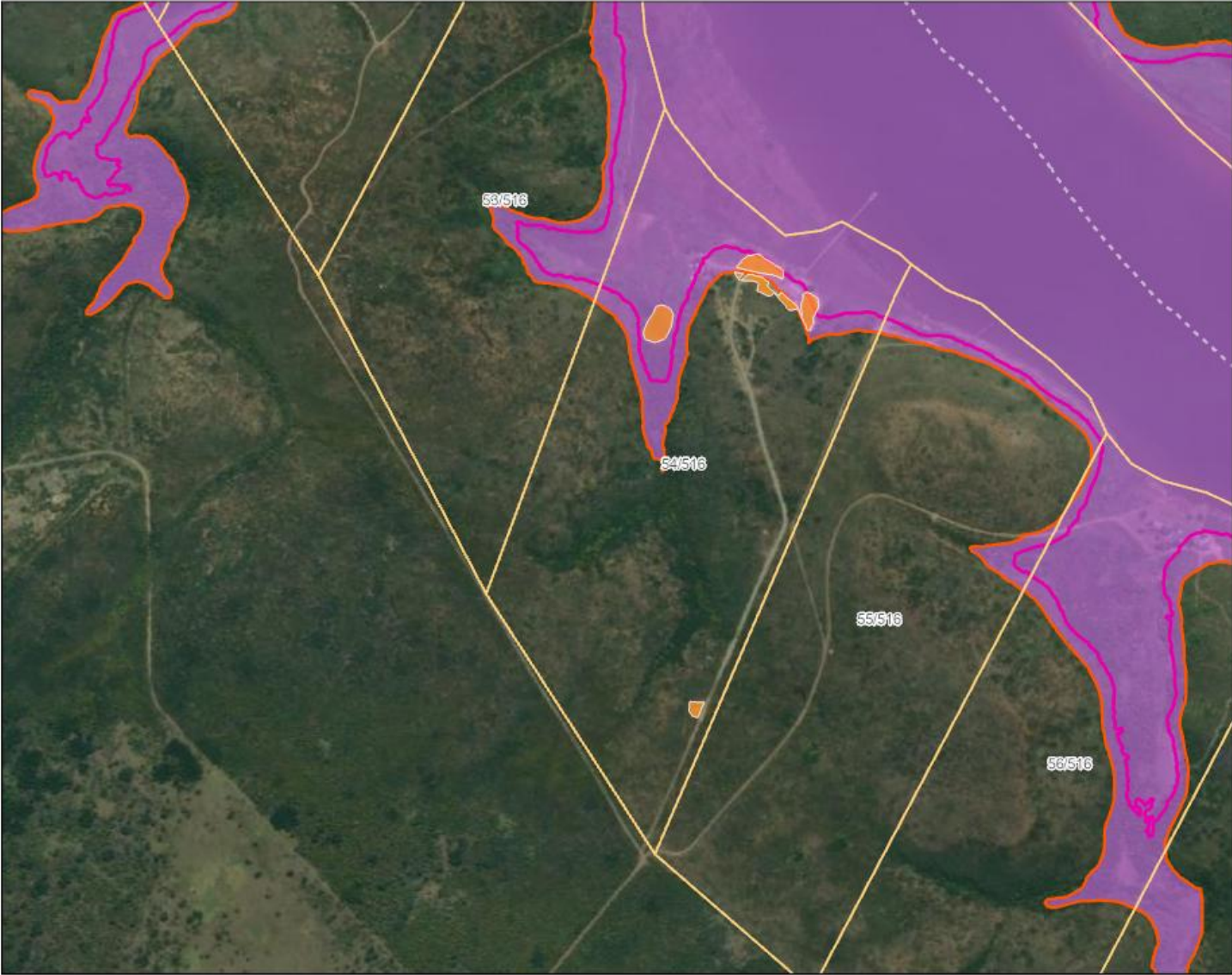
**APPENDIX B3 - DEVELOPMENT FOOTPRINT
OVERLAIN ON ENVIRONMENTAL
SENSITIVITIES**

Prepared by: EverWater & PHS Consulting



Satellite image showing freshwater features, including the Floodplain Saltmarsh (green polygon), the estuarine wetland (turquoise polygon) with the Breede River to the north-east, the Unnamed stream and the three cleared areas(Google Earth, 2025) (Snyman 2025).

Portion 54 of Farm 516 - Coastal Aspects



Legend

- Clearance Footprint 3
- Clearance Footprint 2
- Clearance Footprint 1
- Farm Portions (Surveyor General)

COASTAL MANAGEMENT

Overberg Management Lines

- Coastal Management Line
- Coastal Protection Zone
- Rural Risk Zone

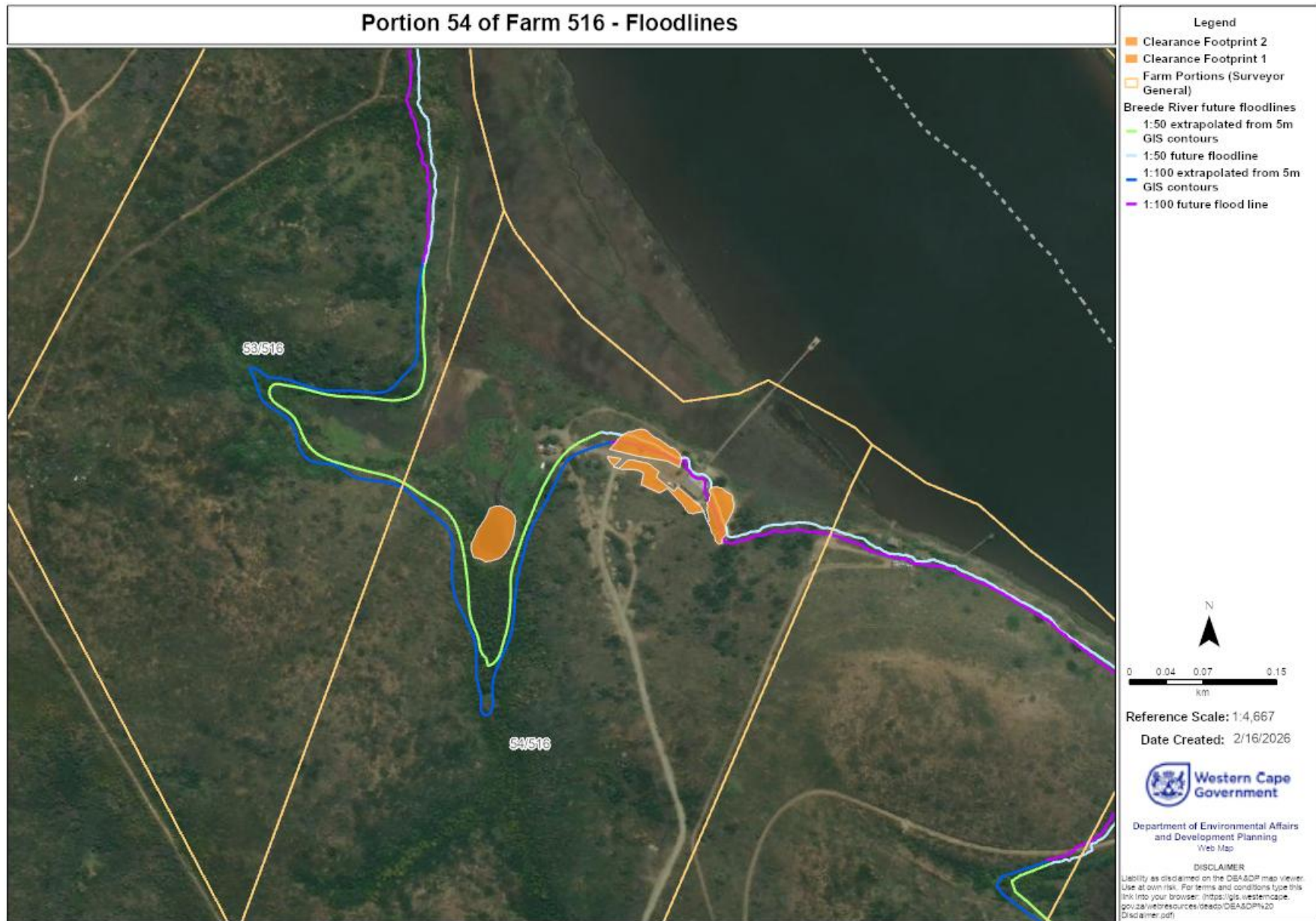
0 0.05 0.1 0.2 km

Reference Scale: 1:7,779
Date Created: 2/10/2026

Department of Environmental Affairs and Development Planning
Web Map

DISCLAIMER
Liability as disclaimed on the DEA&DP map viewer. Use at own risk. For terms and conditions type this link into your browser: <https://gis.westerncape.gov.za/webresources/idea0/DEA&DP%20Disclaimer.pdf>

Satellite image showing the coastal management lines associated with the development site(DEADP Coastal Viewer, 2025)



Satellite image showing the flood lines associated with the development site (DEADP Coastal Viewer, 2025)