



APPENDIX E – BIODIVERSITY OVERLAY MAPS

Prepared by: PHS Consulting

Critical Biodiversity Areas - Portion 54 of Farm 516, Infanta



Legend

Critical Biodiversity Areas (Degraded)

- CBA2: Aquatic
- CBA2: Terrestrial

Critical Biodiversity Areas

- CBA: Estuary
- CBA: Terrestrial
- CBA: Wetland

Map Center: Lon: 20°42'55.9"E
Lat: 34°22'52"S

Scale: 1:6,000

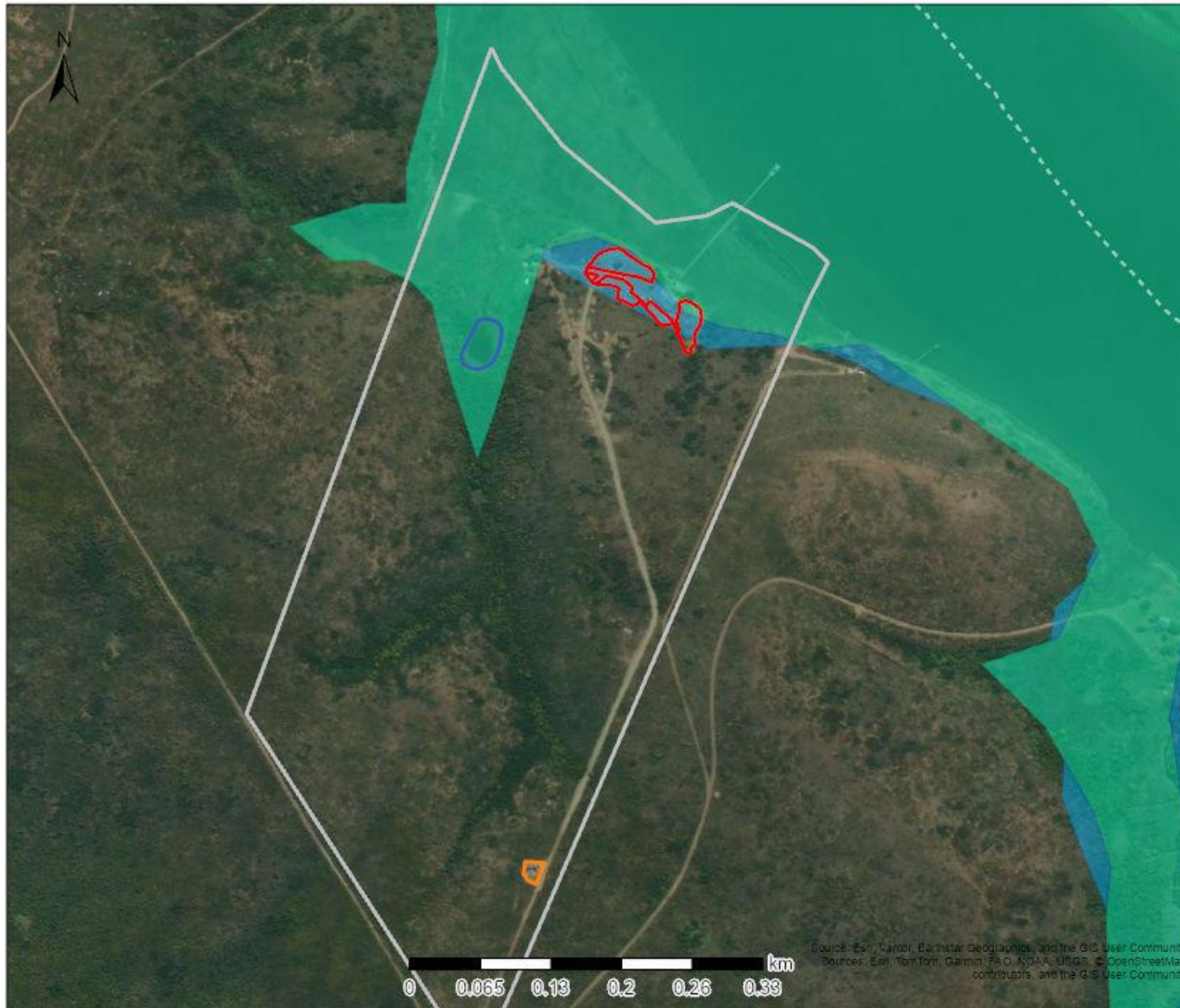
Date created: 2026/09/01



**Western Cape
Government**
FOR YOU

CapeNature (2024). 2023 Western Cape Biodiversity Spatial Plan and Guidelines. Biodiversity Capabilities, CapeNature. Source: Esri, Vantor, Earthstar Geographics, and the GIS User Community. Sources: Esri, TomTom, Garmin, FAO, NOAA, USGS, © OpenStreetMap contributors, and the GIS User Community

Aquatic Features - Portion 54 of Farm 516, Infanta



Legend

Wetlands (NFEPA)

- Estuaries
- Natural

Map Center: Lon: 20°42'57.6"E
Lat: 34°22'50.3"S

Scale: 1:6,000

Date created: 2026/12/02



Western Cape
Government
FOR YOU

Source: Esri, Garmin, Earthstar Geographics, and the GIS User Community
Sources: Esri, TomTom, Garmin, FAO, NOAA, USGS, © OpenStreetMap contributors, and the GIS User Community

Topography - Portion 54 of Farm 516, Infanta



Legend

— 5m Contours

Map Center: Lon: 20°42'54.5"E
Lat: 34°22'52"S

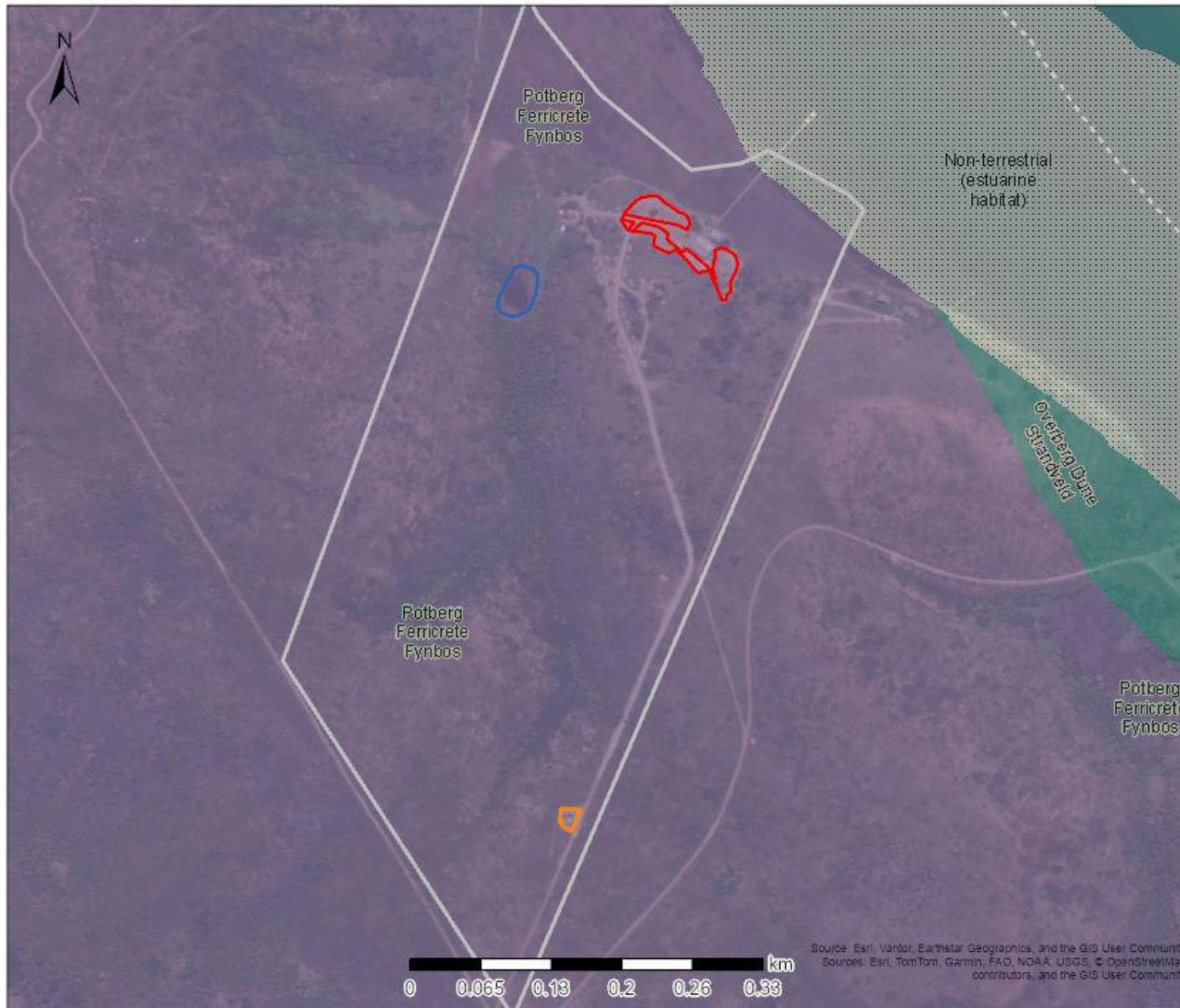
Scale: 1:6,000

Date created: 2026/12/01



Source: Esri, Garmin, Earthstar Geographics, and the GIS User Community
Sources: Esri, TomTom, Garmin, FAO, NOAA, USGS, OpenStreetMap contributors, and the GIS User Community

Terrestrial Vegetation - Portion 54 of Farm 516, Infanta



Legend

VEGMAP 2024 (beta)

Map Code

<Null>

FFf2

FS7

Map Center: Lon: 20°42'56.3"E
Lat: 34°22'51.9"S

Scale: 1:6,000

Date created: 2026/09/01

Source: Esri, Vantor, Earthstar Geographics, and the GIS User Community
Sources: Esri, TomTom, Garmin, FAO, NOAA, USGS, © OpenStreetMap contributors, and the GIS User Community



Western Cape
Government
FOR YOU