



**APPENDIX M1 – DFFE SCREENING TOOL
REPORT**

**SCREENING REPORT FOR AN ENVIRONMENTAL AUTHORIZATION AS
REQUIRED BY THE 2014 EIA REGULATIONS – PROPOSED DEVELOPMENT
FOOTPRINT ENVIRONMENTAL SENSITIVITY**

EIA Reference number: Pre-App DEA&DP S24G

Project name: Section 24G Application

Project title: PORTION 54 OF THE FARM POTTEBERG ESTATES NO 516

Date screening report generated: 08/01/2026 18:20:41

Applicant: WABD Investments (Pty) Ltd

Compiler: PHS Consulting

Compiler signature:

.....

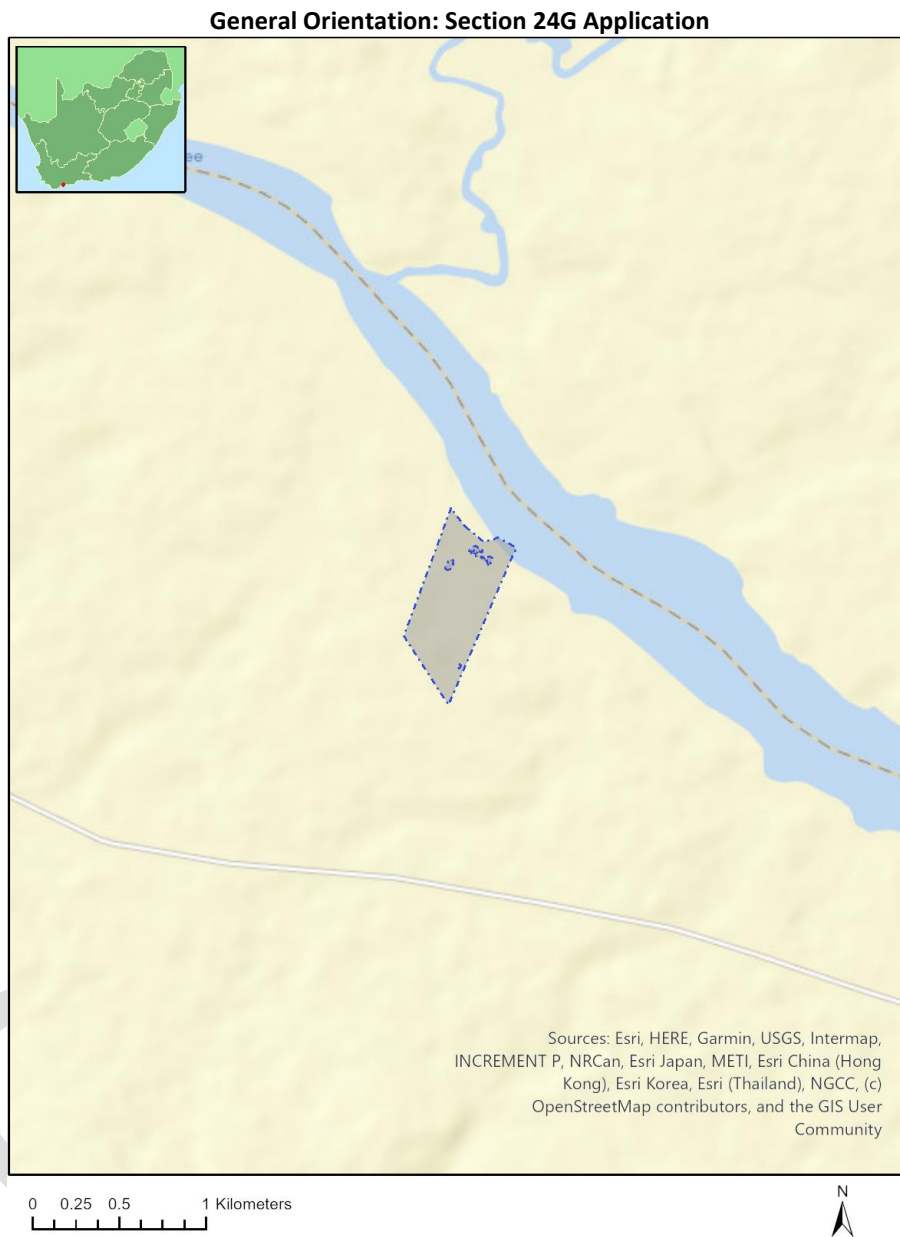
Application Category: Transformation of land | Indigenous vegetation

Table of Contents

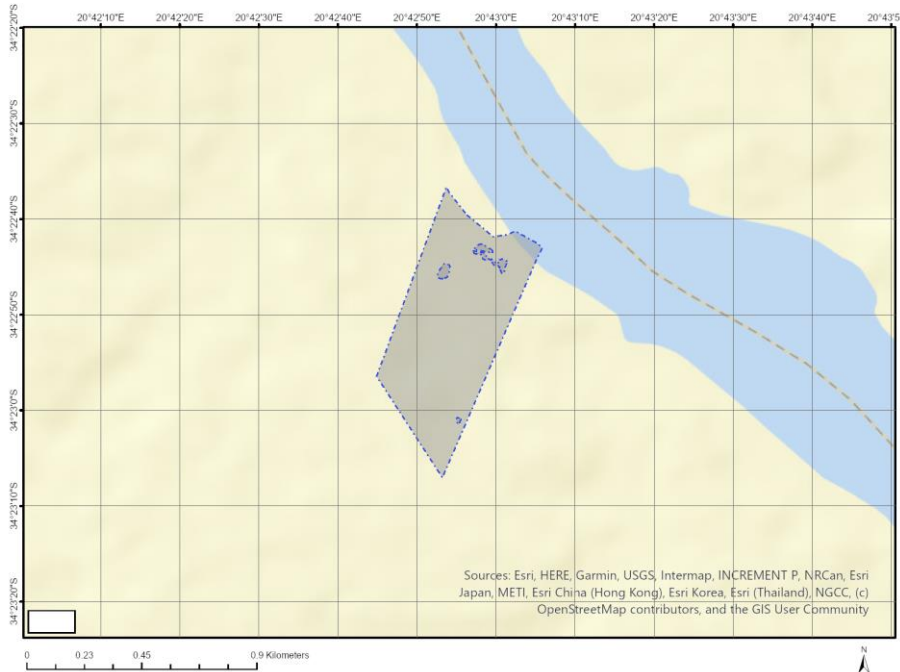
Proposed Project Location	3
Orientation map 1: General location	3
Map of proposed site and relevant area(s)	4
Cadastral details of the proposed site	4
Wind and Solar developments with an approved Environmental Authorisation or applications under consideration within 30 km of the proposed area	7
Environmental Management Frameworks relevant to the application	7
Environmental screening results and assessment outcomes	7
Relevant development incentives, restrictions, exclusions or prohibitions	7
Proposed Development Area Environmental Sensitivity	7
Specialist assessments identified	8
Results of the environmental sensitivity of the proposed area	9
MAP OF RELATIVE AGRICULTURE THEME SENSITIVITY	9
MAP OF RELATIVE ANIMAL SPECIES THEME SENSITIVITY	10
MAP OF RELATIVE AQUATIC BIODIVERSITY THEME SENSITIVITY	11
MAP OF RELATIVE ARCHAEOLOGICAL AND CULTURAL HERITAGE THEME SENSITIVITY	12
MAP OF RELATIVE CIVIL AVIATION THEME SENSITIVITY	13
MAP OF RELATIVE DEFENCE THEME SENSITIVITY	14
MAP OF RELATIVE PALEONTOLOGY THEME SENSITIVITY	15
MAP OF RELATIVE PLANT SPECIES THEME SENSITIVITY	16
MAP OF RELATIVE TERRESTRIAL BIODIVERSITY THEME SENSITIVITY	18

Proposed Project Location

Orientation map 1: General location



Map of proposed site and relevant area(s)



Cadastral details of the proposed site

Property details:

No	Farm Name	Farm/ Erf No	Portion	Latitude	Longitude	Property Type
1	THE POTTEBERG ESTATES	516	0	34°25'15.78S	20°41'48.78E	Farm
2	THE POTTEBERG ESTATES	516	54	34°22'51.15S	20°42'54.58E	Farm Portion

Development footprint¹ vertices:

Footprint	Latitude	Longitude
1	34°22'36.65S	20°42'53.73E
1	34°22'37.25S	20°42'54.1E
1	34°22'39.54S	20°42'56.29E
1	34°22'41.84S	20°42'59.64E
1	34°22'41.65S	20°43'1.46E
1	34°22'41.26S	20°43'2.43E
1	34°22'42.57S	20°43'5.28E
1	34°22'43.02S	20°43'5.86E
1	34°22'44.09S	20°43'5.2E
1	34°23'7.04S	20°42'53.22E
1	34°22'56.44S	20°42'44.9E

¹ “development footprint”, means the area within the site on which the development will take place and includes all ancillary developments for example roads, power lines, boundary walls, paving etc. which require vegetation clearance or which will be disturbed and for which the application has been submitted.

1	34°22'39.61S	20°42'52.41E
1	34°22'36.65S	20°42'53.73E
2	34°22'44.35S	20°43'1.18E
2	34°22'44.38S	20°43'1.35E
2	34°22'44.47S	20°43'1.46E
2	34°22'44.57S	20°43'1.53E
2	34°22'44.68S	20°43'1.44E
2	34°22'44.69S	20°43'1.33E
2	34°22'44.75S	20°43'1.27E
2	34°22'44.85S	20°43'1.26E
2	34°22'44.97S	20°43'1.18E
2	34°22'45.07S	20°43'1.1E
2	34°22'45.19S	20°43'1.03E
2	34°22'45.33S	20°43'1.04E
2	34°22'45.44S	20°43'1.07E
2	34°22'45.56S	20°43'0.92E
2	34°22'45.61S	20°43'0.93E
2	34°22'45.68S	20°43'0.9E
2	34°22'45.71S	20°43'0.81E
2	34°22'45.7S	20°43'0.74E
2	34°22'45.64S	20°43'0.7E
2	34°22'45.56S	20°43'0.67E
2	34°22'45.48S	20°43'0.64E
2	34°22'45.41S	20°43'0.58E
2	34°22'45.28S	20°43'0.53E
2	34°22'45.08S	20°43'0.41E
2	34°22'44.83S	20°43'0.29E
2	34°22'44.87S	20°43'0.06E
2	34°22'44.9S	20°42'59.94E
2	34°22'44.85S	20°42'59.8E
2	34°22'44.65S	20°42'59.61E
2	34°22'44.5S	20°42'59.45E
2	34°22'44.32S	20°42'59.25E
2	34°22'44.2S	20°42'59.11E
2	34°22'44.19S	20°42'59.01E
2	34°22'44.3S	20°42'58.89E
2	34°22'44.35S	20°42'58.86E
2	34°22'44.12S	20°42'58.28E
2	34°22'43.82S	20°42'58.33E
2	34°22'43.77S	20°42'58.32E
2	34°22'43.72S	20°42'58.18E
2	34°22'43.69S	20°42'57.95E
2	34°22'43.68S	20°42'57.61E
2	34°22'43.65S	20°42'57.43E
2	34°22'43.6S	20°42'57.27E
2	34°22'43.42S	20°42'57.14E
2	34°22'43.32S	20°42'57.11E
2	34°22'43.13S	20°42'57.22E
2	34°22'43.02S	20°42'57.34E
2	34°22'42.9S	20°42'57.47E
2	34°22'42.76S	20°42'57.64E
2	34°22'42.68S	20°42'57.83E
2	34°22'42.65S	20°42'57.94E
2	34°22'42.61S	20°42'58.17E
2	34°22'42.59S	20°42'58.34E
2	34°22'42.65S	20°42'58.47E
2	34°22'42.79S	20°42'58.65E
2	34°22'42.9S	20°42'58.86E
2	34°22'42.96S	20°42'58.96E
2	34°22'43.09S	20°42'59.19E

2	34°22'43.14S	20°42'59.38E
2	34°22'43.22S	20°42'59.48E
2	34°22'43.32S	20°42'59.57E
2	34°22'43.38S	20°42'59.58E
2	34°22'43.46S	20°42'59.58E
2	34°22'43.54S	20°42'59.51E
2	34°22'43.62S	20°42'59.52E
2	34°22'43.61S	20°42'59.48E
2	34°22'43.46S	20°42'59.1E
2	34°22'43.39S	20°42'58.64E
2	34°22'43.32S	20°42'58.18E
2	34°22'43.16S	20°42'57.21E
2	34°22'43.32S	20°42'57.12E
2	34°22'43.4S	20°42'57.58E
2	34°22'43.61S	20°42'57.34E
2	34°22'43.65S	20°42'57.52E
2	34°22'43.43S	20°42'57.82E
2	34°22'43.42S	20°42'57.94E
2	34°22'43.54S	20°42'58.48E
2	34°22'43.75S	20°42'58.81E
2	34°22'43.9S	20°42'58.76E
2	34°22'44.3S	20°42'59.32E
2	34°22'44.16S	20°42'59.45E
2	34°22'44.71S	20°43'0.21E
2	34°22'44.8S	20°43'0.29E
2	34°22'45.08S	20°43'0.42E
2	34°22'45.08S	20°43'0.5E
2	34°22'44.76S	20°43'0.4E
2	34°22'44.57S	20°43'0.29E
2	34°22'44.5S	20°43'0.34E
2	34°22'44.52S	20°43'0.41E
2	34°22'44.49S	20°43'0.48E
2	34°22'44.38S	20°43'0.52E
2	34°22'44.32S	20°43'0.52E
2	34°22'44.31S	20°43'0.43E
2	34°22'44.27S	20°43'0.41E
2	34°22'44.21S	20°43'0.44E
2	34°22'44.2S	20°43'0.46E
2	34°22'44.25S	20°43'0.48E
2	34°22'44.25S	20°43'0.58E
2	34°22'44.2S	20°43'0.64E
2	34°22'44.17S	20°43'0.7E
2	34°22'44.19S	20°43'0.75E
2	34°22'44.2S	20°43'0.81E
2	34°22'44.2S	20°43'0.89E
2	34°22'44.21S	20°43'0.93E
2	34°22'44.23S	20°43'0.96E
2	34°22'44.25S	20°43'1E
2	34°22'44.31S	20°43'1.1E
2	34°22'44.35S	20°43'1.18E
3	34°22'44.74S	20°42'53.24E
3	34°22'44.67S	20°42'53.54E
3	34°22'44.67S	20°42'53.74E
3	34°22'44.79S	20°42'54.06E
3	34°22'44.93S	20°42'54.15E
3	34°22'45.13S	20°42'54.12E
3	34°22'45.55S	20°42'54.08E
3	34°22'45.78S	20°42'53.95E
3	34°22'46.08S	20°42'53.83E
3	34°22'46.22S	20°42'53.31E

3	34°22'46.23S	20°42'53E
3	34°22'46.15S	20°42'52.72E
3	34°22'46.03S	20°42'52.56E
3	34°22'45.74S	20°42'52.62E
3	34°22'45.26S	20°42'52.91E
3	34°22'45.04S	20°42'53.12E
3	34°22'44.74S	20°42'53.24E
4	34°23'0.89S	20°42'55.61E
4	34°23'1.5S	20°42'55.27E
4	34°23'1.09S	20°42'54.95E
4	34°23'0.75S	20°42'55.05E
4	34°23'0.89S	20°42'55.61E

Wind and Solar developments with an approved Environmental Authorisation or applications under consideration within 30 km of the proposed area

No nearby wind or solar developments found.

Environmental Management Frameworks relevant to the application

No intersections with EMF areas found.

Environmental screening results and assessment outcomes

The following sections contain a summary of any development incentives, restrictions, exclusions or prohibitions that apply to the proposed development footprint as well as the most environmental sensitive features on the footprint based on the footprint sensitivity screening results for the application classification that was selected. The application classification selected for this report is:

Transformation of land | Indigenous vegetation.

Relevant development incentives, restrictions, exclusions or prohibitions

The following development incentives, restrictions, exclusions or prohibitions and their implications that apply to this footprint are indicated below.

No intersection with any development zones found.

Proposed Development Area Environmental Sensitivity

The following summary of the development footprint environmental sensitivities is identified. Only the highest environmental sensitivity is indicated. The footprint environmental sensitivities for the proposed development footprint as identified, are indicative only and must be verified on site by a suitably qualified person before the specialist assessments identified below can be confirmed.

Theme	Very High sensitivity	High sensitivity	Medium sensitivity	Low sensitivity
Agriculture Theme			X	

Animal Species Theme		X		
Aquatic Biodiversity Theme	X			
Archaeological and Cultural Heritage Theme				X
Civil Aviation Theme		X		
Defence Theme				X
Paleontology Theme	X			
Plant Species Theme			X	
Terrestrial Biodiversity Theme	X			

Specialist assessments identified

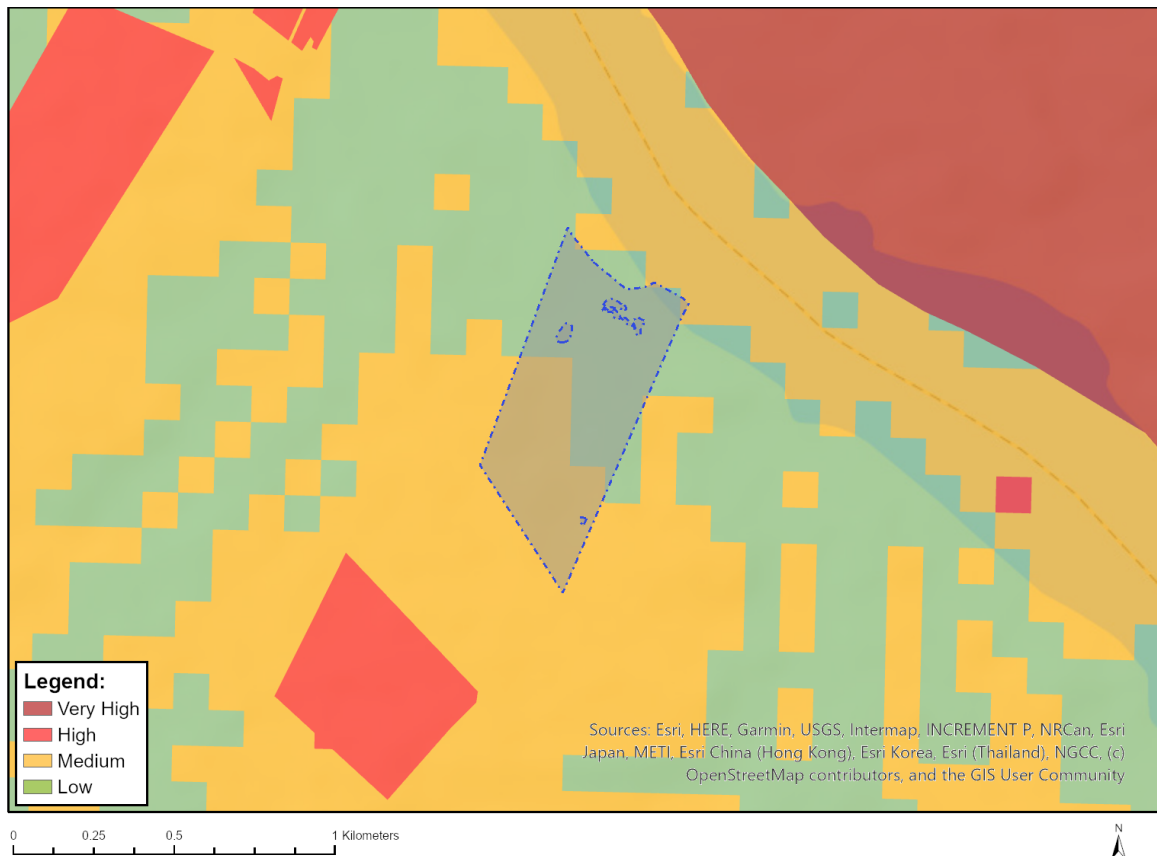
Based on the selected classification, and the known impacts associated with the proposed development, the following list of specialist assessments have been identified for inclusion in the assessment report. It is the responsibility of the EAP to confirm this list and to motivate in the assessment report, the reason for not including any of the identified specialist study including the provision of photographic evidence of the footprint situation.

No	Specialist assessment	Assessment Protocol
1	Landscape/Visual Impact Assessment	https://screening.environment.gov.za/ScreeningDownloads/AssessmentProtocols/Gazetted_General_Requirement_Assessment_Protocols.pdf
2	Archaeological and Cultural Heritage Impact Assessment	https://screening.environment.gov.za/ScreeningDownloads/AssessmentProtocols/GuidanceforHIA.pdf
3	Palaeontology Impact Assessment	https://screening.environment.gov.za/ScreeningDownloads/AssessmentProtocols/GuidanceforPIA.pdf
4	Terrestrial Biodiversity Impact Assessment	https://screening.environment.gov.za/ScreeningDownloads/AssessmentProtocols/Gazetted_Terrestrial_Biodiversity_Assessment_Protocols.pdf
5	Aquatic Biodiversity Impact Assessment	https://screening.environment.gov.za/ScreeningDownloads/AssessmentProtocols/Gazetted_Aquatic_Biodiversity_Assessment_Protocols.pdf
6	Socio-Economic Assessment	https://screening.environment.gov.za/ScreeningDownloads/AssessmentProtocols/Gazetted_General_Requirement_Assessment_Protocols.pdf
7	Plant Species Assessment	https://screening.environment.gov.za/ScreeningDownloads/AssessmentProtocols/Gazetted_Plant_Species_Assessment_Protocols.pdf
8	Animal Species Assessment	https://screening.environment.gov.za/ScreeningDownloads/AssessmentProtocols/Gazetted_Animal_Species_Assessment_Protocols.pdf

Results of the environmental sensitivity of the proposed area.

The following section represents the results of the screening for environmental sensitivity of the proposed footprint for relevant environmental themes associated with the project classification. It is the duty of the EAP to ensure that the environmental themes provided by the screening tool are comprehensive and complete for the project. Refer to the disclaimer.

MAP OF RELATIVE AGRICULTURE THEME SENSITIVITY

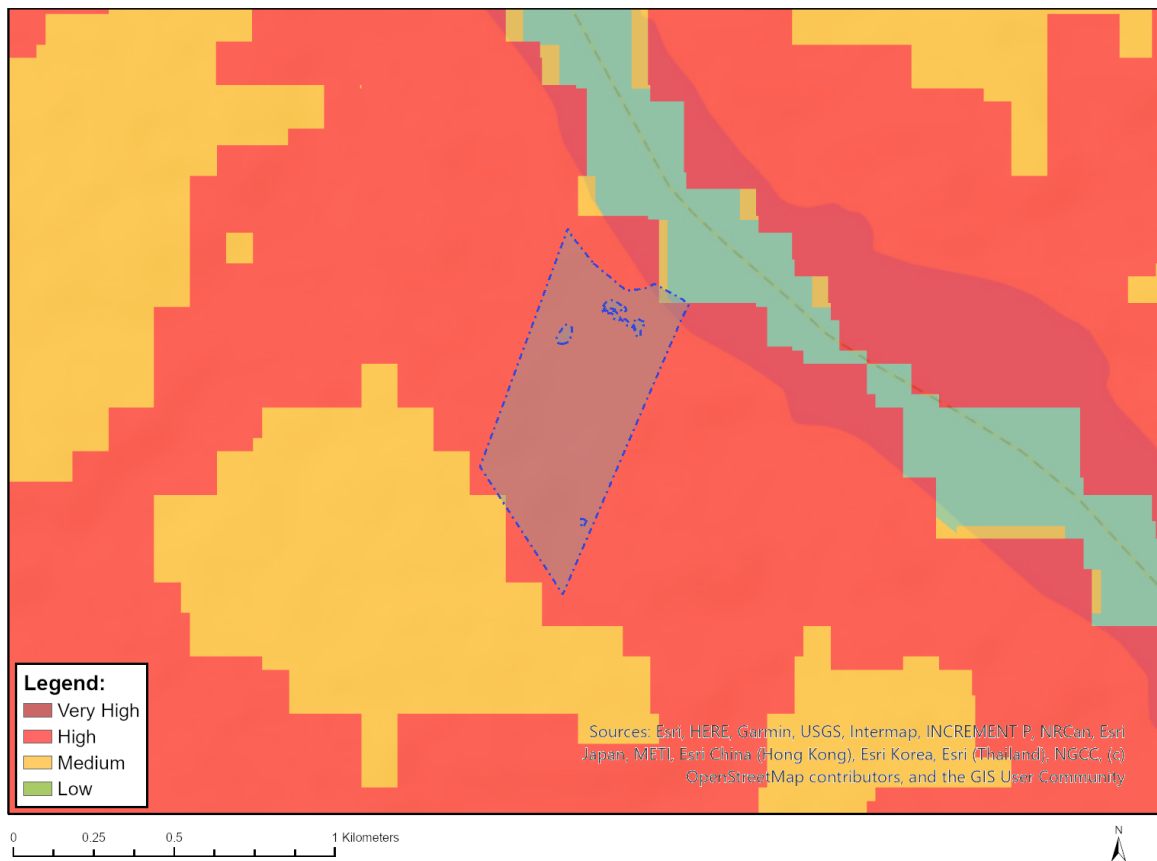


Very High sensitivity	High sensitivity	Medium sensitivity	Low sensitivity
		X	

Sensitivity Features:

Sensitivity	Feature(s)
Low	04. Low-Very low
Low	03. Low-Very low
Low	05. Low
Medium	07. Low-Moderate
Medium	06. Low-Moderate

MAP OF RELATIVE ANIMAL SPECIES THEME SENSITIVITY



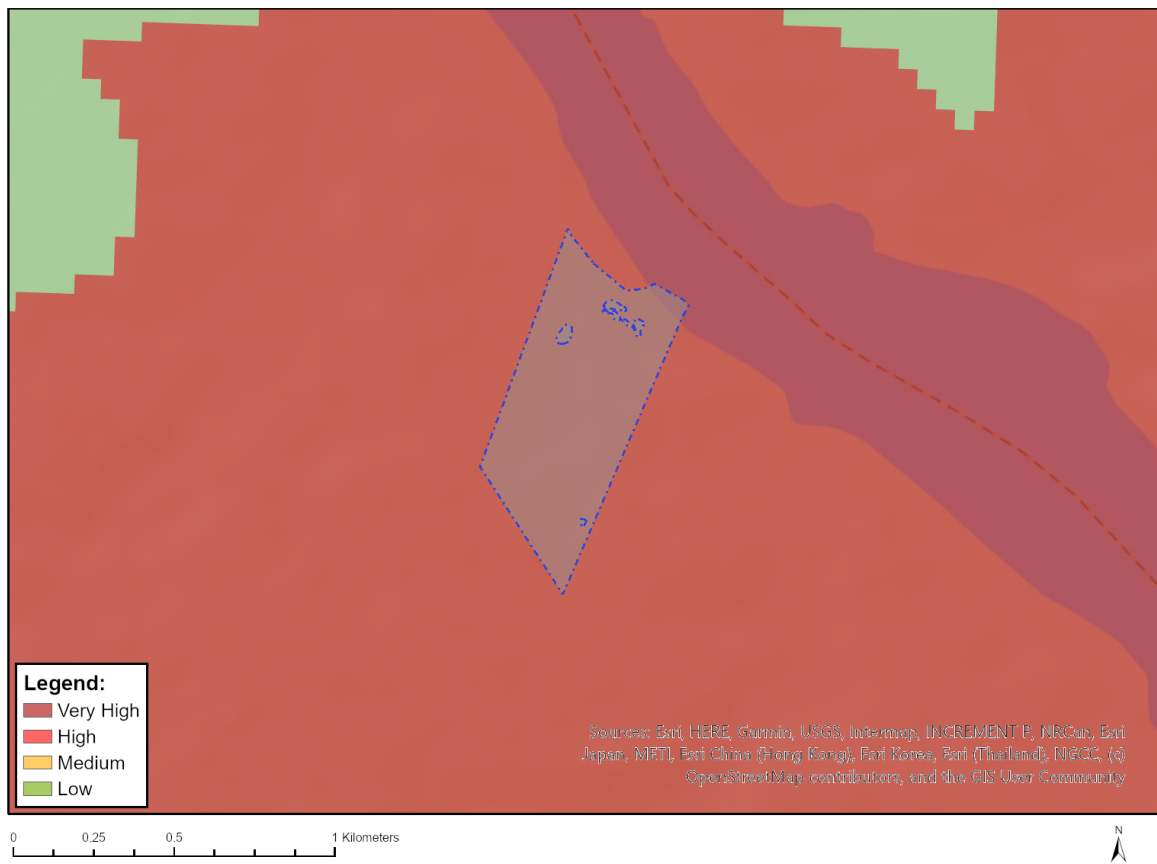
Where only a sensitive plant unique number or sensitive animal unique number is provided in the screening report and an assessment is required, the environmental assessment practitioner (EAP) or specialist is required to email SANBI at eiadatarequests@sanbi.org.za listing all sensitive species with their unique identifiers for which information is required. The name has been withheld as the species may be prone to illegal harvesting and must be protected. SANBI will release the actual species name after the details of the EAP or specialist have been documented.

Very High sensitivity	High sensitivity	Medium sensitivity	Low sensitivity
	X		

Sensitivity Features:

Sensitivity	Feature(s)
High	Aves-Hydroprogne caspia
High	Aves-Neotis denhami
High	Aves-Polemaetus bellicosus
High	Aves-Circus maurus
Low	Subject to confirmation
Medium	Aves-Podica senegalensis
Medium	Aves-Circus ranivorus
Medium	Aves-Afrotis afra
Medium	Invertebrate-Aneuryphymus montanus

MAP OF RELATIVE AQUATIC BIODIVERSITY THEME SENSITIVITY

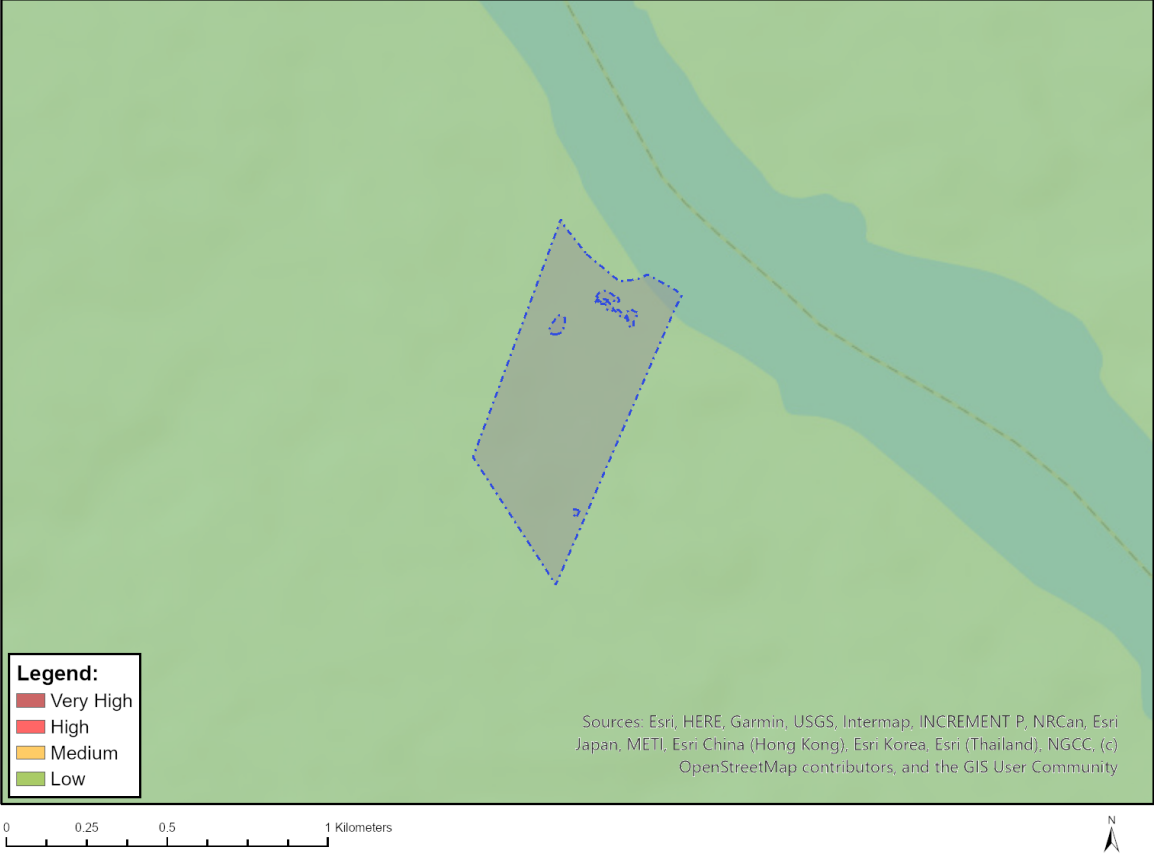


Very High sensitivity	High sensitivity	Medium sensitivity	Low sensitivity
X			

Sensitivity Features:

Sensitivity	Feature(s)
Very High	CBA: Estuary
Very High	CBA: Wetland
Very High	Estuary
Very High	FEPA Subcatchment
Very High	Estuary_Breede
Very High	Rivers

MAP OF RELATIVE ARCHAEOLOGICAL AND CULTURAL HERITAGE THEME SENSITIVITY

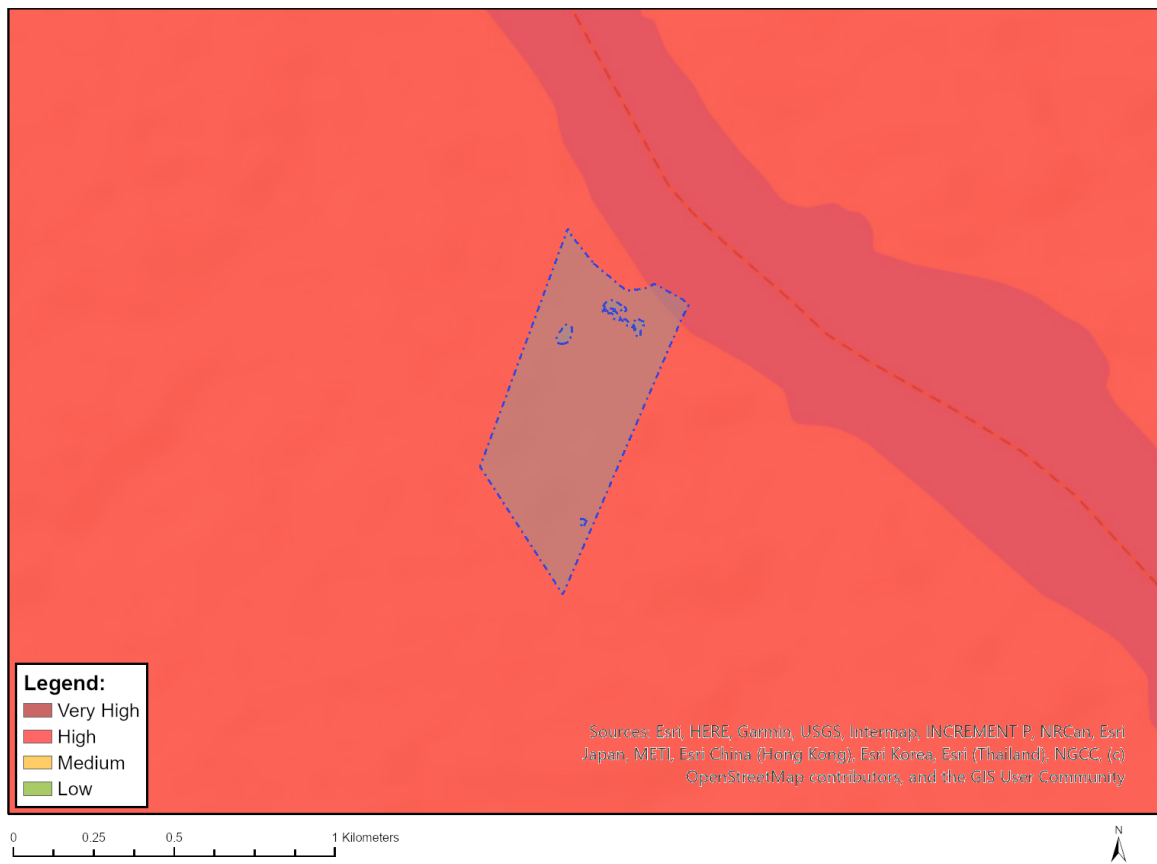


Very High sensitivity	High sensitivity	Medium sensitivity	Low sensitivity
			X

Sensitivity Features:

Sensitivity	Feature(s)
Low	Low Sensitivity

MAP OF RELATIVE CIVIL AVIATION THEME SENSITIVITY

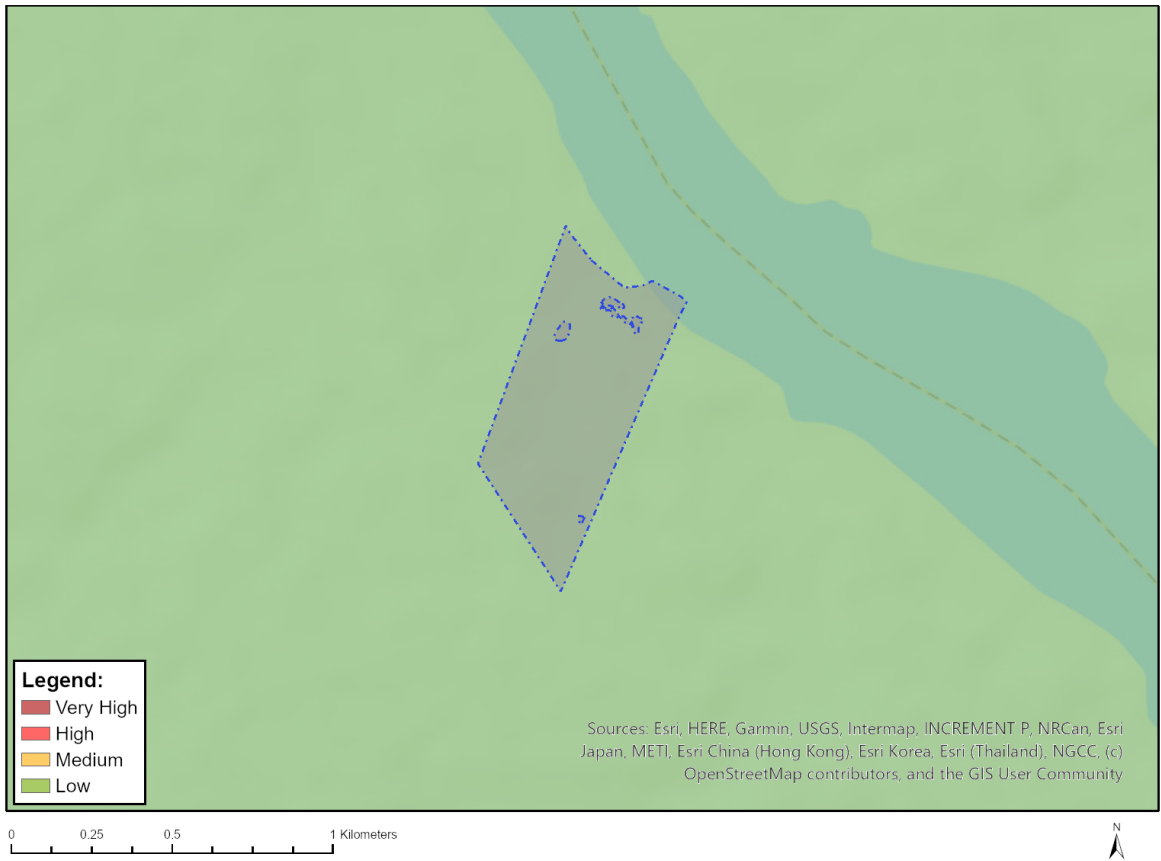


Very High sensitivity	High sensitivity	Medium sensitivity	Low sensitivity
	X		

Sensitivity Features:

Sensitivity	Feature(s)
High	Dangerous and restricted airspace as demarcated

MAP OF RELATIVE DEFENCE THEME SENSITIVITY

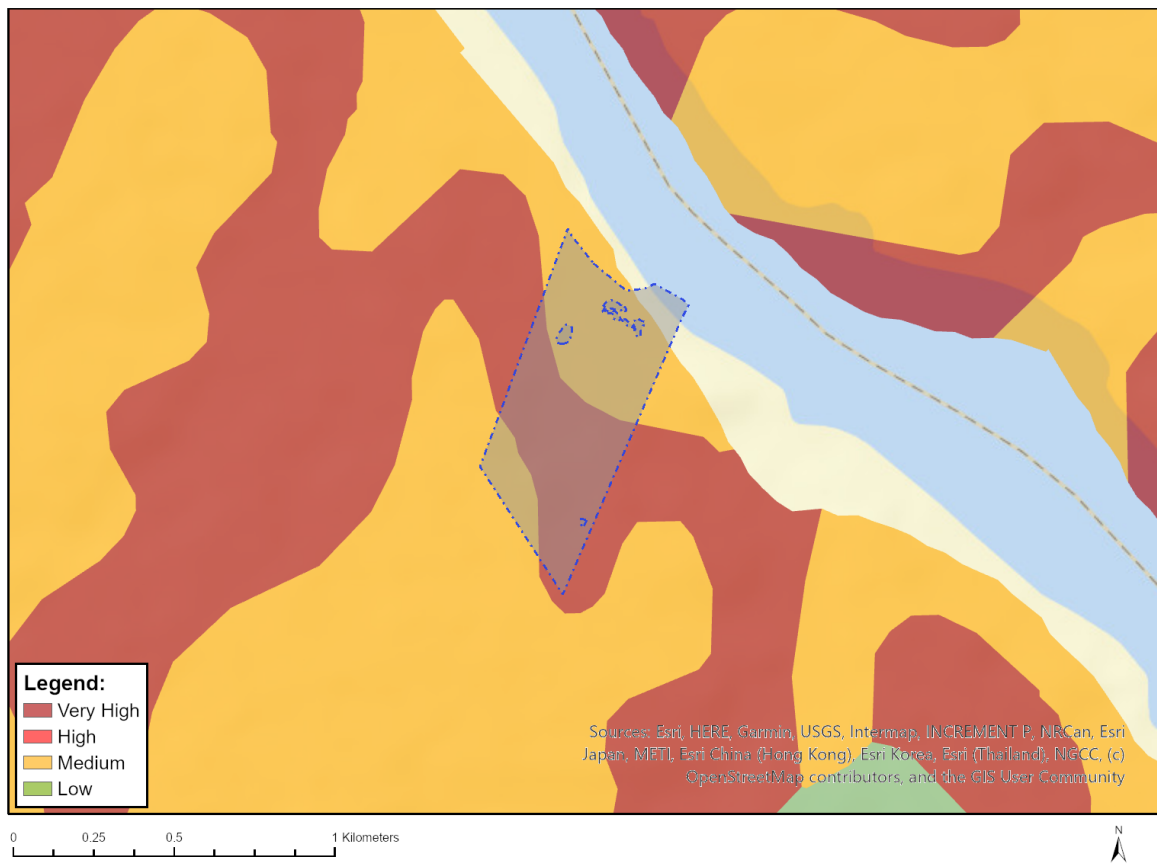


Very High sensitivity	High sensitivity	Medium sensitivity	Low sensitivity
			X

Sensitivity Features:

Sensitivity	Feature(s)
Low	Low Sensitivity

MAP OF RELATIVE PALEONTOLOGY THEME SENSITIVITY

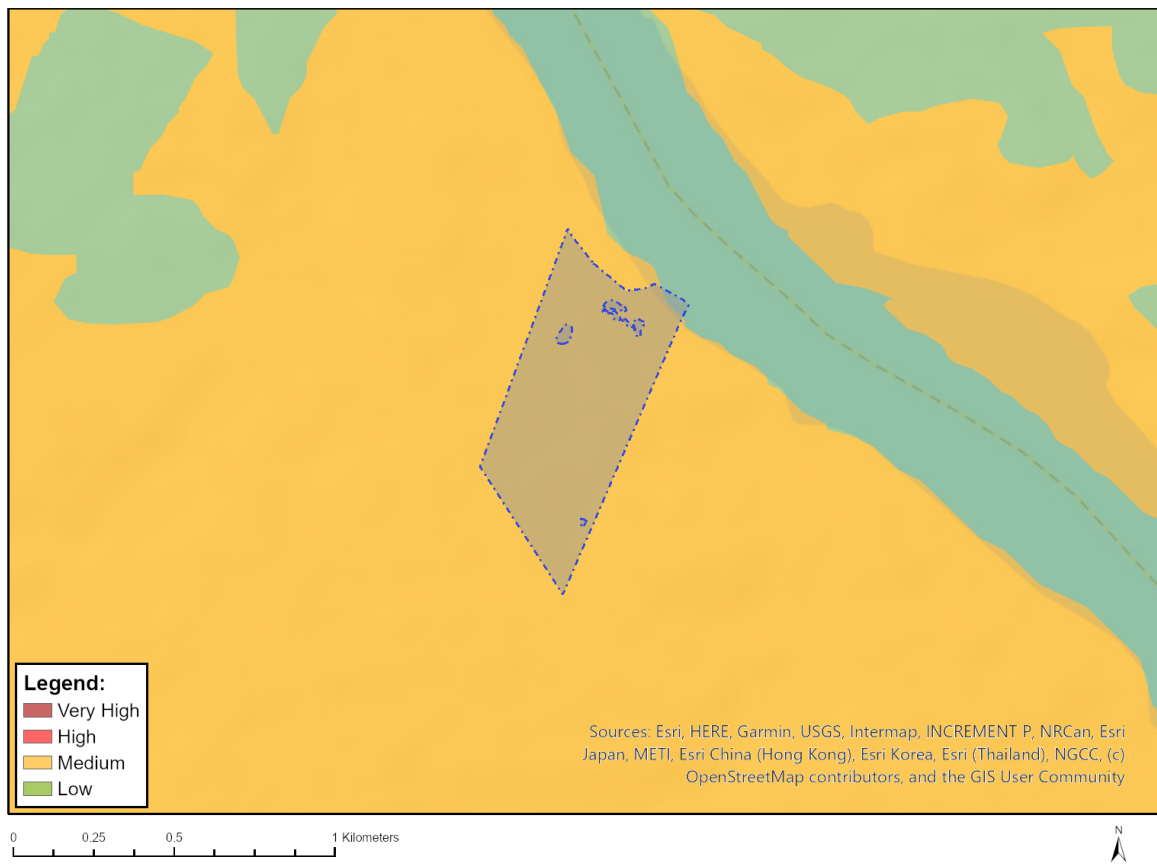


Very High sensitivity	High sensitivity	Medium sensitivity	Low sensitivity
X			

Sensitivity Features:

Sensitivity	Feature(s)
Medium	Features with a Medium paleontological sensitivity
Very High	Features with a Very High paleontological sensitivity

MAP OF RELATIVE PLANT SPECIES THEME SENSITIVITY



Where only a sensitive plant unique number or sensitive animal unique number is provided in the screening report and an assessment is required, the environmental assessment practitioner (EAP) or specialist is required to email SANBI at eiadatarequests@sanbi.org.za listing all sensitive species with their unique identifiers for which information is required. The name has been withheld as the species may be prone to illegal harvesting and must be protected. SANBI will release the actual species name after the details of the EAP or specialist have been documented.

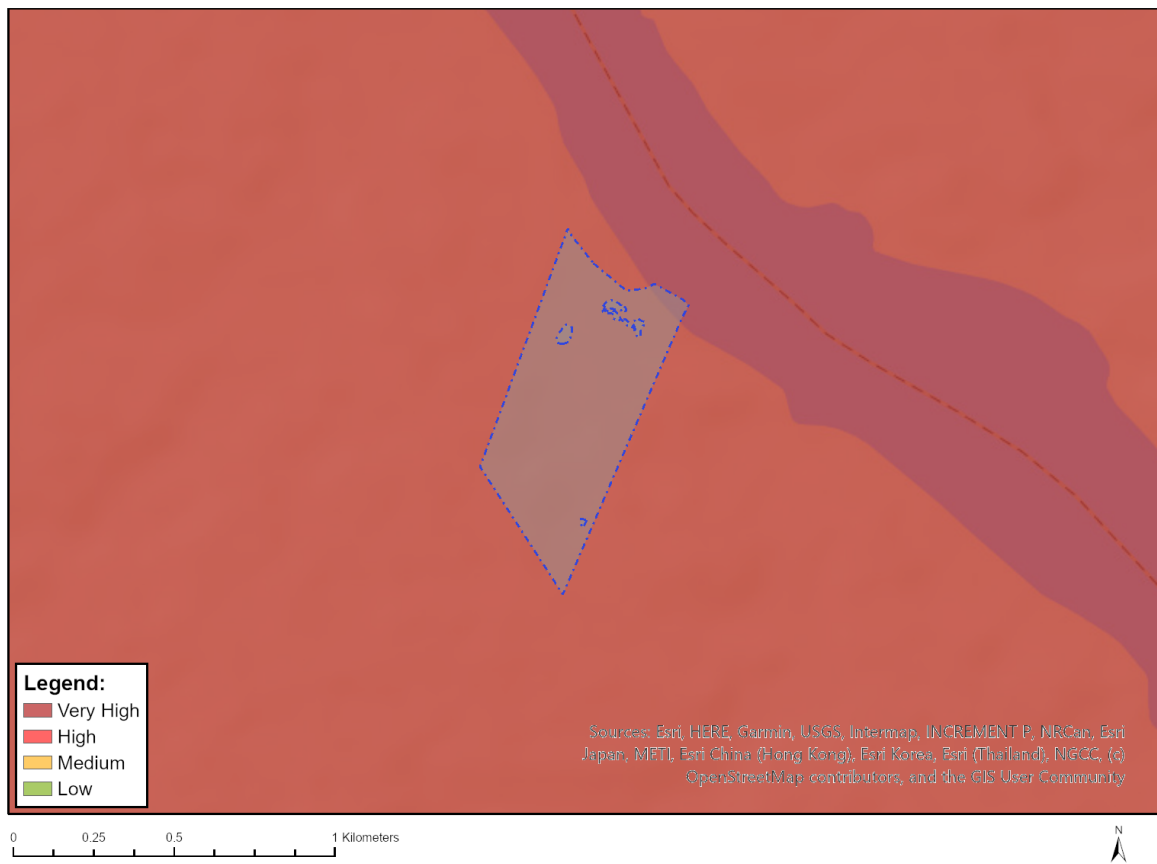
Very High sensitivity	High sensitivity	Medium sensitivity	Low sensitivity
		X	

Sensitivity Features:

Sensitivity	Feature(s)
Low	Low Sensitivity
Medium	Lampranthus amabilis
Medium	Lampranthus ceriseus
Medium	Lampranthus fergusoniae
Medium	Lampranthus pauciflorus
Medium	Disphyma dunsdonii
Medium	Ruschia leptocalyx
Medium	Amphithalea sericea
Medium	Argyrolobium harmsianum
Medium	Xiphotheca guthriei
Medium	Aspalathus globulosa
Medium	Aspalathus joubertiana
Medium	Aspalathus zeyheri

Medium	<i>Otholobium pungens</i>
Medium	<i>Polhillia pallens</i>
Medium	<i>Lebeckia gracilis</i>
Medium	<i>Leucadendron coniferum</i>
Medium	<i>Leucadendron coriaceum</i>
Medium	<i>Leucadendron linifolium</i>
Medium	<i>Protea denticulata</i>
Medium	<i>Paranomus abrotanifolius</i>
Medium	<i>Wahlenbergia polyantha</i>
Medium	<i>Selago diffusa</i>
Medium	<i>Lobostemon lucidus</i>
Medium	<i>Lobostemon sanguineus</i>
Medium	<i>Lobostemon daltonii</i>
Medium	<i>Hesperantha muirii</i>
Medium	<i>Freesia fergusoniae</i>
Medium	<i>Bobartia longicyma</i> subsp. <i>microflora</i>
Medium	<i>Lobelia barkerae</i>
Medium	<i>Lobelia valida</i>
Medium	<i>Erica oblongiflora</i>
Medium	<i>Erica albertyniae</i>
Medium	<i>Hermannia lavandulifolia</i>
Medium	<i>Bulbinella potbergensis</i>
Medium	Sensitive species 1142
Medium	<i>Cynanchum zeyheri</i>
Medium	Sensitive species 1192
Medium	<i>Heliophila linearis</i> var. <i>reticulata</i>
Medium	<i>Gnidia spicata</i>
Medium	<i>Felicia ebracteata</i>
Medium	<i>Dymondia margaretae</i>
Medium	<i>Cotula myriophylloides</i>
Medium	<i>Chrysocoma strigosa</i>
Medium	<i>Stoebe muirii</i>
Medium	<i>Stoebe schultzii</i>
Medium	<i>Relhania garnotii</i>
Medium	<i>Diosma parvula</i>
Medium	<i>Diosma tenella</i>
Medium	<i>Agathosma eriantha</i>
Medium	<i>Agathosma riversdalensis</i>
Medium	<i>Euchaetis schlechteri</i>
Medium	<i>Cliffortia longifolia</i>
Medium	Sensitive species 5
Medium	Sensitive species 913
Medium	<i>Phylica elimensis</i>
Medium	<i>Phylica incurvata</i>
Medium	<i>Orthochilus litoralis</i>
Medium	Sensitive species 1098
Medium	<i>Drosanthemum lavisii</i>
Medium	<i>Aspalathus tylodes</i>
Medium	Sensitive species 599
Medium	<i>Elegia squamosa</i>
Medium	<i>Elegia verreauxii</i>
Medium	Sensitive species 500
Medium	Sensitive species 53
Medium	<i>Diosma passerinoides</i>
Medium	<i>Zostera capensis</i>

MAP OF RELATIVE TERRESTRIAL BIODIVERSITY THEME SENSITIVITY



Very High sensitivity	High sensitivity	Medium sensitivity	Low sensitivity
X			

Sensitivity Features:

Sensitivity	Feature(s)
Very High	CBA: Terrestrial
Very High	CBA2: Terrestrial
Very High	FEPA Subcatchment
Very High	CR_Potberg Ferricrete Fynbos